

High Level Programme

## High Level Logistics





		Site Set up and Roads							
Key	Activity	April - June 2024							
		1-2	3-4	5-6	7-8	9-10	11-12	13-14	
1	Temp Site Set Up	■							
2	Tree Crown Lift	■							
3	Storm Sewer Connection		■						
4	Boundary Fencing		■						
5	Site Access Roads & Parking Bays		■						
6	Muga Stage 1 (for Storage and Turning)			■					
7	Full Set Up				■	■			

### Notes

- Demo Completes in week -1
- Temp Oasis Unit in Place for Week 1 – 8 whilst parking Bays Construction
- Pollarding to trees under approval from LBH
- Hoarding to front in place Week 1
- Replacement of boundary fencing from Week 2 onwards to remainder of site
- MUGA completes in two stages to enable on-site logistics and turning circle

**Enabling works and Access Roads Stage 1 Sequence:  
Week 01 – Week 10**



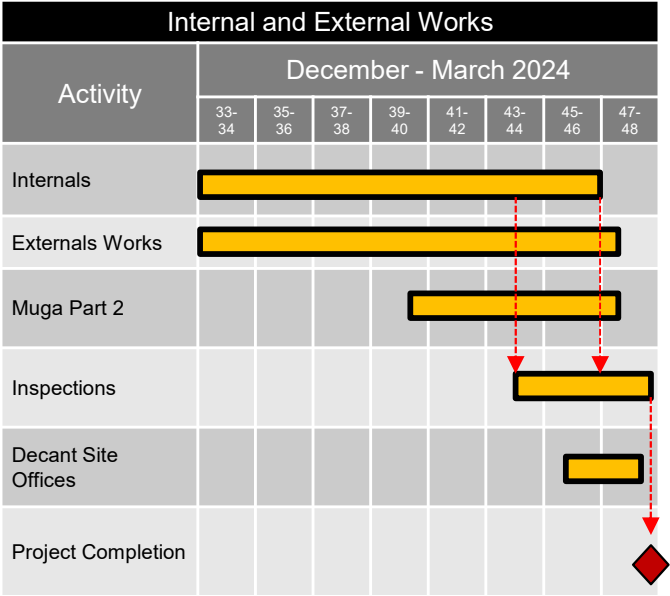
Substructures and Superstructures								
Key	Activity	July – November 2024						
		11-13	14-16	17-20	21-23	24-26	27-29	30-32
A	Substructures	■						Top Out Wk 26
B	Brickwork & Scaffold		■					◆
C	Roof construction and Covering					■		
D	Scaffold Strike and Windows						■	
E	Internals Commence					◆		

- Notes**
- Blocks Numbered 1,2 and 3 as shown – This is also the general sequence of Build
  - Blocks are served by 1 no loading bay per block which rises with Scaffold
  - No Access Required around the back of Blocks 1 and 2
  - Blocks 1 and 2 have a linked scaffold from 1<sup>st</sup> Lift
  - MUGA used as part of logistics route

—●— Forklift Routes

**Substructures and Superstructures Sequence:  
Week 11 - Week 32**

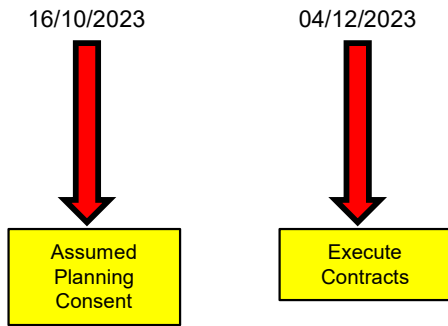




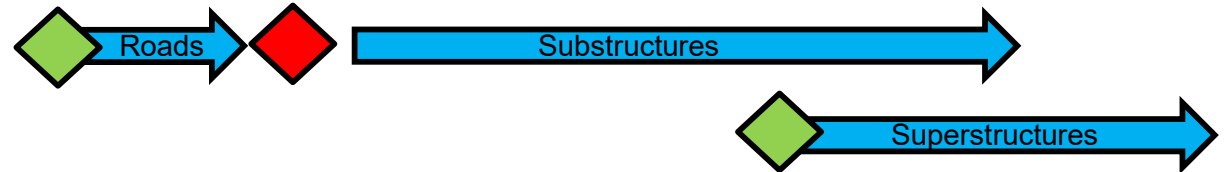
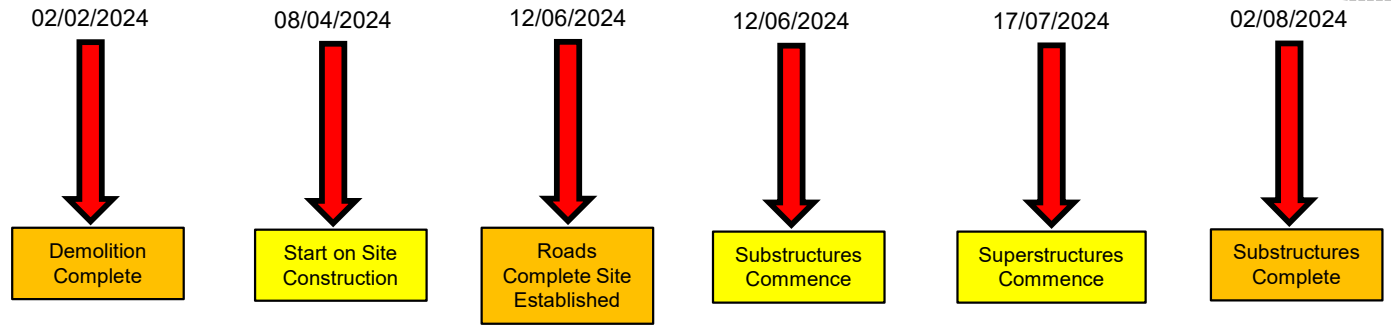
- Notes**
- Blocks Numbered 1,2 and 3 as shown – This is also the general sequence of Internals
  - Externals Works released by Scaffold down dates
  - MUGA Part 2 generated from Block Specific External Works
  - Inspections on a block by block basis

**Internals and External Works Sequence:  
Week 33 – Week 48**

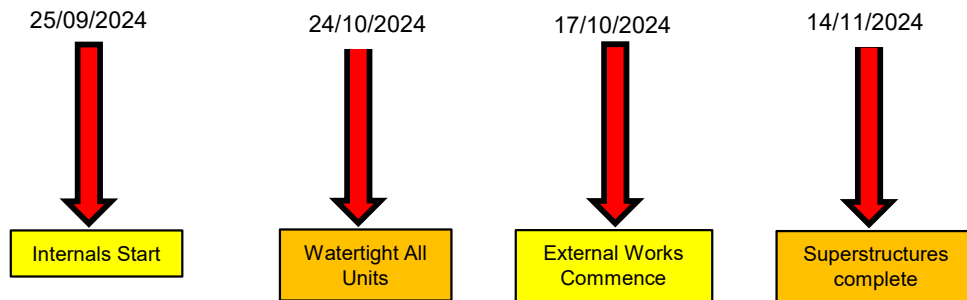
2023



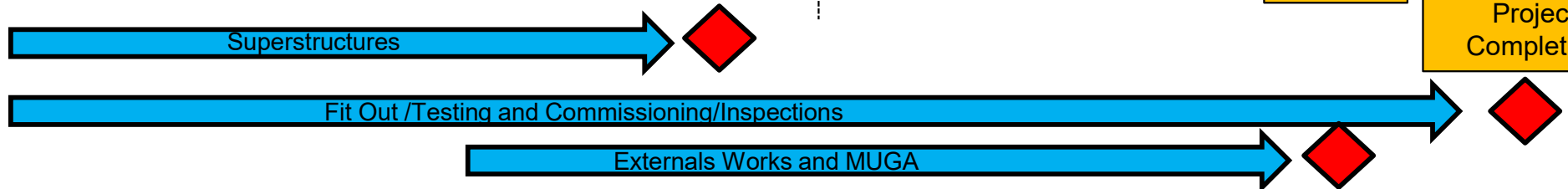
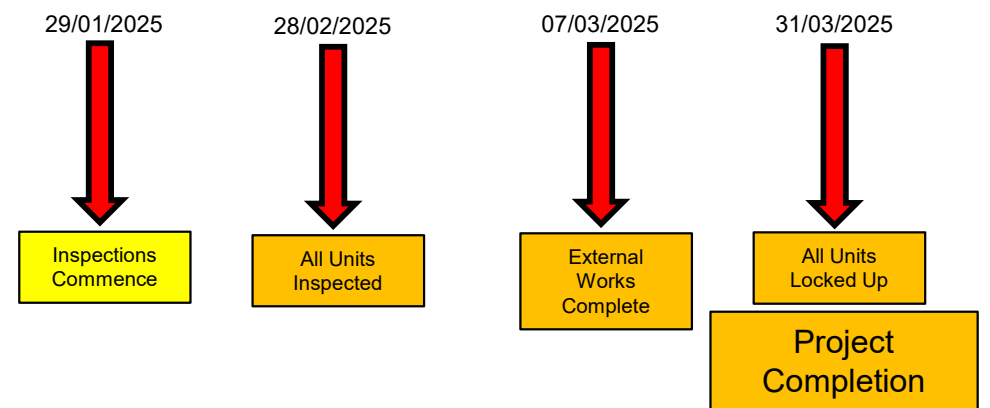
2024



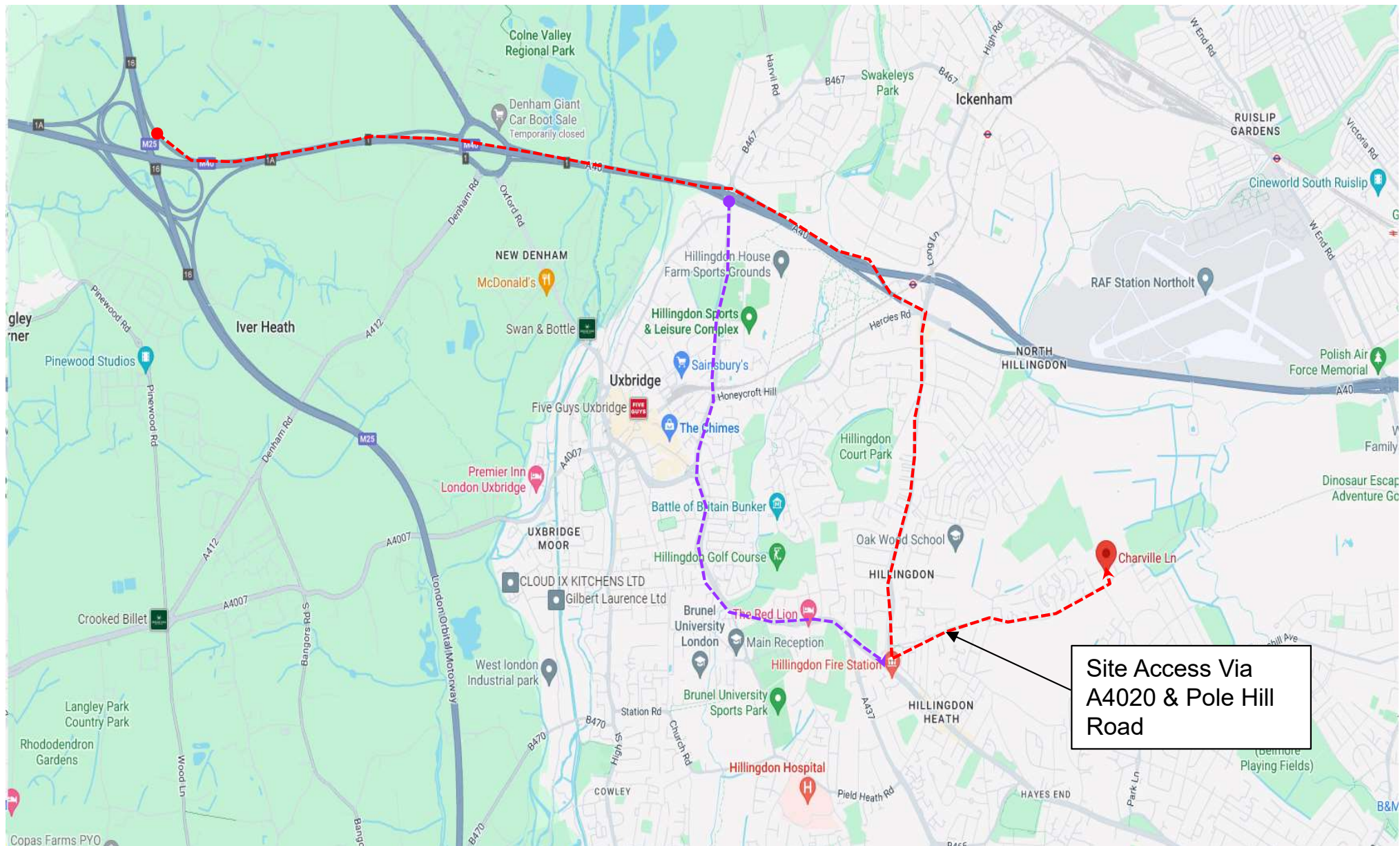
2024



2025



## Appendix A – HGV Construction Vehicle Routing



Primary Route to Site Via M25 and A40



Secondary Route to Site Via M25 and A40