



System information

PV Array

Nb. of modules 358 units  
Pnom total 147 kWp

Inverters

Nb. of units 2 units  
Pnom total 120 kWac  
Pnom ratio 1.223

PV module

Manufacturer Hanwha Q Cells  
Model Q.Peak-Duo-ML-G10-410

(Custom parameters definition)

Unit Nom. Power 410 Wp  
Number of PV modules 233 units  
Nominal (STC) 95.5 kWp

Results summary

Produced Energy	122178 kWh/year	Specific production	832 kWh/kWp/year	Perf. Ratio PR	82.37 %
-----------------	-----------------	---------------------	------------------	----------------	---------

Invertor

Manufacturer	Ginlong Technologies
Model	Solis-80K-5G
(Custom parameters definition)	
Unit Nom. Power	80.0 kWac
Number of inverters	1 unit
Total power	80.0 kWac

Number of inverters	5 * MPPT 11% 0.6 unit
Total power	44.4 kWac

Operating voltage	180-800 V
Pnom ratio (DC:AC)	1.49
No power sharing between MPPTs	

Number of inverters	1 * MPPT 11% 0.1 unit
Total power	8.9 kWac

Operating voltage	180-800 V
Pnom ratio (DC:AC)	0.78

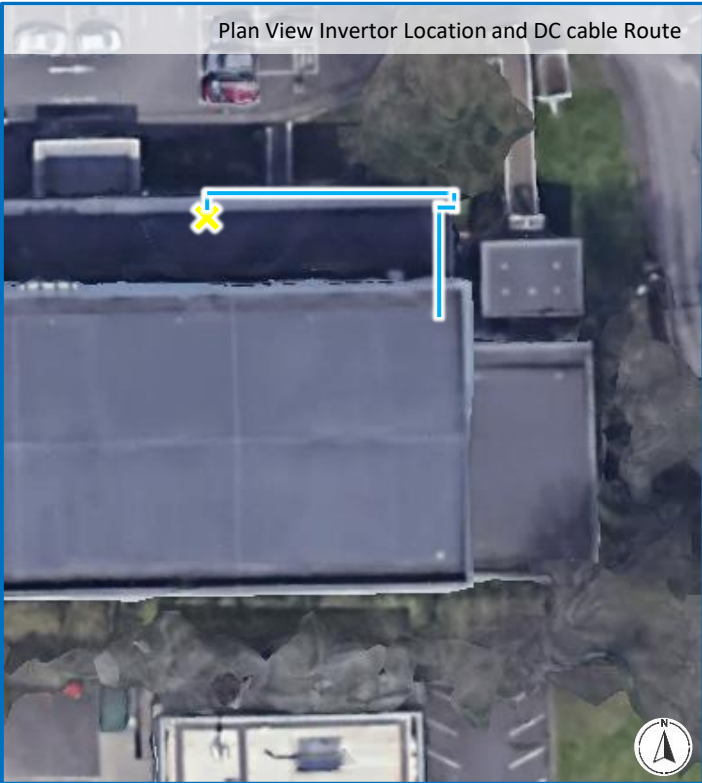
Number of inverters	3 * MPPT 11% 0.3 unit
Total power	26.7 kWac

Operating voltage	180-800 V
Pnom ratio (DC:AC)	0.83

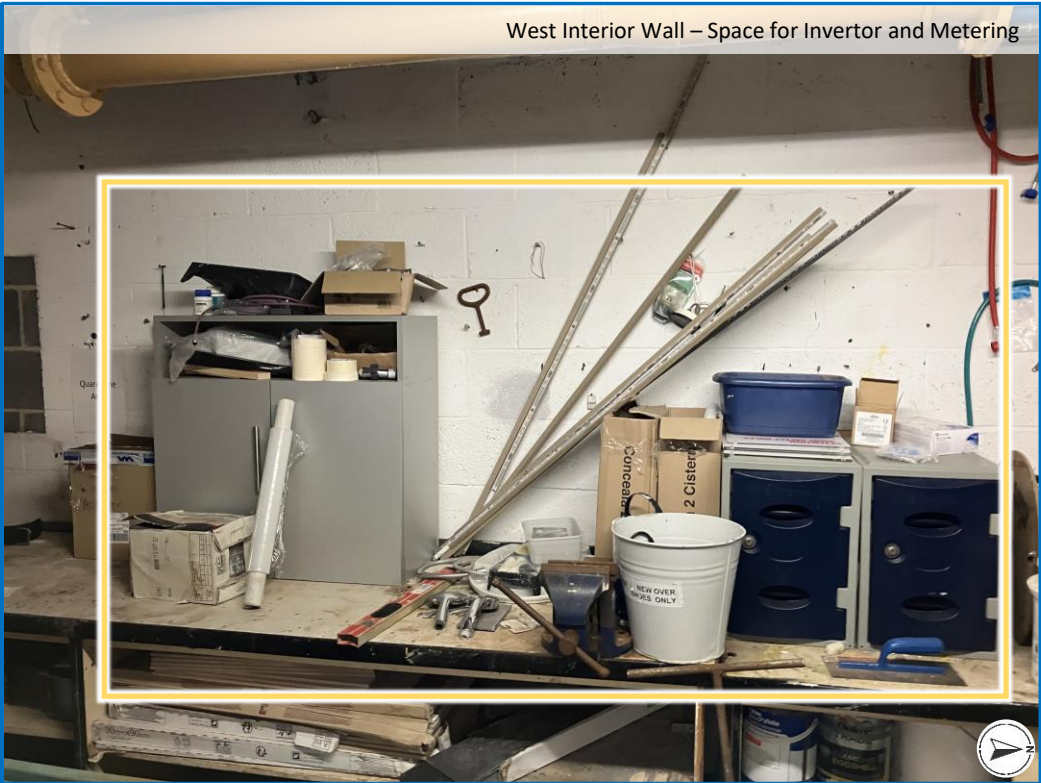


West Interior Wall

— DC Cable  
X Invertor



Plan View Invertor Location and DC cable Route

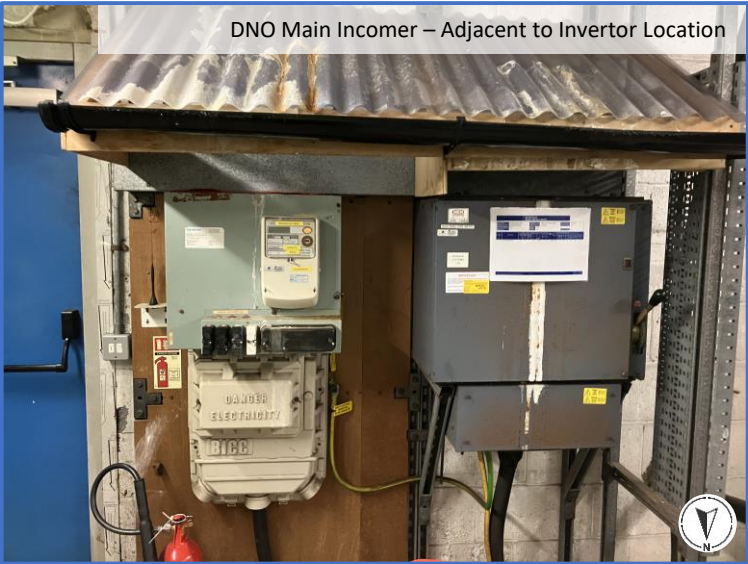
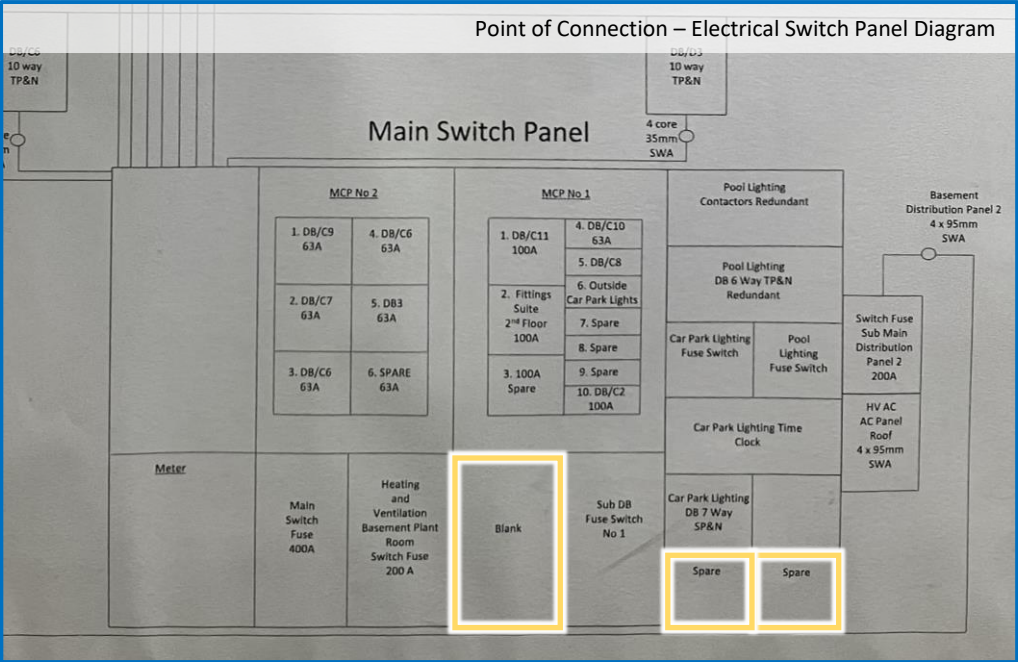


West Interior Wall – Space for Invertor and Metering



Point of Connection

Three spare ways available for use.



AC Cable  
POC  
Invertor



Cable Route, Design and Materials

DC cable to be installed in ducting and secured with cable ties to light, galvanised hot dip tray

New tray to be installed where possible to meet BS7671

