

This drawing is only to the stated scale if it is printed correctly.
MPLLP cannot accept responsibility for the incorrect scaling
of drawings printed by third parties.

All dimensions are in mm unless otherwise stated.

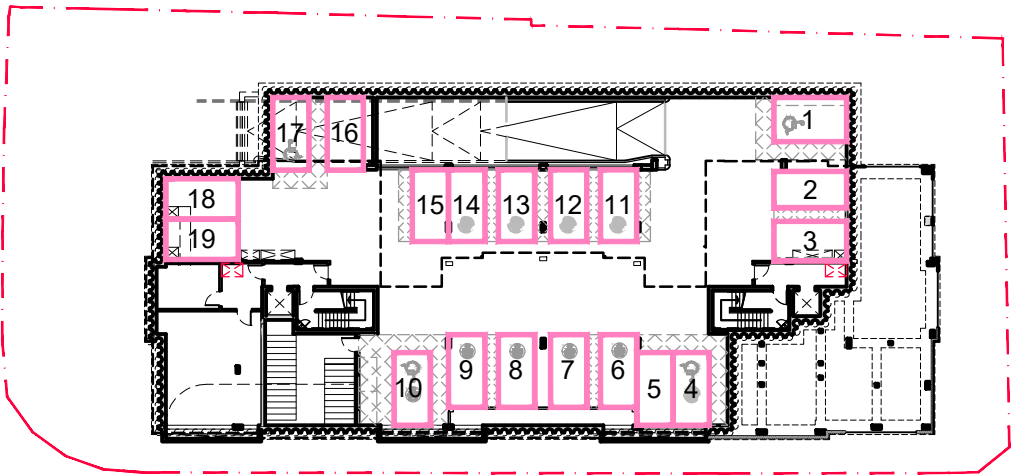
If this drawing forms part of an application for planning
permission on behalf of the applicant named below, it shall not
be used for any other purpose without the express permission
of Mountford Pigott LLP.

This drawing may incorporate information from other
professionals. Mountford Pigott LLP cannot accept
responsibility for the integrity and accuracy of such information.
Any clarification and/or additions that are required appertaining
to such information should be sought from the relevant
profession or their appointment representative as listed below.

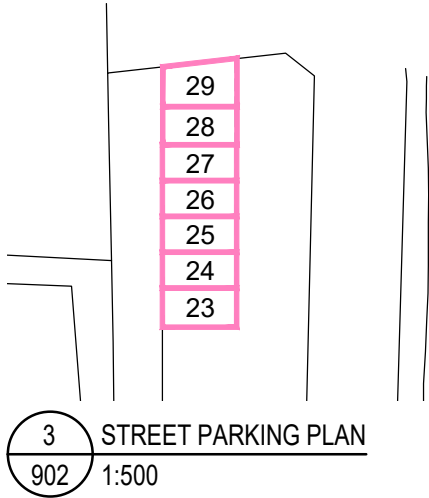
LIST OF INFORMANTS :

-
-
-
-

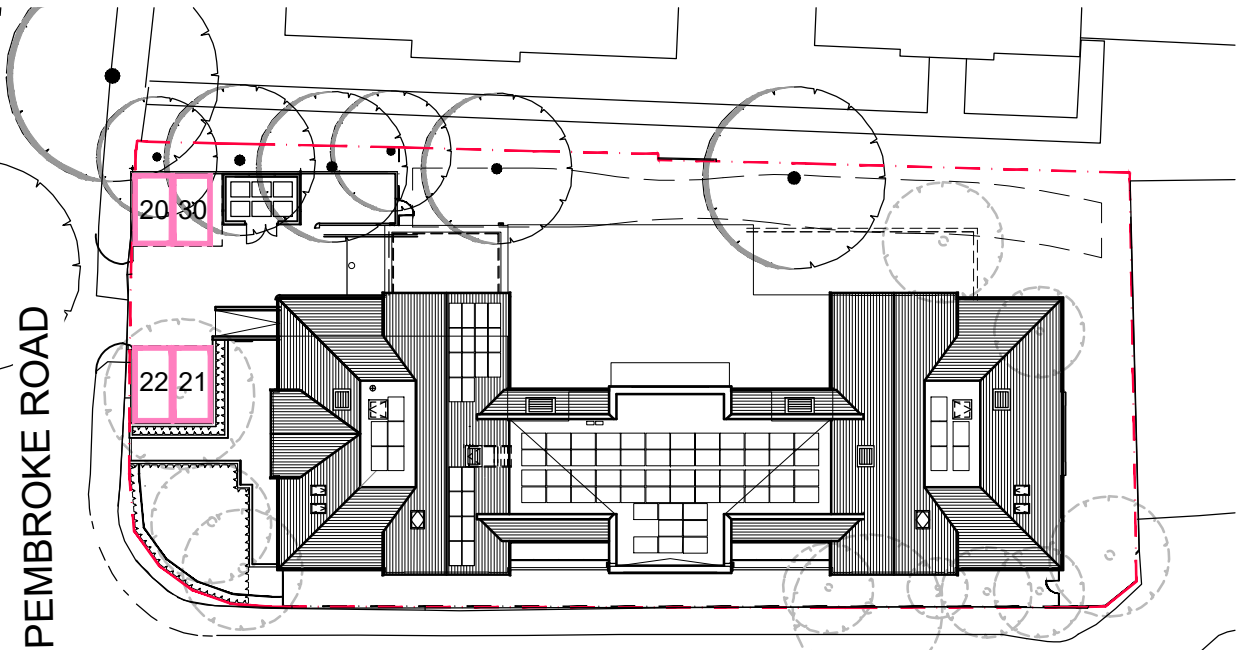
REVISIONS	DATE	DRN	REV
REFUSE HOLDING AREA RELOCATED	28/08/20	JM	A
PARKING SPACE 30 ADDED			



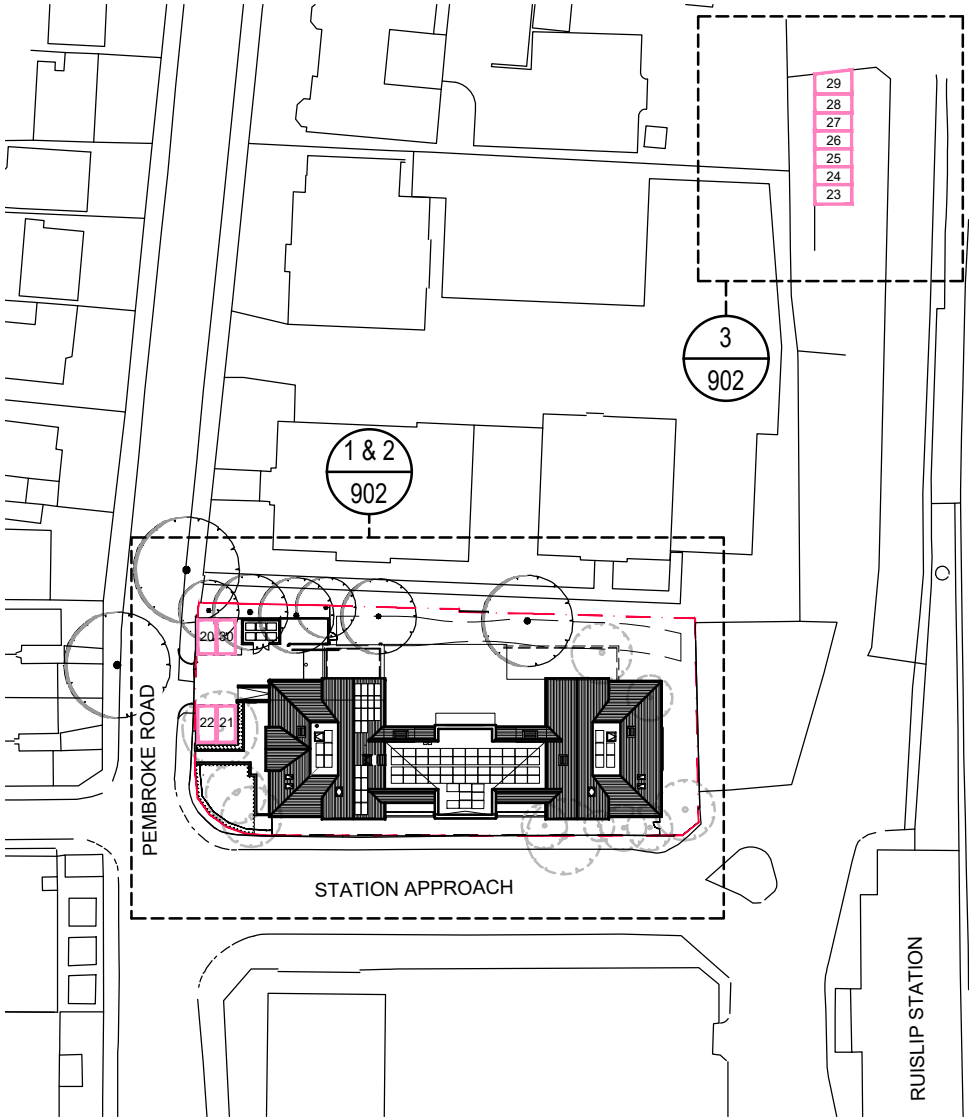
1 BASEMENT PARKING PLAN
902 1:500



3 STREET PARKING PLAN
902 1:500

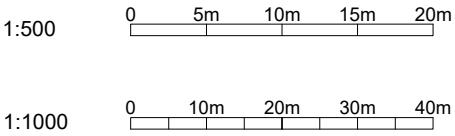
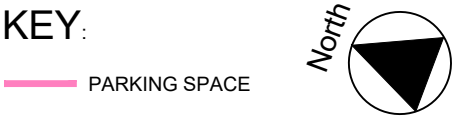


2 GROUND FLOOR PARKING PLAN
902 1:500



2 KEY PLAN
902 1:1000

This drawing contains critical information in
colour. To ensure this information is legible,
only print or copy this drawing in full colour.



MountfordPigott
Architecture Masterplanning Design

FANUC HOUSE
1 STATION APPROACH
PARKING ALLOCATION
BASEMENT & GF PLANS