

© Mountford Pigott LLP 2016
Reproduction in whole or in part by any means is prohibited without the prior permission of Mountford Pigott LLP.

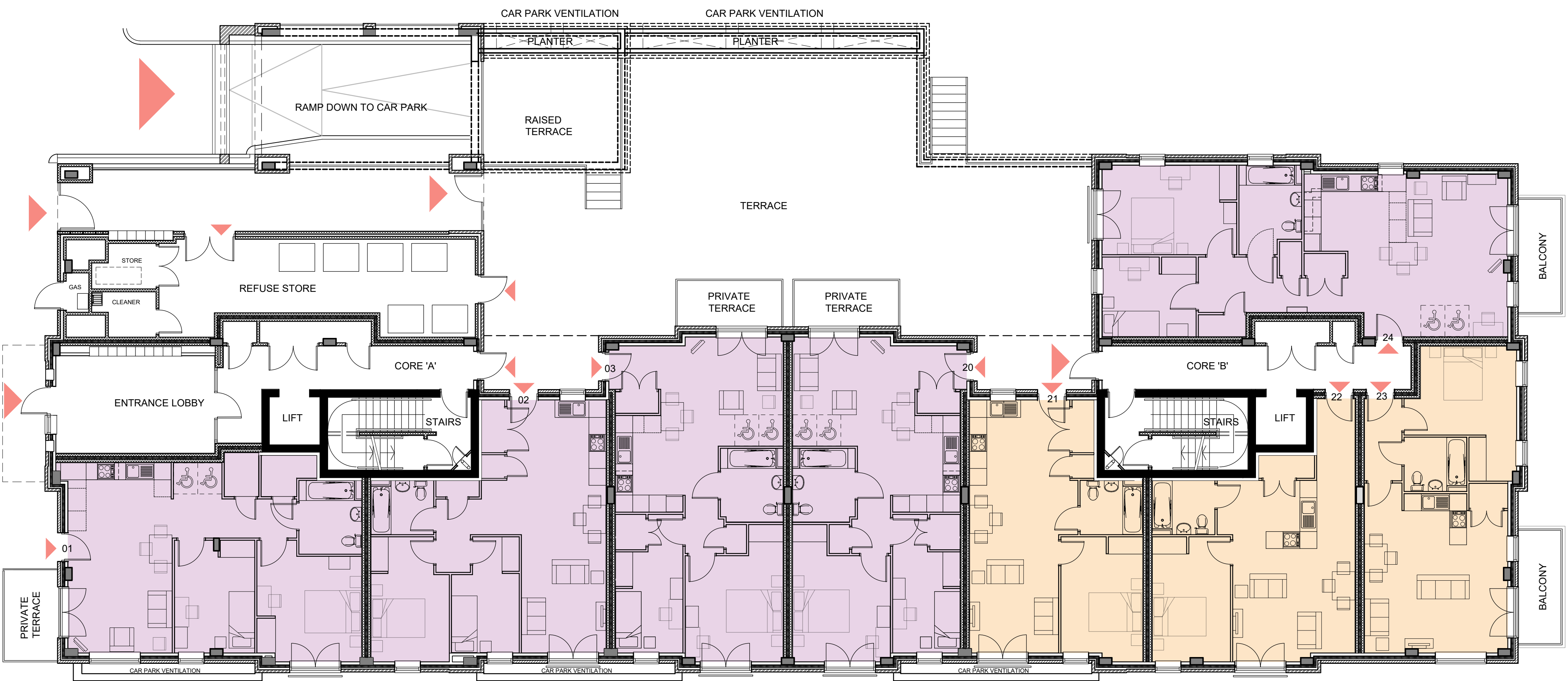
This drawing is only to the stated scale if it is printed correctly. MPLLP cannot accept responsibility for the incorrect scaling of drawings printed by third parties.

All dimensions are in mm unless otherwise stated.

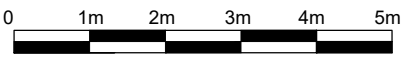
If this drawing forms part of an application for planning permission on behalf of the applicant named below, it shall not be used for any other purpose without the express permission of Mountford Pigott LLP.

This drawing may incorporate information from other professionals. Mountford Pigott LLP cannot accept responsibility for the integrity and accuracy of such information. Any clarification and/or additions that are required appertaining to such information should be sought from the relevant profession or their appointment representative as listed below.

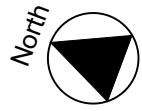
REVISIONS	DATE	DRN	REV
RAMP ADDED, APARTMENTS UPDATED	23/03/18	JM	A
SITE BOUNDARY ADDED	18/04/18	JM	B
HEAD OF RAMP AMENDED, POST BOXES, DRY RISERS ADDED	30/04/18	JM	C
REFUSE STORE, BALCONY SIZE AMENDED	22/06/18	JM	D
TERRACE STEPS AMENDED	24/07/18	JM	E
APARTMENT KEY ADDED	19/10/18	JM	F
PLOT Nos UPDATED TO FLAT Nos	04/05/20	JM	G



GROUND FLOOR PLAN
1:100 @ A1



FANUC HOUSE



MountfordPigott
Architecture Planning Design

1 STATION APPROACH, RUISLIP
GROUND FLOOR PLAN
2088-P11 G

SCALE 1:100 @ A1
DRAWN BY JM

FEB 2018