

Bike Plan

Proposed Change of Use: Residential Dwelling (Class C3) to Residential Care Home (Class C2)

Address: 166 Woodrow Avenue, Hayes, UB4 8QR

Date: March 2026

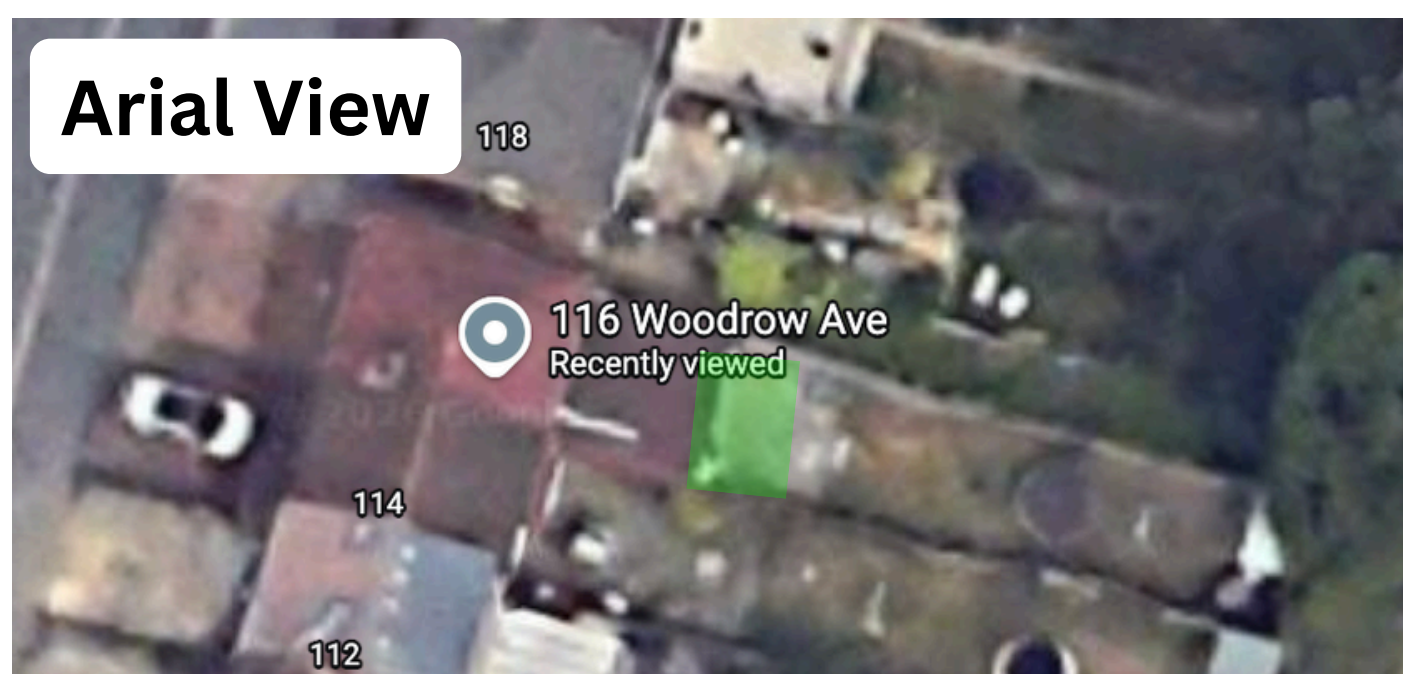
Prepared by:

Haus Planners

Suite Ra01, 195–197 Wood Street

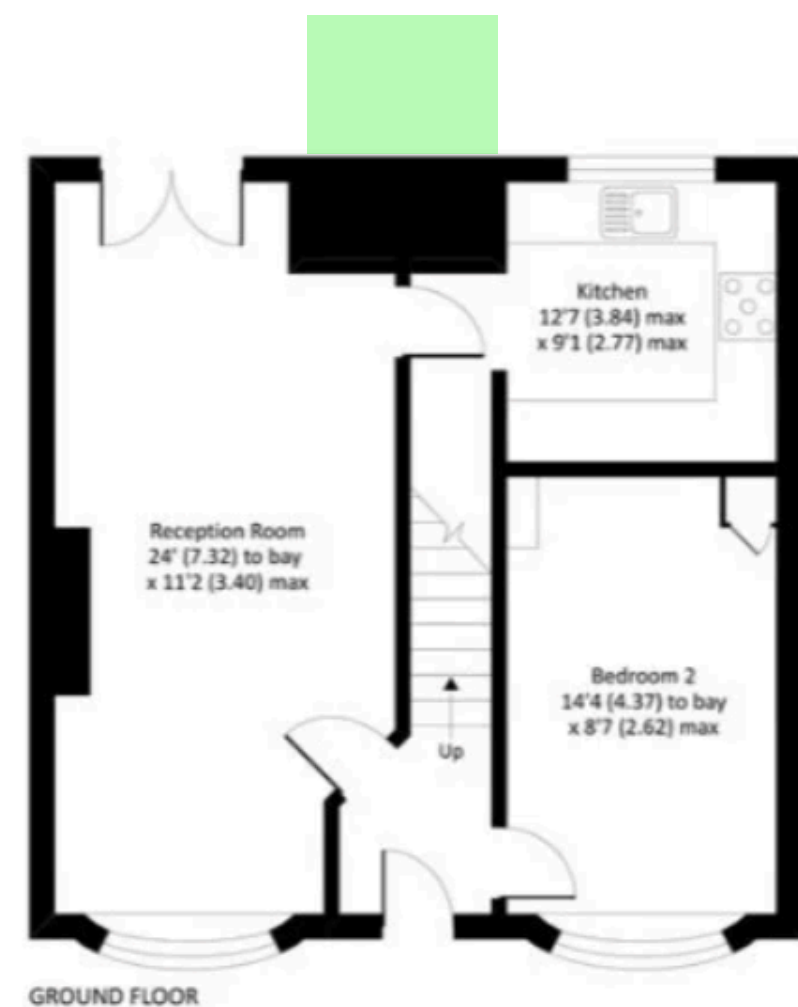
London, E17 3NU

0116 456 0717 | info@hausplanners.com



3 Position Bicycle Stand

- Product size: 680mm x 330mm x 265mm
- Square tube: 30mm x 30mm
- Tube Size: dia. 16mm
- Distance between each parking position: approx. 20cm
- Width of each parking position: approx. 5.5cm



Cycle Storage and Sustainable Transport

To support sustainable and active travel, secure cycle storage will be provided at 116 Woodrow Avenue, Hayes. A weather-resistant cycle rack will be installed at the rear of the property, providing safe and convenient storage for bicycles used by staff, residents, or visitors.

The rack will be securely fixed to a durable hard surface to ensure stability, security, and long-term usability. Its location at the rear ensures that cycle storage is discreet and does not affect the appearance or functionality of the front driveway area.

This provision aligns with the objectives of the London Borough of Hillingdon Local Plan and London Plan Policy T5 (Cycling), both of which promote the provision of secure and accessible cycle parking in order to encourage active travel and reduce reliance on private vehicles.

By combining secure rear cycle storage with compliant on-site parking provision, the proposal at 116 Woodrow Avenue demonstrates a balanced and sustainable approach to transport in line with local and regional planning policy.