

Notes:

- Do not scale from this drawing; work to figured dimensions only.
- All information is to be checked on site for accuracy and fit.
- Report any discrepancies and omissions to RMA Architects.

CDM ERIC Notes



• Where RMA services on a project do not include for site inspections and works surveys, RMA do not warrant that 'as built' issue drawings are a complete and accurate record of what has been constructed

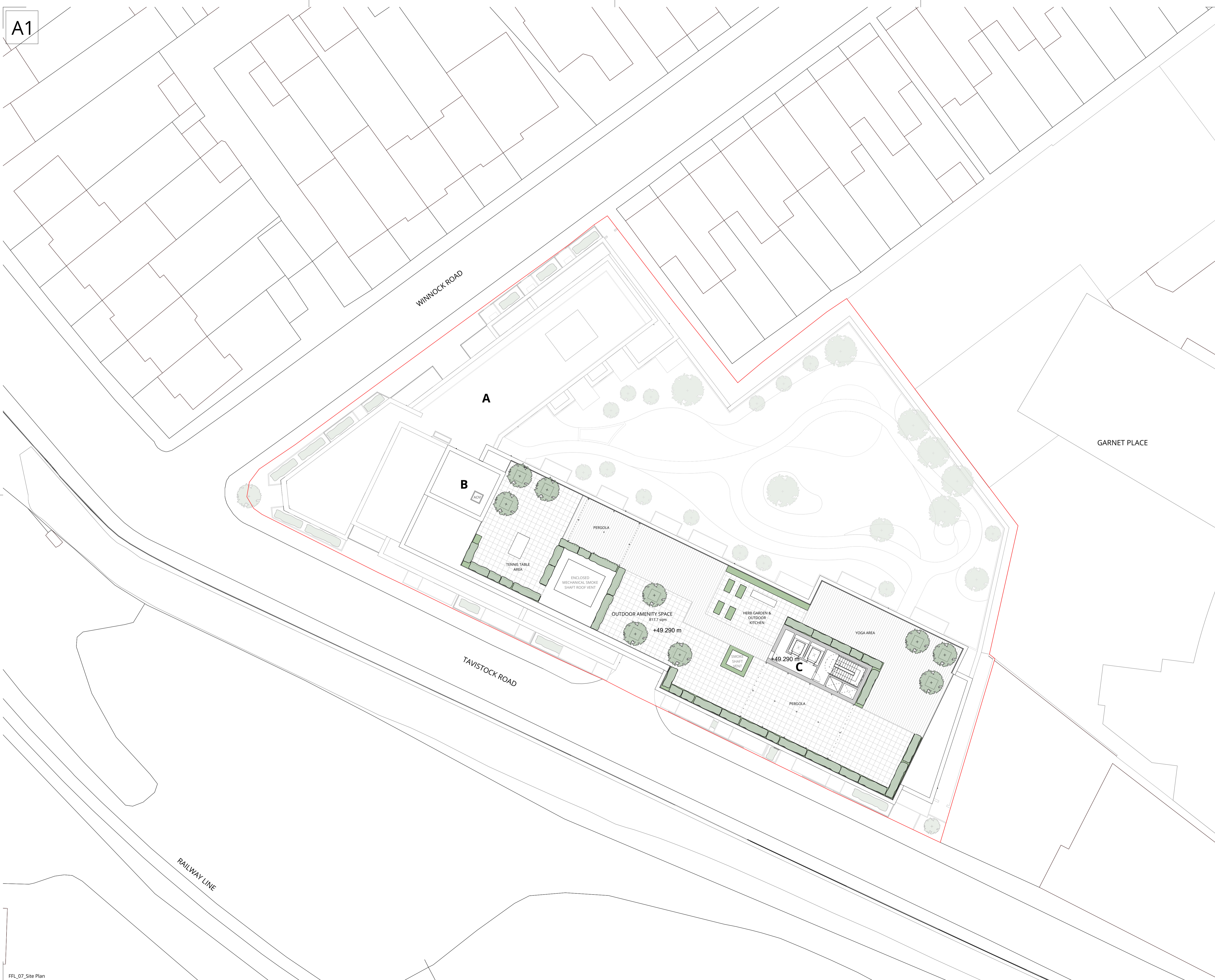
• Unless notified specifically by the responsible party, changes made on site to RMA design information has not been incorporated in this drawing.

SCALE BAR: 1:200 @ A1



GENERAL NOTES:

- Refer to other RMA drawings: 0000 ID: Strategy/Planning diagrams 0000 Schedule
- Read in conjunction with other consultants information: Aspect Landscapes Ltd for Tree Survey and Report, Ecology Statement and Landscape Report, Arden Landscapes Ltd for Transport, Utilities, and Drainage and Flood Risk Strategies, IBI for Height and Sunlight and Rates of Light Analysis.
- All Sustainability Consultants for Energy Statement, Astone Fire for Fire Strategy and Report, Mayer Brown for Air Quality and Noise Statements.



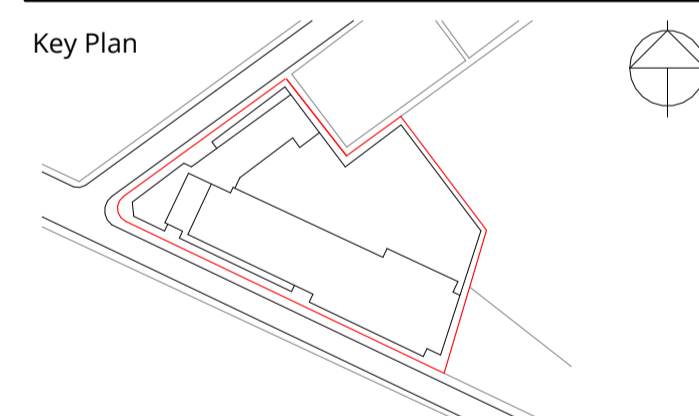
P4	02.08.22	PLANNING ISSUE	AS	CT
P3	18.07.22	CHANGES TO SUBSTATION SIZE AND TO BACK ELEVATION OF DUPLEXES, AND ADDITION OF WINDOW ON NORTH ELEVATION	AS	CT
P2	04.07.22	THIRD ISSUE	AS	CT
P1	01.07.22	SECOND ISSUE	AS	CT
P0	27.06.22	FIRST ISSUE	AS	CT
Rev	Date	Description	By	Chkd

RM_A

320C Highgate Studios
53-79 Highgate Road, London, NWS 1TL
London NWS 1TL

020 7284 1414, rmaarchitects.co.uk © RMA

Key Plan



Project

Comag West Drayton

RMA Project Reference 2211

Client

Bellway Homes Limited

Scale	Date	By	Checked
1:200 @ A1	06/23/22	AS	CT

Drawing Title

SITE PLAN
SEVENTH FLOOR LEVEL

Purpose of Issue	Status Code
PLANNING	S3
Drawing No	Revision
CWD-RMA-ZZ-07-DR-A-0107	P4