

# 4.3 Appearance

## 4.3.4 Reclad to Existing Building Facades

### Tidying and Upgrading

The design propose the removal of the existing facade that is no longer compliant. This provides an opportunity to overhaul the facade, and unify it with the new adjacent blocks.

The proposed composition of a primary Vertical and secondary Horizontal grid is applied to the new re-clad of the existing structure.

Existing windows remain in place, but the use of solid and individual ceramic baguettes tidy up the staggering nature of the windows.

At ground and First floor the grounded coarse concrete used to the new build elements are also continued across the facade.

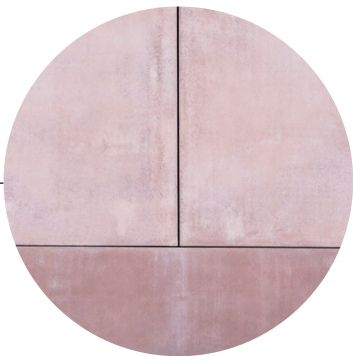
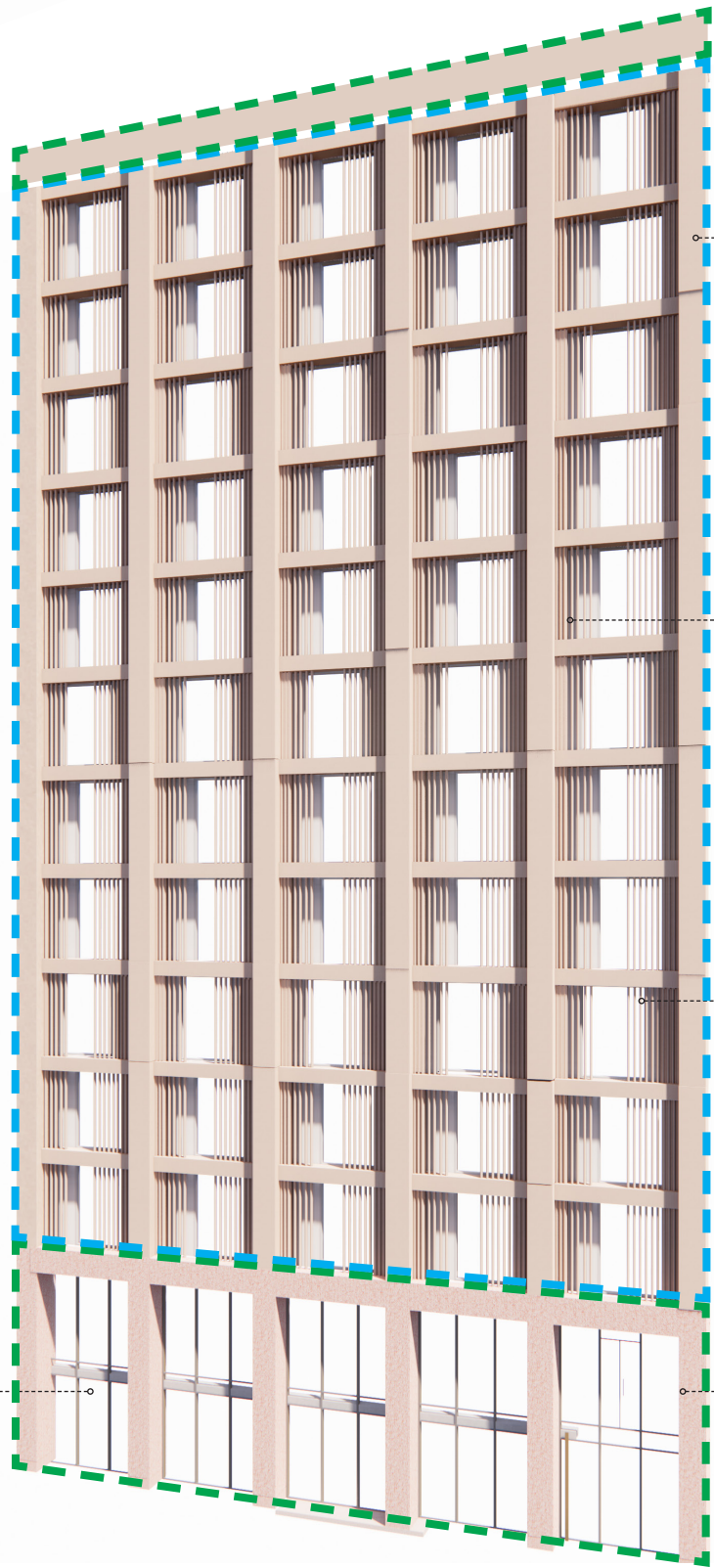
### Key

- Site Boundary
- Re-clad (precast system)
- Re-clad (cement board system)
- Retained as existing

**Windows + Doors**  
Metal framed windows and Doors, using a consistent colour throughout



Existing Facade  
West Elevation



**Pigmented Concrete**  
Offsite constructed Facade panels to ensure high quality finish



**Profiled Concrete**  
A corrugated concrete panel, responding to the local industrial material palette



**Ceramic Baguettes**  
Continuing the grounded material palette, individual baguettes provide a screen to the existing windows



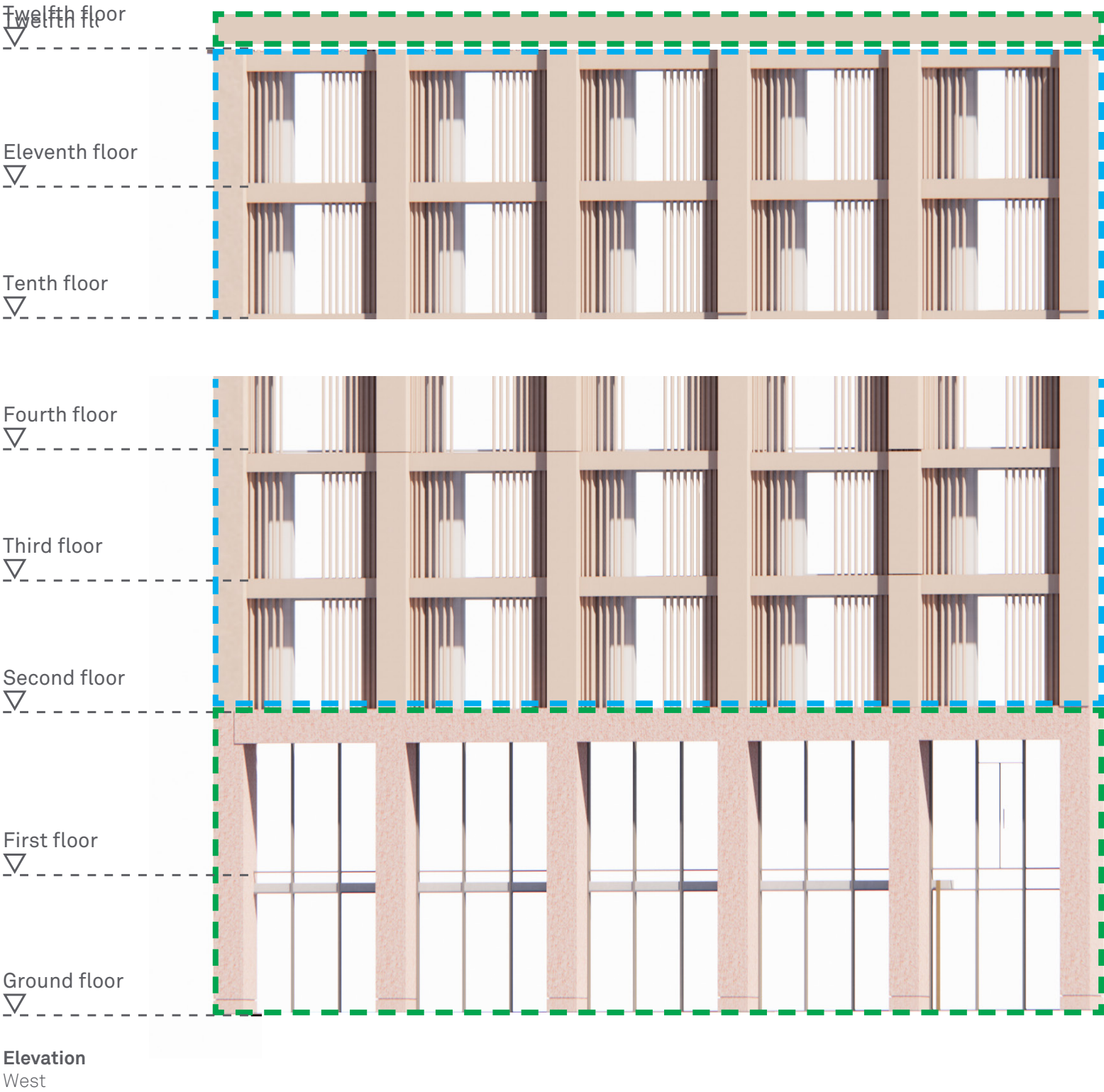
**Pigmented Cement Board**  
A robust material with a rougher texture to the concrete grounds the new facade.

# 4.3 Appearance

## 4.3.4 Reclad to Existing Building Facades

**Ensuring High Quality**  
The removal of the existing facade allows for a new facade to be fixed and built around the existing windows.

- Key**
- Site Boundary
  - Re-clad (precast system)
  - Re-clad (cement board system)
  - Retained as existing

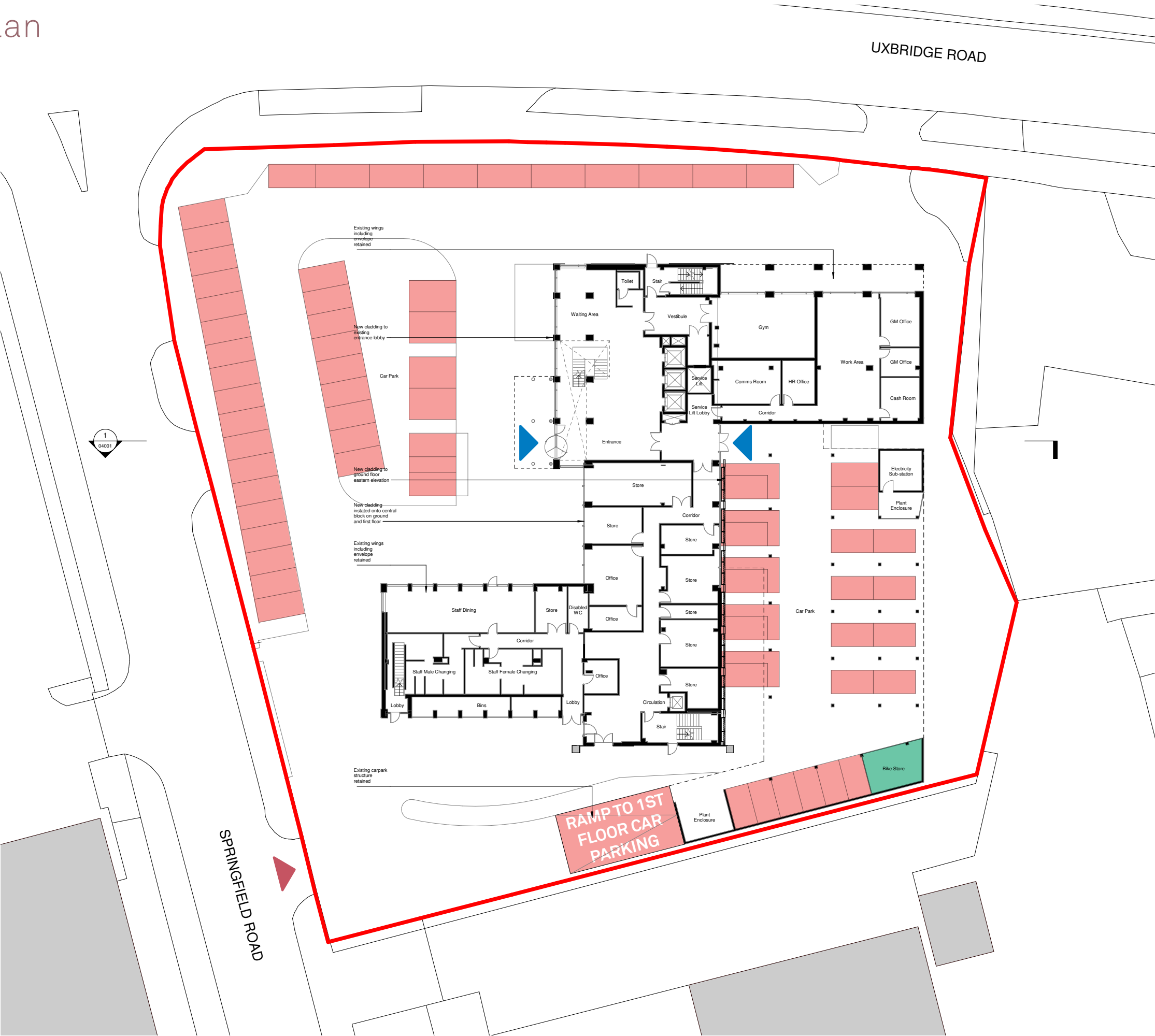


5

Access

# 5.1 Pedestrian, Cycle and Vehicular GA Ground Floor Plan

This proposal retains the existing access strategy. A single point of access into the site for all modes of transport is provided in the site’s south-west corner. Parking surrounds the building on all sides at ground floor level, with a first floor parking deck along its east flank that is accessed via a ramp to the south. The primary pedestrian entrance into the building is to the west elevation at ground level, with secondary entrances provided on the east elevation at ground and first floor level (from the parking deck). A small cycle store is provided in the south-east corner of the site.



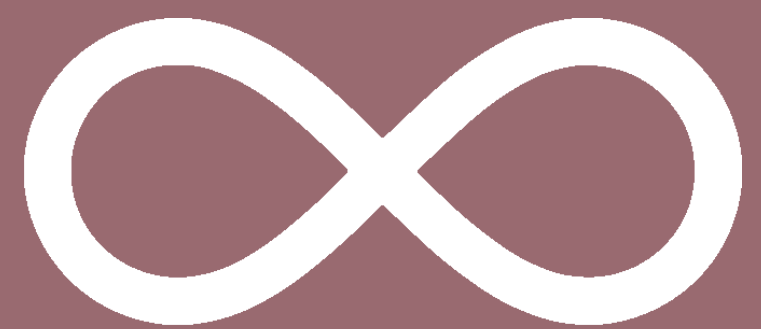
Key

Site entrance

Car Parking

Cycle Parking

Pedestrian Building Entrance



INFINITE

HAPTIC