

3.2 Existing Context

3.2.5 Character and Material

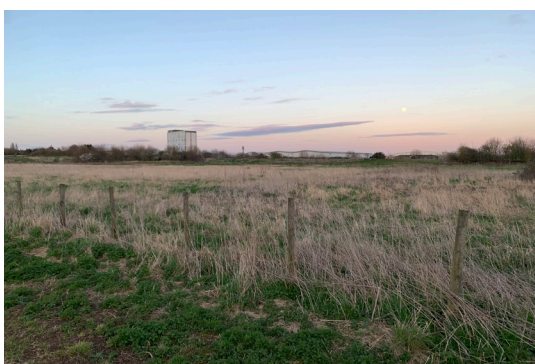
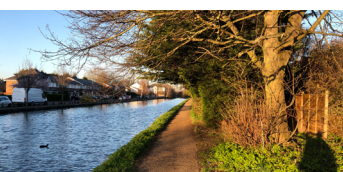
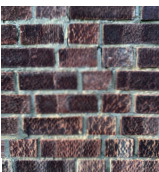
Character Areas

The surrounding area can be summarised into 3 distinct character and material areas. The residential area, which began to emerge in the early to mid 20th Century, consists of brick houses, with pitched roofs and bay windows.

The green space is a mixture of woodland, waterways and open green fields. A tree lined perimeter encompasses each space.

The Industrial and Commercial units consist of steel framed structures, with metal panelling to walls and roofs. Occasional brick buildings also exist within this character area.

The existing site, as with its height, is of a different character altogether to the surrounding context.



RESIDENTIAL

Typically from the early to mid 20th century, a combination of brick and render is used.

NATURAL

Woodland, grassland and waterways make up much of the surrounding natural landscape.

INDUSTRIAL

A typical metal cladding is used across the industrial estate, with moments of brick to some portions of façades.