



Appendix 7.2

FIGURES

BROADWATER LAKE

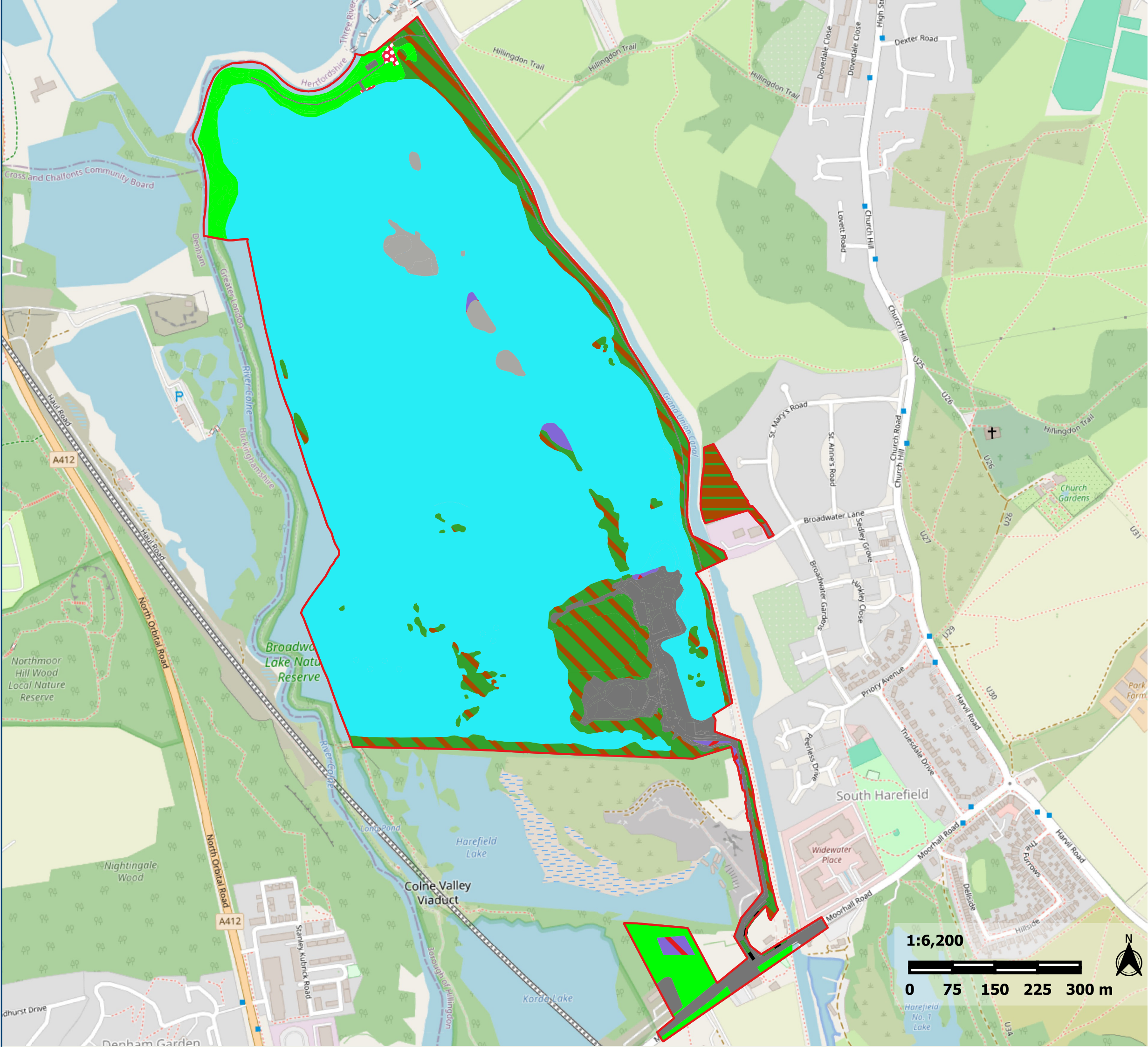
- Legend**
- Red Line Boundary
 - Hedgerow - Baseline
 - Line of trees
 - Habitats - Baseline
 - Artificial unvegetated, unsealed surface
 - Bramble scrub
 - Developed land; sealed surface
 - Introduced shrub
 - Lowland mixed deciduous woodland
 - Mixed scrub
 - Moderate alkalinity lakes
 - Modified grassland
 - Watercourse footprint
 - Ruderal/Ephemeral
 - Wet woodland
 - Willow scrub

Title: Figure 2 Baseline Habitats

Drawn by: LM
Date: 14/08/2025

Reviewed by: SH
Date: 14/08/2025

Project: Hillingdon Water Sports Facility and Activity Centre



BROADWATER LAKE

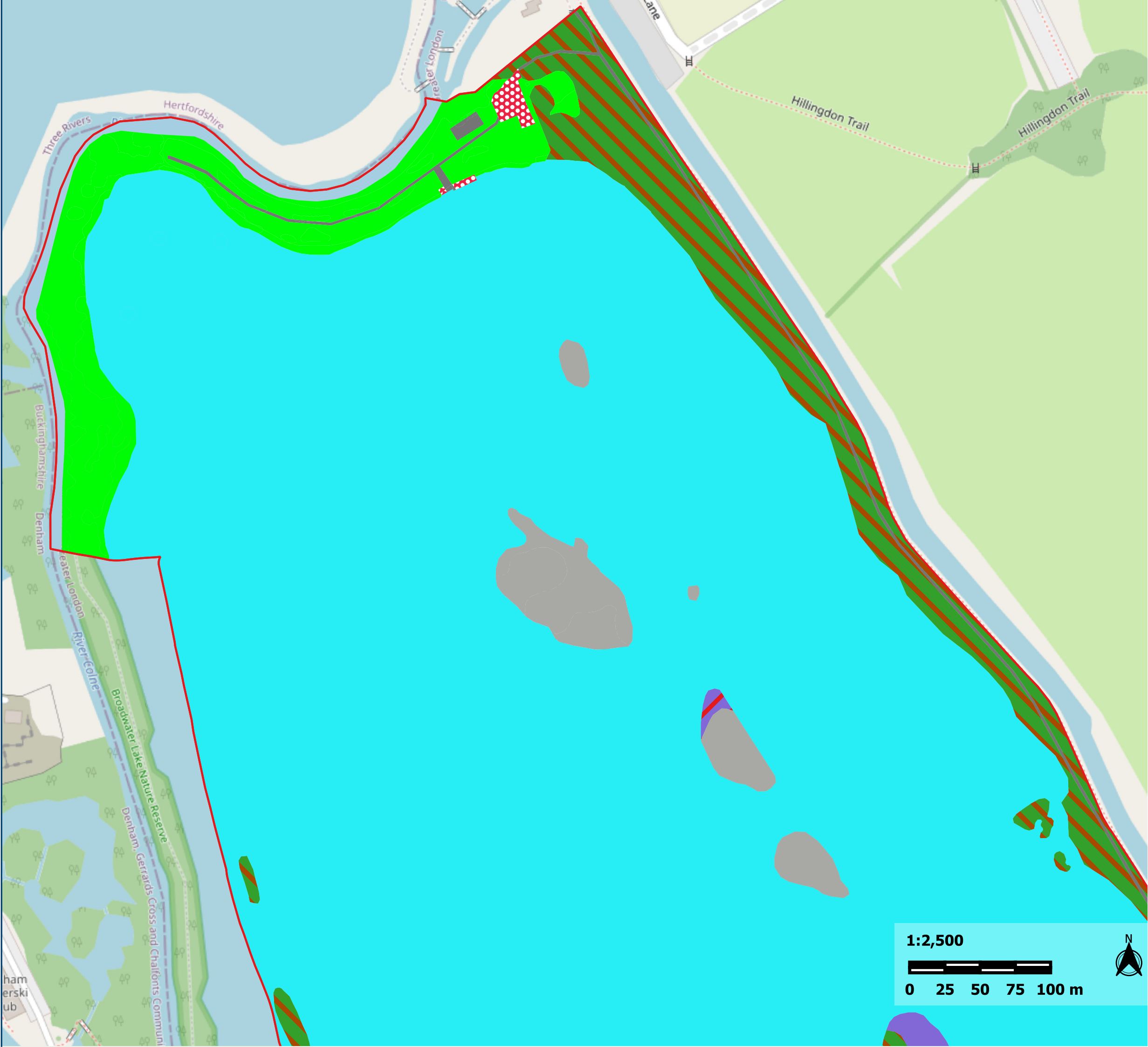
- Legend**
- Red Line Boundary
 - Habitats - Baseline**
 - Artificial unvegetated, unsealed surface
 - Developed land; sealed surface
 - Introduced shrub
 - Mixed scrub
 - Moderate alkalinity lakes
 - Modified grassland
 - Watercourse footprint
 - Ruderal/Ephemeral
 - Wet woodland

Title: Figure 2.1 Baseline Habitats

Drawn by: LM
Date: 14/08/2025

Reviewed by: SH
Date: 14/08/2025

Project: Hillingdon Water Sports Facility and Activity Centre



1:2,500

0 25 50 75 100 m

BROADWATER LAKE

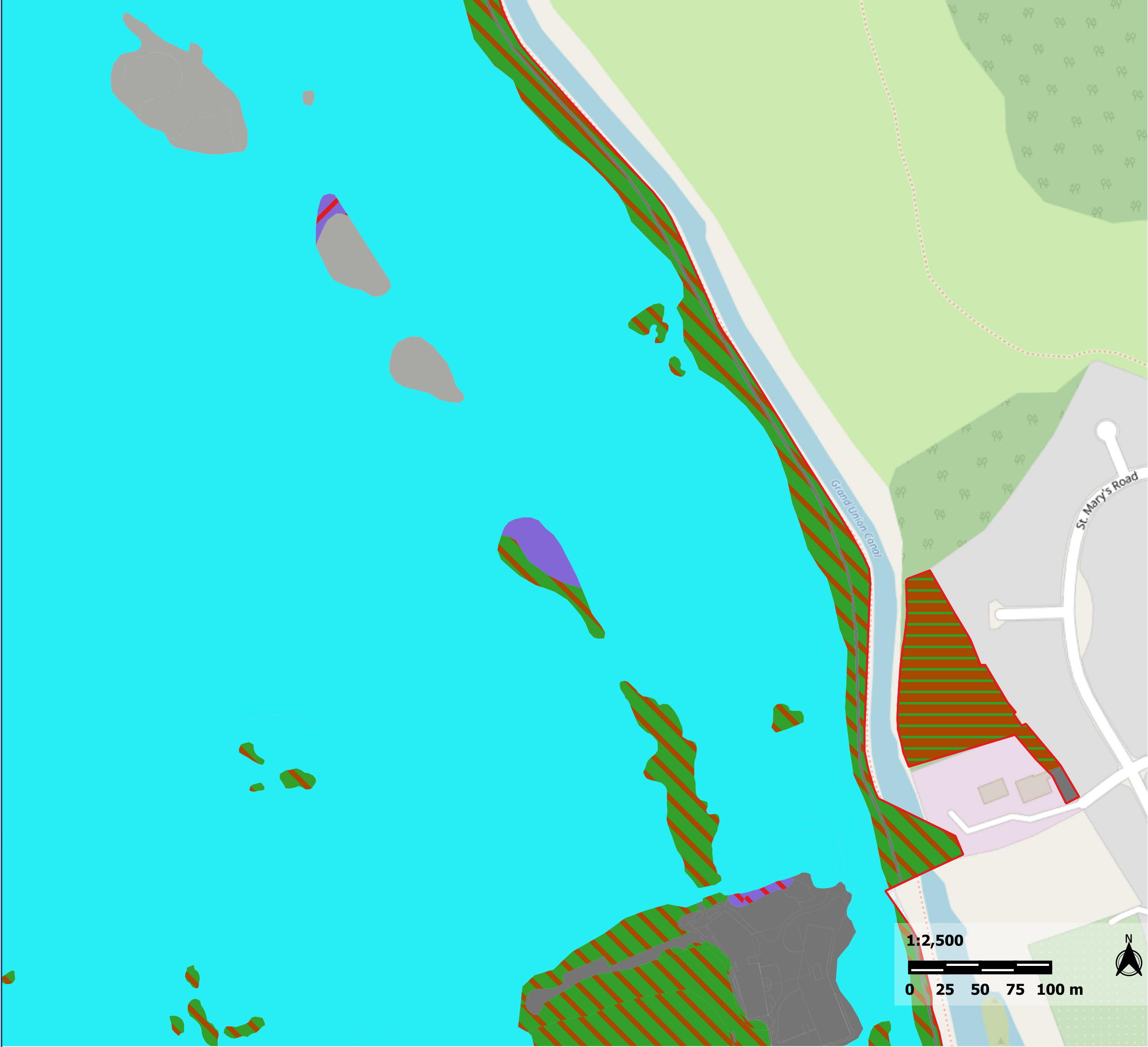
- Legend
- Red Line Boundary
 - Habitats - Baseline
 - Developed land; sealed surface
 - Introduced shrub
 - Lowland mixed deciduous woodland
 - Mixed scrub
 - Moderate alkalinity lakes
 - Ruderal/Ephemeral
 - Wet woodland
 - Willow scrub

Title: Figure 2.2 Baseline Habitats

Drawn by: LM
Date: 14/08/2025

Reviewed by: SH
Date: 14/08/2025

Project: Hillingdon Water Sports Facility and Activity Centre



BROADWATER LAKE

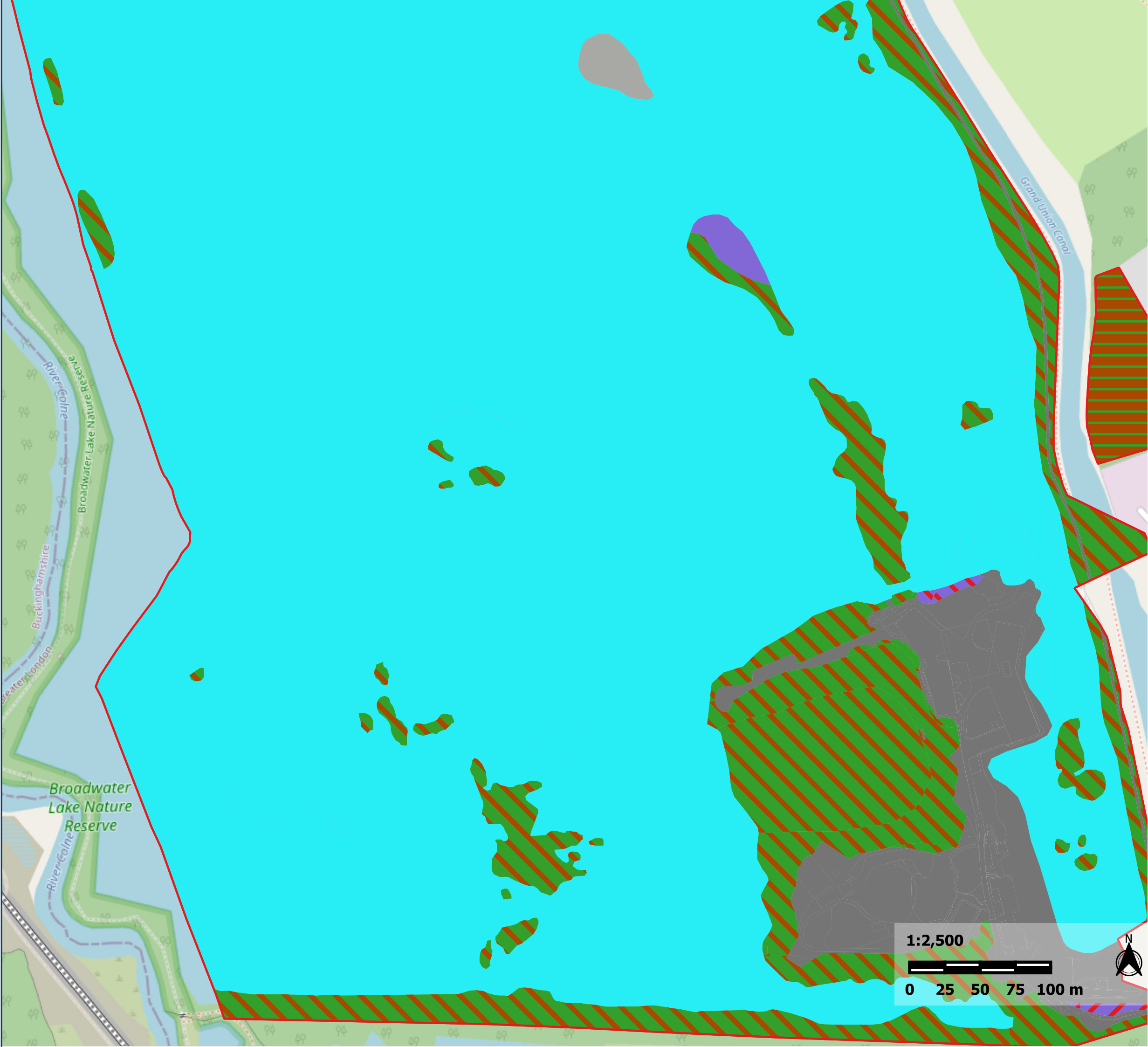
- Legend
- Red Line Boundary
 - Habitats - Baseline
 - Developed land; sealed surface
 - Introduced shrub
 - Lowland mixed deciduous woodland
 - Mixed scrub
 - Moderate alkalinity lakes
 - Ruderal/Ephemeral
 - Wet woodland
 - Willow scrub

Title: Figure 2.3 Baseline Habitats

Drawn by: LM
Date: 14/08/2025

Reviewed by: SH
Date: 14/08/2025

Project: Hillingdon Water Sports Facility and Activity Centre



BROADWATER LAKE

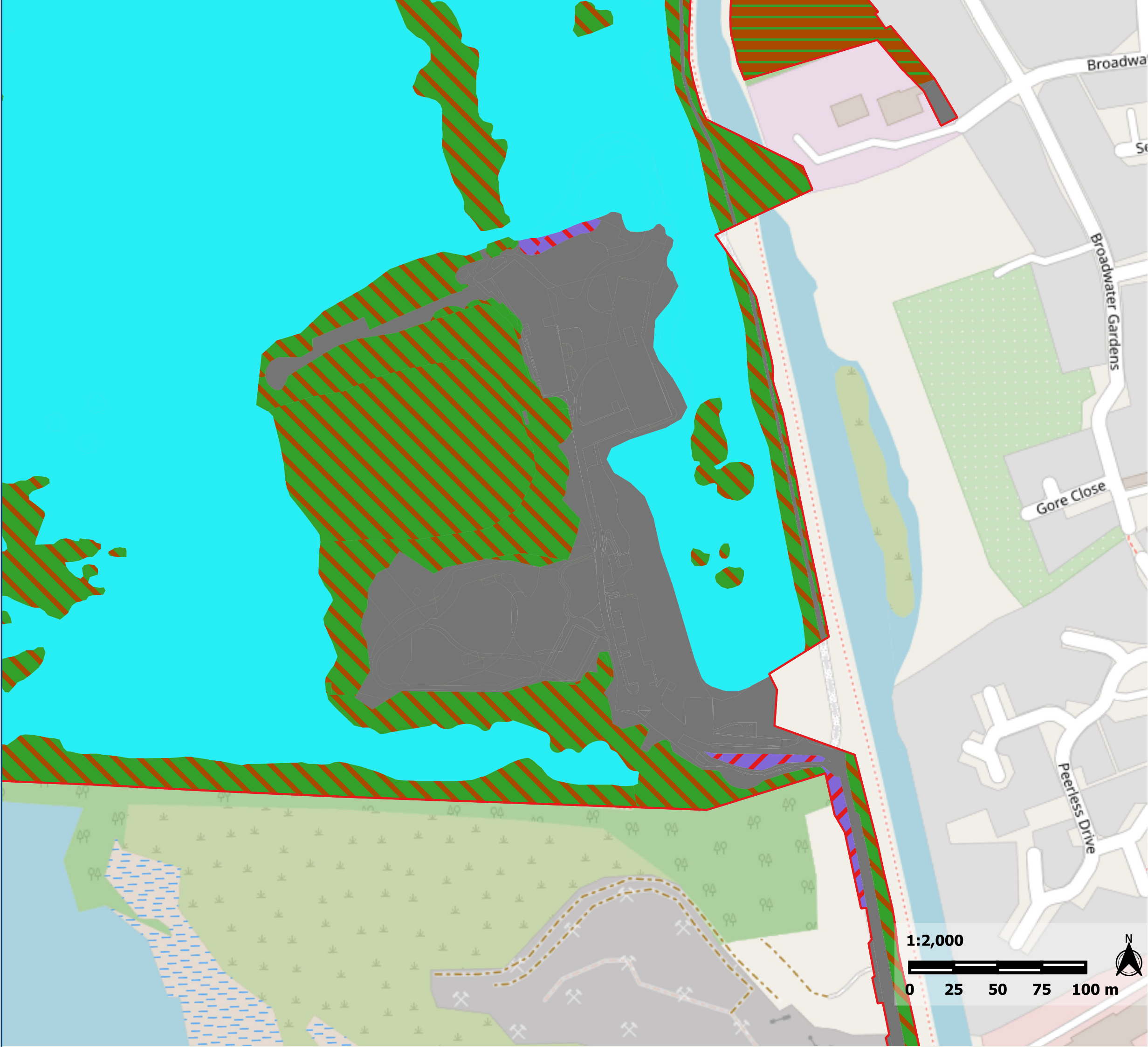
- Legend
- Red Line Boundary
 - Habitats - Baseline
 - Bramble scrub
 - Developed land; sealed surface
 - Lowland mixed deciduous woodland
 - Mixed scrub
 - Moderate alkalinity lakes
 - Wet woodland
 - Willow scrub

Title: Figure 2.4 Baseline Habitats

Drawn by: LM
Date: 14/08/2025

Reviewed by: SH
Date: 14/08/2025

Project: Hillingdon Water Sports Facility and Activity Centre



BROADWATER LAKE

- Legend**
- Red Line Boundary
 - Hedgerow - Baseline
 - Line of trees
 - Habitats - Baseline
 - Bramble scrub
 - Developed land; sealed surface
 - Mixed scrub
 - Moderate alkalinity lakes
 - Modified grassland
 - Wet woodland
 - Willow scrub

Title: Figure 2.5 Baseline Habitats

Drawn by: LM
Date: 14/08/2025

Reviewed by: SH
Date: 14/08/2025

Project: Hillingdon Water Sports Facility and Activity Centre

