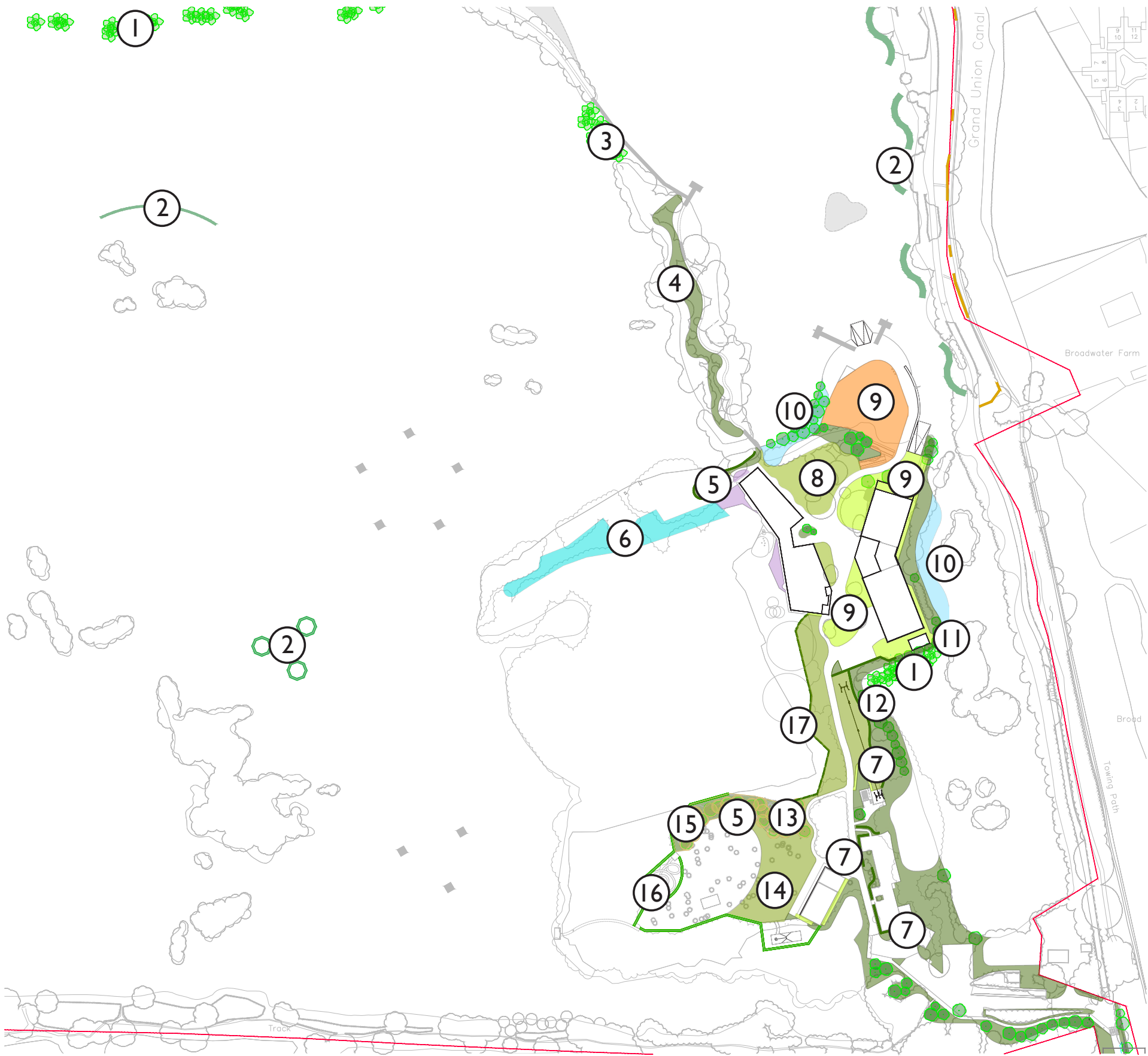




PLANTING STRATEGY



Refer to drawing HWSFAC-COL-00-XX-DR-L-5002 - 5005



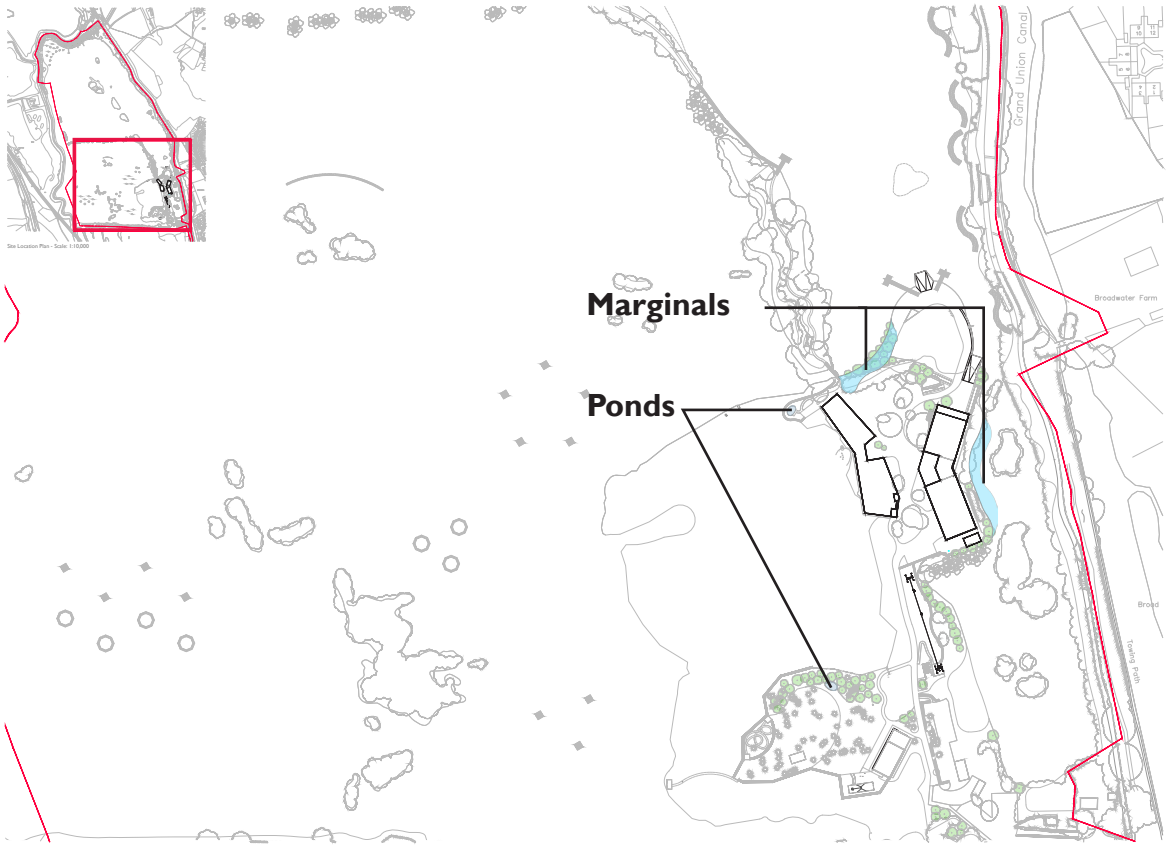
Proposed planting treatments are ecologically led as follows:

1. Native willow and alder planting within submerged planters
2. Floating reedbeds
3. Dense native willow and alder planting within submerged planters
4. Native tree and scrub planting
5. Native emergent and aquatic planting to wildlife pond
6. Wet woodland planting to infill former access track
7. Native hedges, scattered specimen trees, and perennial ground flora planting to proposed access road, boat an car parking
8. Species rich flowering lawn mixture
9. Wildflower lawn mixture to areas of grasscrete and gravel boat storage
10. Native marginal planting
11. Dense native woodland and scrub to prevent visual disturbance from the peninsula into the eastern lagoon
12. Native thorn hedge on the land side of the buffer to deter access to the lagoon
13. Orchard of historic local apple and pear varieties
14. Species rich grasses to camping area
15. Native broadleaved tree planting
16. Green wall with native climbers to provide a green wildlife-friendly acoustic barrier between the woodland and activity area
17. Live woven willow barrier

General:

- Coppice and pollardind of existing trees as per Arboricultural Management Plan
- Woodland management of existing trees

Note: Avoidance of poisonous plants because of the use by school children.



Native trees including fruiting species to provide foraging and nesting habitat for a range of wildlife

POTENTIAL SPECIES LIST

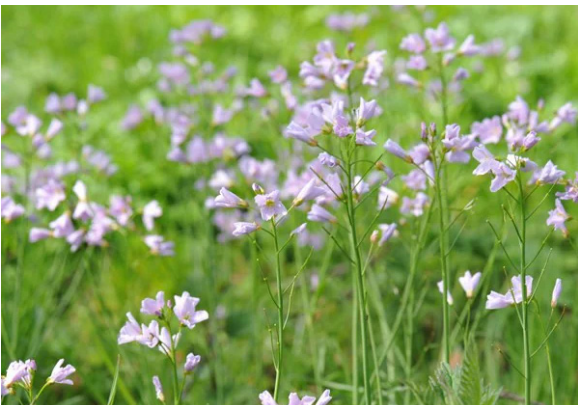
- Eupatorium cannabinum* - Hemp agrimony
- Pulicaria dysenterica* – Common fleabane
- Butomus umbellatus* – Flowering rush
- Cardamine pratensis* – Cuckooflower
- Caltha palustris* – Marsh marigold
- Dactylorhiza praetermissa* – Southern marsh orchid
- Dactylorhiza fuchsii* – Common spotted orchid
- Dactylorhiza incarnata* – Early marsh orchid
- Filipendula ulmaria* – Meadowsweet
- Geum rivale* – Water avens
- Iris pseudacorus* –Yellow iris
- Lychnis flos-cuculi* – Ragged robin
- Lythrum salicaria* – Purple loosestrife
- Juncus effusus* – Soft Rush
- Succisa pratensis* – Devil's-bit scabious



Butomus umbellatus



Caltha palustris



Cardamine pratensis



Dactylorhiza fuchsii



Dactylorhiza praetermissa



Eupatorium cannabinum



Filipendula ulmaria



Geum rivale



Iris pseudacorus



Lychnis flos-cuculi



Lythrum salicaria



Juncus effusus



Succisa pratensis