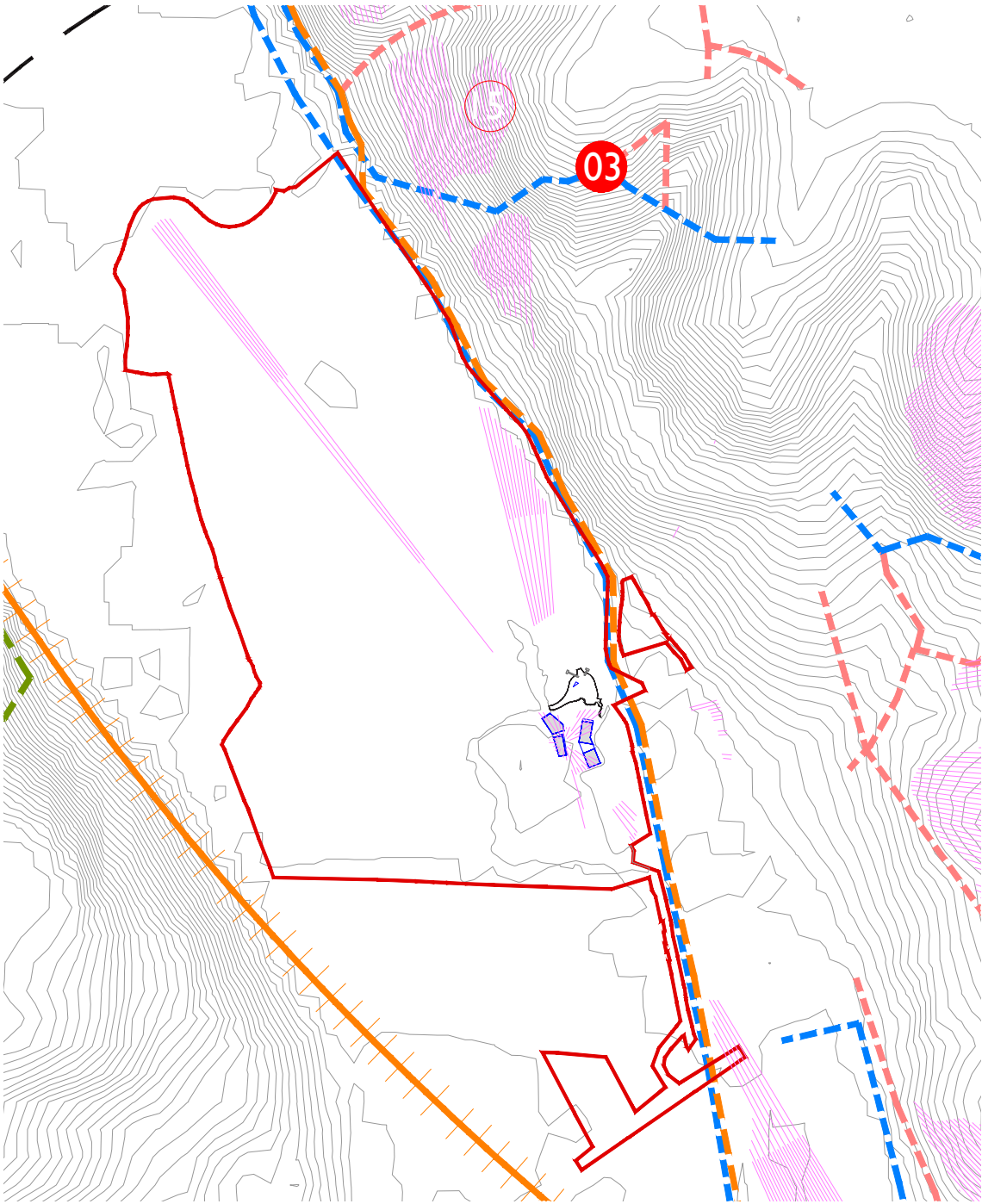


VIEW 03 - WINTER - BASELINE WITH MODELLED COLNE VALLEY VIADUCT



VIEWPOINT DATA	
View Looking From	Public Right of Way (PROW) off Merle Avenue southwest of Harefield
Grid Reference	E 504771 N 190261
Distance from Site	997m
Bearing to Site	193°
Viewpoint Elevation	79m
PHOTOGRAPH	
Horizontal Field of View	53.5° (Planar Projection)
Camera Height	1.6m above ground
Camera Type	Sony Alpha 7 III
Camera Lens	50mm fixed prime
Weather Condition	Cloudy
Time Taken	12.40pm
Date	07.03.2023
Paper Size	A1 sheet 841mm x 594mm
Correct Printed Image Size	820x250mm
CLASSIFICATION OF RECEPTOR	
Receptors	Recreational users of footpaths
Sensitivity	High - footpath

VIEW FLAT AT A COMFORTABLE ARMS LENGTH  
IF VIEWING THIS IMAGE ON A SCREEN, ENLARGE TO FULL SCREEN HEIGHT VIEWPORT



The use of drawings by the Customer acts as an agreement to the following statements. The Customer must not use the drawings if it does not agree with any of the following statements:  
All drawings are based upon site information supplied by third parties and as such their accuracy cannot be guaranteed. All features are approximate and subject to clarification by a detailed topographical survey statutory service enquiries and confirmation of the legal boundaries. Do not scale the drawings. Figured dimensions must be used in all cases. All dimensions must be checked on site. Any discrepancies must be reported in writing to Colour-UDL before proceeding. All drawings are copyright protected. Refer to full Terms & Conditions at [www.colour-udl.com](http://www.colour-udl.com)

P07	Building amended	06.11.25	JR	PO
P06	Building amended	13.08.25	JR	PO
P05	Title amended	25.07.25	JR	PO
P04	Key plan updated	07.10.24	JR	PO
P03	Buildings location amended	14.08.24	JR	PO
P02	Building level amended	29.03.23	AH	PO
P01	First Issue	22.06.23	AH	PO
Rev	Amendments	Date	Drwn	Chkd

Project  
HWSFAC Broadwater Lakes  
Drawing Title  
Photographic Viewpoints - Viewpoint 03 - Baseline with modelled Colne Valley viaduct

Project No.	Scale @ A1	Project Status
2121	NTS	Information
Drawing No.		Revision
HWSFAC-COL-XX-XX-DR-L-6104		P07

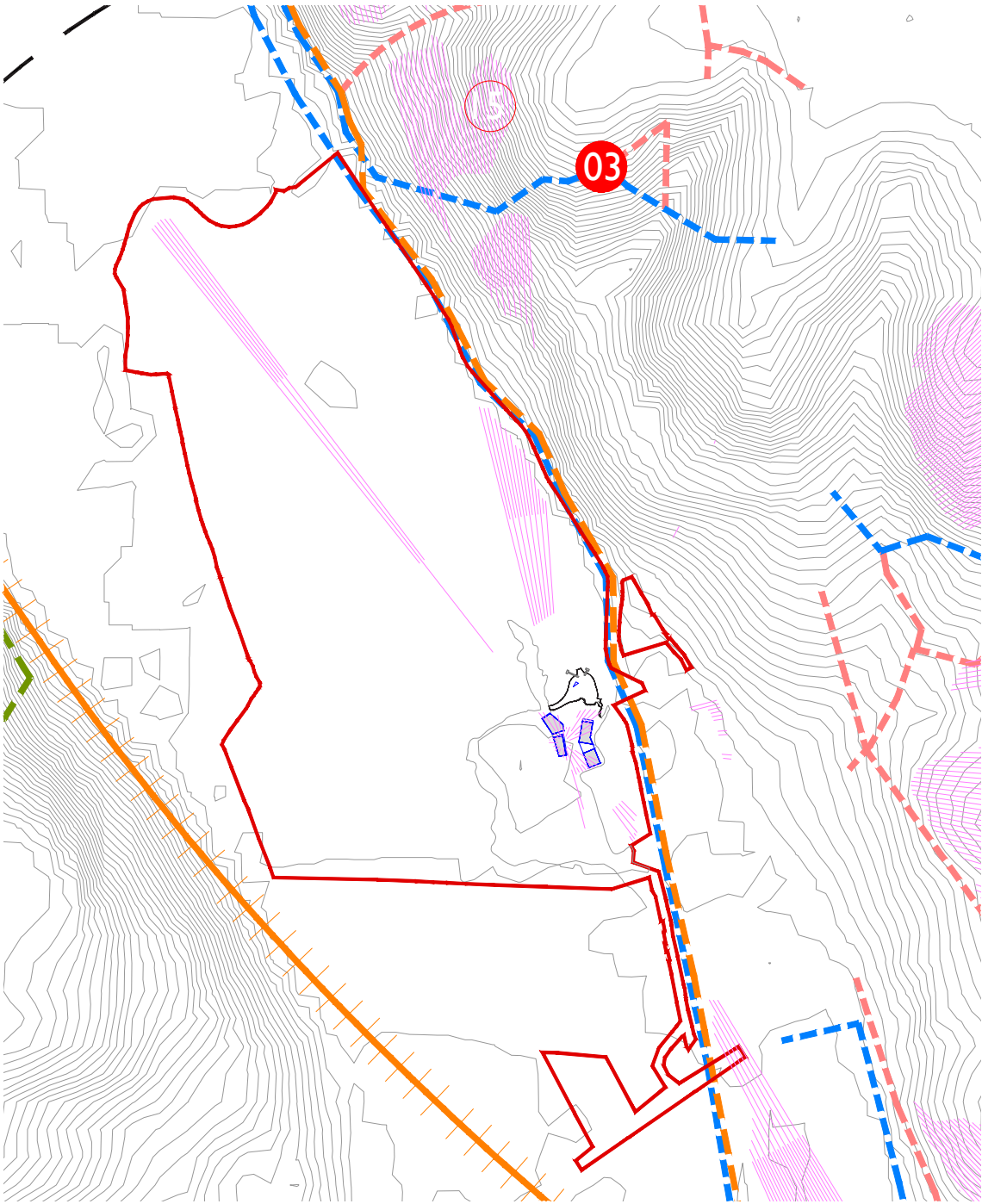


VIEW 03 - WINTER - REVISED PROPOSALS



VIEWPOINT DATA	
View Looking From	Public Right of Way (PROV) off Merle Avenue southwest of Harefield
Grid Reference	E 504771 N 190261
Distance from Site	997m
Bearing to Site	193°
Viewpoint Elevation	79m
PHOTOGRAPH	
Horizontal Field of View	53.5° (Planar Projection)
Camera Height	1.6m above ground
Camera Type	Sony Alpha 7 III
Camera Lens	50mm fixed prime
Weather Condition	Cloudy
Time Taken	12.40pm
Date	07.03.2023
Paper Size	A1 sheet 841mm x 594mm
Correct Printed Image Size	820x250mm
CLASSIFICATION OF RECEPTOR	
Receptors	Recreational users of footpaths
Sensitivity	High - footpath

VIEW FLAT AT A COMFORTABLE ARMS LENGTH  
IF VIEWING THIS IMAGE ON A SCREEN, ENLARGE TO FULL SCREEN HEIGHT VIEWPORT



The use of drawings by the Customer acts as an agreement to the following statements. The Customer must not use the drawings if it does not agree with any of the following statements:  
All drawings are based upon site information supplied by third parties and as such their accuracy cannot be guaranteed. All features are approximate and subject to clarification by a detailed topographical survey statutory service enquiries and confirmation of the legal boundaries. Do not scale the drawings. Figured dimensions must be used in all cases. All dimensions must be checked on site. Any discrepancies must be reported in writing to Colour-UDL before proceeding. All drawings are copyright protected. Refer to full Terms & Conditions at [www.colour-udl.com](http://www.colour-udl.com)

P07	Building amended	06.11.25	JR	PO
P06	Building amended	13.08.25	JR	PO
P05	Title amended	25.07.25	JR	PO
P04	Key plan updated	07.10.24	JR	PO
P03	Buildings location amended	14.08.24	JR	PO
P02	Building level amended	29.03.23	AH	PO
P01	First Issue	22.06.23	AH	PO
Rev	Amendments	Date	Drwn	Chkd

Project  
HWSFAC Broadwater Lakes  
Drawing Title  
Photographic Viewpoints - Viewpoint 03 - Revised proposals

Project No. 2121	Scale @ A1 NTS	Project Status Information
Drawing No. HWSFAC-COL-XX-XX-DR-L-6105		Revision P07