

The use of drawings by the Customer acts as an agreement to the following statements. The Customer must not use the drawings if it does not agree with any of the following statements:
All drawings are based upon site information supplied by third parties and as such their accuracy cannot be guaranteed. All features are approximate and subject to clarification by a detailed topographical survey, statutory service enquiries and confirmation of the legal boundaries. Do not scale the drawings. Figured dimensions must be used in all cases. All dimensions must be checked on site. Any discrepancies must be reported in writing to Colour+UDI, before proceeding. All drawings are copyright protected. Refer to full Terms & Conditions at www.colour-udi.com

- Measured radii from site
- 3.0km
- Site red line boundary
- Project area boundary
- Undulating farmlands
- Valley sides
- Valley floor
- Tributary Valley
- River Terrace

P01	First Issue		17/04/23	JR	PO
Rev	Amendments		Date	Drwn	Chkd

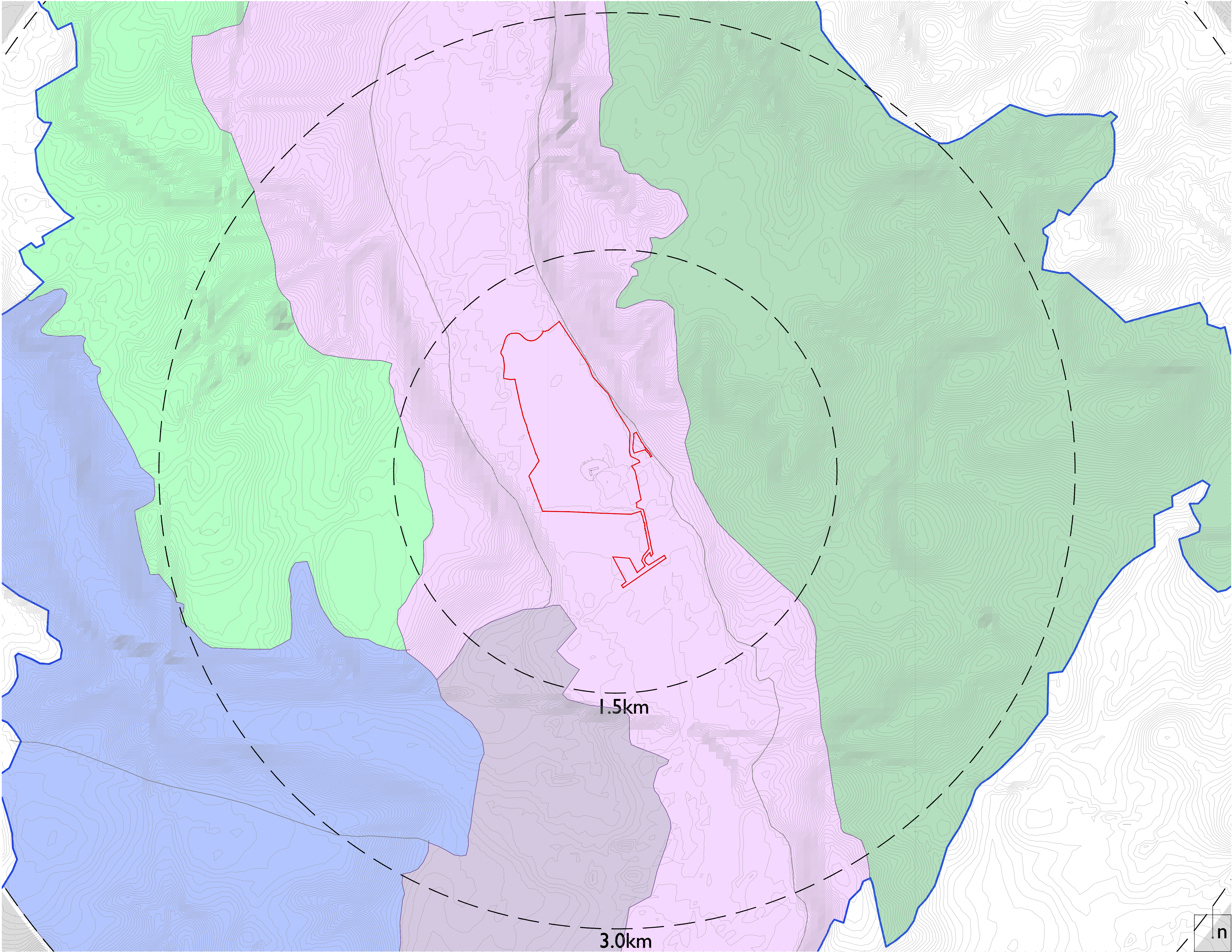
Project
HOAC - Broadwater Lakes
Drawing Title
Landscape Character Types

Project No. 2121	Scale @ A1 NTS	Project Status S2 - For Information
Drawing No. HBL-COL-00-XX-DR-L-6007		Revision P01

London
Newcastle
York

0207 38 78 560
0191 24 24 224
01904 925 888
colour-udi.com

colour



The use of drawings by the Customer acts as an agreement to the following statements. The Customer must not use the drawings if it does not agree with any of the following statements:
All drawings are based upon site information supplied by third parties and as such their accuracy cannot be guaranteed. All features are approximate and subject to clarification by a detailed topographical survey, statutory service enquiries and confirmation of the legal boundaries. Do not scale the drawings. Figured dimensions must be used in all cases. All dimensions must be checked on site. Any discrepancies must be reported in writing to Colour:UDL, before proceeding. All drawings are copyright protected. Refer to full Terms & Conditions at www.colour-udl.com

- Measured radii from site
- 3.0km
- Site red line boundary
- Project area boundary
- Denham Valley Floor
- Colne Valley:
Richmansworth to Uxbridge
- Heronsgate/Chalfont
Farmland
- Rickmansworth to Uxbridge
Wooded Farmland
- Misbourne and Alder
Broune Tributaries

P01	First Issue		17/04/23	JR	PO
Rev	Amendments		Date	Drwn	Chkd

Project
HOAC - Broadwater Lakes
Drawing Title
Landscape Character Areas - North

Project No. 2121	Scale @ A1 NTS	Project Status S2 - For Information
Drawing No. HBL-COL-00-XX-DR-L-6008		Revision P01

London
Newcastle
York

0207 38 78 560
0191 24 24 224
01904 925 888
colour-udl.com

colour