



1 Block A&B - N Elevation
1 : 200



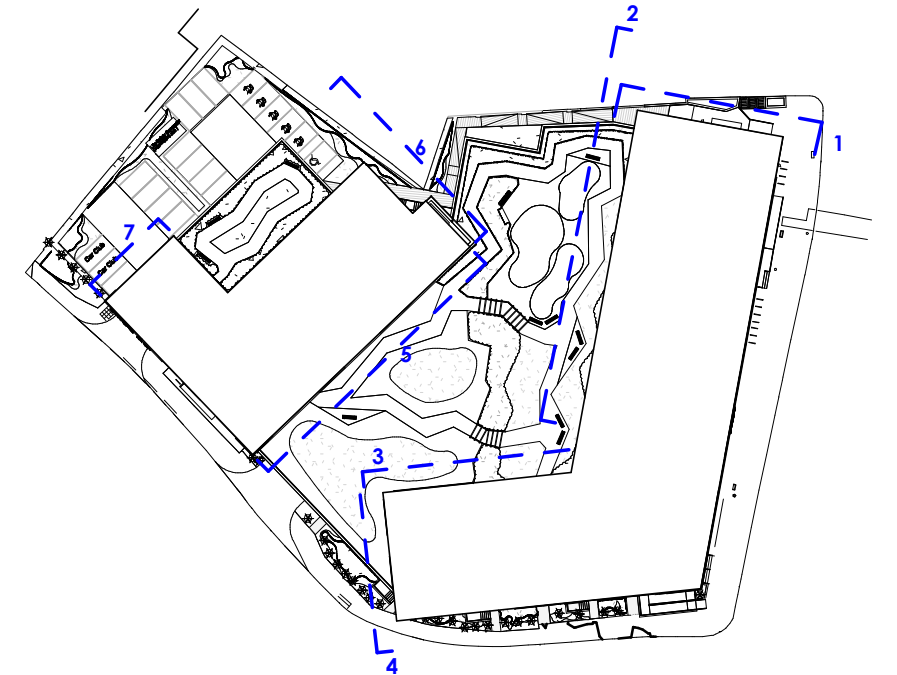
2 Block A&B - Podium - NW Elevation
1 : 200



3 Block A&B - Podium - N Elevation
1 : 200



4 Block A&B - Podium -W Elevation
1 : 200



5 Block C - Podium - SE Elevation
1 : 200



6 Block C - NE Elevation
1 : 200



7 Block C - NW Elevation
1 : 200

hester
Architects
limited

2 Drayton House Court
Dorchester Road
Drayton St. Leonard
Oxfordshire, OX10 7BG
T: 01865 - 893 900
F: 01865 - 893 901
E: mail@hesterarchitects.co.uk
W: www.hesterarchitects.co.uk

CDM NOTES:

CDM REGULATION 2015 : DESIGNERS NOTES ON SIGNIFICANT RESIDUAL RISKS

In preparing this design Hester Architects have attempted to avoid using materials and techniques which could cause future hazards whilst constructing, using, maintaining or de-commissioning the building.

The following risks could not be designed out and should be carefully monitored on site during the construction period and during any future maintenance of the structure. These notes relate solely to information shown on this drawing. Only significant risks which are considered to be unusual, or unlikely to be obvious to a competent contractor or other designer will be highlighted. This information is subject to revision as the design develops.

Particularly hazardous areas are highlighted with  on the drawing and noted adjacent



VISUAL SCALE 1:200 @ A1

K	13Mar25	General
J	12Nov24	Revised Planning Issue
H	22Jan24	Amendments following UD comments.
G	18May23	Draft Planning Issue
F	31Mar23	Minor Amendments to Northern corner adjacent to Warehouse
E	16Mar23	Stair added to Sprinkler Pump
D	14Mar23	Vent. Units Suggested
C	23Feb23	Amendments
B	21Feb23	Design Progression
A	23Jan23	Block C Columns Added
Revision	Date	Notes

For Harbourside Investments Ltd & WM Morrison Supermarkets PLC
Project
Morrison's High Street
Viewsley

Drawing Title
Proposed Rear Elevations

This document is the Copyright work of .hester. architects ltd. unless formally assigned in writing.

Scale	As indicated @ A1	
Drawn by	Date	Checked
RI	11.01.23	
Job No.	Drawing No.	Rev.
22050	2-201	K