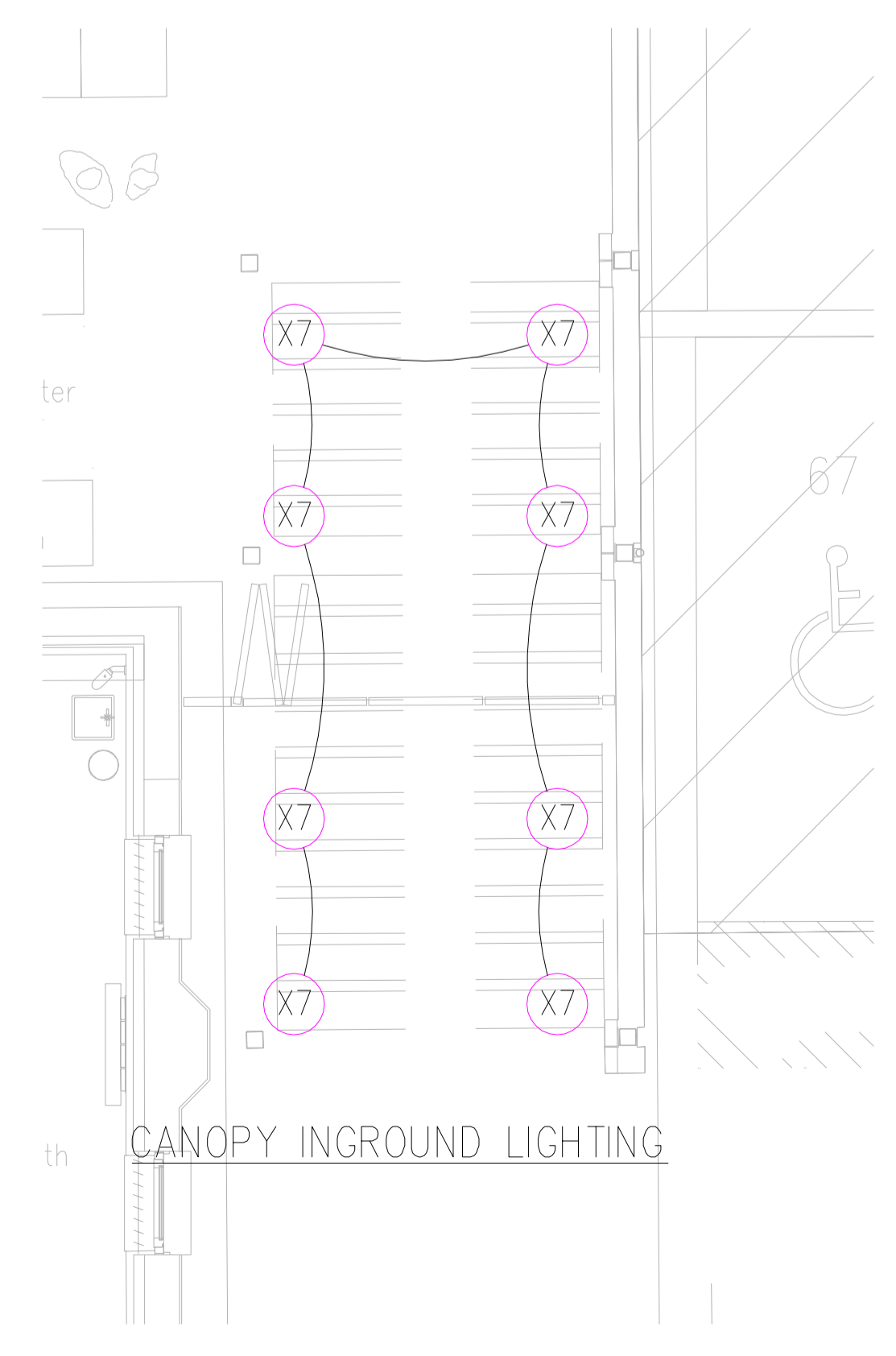


- LEGEND**
- X1 4M COLUMN MOUNTED LED LUMINAIRE
 - X3 IP65 RATED WALL MOUNTED ARCHITECTURAL FLOODLIGHT
 - X4 IP64 RATED WALL MOUNTED BULKHEAD
 - X5 X7 IP65 IN-GROUND UPLIGHTER
 - X6 LIGHTING BOLLARD
 - EM IP65 MAINTAINED LED EMERGENCY LIGHTING BULKHEAD
 - EXTERNAL FEEDER PILLAR
 - X ELECTRIC VEHICLE CHARGE POINT. 'X' DENOTES TYPE:
 - FC - FAST CHARGE POINT
 - RC - RAPID CHARGE POINT
 - F - FUTURE
 - BRACKET MOUNTED EXTERNAL CCTV CAMERA
 - COLUMN MOUNTED EXTERNAL CCTV CAMERA (ANPR DENOTES SEPARATE CAMERA SUPPLIED AS PART OF ANPR SYSTEM)
 - CABLE ACCESS BOXES AND/OR CABLE PITS TO BE DESIGN / SELECTED BY CONTRACTOR COVER PLATES TO BE PROVIDED TO MATCH LOCATION
 - HV 125MM DIA DUCTING FOR HV INCOMER.
 - LV 125MM DIA DUCTING FOR LV INCOMER.
 - SUB 150MM DIA LV RIDGICOLL DUCTING - FEEDER PILLAR SUB-MAINS
 - EVC 150MM DIA LV RIDGICOLL DUCTING - ELECTRIC VEHICLE CHARGING
 - LSP 110MM DIA / 94MM DIA ID LV RIDGICOLL DUCTING FOR LIGHTING AND POWER
 - 63MM DIA / 50MM DIA ID EXTERNAL CCTV / SECURITY LV RIDGICOLL DUCTING

- NOTES:**
- CONTRACTOR SHALL PROVIDE PASSIVE DUCTS AND CHAMBERS FOR EVC NETWORK REQUIRED TO SERVE REMAINING PARKING BAYS FROM CURRENT 2 NO. EVCs BEING PROVIDED:
 - 1 NO. 50KW TWIN RAPID CHARGER
 - 1 NO. 22KW TWIN FAST CHARGER
 - ALL EVC UNITS TO BE PROVIDED WITH PROTECTIVE HOOPS/BARRIERS.
 - FINAL SETTING OUT OF EVC UNITS TO BE AS PER THE LANDSCAPE ARCHITECTS REQUIREMENTS.



03/09/24	PRELIMINARY ISSUE	P1	PC
Date	Description	Rev	By

Revision Description

Date	Description	Rev	By

hulley & kirkwood
 consulting engineers
 London Office
 Castle House Horizon Centre
 28-38 Upper High Street
 Epsom
 Surrey
 KT17 4RS
 Tel No: 01372 747 047
 E: hk.london@hulley.co.uk

...Making Buildings Work

Project:
NORTHWOOD & PINNER HEALTH CENTRE P23

Drawing Title:
EXTERNAL SERVICES LAYOUT
SHEET 1 OF 3
NORTH

Drawing Number:
41935(60)902

Revision: P1
Date: 03/07/2024
Scale: 1:100
Drawn By: PC
CAD Dwg File: 41935(60)902.dwg
Arch. Base Dwg:

Issue Status:
PRELIMINARY