

550 Bath Road

Customer Investment Proposal



Heathrow

evander

Customer Investment Proposal

Version: 28/03/2025
Address: 550 Bath Road
Postcode: UB7 0EE

Evander Ref: HO4221168
Case Ref: 00277566



Contents

- Part 1 Glazing Works
 - Part 2 Ventilation Works
 - Part 3 Loft Insulation Works
 - Part 4 Health & Safety Requirements and Associated Works
 - Part 5 Elevation Photos
 - Part 6 Floorplan
-

Thank you

Thank you for engaging with Heathrow and Evander on the Noise Insulation Scheme.

We recently completed an assessment of your home to determine the most suitable measures to reduce the noise levels within your property.

The outcome of that assessment is that the following works have been identified as eligible within the programme.

Considerations

Locations 4, 6, 7, 10, 12, 13, 21, 23, and 24 have not been included in the scheme. Locations 6, 7, 10, 12, 23, and 24 are windows that were not listed in your statement of needs. Location 13 is a door leading to the boiler room, which is also outside the scope of the scheme. Locations 4 and 21 are timber fire doors, and as fire doors are not covered under the scheme, they have likewise been excluded.

Part 1: Glazing - Windows



Location: 1	Bed 1	Item: Timber Bespoke	Window	Facade: A
Existing Product		Approved Product		
				
Images are for reference only and final product may differ from the image shown				

Lintel Check Required: No

Product Specifications

- Bespoke timber frames to closely match existing frame design
- Timber - White Finish RAL 9016 - Internally and Externally
- White Handle(s)
- Clear Glass - Optiphon Pilkington Clear Safety Glass With Astragal Bars

Part 1: Glazing - Windows

Location: 2	Bed 2	Item: Timber Bespoke	Window	Facade: A
Existing Product		Approved Product		
				

Images are for reference only and final product may differ from the image shown

Lintel Check Required: No

Product Specifications

- Bespoke timber frames to closely match existing frame design
- Timber - White Finish RAL 9016 - Internally and Externally
- White Handle(s)
- Clear Glass - Optiphon Pilkington Clear Safety Glass With Astragal Bars

Part 1: Glazing - Windows

Location: 3	Bed 7	Item: Timber Bespoke	Window	Facade: A
Existing Product		Approved Product		
				

Images are for reference only and final product may differ from the image shown

Lintel Check Required: No

Product Specifications

- Bespoke timber frames to closely match existing frame design
- Timber - White Finish RAL 9016 - Internally and Externally
- White Handle(s)
- Clear Glass - Optiphon Pilkington Clear Safety Glass With Astragal Bars

Part 1: Glazing - Windows

Location: 5	Bed 8	Item: Timber Bespoke	Window	Facade: A
Existing Product		Approved Product		
				

Images are for reference only and final product may differ from the image shown

Lintel Check Required: No

Product Specifications

- Bespoke timber frames to closely match existing frame design
- Timber - White Finish RAL 9016 - Internally and Externally
- White Handle(s)
- Clear Glass - Optiphon Pilkington Clear Safety Glass With Astragal Bars

Part 1: Glazing - Windows

Location: 8	Bed 4	Item: Timber Bespoke	Window	Facade: B
Existing Product		Approved Product		
				

Images are for reference only and final product may differ from the image shown

Lintel Check Required: No

Product Specifications

- Bespoke timber frames to closely match existing frame design
- Timber - White Finish RAL 9016 - Internally and Externally
- Chrome Handle(s)
- Clear Glass - Optiphon Pilkington Clear Safety Glass With Astragal Bars

Part 1: Glazing - Windows



Location: 11	Bathroom 1	Item: Timber Bespoke	Window	Facade: B
Existing Product		Approved Product		
				
Images are for reference only and final product may differ from the image shown				

Lintel Check Required: No

Product Specifications

- Bespoke timber frames to closely match existing frame design
- Timber - White Finish RAL 9016 - Internally and Externally
- White Handle(s)
- Stippolyte Textured Glass - Optiphon Pilkington Obscured Safety Glass

Part 1: Glazing - Windows

Location: 14	Bed 1	Item: Timber Bespoke	Window	Facade: C
Existing Product		Approved Product		
				

Images are for reference only and final product may differ from the image shown

Disclaimer: Lintel Installation Required: Yes

A lintel installation will take place prior to your window replacement

Product Specifications

- Bespoke timber frames to closely match existing frame design
- Timber - White Finish RAL 9016 - Internally and Externally
- Chrome Handle(s)
- Clear Glass - Optiphon Pilkington Clear Safety Glass With Astragal Bars

Part 1: Glazing - Windows

Location: 15	Bed 3	Item: Timber Bespoke	Window	Facade: C
Existing Product		Approved Product		
				
Images are for reference only and final product may differ from the image shown				

Lintel Check Required: No

Product Specifications

- Bespoke timber frames to closely match existing frame design
- Timber - White Finish RAL 9016 - Internally and Externally
- Chrome Handle(s)
- Clear Glass - Optiphon Pilkington Clear Safety Glass With Astragal Bars

Part 1: Glazing - Windows

Location: 16	Bed 9	Item: Timber Bespoke	Window	Facade: C
Existing Product		Approved Product		
				

Images are for reference only and final product may differ from the image shown

Lintel Check Required: No

Product Specifications

- Bespoke timber frames to closely match existing frame design
- Timber - White Finish RAL 9016 - Internally and Externally
- Chrome Handle(s)
- Clear Glass - Optiphon Pilkington Clear Safety Glass With Astragal Bars

Part 1: Glazing - Windows

Location: 18	Bathroom 2	Item: Timber Bespoke	Window	Facade: D
Existing Product		Approved Product		
				

Images are for reference only and final product may differ from the image shown

Lintel Check Required: No

Product Specifications

- Bespoke timber frames to closely match existing frame design
- Timber - White Finish RAL 9016 - Internally and Externally
- White Handle(s)
- Satin Obscure Glass - Optiphon Pilkington Obscured Safety Glass With Astragal Bars

Part 1: Glazing - Windows

Location: 19	Bed 6	Item: Timber Bespoke	Window	Facade: D
Existing Product		Approved Product		
				

Images are for reference only and final product may differ from the image shown

Lintel Check Required: No

Product Specifications

- Bespoke timber frames to closely match existing frame design
- Timber - White Finish RAL 9016 - Internally and Externally
- White Handle(s)
- Clear Glass - Optiphon Pilkington Clear Safety Glass With Astragal Bars

Part 1: Glazing - Windows

Location: 20	Bed 10	Item: Timber Bespoke	Window	Facade: D
Existing Product		Approved Product		
				

Images are for reference only and final product may differ from the image shown

Disclaimer: Lintel Installation Required: Yes

A lintel installation will take place prior to your window replacement

Final window design to match existing

Product Specifications

- Bespoke timber frames to closely match existing frame design
- Timber - White Finish RAL 9016 - Internally and Externally
- Chrome Handle(s)
- Clear Glass - Optiphon Pilkington Clear Safety Glass

Part 1: Glazing - Windows

Location: 22	Bed 11	Item: Timber Bespoke	Window	Facade: D
Existing Product		Approved Product		
				

Images are for reference only and final product may differ from the image shown

Disclaimer: Lintel Installation Required: Yes



A lintel installation will take place prior to your window replacement

Final window design to match existing

Product Specifications

- Bespoke timber frames to closely match existing frame design
- Timber - White Finish RAL 9016 - Internally and Externally
- Chrome Handle(s)
- Clear Glass - Optiphon Pilkington Clear Safety Glass

Part 1: Glazing - Doors

Location: 9	Bed 8	Item: Timber Bespoke	Door	Facade: B
Existing Product		Approved Product		
				
Images are for reference only and final product may differ from the image shown				

Lintel Check Required: No

Product Specifications

- Bespoke timber frames to closely match existing frame design
- Timber Fully Glazed Slab - Signal Blue Finish RAL 5005, Externally - White Internally
- Timber Frame - White Finish RAL 9016 - Internally and Externally
- Door Details
- Black Lever/Lever Handle - White Hinges x3
- Yale 1* Key/Key Cylinder - With 3 Keys As Standard
- Open In - Hung On The Left - Viewed Externally
- Glass Details
- Clear Glass - Optiphon Pilkington Clear Safety Glass With Astragal Bars

Part 1: Glazing - Doors

Location: 17	Bed 7	Item: Timber Bespoke	Door & 1x Window	Facade: C
Existing Product		Approved Product		
				
Images are for reference only and final product may differ from the image shown				

Lintel Check Required: No

Product Specifications

- Bespoke timber frames to closely match existing frame design
- Timber - White Finish RAL 9016 - Internally and Externally
- Door Details
- Chrome Lever/Lever Handle - White Hinges x6
- Yale 1* Key/Key Cylinder - With 3 Keys As Standard
- Open Out - Master On The Left - Viewed Externally
- Glass Details
- Clear Glass - Optiphon Pilkington Clear Safety Glass With Astragal Bars

Part 2: Ventilation Works

Wall Ventilation

To Supply and Install	Siegenia Passive Aerotube:	Quantity: 12
-----------------------	----------------------------	--------------

These vents will be installed in the following rooms:

Siegenia Passive Aerotube:

- Bed 1
- Bed 2
- Bed 3
- Bed 4
- Bathroom 1
- Bed 6
- Bed 7
- Bed 8
- Bed 9
- Bed 10
- Bed 11
- Bathroom 2

Through Wall Vent Locations





**Ventilation Location for Bedroom 9
to be confirmed**

Part 3: Insulation Works

Loft Insulation

To Supply and Install Loft Insulation to Property to Comply with Scheme Conditions

To install a total of 78 Square meters of acoustic loft insulation within the loft space. Please ensure the loft space is clear on day of installation

Part 4: Health & Safety Requirements and Associated Works

Building Works

Type of Work	Description of Works	Quantity
Lintel Installation	Lintel Installaton Required To Locations 14, 20 & 22	3

Access Equipment

To Supply and Install Access Equipment to Meet Health & Safety Requirements

Scaffolding will be erected to apertures 1, 2, 8, 14, 15, 18 & 19 in order to meet Health & Safety Requirements

Part 5: Elevation Photos

Numbers on elevation photos reference aperture numbers above.

Façade A



Façade B



Part 5: Elevation Photos

Numbers on elevation photos reference aperture numbers above.

Façade C



Façade D

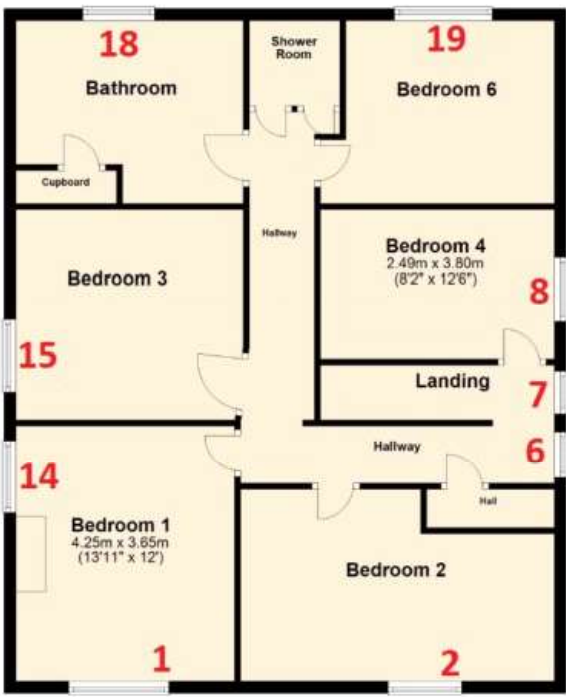


Part 6: Floorplan

Numbers on floorplan reference aperture numbers above.



Ground Floor Facade A Front



First Floor Facade A Front