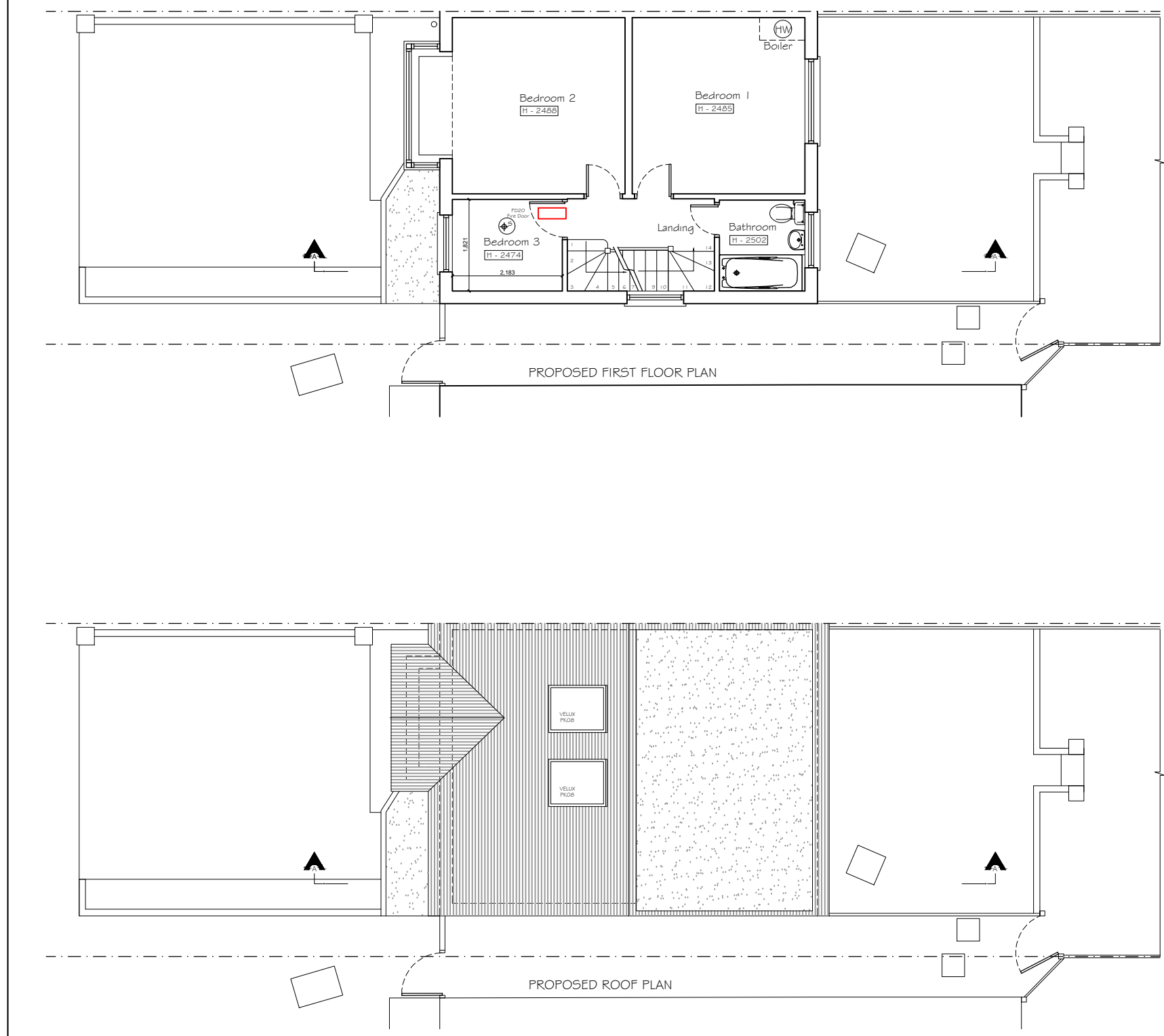


The architectural drawings include the following details:

- PROPOSED REAR ELEVATION:** Shows a two-story rear view with a gabled roof. The upper floor has two windows. The lower floor has a door and a large window. A small porch is visible on the left. Dimensions include a width of 3.00m and a height of 3.00m.
- PROPOSED SIDE ELEVATION 01:** Shows a side view of the house with a gabled roof. The upper floor has a window. The lower floor has a door and a window. A small porch is visible on the left. Dimensions include a width of 3.00m and a height of 3.00m.
- PROPOSED SIDE ELEVATION 02:** Shows another side view of the house with a gabled roof. The upper floor has a window. The lower floor has a door and a window. A small porch is visible on the left. Dimensions include a width of 3.00m and a height of 3.00m.



Dormer Volume

$$= (A \times B / 2) \times C$$

$$= (3.496 \times 2.550 / 2) \times 5.581$$

$$= 24.88\text{m}^3$$

Hip To Gable Volume

$$= (D \times E / 2) \times F / 3$$

$$= (7.962 \times 2.774 / 2) \times 3.803 / 3$$

$$= 14.00\text{m}^3$$

DORMER VOLUME + HIP TO GABLE VOLUME

$$= 24.88 + 14.00$$

$$= 38.88\text{m}^3$$

0m .5m 1m 2m 3m 4m 5m  
SCALE BAR IN METERS

Storage  
Bedroom 3  
Landing  
Bathroom  
Hall  
Kitchen

1,400  
1,000  
1,750mm  
2,100  
510

All new materials to match existing. All new side windows to be obscure-glazed and fixed shut up to 1,7m above internal floor level

All rooflights not to project by more than 150mm above the roofslope

PROPOSED SECTION A-A

2.63m  
x 1.15m =  
3.024m<sup>2</sup>  
minus the  
shaded  
triangle area  
of 0.1m<sup>2</sup>  
= 2.924m<sup>2</sup>

Living  
H - 2459  
Dining  
H - 2465  
Kitchen  
H - 2475  
Hall  
M.H.

PROPOSED GROUND FLOOR PLAN

CHIMNEY BREAST TO BE REMOVED

Bedroom  
H - 2100  
Bathroom  
H - 2100  
Storage  
1.5m<sup>2</sup> BEDROOM  
M DWARF WALL

PROPOSED LOFT PLAN

This drawing is not to be scaled. Only figured dimensions to be taken. Any discrepancies to be reported to the Studio 136 Architects Ltd prior to setting out or ordering of any materials

Drawing Number	Rev
ST_OCT21_89 DEN_002	D