



Rear of Existing Former Puclic House

Halo System 10 Casement Window

The System 10 Casement Window offers a clean, contemporary appearance with a modern bevelled design.

U-Values with Triple Glazing as low as: 0.83 W/m²K

U-Values with Double Glazing as low as: 1.2 W/m²K

Available in a large assortment of colours and woodgrain options from the Variations range.

Technical Drawing

Features and Benefits

- Clean, bevelled design**
Featuring a simple bevelled edge for a crisp, understated look—well-suited to both new-build and replacement markets.
- Ease of fabrication & installation**
Compatible with a range of ancillaries and reinforcement options for efficient production and fitting.
- Robust performance**
Built to meet high standards of strength, weather resistance, and security.
- Flexible configuration**
Can be integrated with Halo Rustique allowing for more customised designs.

Test Results

Window type: Top hung reinforced		Window type: Fixed light part reinforced	
Max sash sizes (wxh)	1400mm x 1400mm	Max sash sizes (wxh)	3000mm x 3000mm
Air permeability	Class 3	Air permeability	Class 4
Water tightness	Class 7A	Water tightness	Class E750
Resistance to wind	A3	Resistance to wind	A4
Exposure category	1200	Exposure category	1600

Window type: Side hung reinforced	
Max sash sizes (wxh)	800mm x 1550mm
Air permeability	Class 4
Water tightness	Class 8A
Resistance to wind	A4
Exposure category	1600

Maximum sash sizes
 Top hung: 1400mm (w) x 1400mm (h)
 Side hung: 800mm (w) x 1550mm (h)
 Fixed light: 3000mm (w) x 3000mm (h)

Outer frames
 56mm, 72mm and 84mm outer frames

Mullions
 70mm or 95mm mullions

Sash
 75mm casement sash

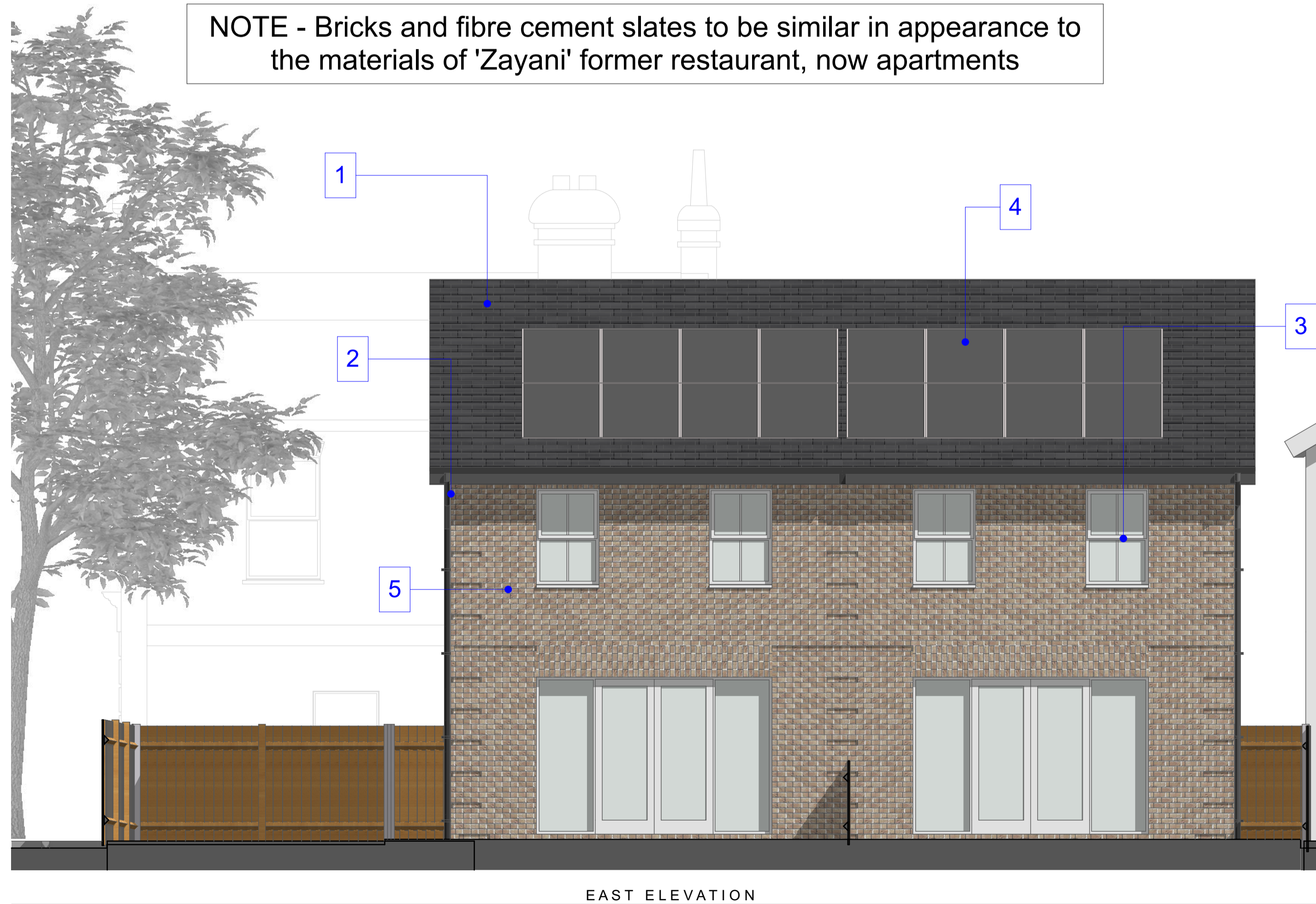
Glazing beads

• 24mm sculptured	• 32mm sculptured
• 24mm bevelled	• 32mm bevelled
• 28mm sculptured	• 36mm bevelled
• 28mm bevelled	• 40mm bevelled

Ancillaries
 Frame extensions, thermal inserts, cills and weathering trims
 Range of coupling options
 Range of bay pole options

3 System 10 Casement Windows and External Doors - White

NOTE - Bricks and fibre cement slates to be similar in appearance to the materials of 'Zayani' former restaurant, now apartments



1 Marley Modern Roof Tile Smooth Grey



2 Grey uPVC Rainwater Goods and Soffits



4 In-Roof Photovoltaic Panels



5 Harewood Blend Sample Panel