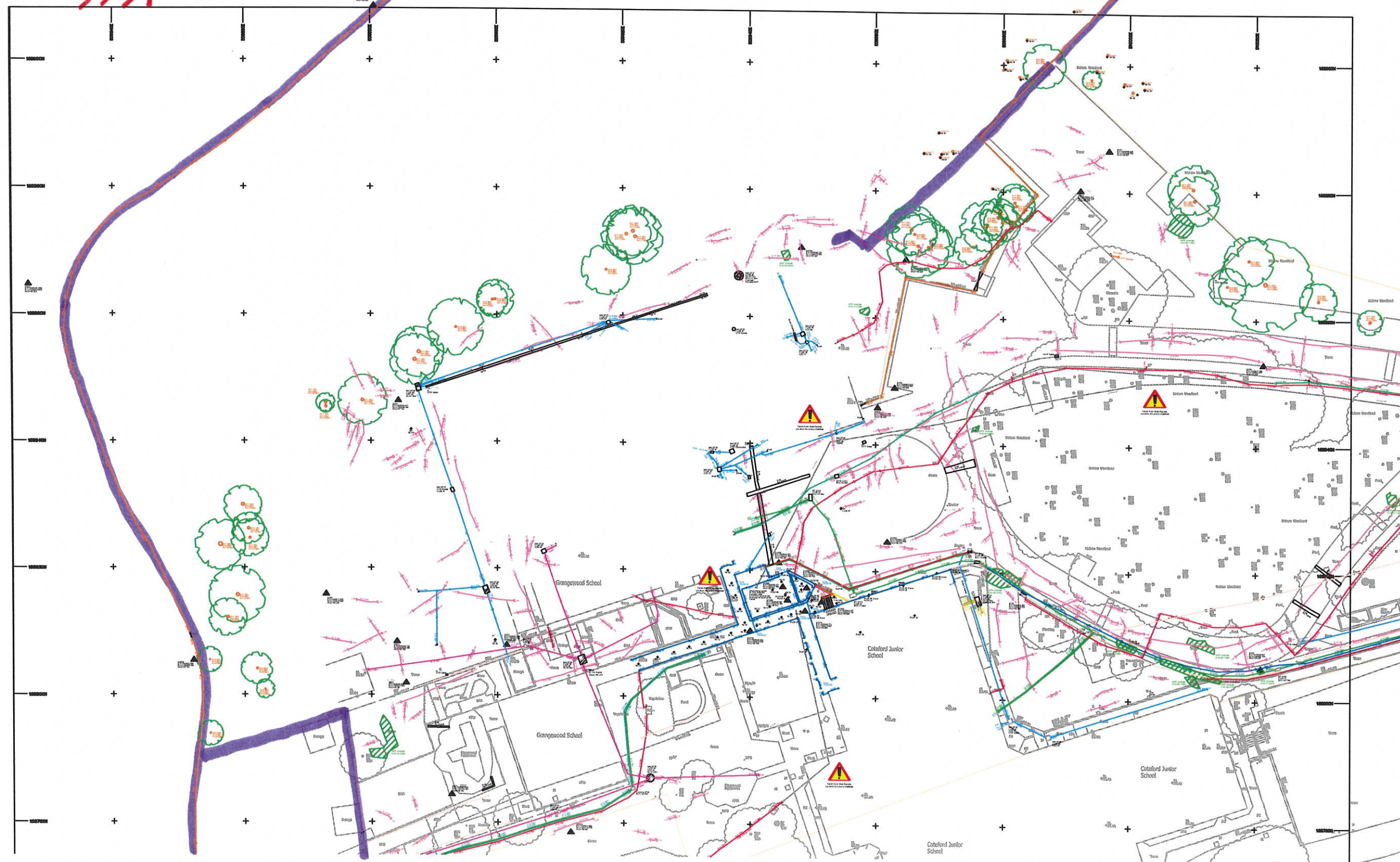


Proposed 2.4m Axiom
weld mesh fence

5551

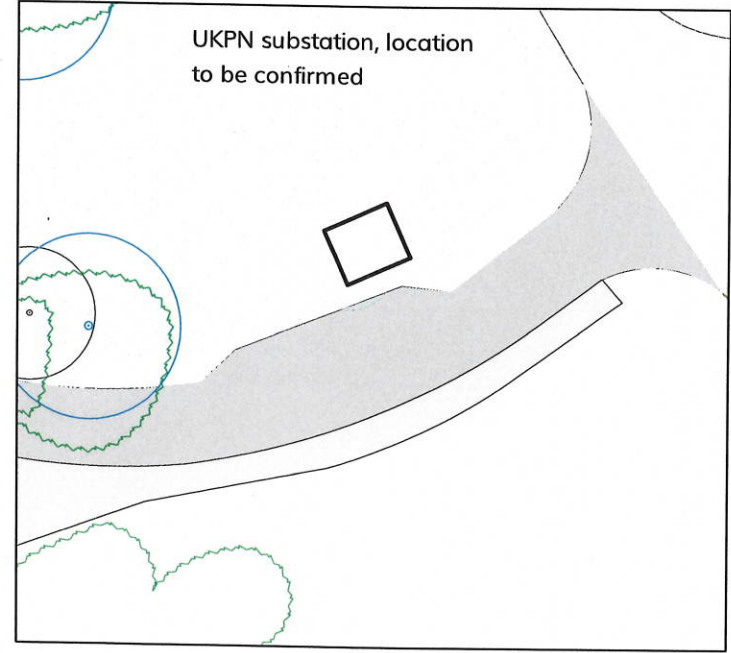


No.	Date	Appr	Revision Notes
Note: All Dimensions must be checked on site and not scaled from this drawing. All cross references are to the latest revision of the relevant drawing or specification being referenced.			
© Copyright wynne-williams associates landscape architects & arboricultural consultants tel: 01376 573050 web: w-w.co.uk			
Scale/North Point			
Client			XXXX
Job Title			XXXX
Drawing Title			XXXX
Issue CONTRACTORS PROPOSALS			
Scale XXXX			
Drawn XXXX		Checked XXXX	
Project ID XXXX		Date xx/xx/xxxx	
Dwg XXXX_XXX_XXX			Rev XXX



- Proposed secure fence line 2.4m high
 - Existing metal palisade fencing
 - Vehicular asphalt
 - Parking spaces
 - Pedestrian safe walking route
 - Drop kerb
 - Raised road kerb
 - Gravel margins to sprinkler tank compound and garage
 - Existing soft landscape
 - Proposed trees
 - Electric Vehicle Charging Point
 - Retained trees with canopy and RPA
 - Existing levels
 - Proposed levels
 - School entrance
 - Surface gradients
 - 107 Standard parking bays
 - 3 Accessible bays
 - 3 school minibus parking bays
 - 8 minibus drop off bays
 - 9 minibus waiting
 - Powered 2 wheeler parking
 - Minibus drop off bays
 - Cycle parking - 10 spaces
 - Sprinkler Tank
 - Bin Store - 10 Eurobins
- Note: Levels and drainage in car park to be coordinated with drainage engineers drawings
 Note: Dropped kerbs at crossing points and accessible bays
 Note: Hazard paving at crossing points

P. 03	19/10/22	KL	Updated layouts and levels
P. 02	13/10/22	KL	Updated layout
No.	Date	Appr	Revision Notes
Note: All Dimensions must be checked on site and not scaled from this drawing. All cross references are to the latest revision of the relevant drawing or specification being referenced			
 landscape architects & urbanistic consultants tel: 01376 573050 web: ww-wa.co.uk			
Scale/North Point			
 0 10 15 20 25 M			
Client			
Kier Construction			
Job Title			
Pinn River School			
Drawing Title			
Car Park Layout			
Issue			
PLANNING			
Scale			
1:250@A1			
Drawn		Checked	
IN		JL	
Project ID		Date	
2181		12/09/2022	
Dwg		Status	Rev
FS0728-WWA-ZZ-ZZ-DR-L-0113		S4	P03



Existing fence retained

Proposed 2.4m high Axiam weldmesh fence

