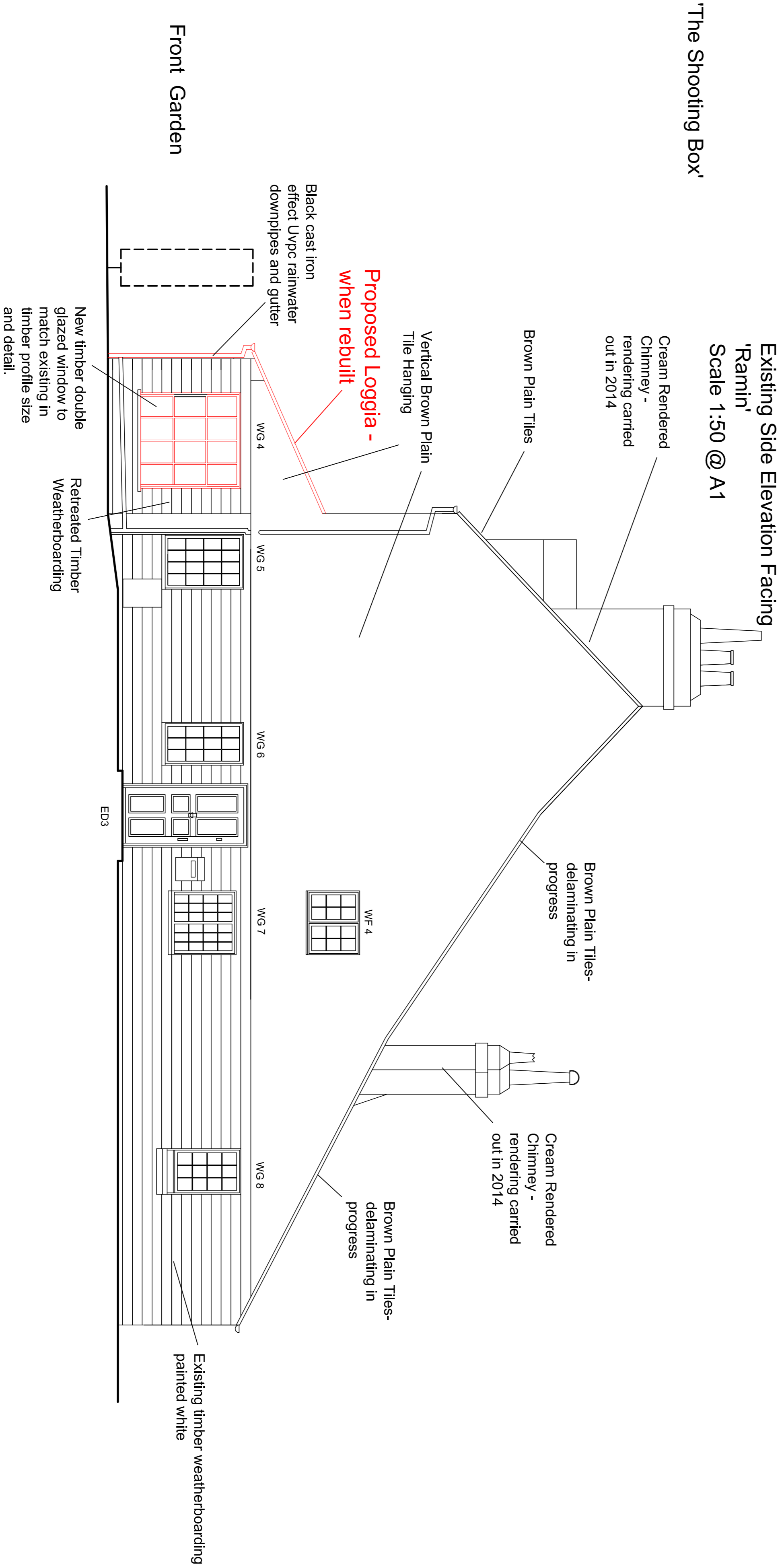
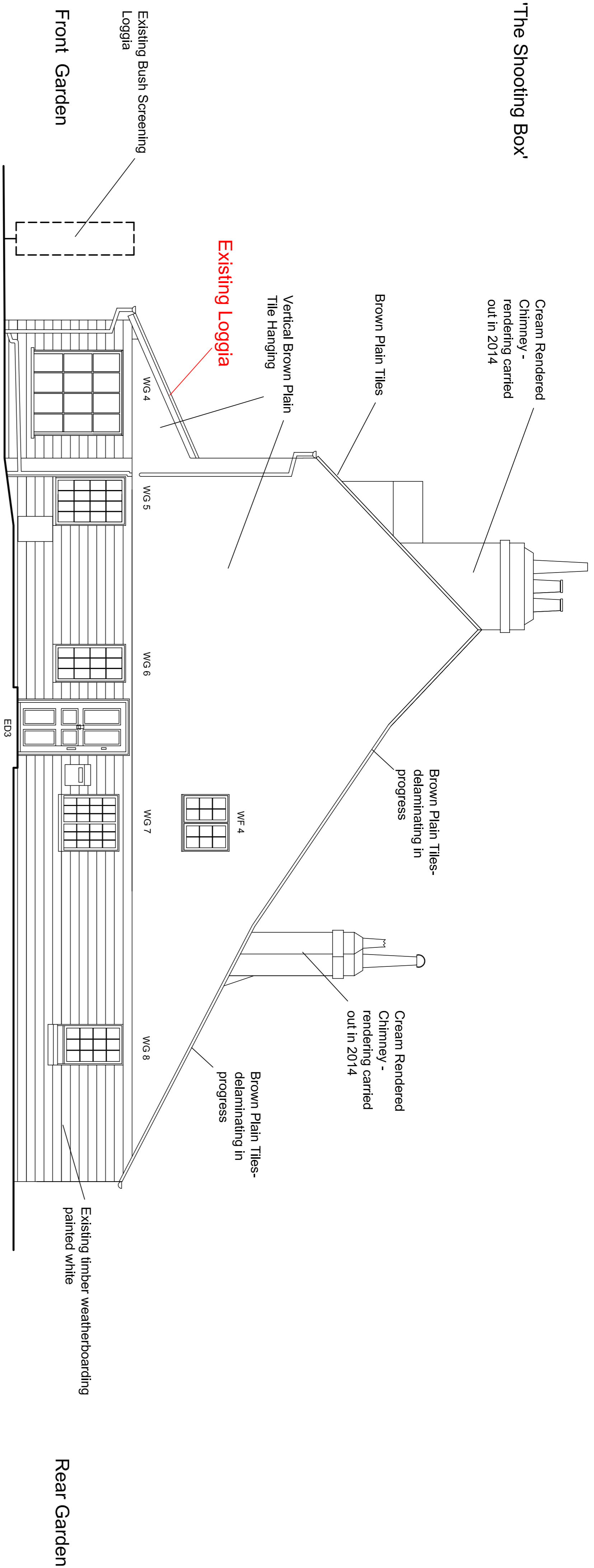
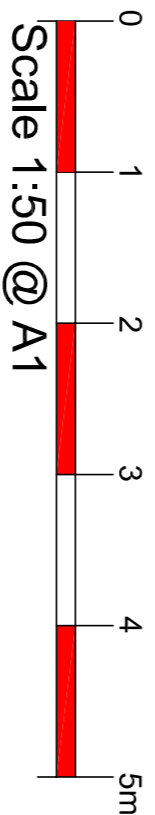


GENERAL NOTES

DRAWING CAN BE SCALED FOR PLANNING SUBMISSION PURPOSES ONLY BUT IF IN ANY DOUBT ABOUT A DIMENSION OR ANY OF THE DRAWN INFORMATION PLEASE ASK CDRB ARCHITECTS LTD IMMEDIATELY.



PLANNING SUBMISSION



rev	date	by	checked
<div><div><div>CDRB</div><div>CDRB architects ltd</div><div>9 Miller Court, Romford, Essex S10 1JD.</div></div><div><div>cdto architects ltd</div><div>9 Miller Court, Romford, Essex S10 1JD.</div></div></div>			
Job title			
Remodelling and Repair Works at 'The Old Shooting Box' High Road, Eastcote, Middlesex. HA5 2EY.			
drawing title			
Existing and Proposed Side Elevations Facing 'Ramlin'			
scale	drawn by	date	checked by
1:50 @ A1	cz	March 2023	CDRB
job no.	drawing no.	revision	
T2486	AL (P) 20	-	