

Discharge Information For Condition 3.
on Application Ref 20652/APP/2023/840

GENERAL NOTES

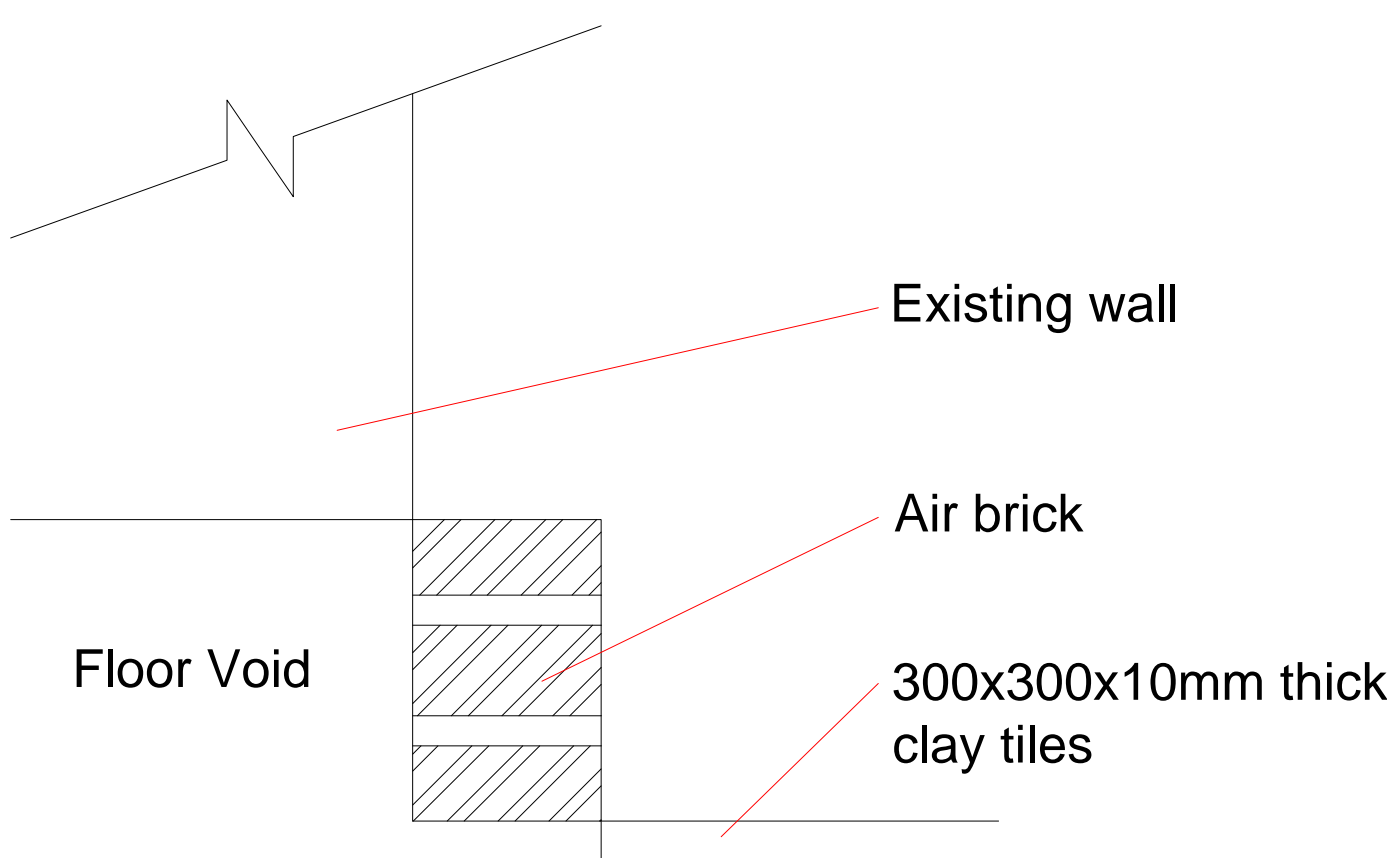
DRAWING CAN BE SCALED FOR PLANNING
SUBMISSION PURPOSES ONLY BUT IF IN
ANY DOUBT ABOUT A DIMENSION OR ANY
OF THE DRAWN INFORMATION PLEASE ASK
CDRB ARCHITECTS LTD.

Floor Tile Specification:

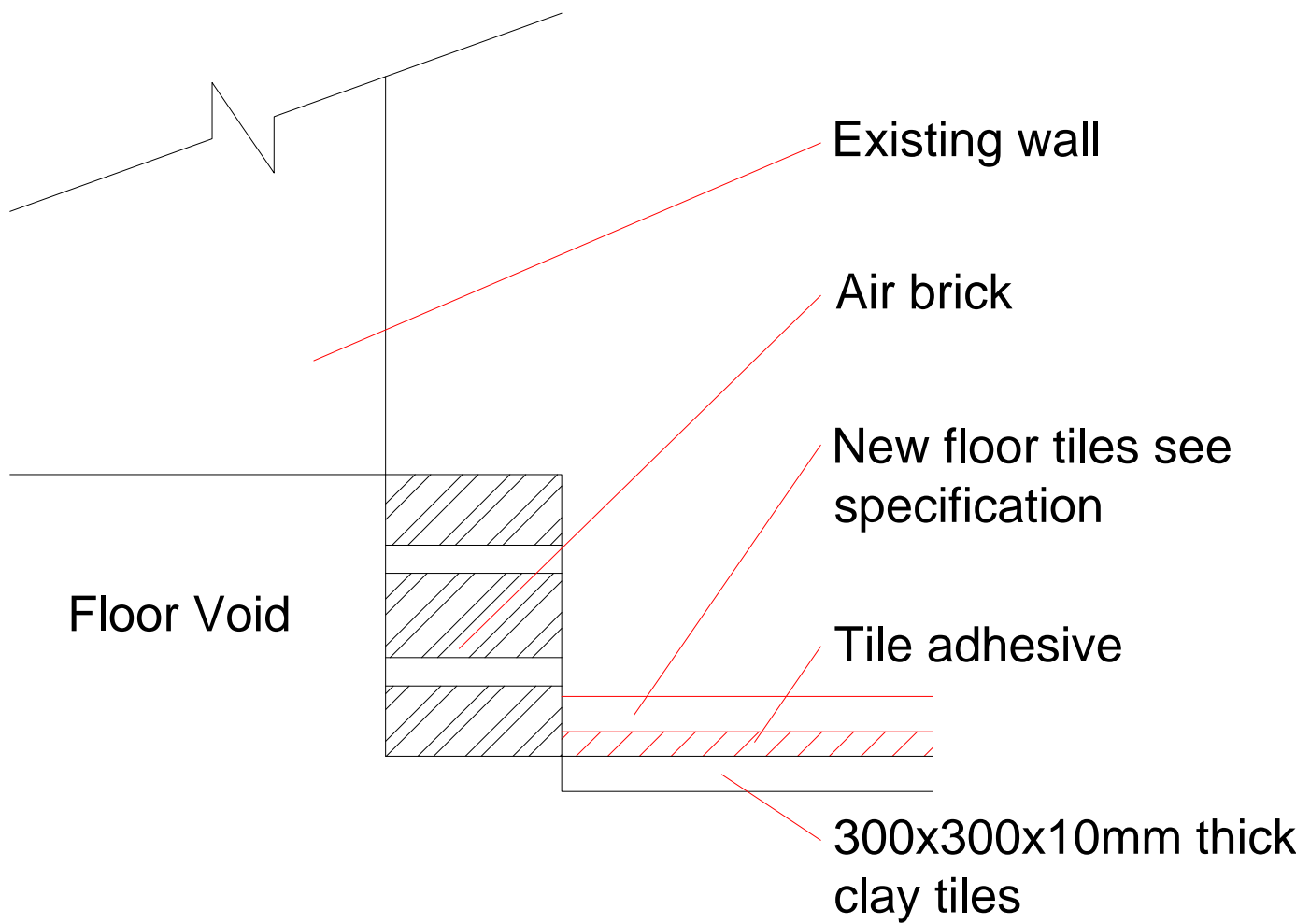
Material: Porcelain
Colour: Beige
Size: 1200 x 600 x 10 mm thick
Anti Slip Rating: P11
Matt Finish



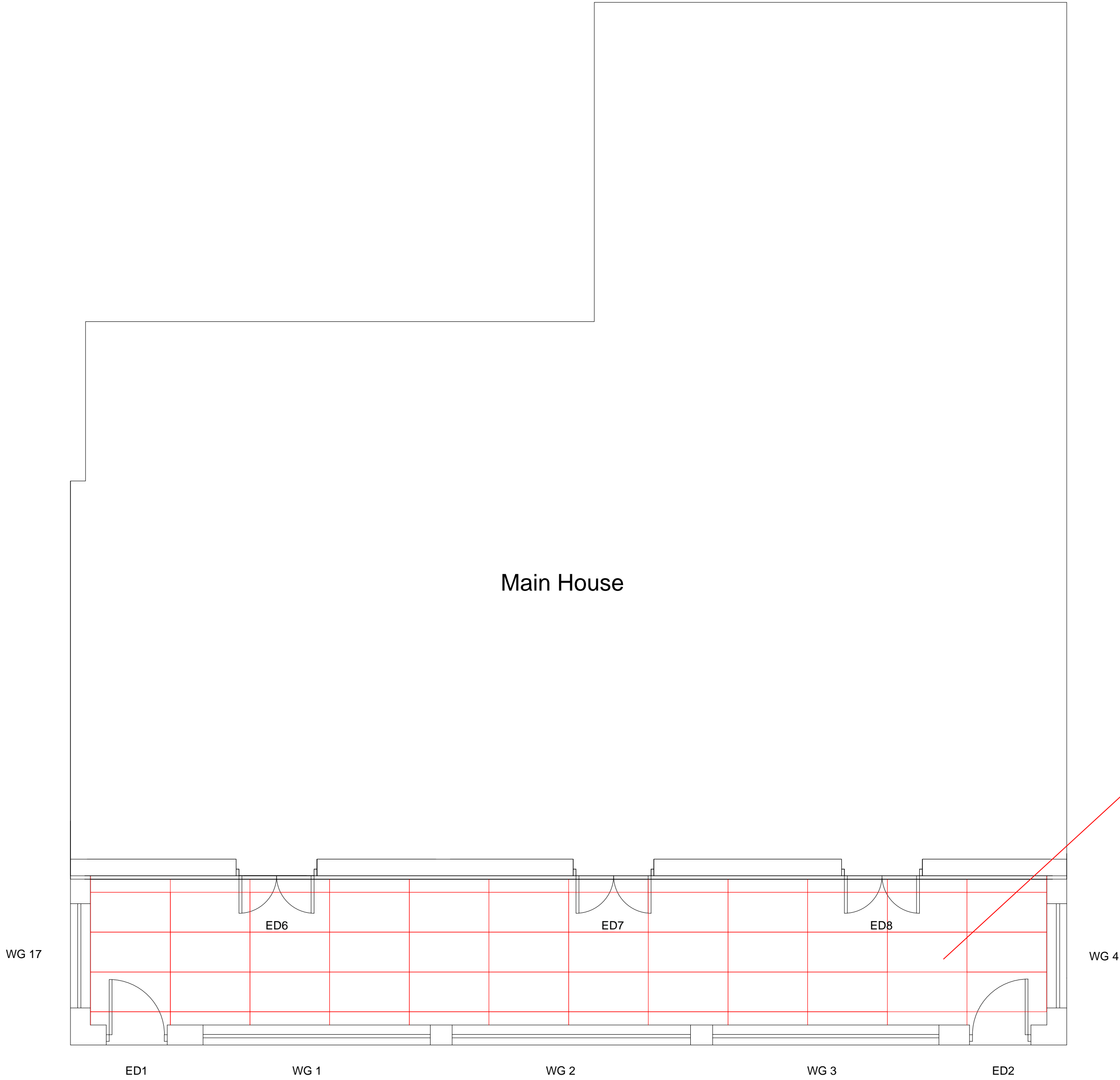
Photograph showing Floor Tile



Existing Threshold Detail Between Loggia
and House
Scale 1:50 @ A1

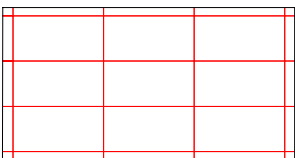


Proposed Threshold Detail Between Loggia
and House
Scale 1:50 @ A1



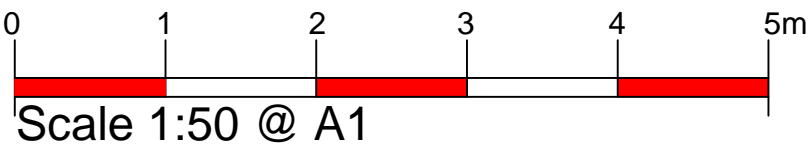
Proposed Loggia Floor Tiles
Scale 1:50 @ A1

Key to Floor Hatch



Indicates Floor Tiles
to Loggia

PLANNING SUBMISSION



revn	date	by	chkd
<div><div><div>CDRB</div><div>cdrb architects ltd 9 Millar Court, Station Road, Kendalworth, CV8 1JD.</div></div></div>			
<p>job title</p> <p>Discharge of Condition 3 on Application Ref: 20652/APP/2023/840 at 'The Old Shooting Box' High Road, Eastcote, Middlesex. HA5 2EY.</p>			
<p>drawing title</p> <p>Proposed Loggia Floor Tiles Condition 3 Discharge</p>			
scale	drawn by	date	checked by
1:50 @ A1	cf, ac	July 2023	CDRB
job no.	drawing no.	revision	
T2615	AL (DOC) 01	-	