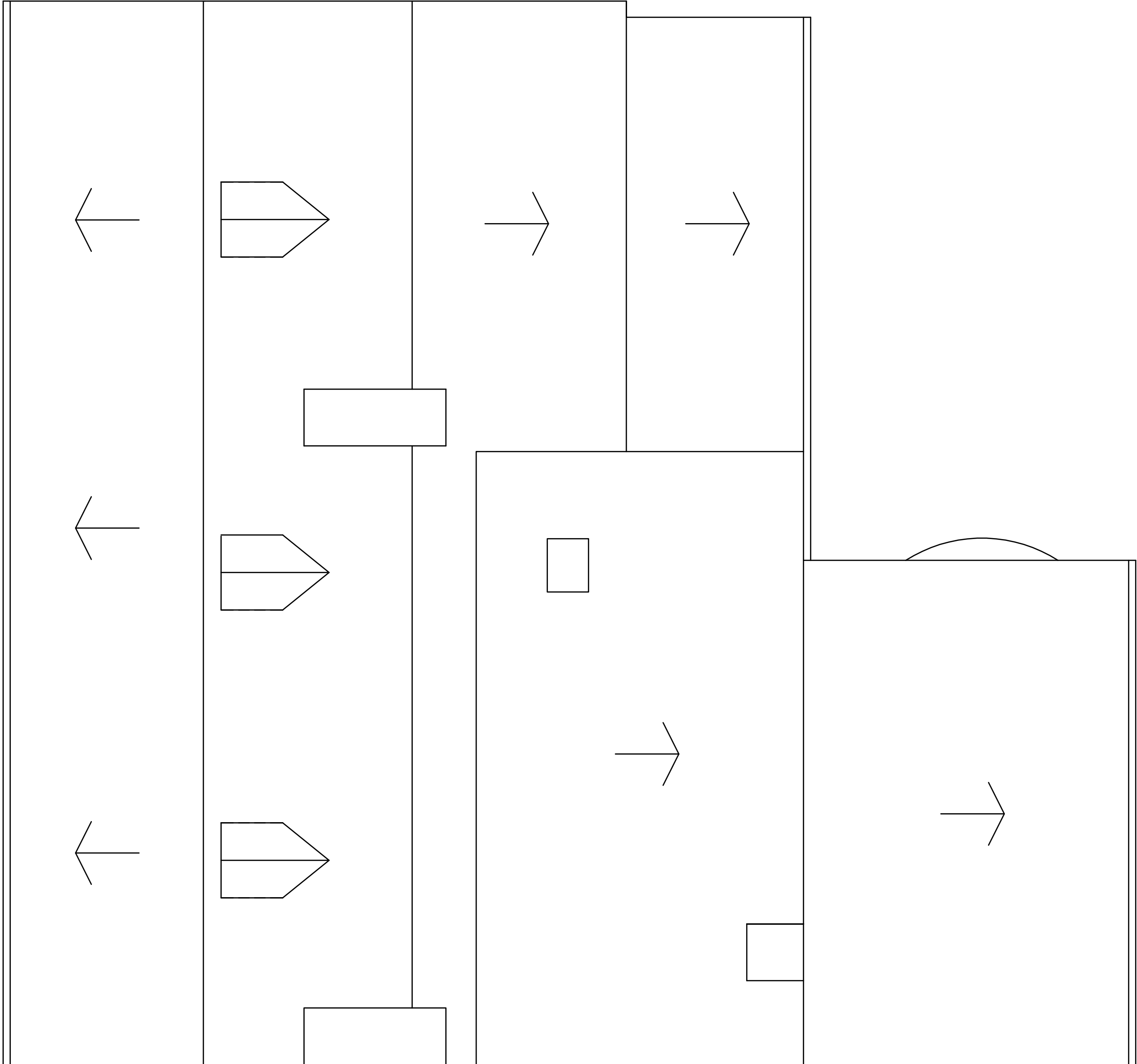


Discharge Information For Condition 4.
on Application Ref 20652/APP/2023/840

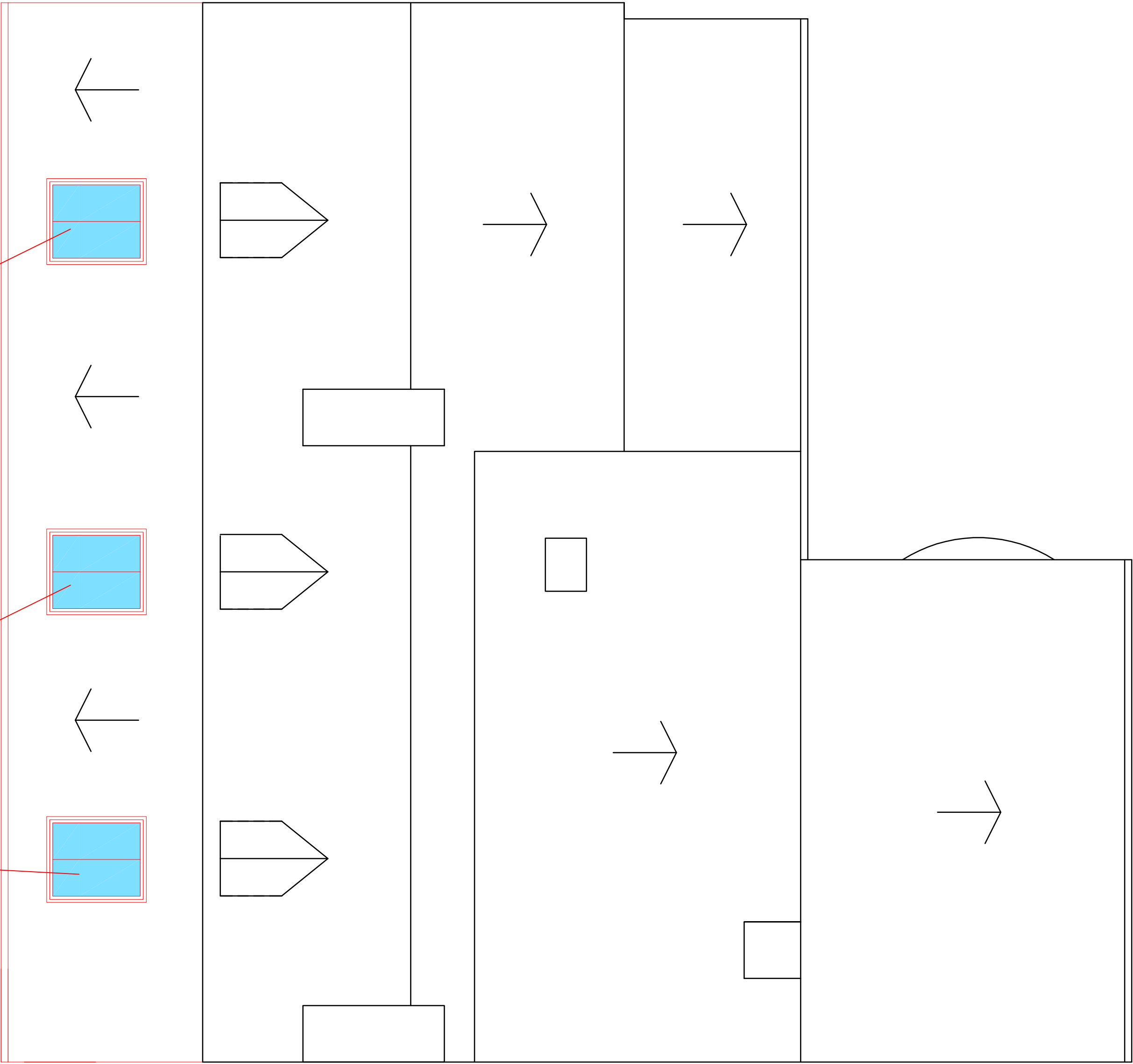
GENERAL NOTES
DRAWING CAN BE SCALED FOR PLANNING
SUBMISSION PURPOSES ONLY BUT IF IN
ANY DOUBT ABOUT A DIMENSION OR ANY
OF THE DRAWN INFORMATION PLEASE ASK
CDRB ARCHITECTS LTD IMMEDIATELY.

Rooflight Specification:

Make: The Roof Light Company
Material: 316L Stainless Steel
Internal Colour: White
External Colour: Black
Size: 1500mm x 1000mm wide
Glazing specification: Double glazed

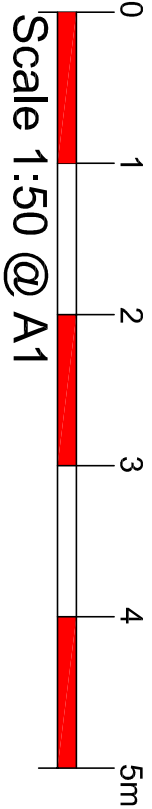


Existing Roof Plan
Scale 1:50 @ A1



Proposed Roof Plan
Scale 1:50 @ A1

PLANNING SUBMISSION



A		25.6.23	Drawing updated following email from Planner on 25.8.23.		CR	CDRB
rev	date			by	checked	
<div><div>CDRB</div><div>9 BARR COURT, ROCKHAMPTON, QNS 150.</div></div> <div>cdtb architects ltd</div>						
Discharge of Condition 4 on Application Ref: 20652/APP/2023/840 at 'The Old Shooting Box' High Road, Eastcote, Middlesex, HA5 2EY.						
drawing title						
Existing and Proposed Roof Plan						
Condition 4 Discharge						
scale	drawn by	date	checked by			
1:50 @ A1	ac	July 2023	CDRB			
jdb no.	drawing no.	revision				
72922	AL/DOO/01	A				