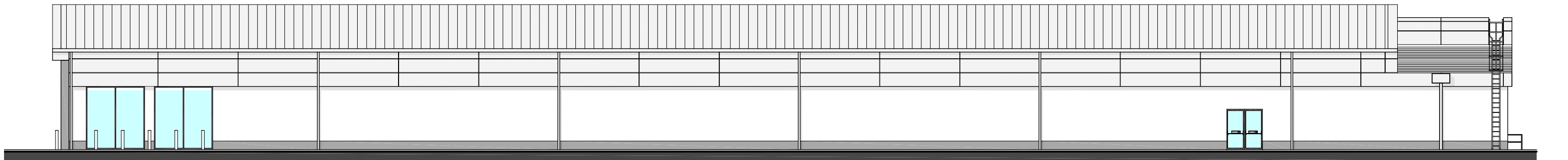
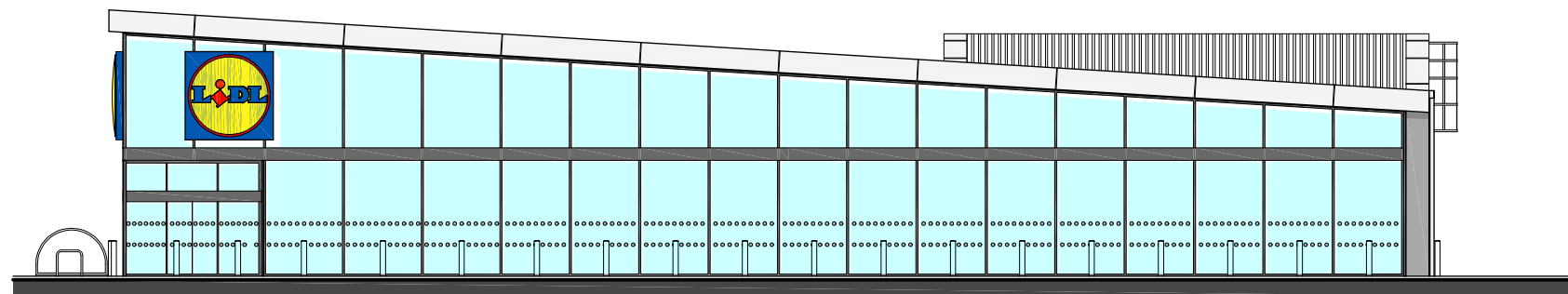


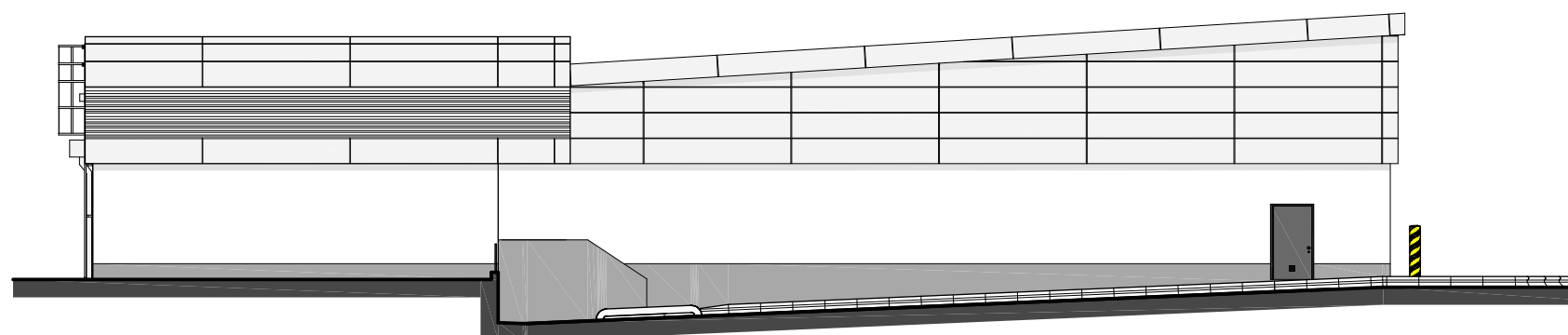
30.000
WEST ELEVATION



30.000
EAST ELEVATION



30.000
SOUTH ELEVATION



30.000
NORTH ELEVATION

PROPOSED MATERIALS

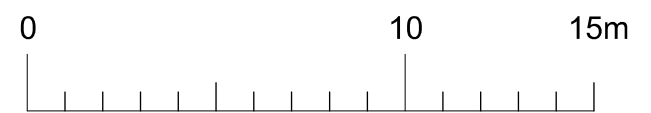
WALLS
20mm mineral render painted white RAL 9010 with low level plinth in grey RAL 7038.

Ash & Lacy Building Systems Freedom 1 rainscreen cladding with 4mm Alucobond in silver metallic finish RAL 9006.

ROOF
Standing seam aluminium sheet roofing in silver RAL 9006 finish

SHOPFRONT GLAZING, ENTRANCE / EXIT LOBBY AND WINDOWS
Powder coated aluminium framed, double glazed system in Graphite Grey, RAL 7024.

EXTERNAL DOORS
Steel external escape doors and sectional door for deliveries in Graphite Grey, RAL 7024.



& POOLE PATTLE chartered architects
TEL: 01473 230580 FAX 01473 231549 E-MAIL mail@pooleandpattle.co.uk
 5 OBSERVATION COURT 84 PRINCES STREET IPSWICH SUFFOLK IP1 1RY

Project	PROPOSED LIDL, CENTRAL AVENUE, HAYES	Date	MAR 2015	Scale	1:200 @ A3
Drawing	PROPOSED ELEVATIONS	3176	405	K	

© this drawing must not be reproduced in whole or part without written consent