

Proposed Fencing and Protection Details Scale 1:750



**Timber Knee Rail**  
Size: 0.43m high



**Armco Protective Barriers**  
**Location:** HGV parking spaces against vulnerable areas of elevations  
**Finish:** Galvanised Steel with end caps and fish tails where required  
**Armco Protective Barriers with Handrail**  
**Location:** Dock retaining walls  
**Finish:** Galvanised Steel  
**Note:** Handrail to be secured to top of dockwalls



**Paladin Fence & Gates**  
Size: 2.4m high  
Colour: PPC Black



**Medium Duty Bollards**  
**Location:** Internal areas  
**Range:** Brandsafe Impact Safe Medium Duty Protection Post  
**Finish:** Steel with Yellow polymer sleeve  
225mm diameter x 1500mm high



**Heavy Duty Bollards**  
**Location:** Level access doors  
Dock retaining walls  
**Range:** Brandsafe ImpactSafe Heavy Duty Bollard  
**Finish:** Steel with Black and Yellow polymer sleeve  
225mm diameter x 1500mm high



**Telescopic Bollards**  
**Location:** Car park  
Marshalls RT R8 (or similar approved)  
**Range:** PPC galvanised steel  
**Finish:** Black (RAL 9005)



**Illuminated Bollards**  
**Location:** Office Entrance protection  
Holophone Signature Bollard  
**Range:** Extent of lighting provision subject to M+E consultant's details.



**Entrance Bollards**  
**Location:** Externally to office area  
**Range:** Marshalls RS001 (or similar approved)  
Stainless steel Bollards to be fixed in place to substrate beneath finished surface, with block paving cut to suit to conceal fixings.



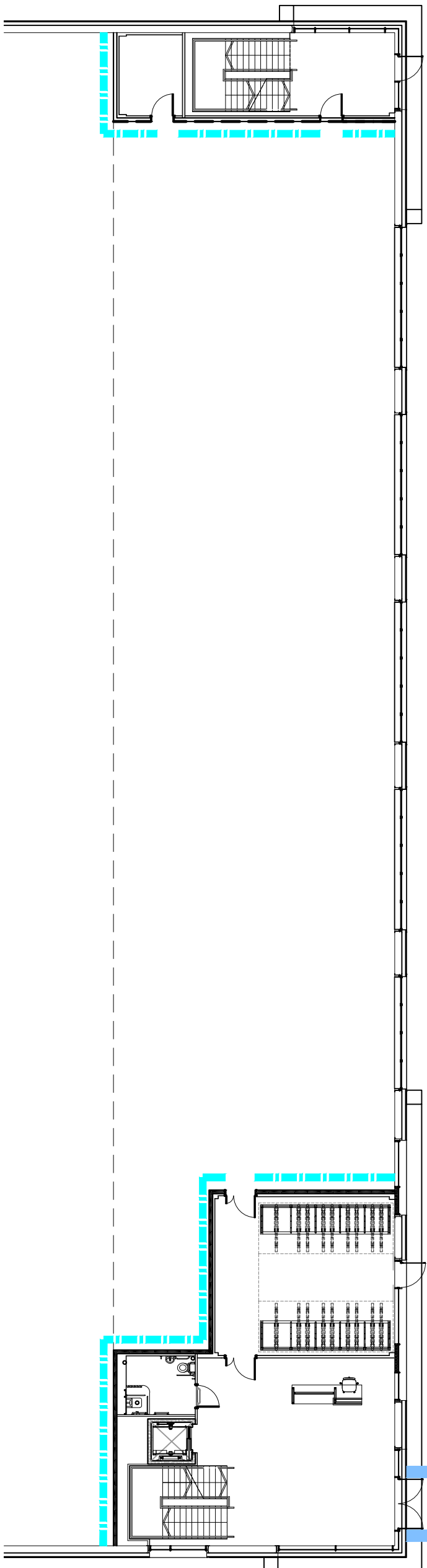
**HGV Wheelstops**  
**Location:** Lorry parking spaces directly in front of gravel margin.  
**Range:** Brandsafe WS-HGV Wheelstop  
**Finish:** Steel moulded from recycled truck tyres.



**EV Charging Post with Bollard Protection**  
**Location:** EV Charging spaces  
**Extent and type of protection to be confirmed by contractor. Refer to specification for EV post details.**



Extract A - Ground Floor Scale 1:200



**Door Barriers**

**Location:** Main entrances

**Finish:** Stainless steel  
**Note:** Barriers to be fixed in place to substrate beneath finished surface, with block paving cut to suit to conceal fixings.



**Armco Protective Barriers (Internal)**

**Location:** Around stairwells and office cores generally. Any additional protection required to suit internal pipe drops etc. to be determined during detailed design

**Range:** Brandsafe 760HR Safety Barrier with handrails where required  
**Finish:** Galvanised Steel



**Wheel Guides**

**Location:** Service yard

**Colour:** Yellow



**Door Barriers**

**Location:** Main entrances

**Finish:** Stainless steel  
**Note:** Barriers to be fixed in place to substrate beneath finished surface, with block paving cut to suit to conceal fixings.

E	Geometry of Hayes Road Entrance Adjusted.	jrh	AJL	28/09/23
D	Drawing updated to suit new site layout	TH	AJL	15/09/23
C	Drawing updated to suit new site layout	TH	AJL	31/03/23
B	Car parking arrangement amended - Entrance island and 6 larger spaces added	LBR	AJL	22/11/22
A	Initial Issue	jrh	AJL	01/12/21
rev	amendments	by	ckd	date

Bridge Retail Park, Hayes

Proposed Fencing and Protection Layout



**OXENWOOD**  
REAL ESTATE

**GRAFTONGATE**



Newark Beacon, Cafferata Way, Newark, Nottinghamshire NG24 2TN  
t. +44 (0)1636 653027 e. info@umcarcitects.com

Drawing Status:	Planning
Drawn / Checked:	jrh / AJL
Date:	01/12/2021
Scale:	As Noted A1
Drawing no:	Revision:
21048 P0009	E

**PLANNING**  
THIS DRAWING IS FOR PLANNING CONSIDERATION ONLY  
AND SHOULD NOT BE USED FOR ANY OTHER PURPOSE