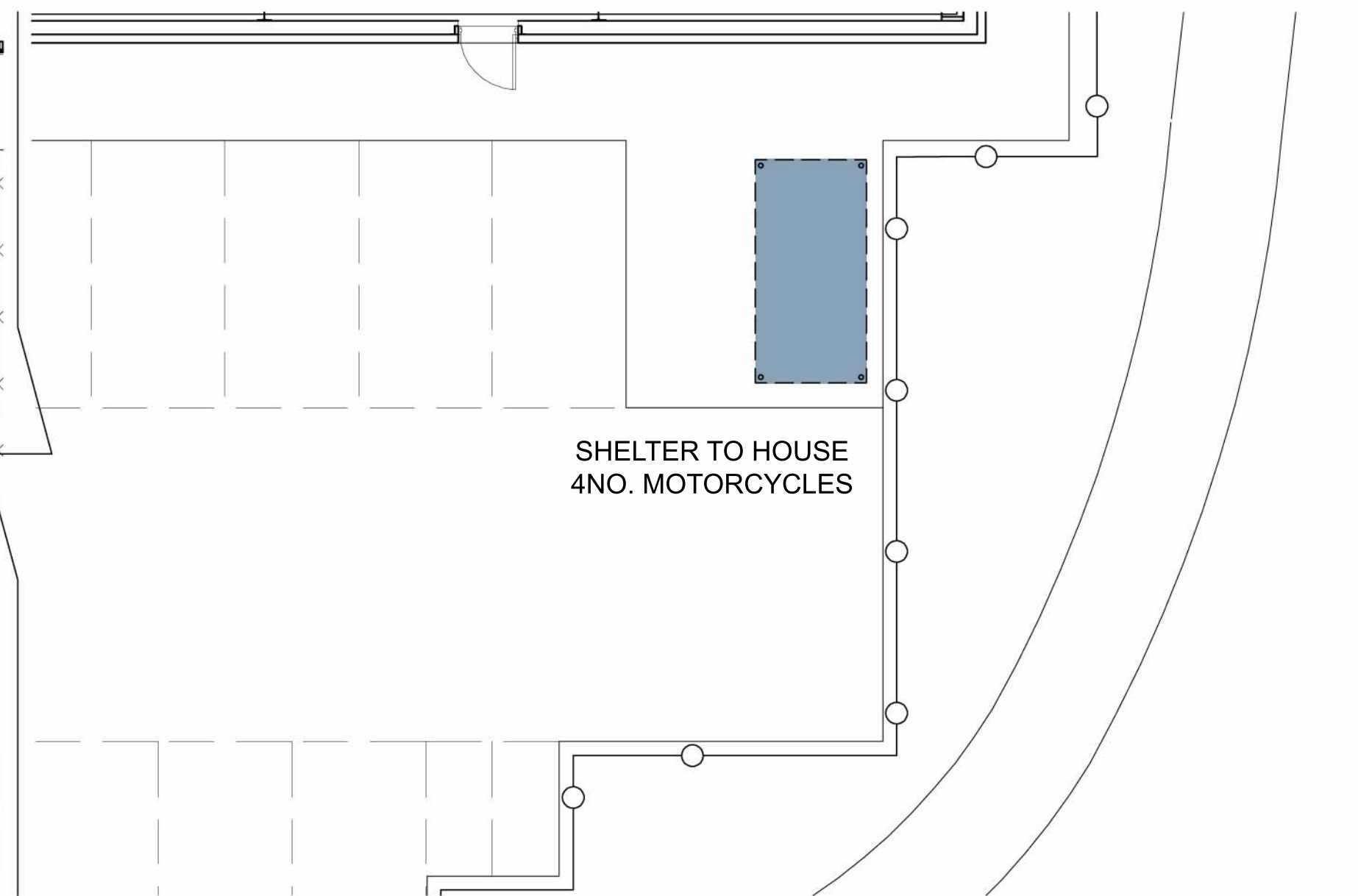
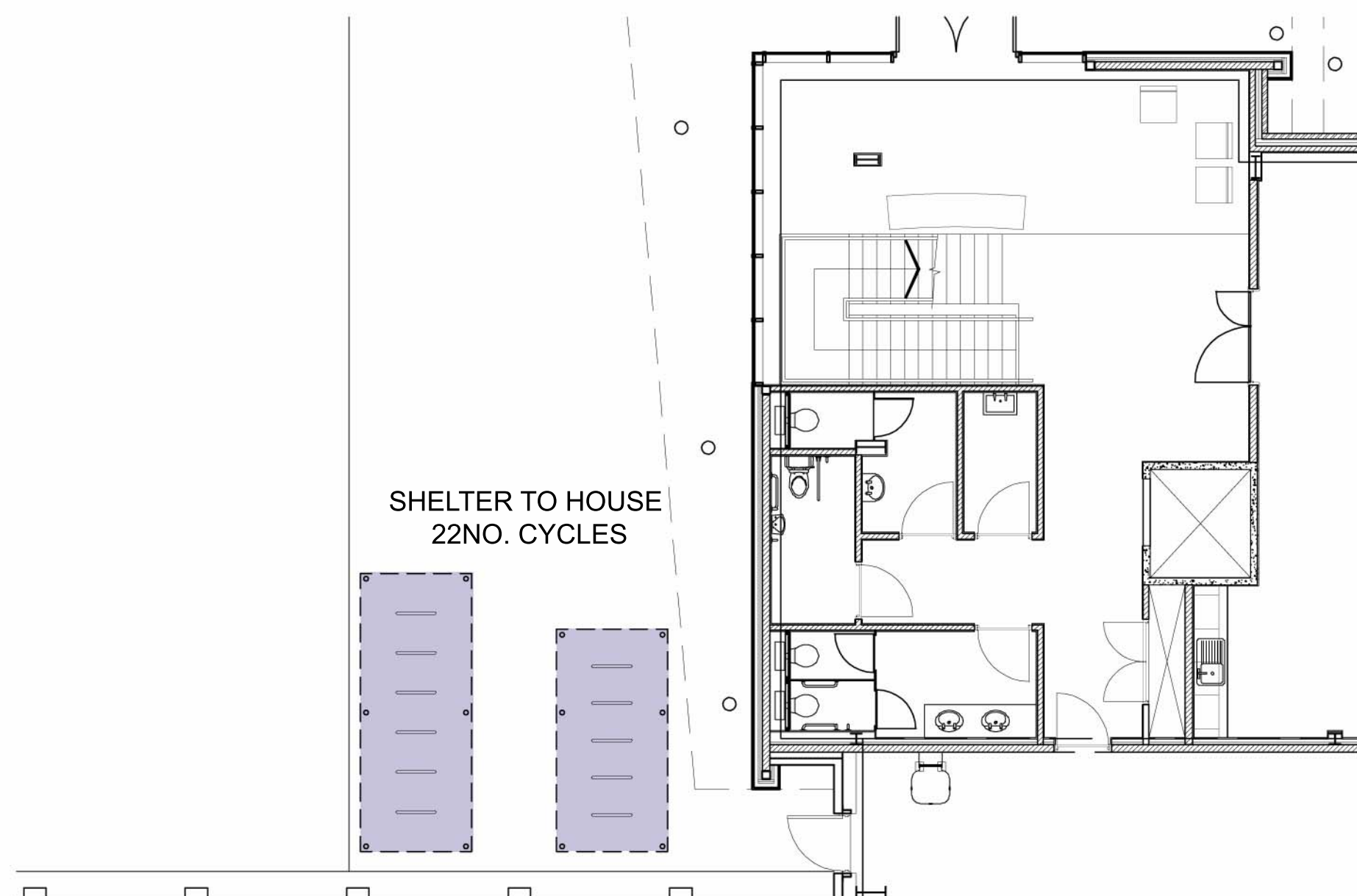


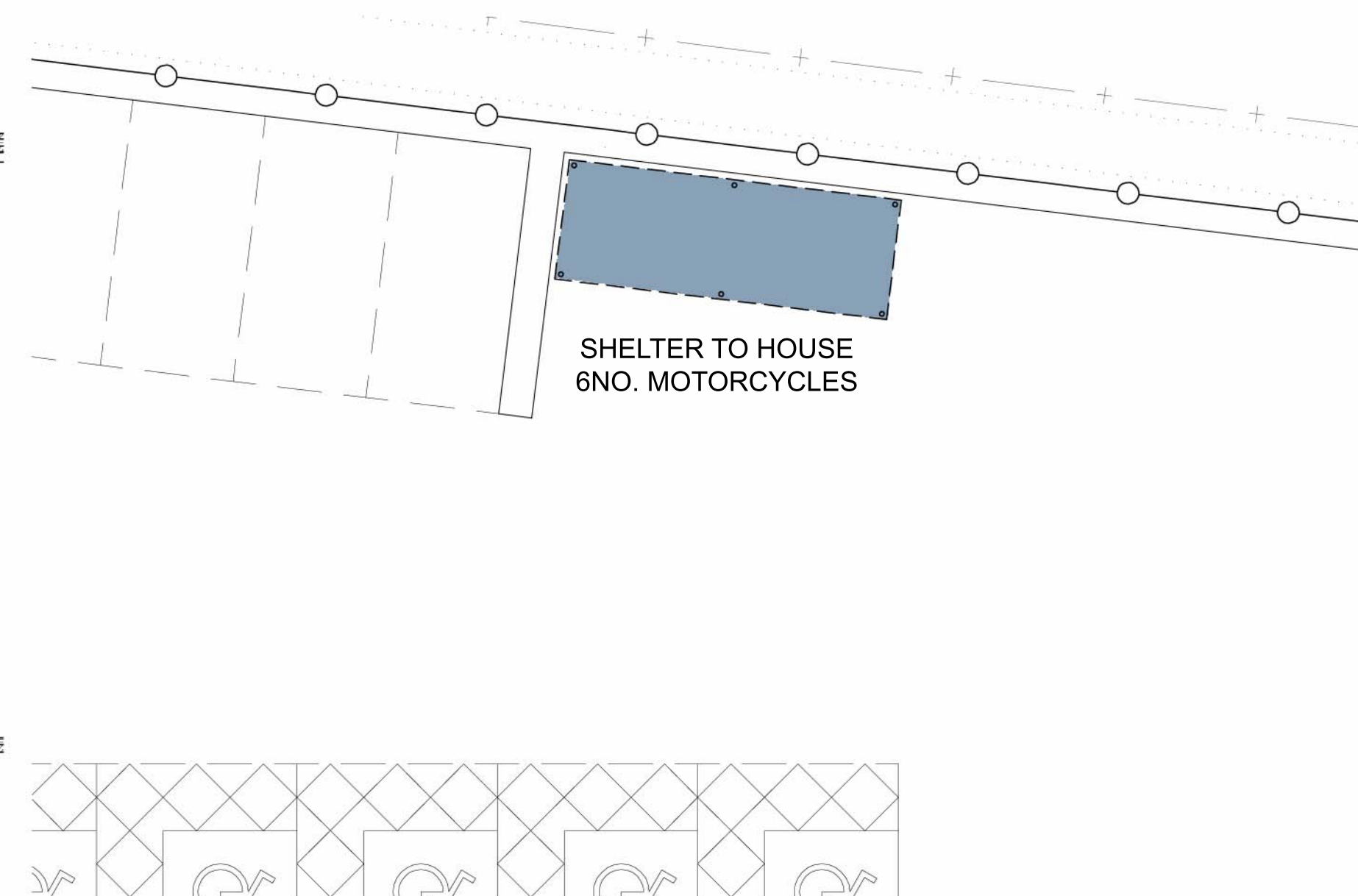
01
117 UNIT C CYCLE PROVISION



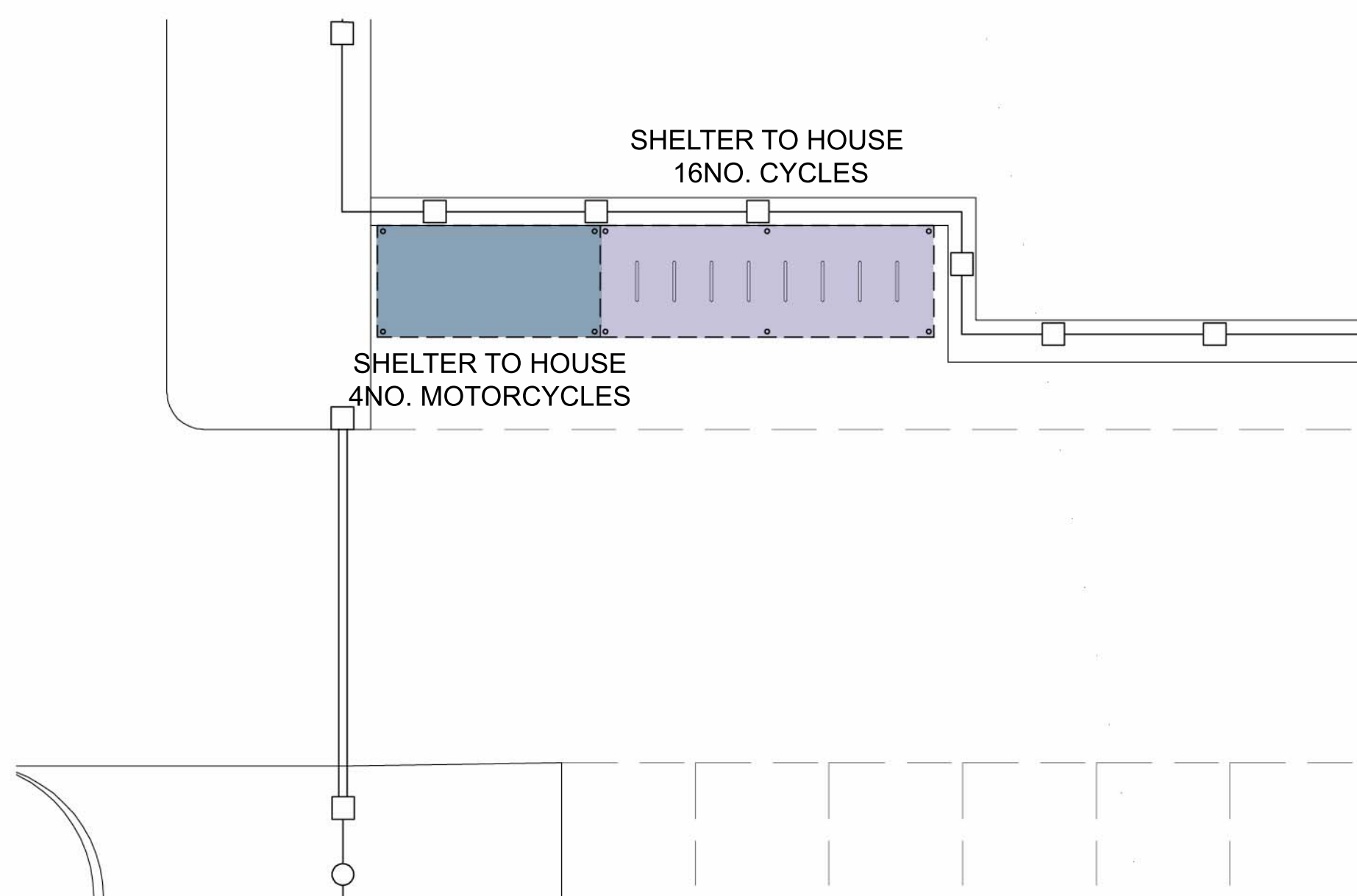
02
117 UNIT C MOTORCYCLE PROVISION



03
117 UNIT D CYCLE PROVISION



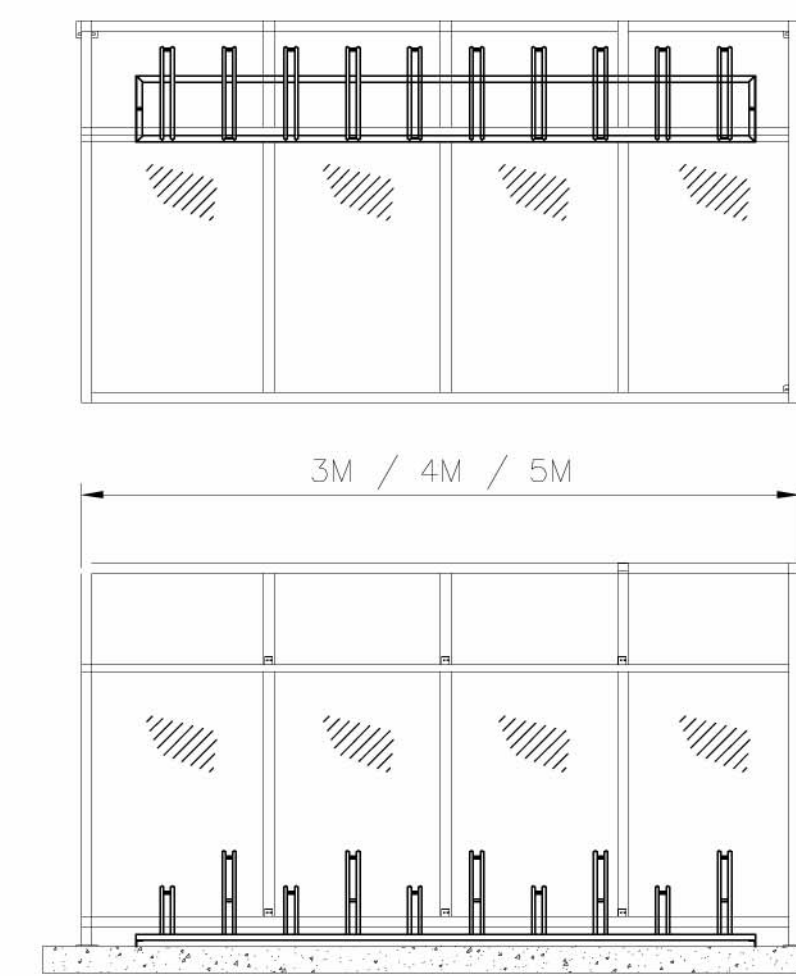
04
117 UNIT D MOTORCYCLE PROVISION



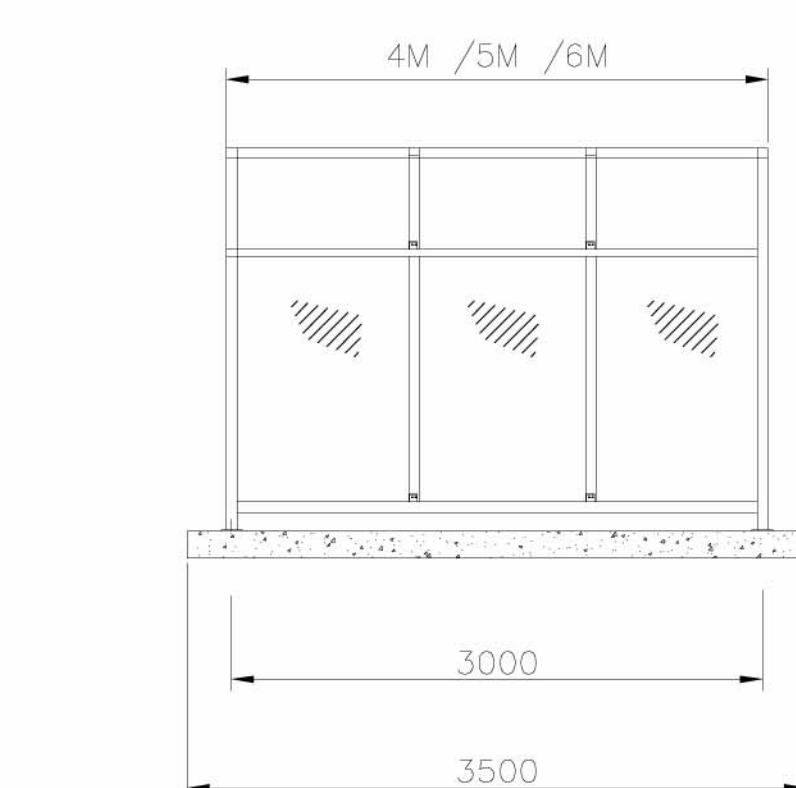
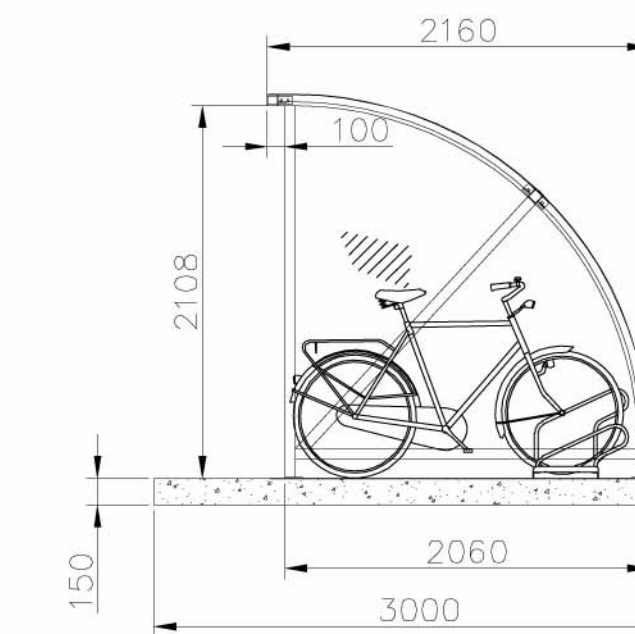
05
117 UNIT G CYCLE & MOTORCYCLE PROVISION



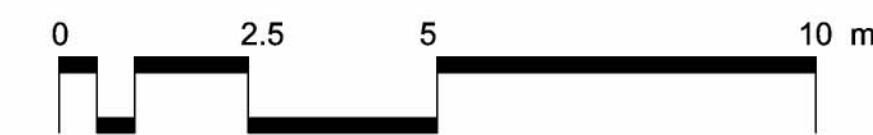
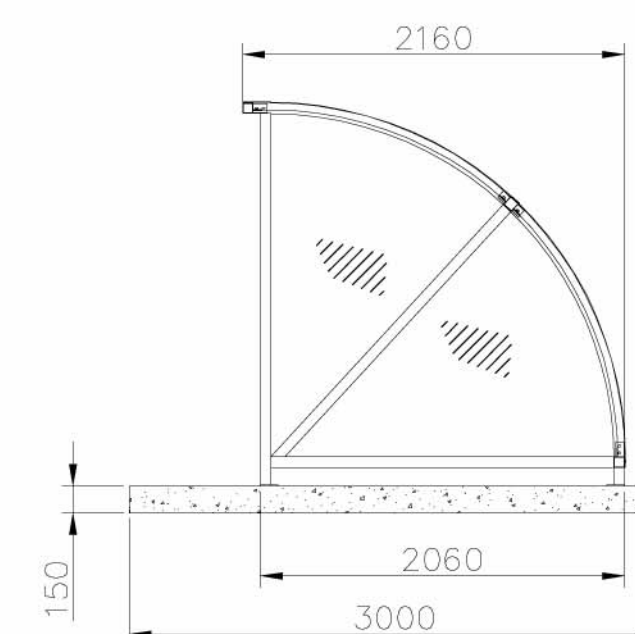
06
117 KEY



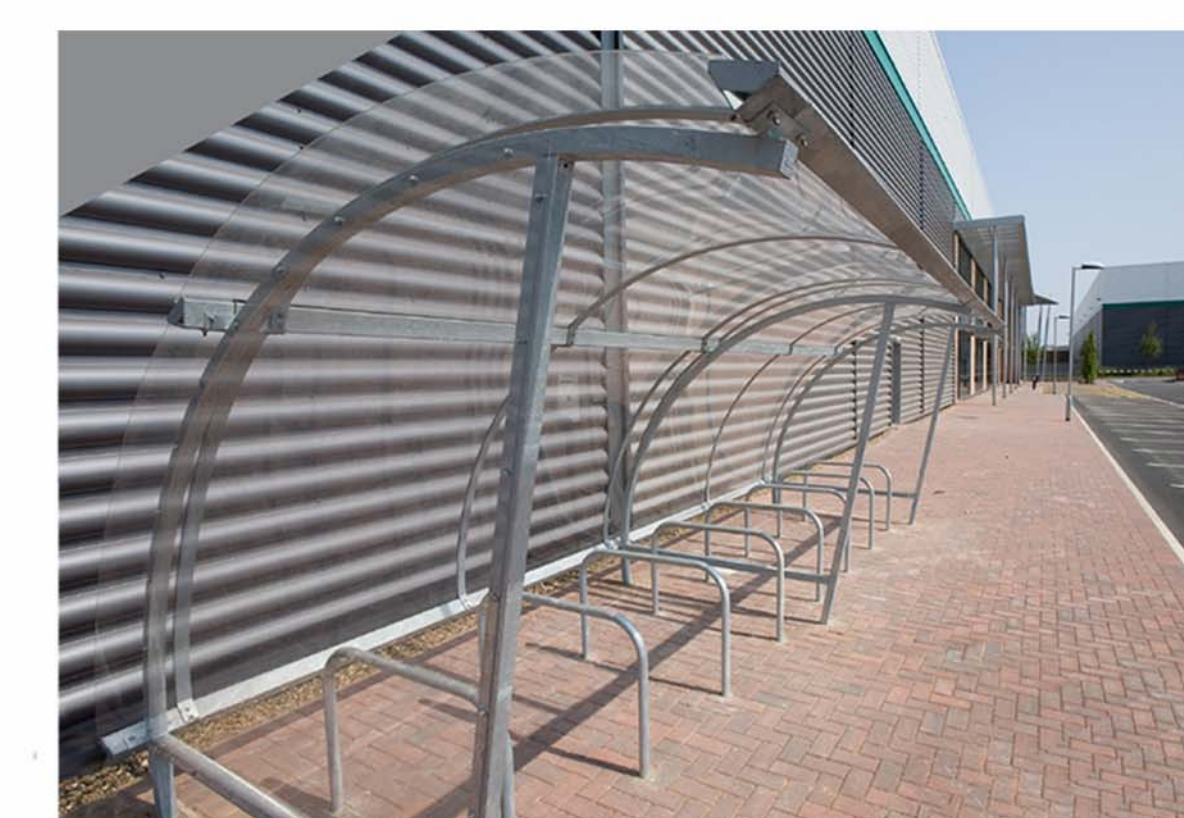
07
117 CYCLE SHELTER DETAILS - SIZE TO SUIT NO. RACKS



08
117 MOTORCYCLE SHELTER DETAILS - SIZE TO SUIT NO. RACKS



REV	DATE	COMMENT	DRAW	CHK
-	19.03.2013	FIRST ISSUE	PW	PW



EXAMPLE OF THE EXISTING CYCLE SHELTERS LOCATED WITHIN THE ESTATE. PROPOSED SHELTERS TO MATCH

CHARTERED ARCHITECTS
 11 PLATO PLACE
 ST. DIONIS ROAD
 LONDON SW6 4TU
 TELEPHONE: 020 7736 6162
 FAX: 020 7736 3896
 info@mso-architects.co.uk

TITLE:
 PHASE 3 - PROLOGIS PARK, HEATHROW
 DRAWING:
 CYCLE AND MOTORCYCLE STORAGE

CLIENT:
 PROLOGIS UK LTD.

DATE	SCALE	DRAWN
MARCH 2013	1:100 @ A1	PW
	STATUS	CHECKED
	FOR PLANNING	PW

DRAWING NUMBER:
 30587-PL117

NOTES:
 SUBJECT TO STATUTORY CONSENTS
 BASED ON GREENHATCH SURVEY NO. 7159ENT_1 & 14285_OGL
 BASED ON OS MAP REPRODUCED BY PERMISSION OF CONTROLLER OF HM STATIONARY OFFICE (c) CROWN COPYRIGHT
 COPYRIGHT RESERVED
 BOUNDARIES BASED ON LAND REGISTRY TITLE NUMBER MX131015
 ADOPTED HIGHWAY BOUNDARY BASED ON INFORMATION RECEIVED FROM LONDON BOROUGH OF HILLINGDON