

01
104

UNIT C - SOUTH ELEVATION

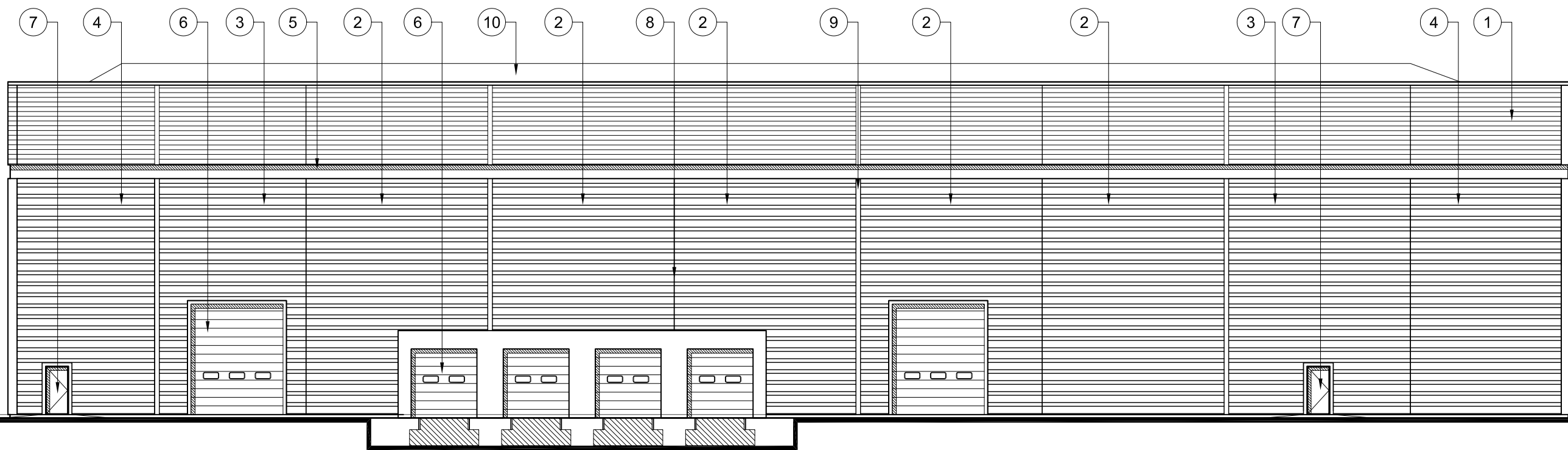
1:200



02
104

UNIT C - WEST ELEVATION

1:200



03
104

UNIT C - NORTH ELEVATION

1:200



04
104

UNIT C - EAST ELEVATION

1:200

NOTES:

SUBJECT TO STATUTORY CONSENTS

BASED ON GREENHATCH SURVEY NO. 7159ENT_1 & 14285_OGL

BASED ON OS MAP REPRODUCED BY PERMISSION OF CONTROLLER OF HM STATIONARY OFFICE (c) CROWN COPYRIGHT

COPYRIGHT RESERVED

BOUNDARIES BASED ON LAND REGISTRY TITLE NUMBER MX131015

ADOPTED HIGHWAY BOUNDARY BASED ON INFORMATION RECEIVED FROM LONDON BOROUGH OF HILLINGDON



SCHEDULE OF EXTERNAL FACING MATERIALS

UNIT

- | | |
|---|---|
| 1 Upper Profiled Wall Cladding | 100 x 32R Horizontally laid reverse profile steel cladding
Finish: British Steel Colorcoat HPS200 colour white |
| 2 Lower Profiled Wall Cladding | CA-5930 half round profile
Finish: British Steel Colorcoat Prisma colour Metallic Silver (light metallic grey) |
| 3 Lower Profiled Wall Cladding | CA-5930 half round profile
Finish: British Steel Colorcoat Prisma colour Grey Aluminum (medium metallic grey) |
| 4 Lower Profiled Wall Cladding | CA-5930 half round profile
Finish: British Steel Colorcoat Prisma colour Zeus (dark metallic grey) |
| 5 High Level Horizontal Band | High Level Recessed Horizontal Feature Band
Colour Ral 6016 (green) |
| 6 Loading Doors : level access & dock levellers | Aluminium, colour RAL 9006 (metallic silver) |
| 7 Personel Doors | Painted metal factory finished, colour RAL 9007 (mid grey) |
| 8 Joints | Vertical 'T' Flashing
Colour at high level - white
Colour at low level - RAL 7016 (dark grey) |
| 9 Joints | Recessed 300mm wide vertical flashing
Colour at high level - white
Colour at low level - RAL 7016 (dark grey) |
| 10 Roof | Profiled steel cladding
Finish: British Steel Colorcoat HPS200 colour albatross (light grey) |
| OFFICES | |
| 12 Brick (below canopy) | Throckley Smooth Buff |
| 13 Curtain Walling | Double glazed green tinted anti-sun glass in polyester powder coated aluminium curtain walling system frame, Inc. doors, colours RAL 7016 (dark grey) |
| 14 Glazing with aluminium insulated backed look a like panels | Fully insulated lookalike glazed panels in polyester powder coated aluminium curtain walling system. |
| 15 Rainscreen Cladding | James and Taylor - 400x200, colour Terracotta (red) |
| 16 Brise Soleil | Aluminium powder coated horizontal louvres, colour RAL 9006 (metallic silver) |
| 17 Overhanging canopy | Powder coated aluminium perforated sheet soffit secretly fixed as Gooding aluminum P1664. Colour RAL 9006 (metallic silver)
Fascia aluminum and secret fixed colour RAL 9006 (metallic silver) |
| 18 Tapered columns | Painted metallic finish to match RAL 9006 (metallic silver) |

–	19.03.2013	FIRST ISSUE	VCN	PW
REV	DATE	COMMENT	DRAW	CHKC



CHARTERED ARCHITECTS

11 PLATO PLACE
ST. JAMES'S ROAD
LONDON SW6 4TU

TELEPHONE 020 7736 6162
FAX 020 7736 3896
info@msa-architects.co.uk



PROLOGIS

TITLE

PHASE 3 - PROLOGIS PARK, HEATHROW

DRAWING

UNIT C
ELEVATIONS

CLIENT

PROLOGIS UK LTD.

DATE

MARCH 2013

SCALE

1:200 @ A1

DRAWN

PW

STATUS

FOR PLANNING

CHECKED

PW

DRAWING NUMBER

30587-PL-104