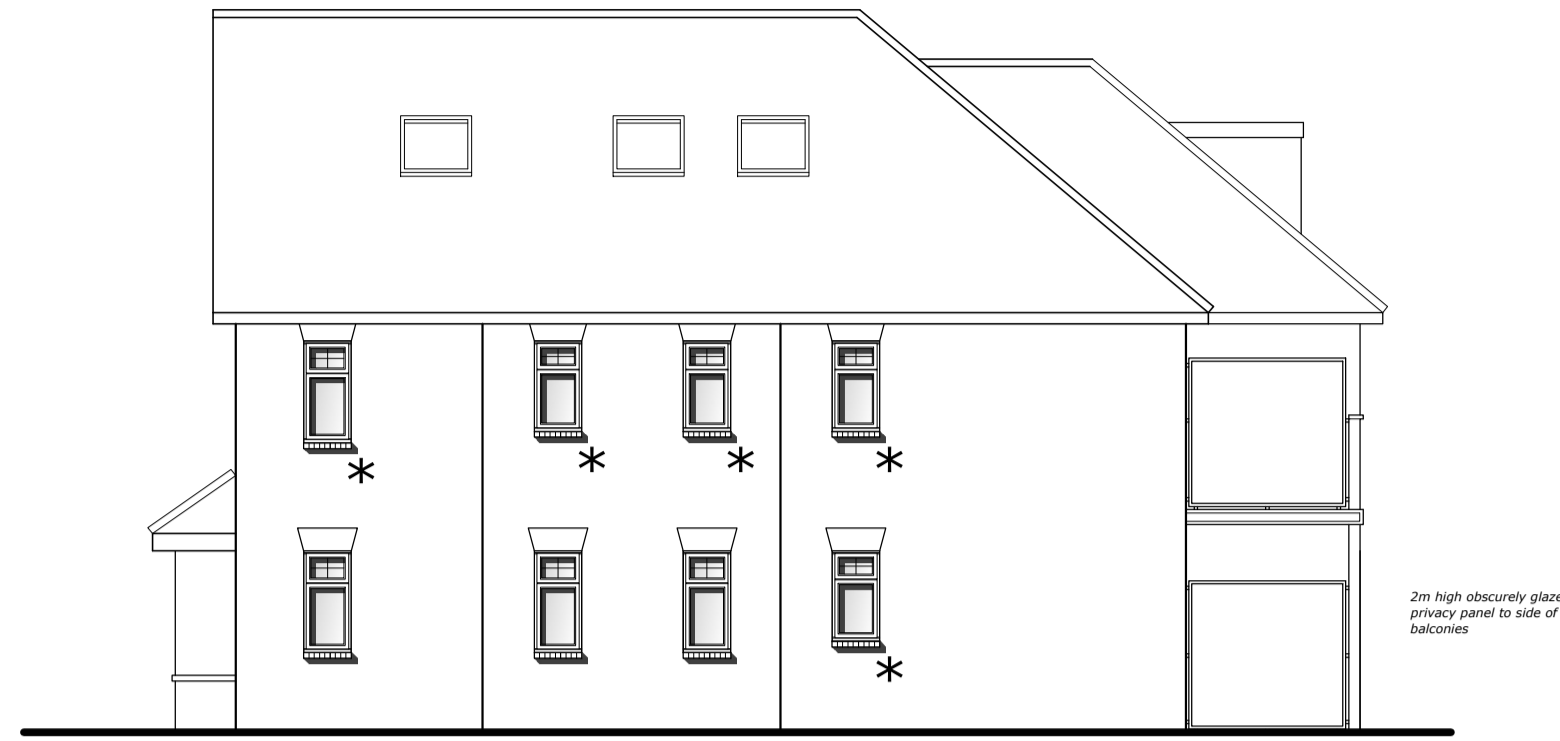


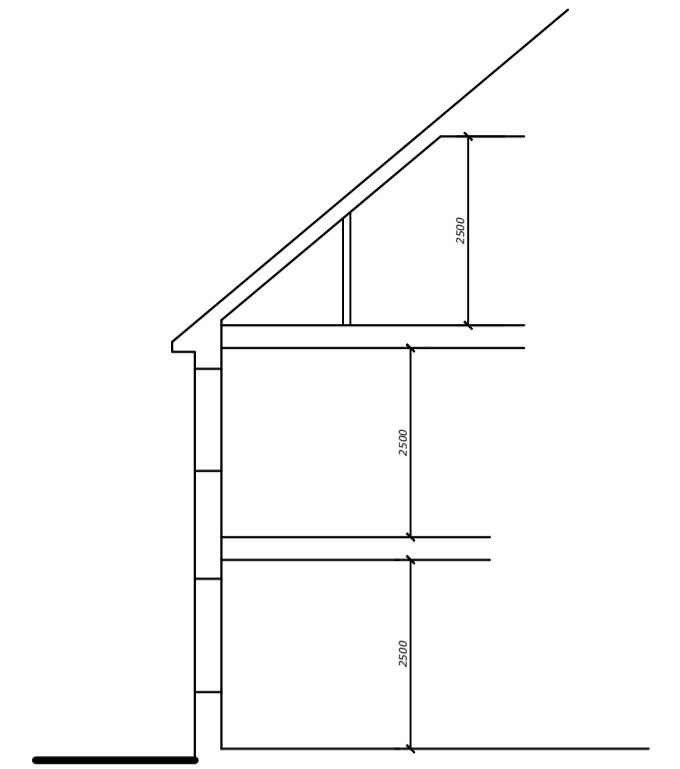


SOUTH EAST



NORTH EAST

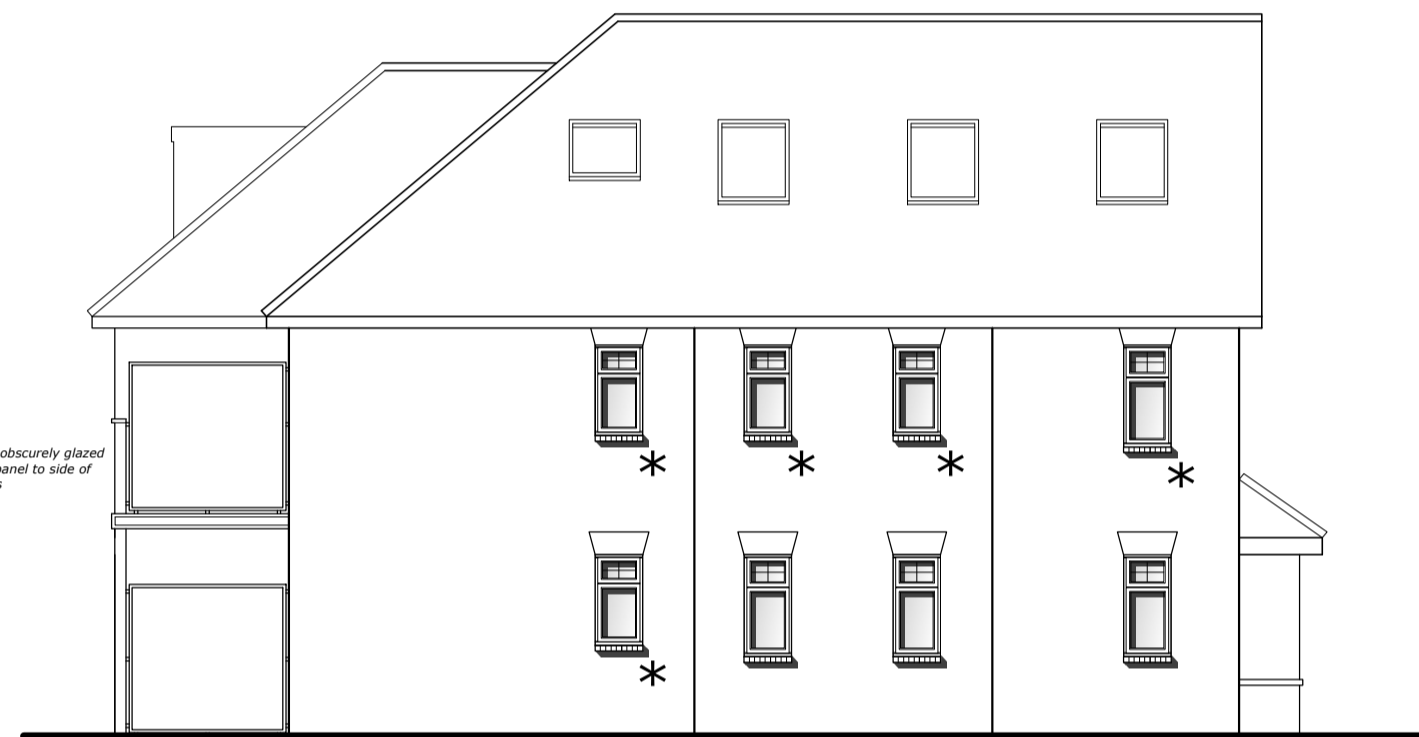
\* Windows to be obscurely glazed and non openable below 1.7m



TYPICAL STOREY ROD

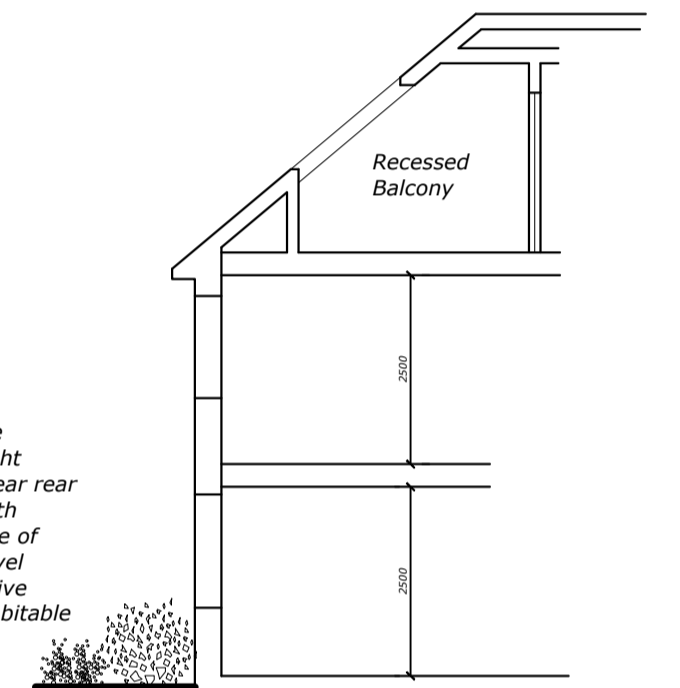


NORTH WEST



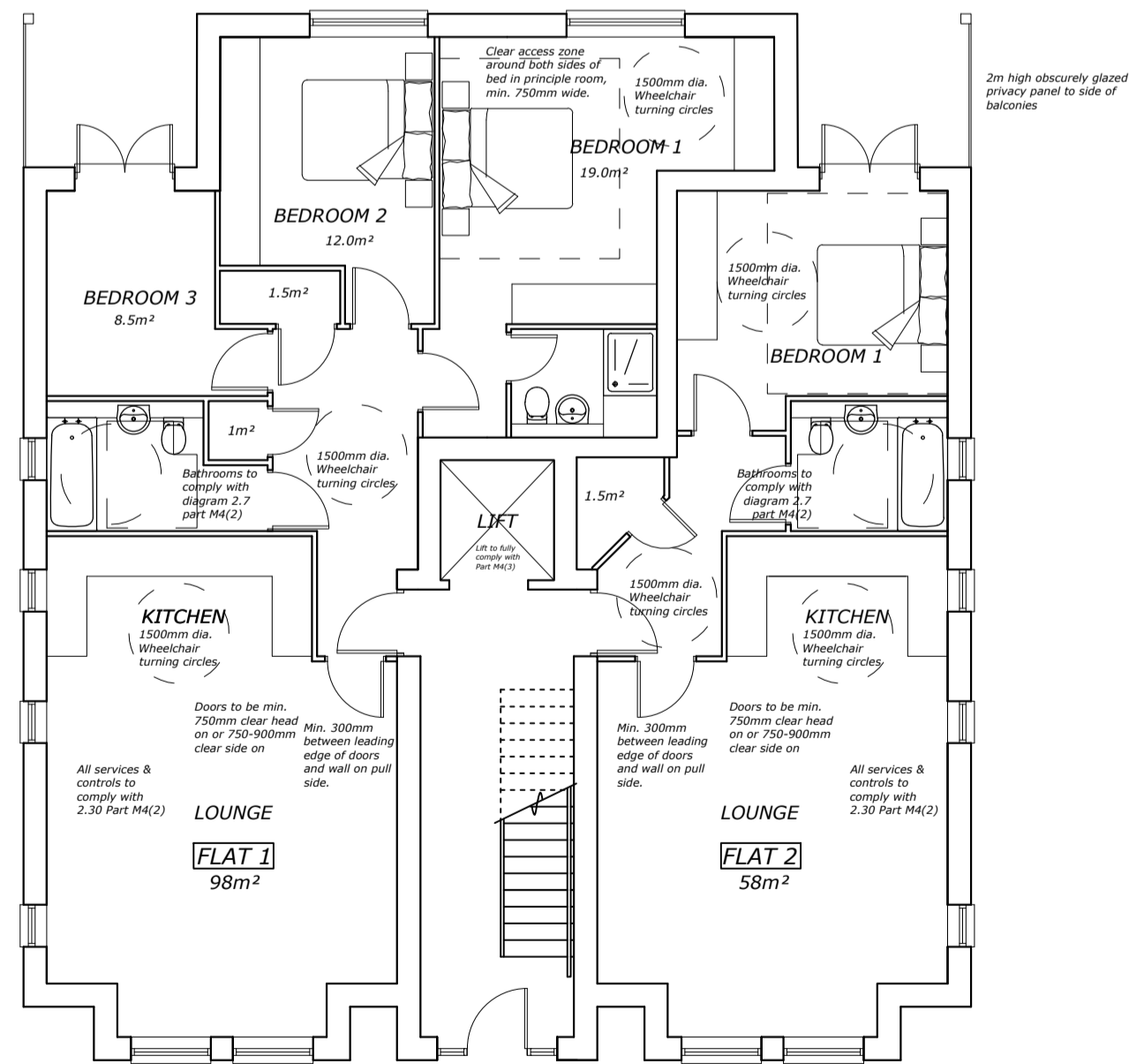
SOUTH WEST

\* Windows to be obscurely glazed and non openable below 1.7m

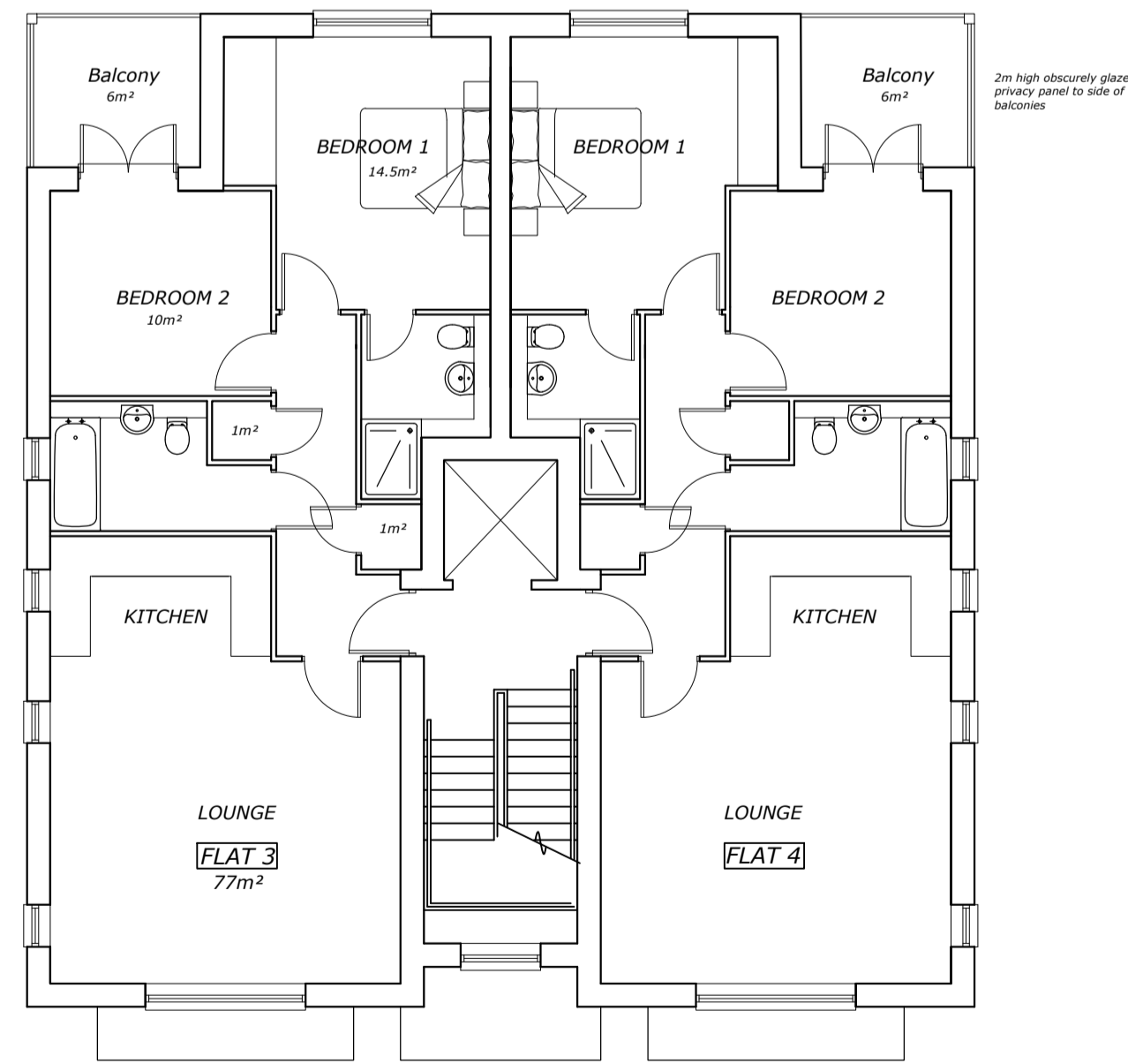


Second Floor Balcony Section

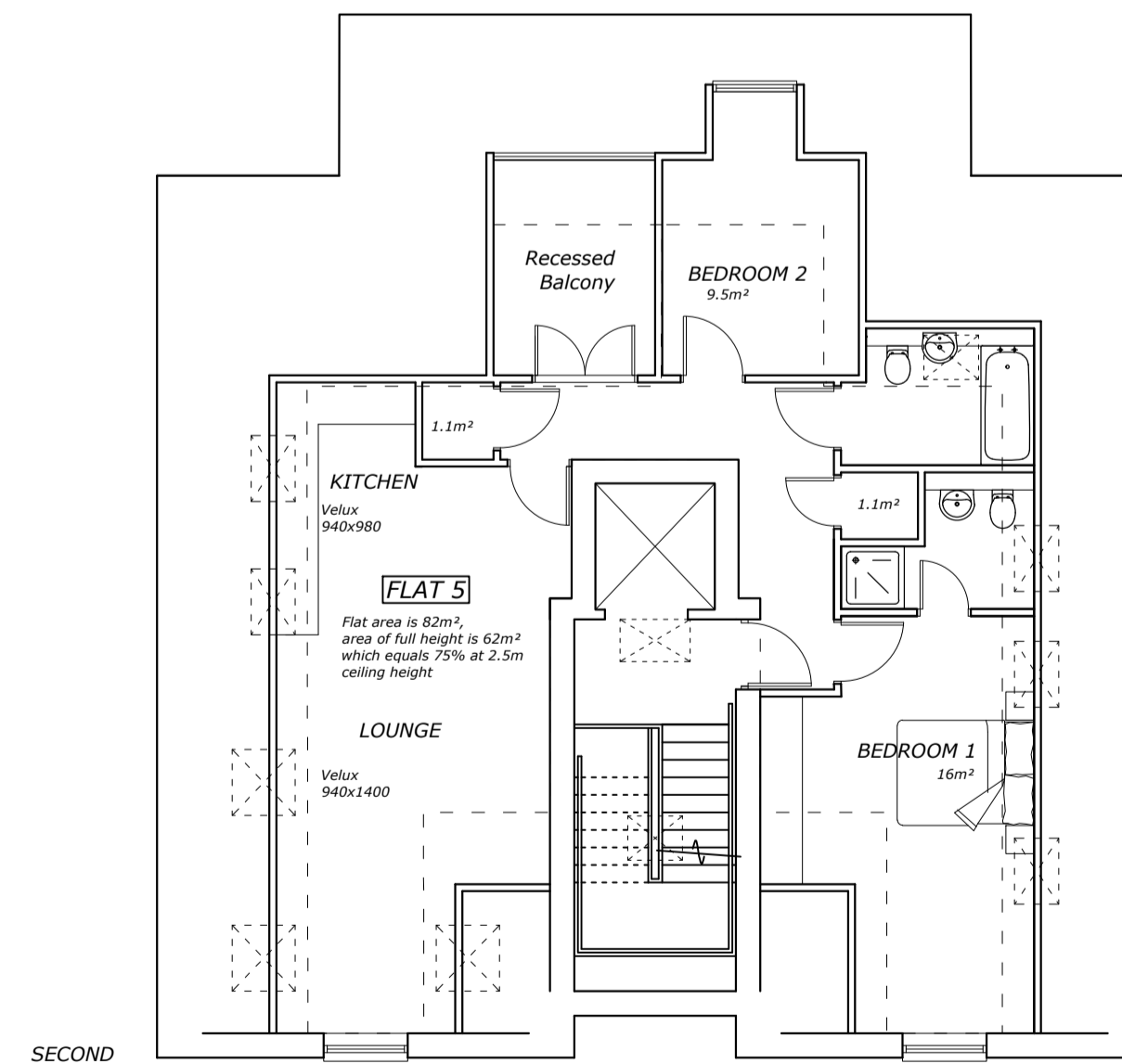
Line of dense medium height planting to rear rear elevation, with additional line of dense low level planting to give privacy to habitable rooms



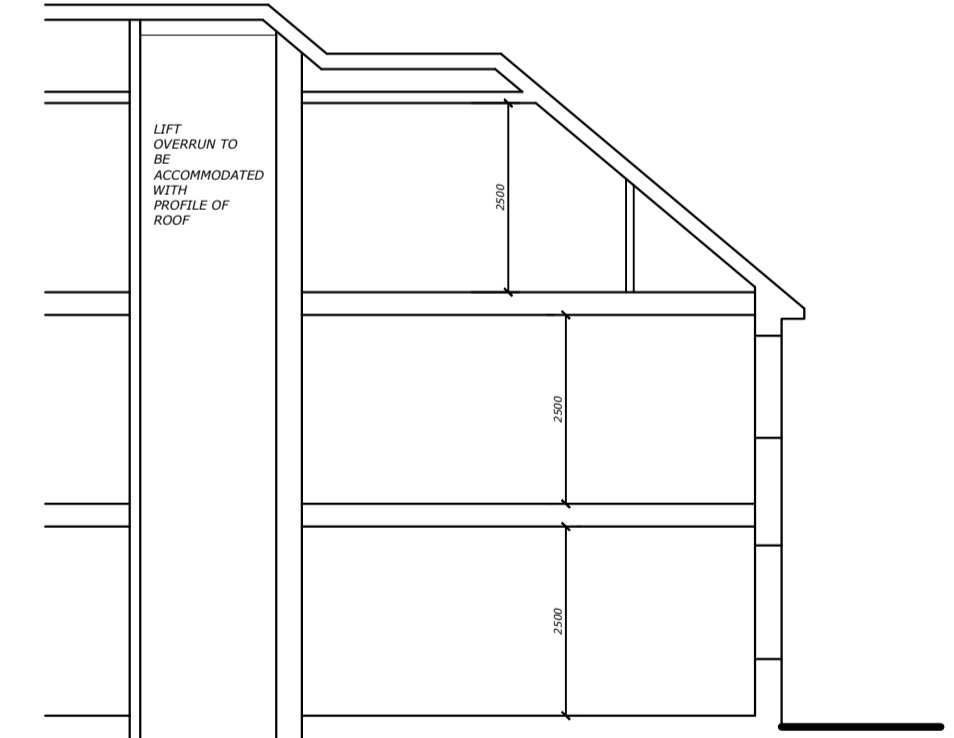
GROUND



FIRST



SECOND



Section Through Lift

Floor Plans and Elevations



Rev A Updated 26-02-26

LAND AT 44 MURRAY ROAD, NORTHWOOD.

**W J Macleod**  
 ARCHITECT  
 70b High Street, Northwood Middlesex HA6 1BL  
 phone 01923 840600

Drawing Number	24 / 3555 / 15	Revision	A
Date	12 / 12 / 25		
Scale	1:100@A1		