

PLANTING SPECIFICATION:

IMPLEMENTATION
All planting to be carried out in the first available planting season following reasonable completion of the development.

TOPSOIL REQUIREMENTS
Imported topsoil to be clean, dry sandy loam topsoil to be to BS 3882, medium texture, neutral pH value, reasonably stone free with no stones over 20mm in size.
Recommended supplier:

GreenBlue Urban
Northpoint, Compass Park, Junction Road, Bodiam TN32 5BS
Phone: 01580 830 800
Email: enquiries@greenblueurban.com
Topsoil depths to be 450mm for shrubs and hedges & 150mm for grass areas. Finished topsoil levels to be 25mm above adjacent paved surfaces, and 300mm wide hard surfaced mowing margin (gravel or paving) to be provided where grass adjoins buildings.

TREE PLANTING
All tree handling, storage and planting should be carried out in accordance with Sections 9 & 10 of BS 5845:2014. Trees: from nursery to independence in the landscape - recommendations. Precise locations of trees to be determined on site to avoid conflict with services. Tree planting package to be supplied by GreenBlue Urban and installed in accordance with their installation and planting specification. Each tree planting package to include Root space soil cells, Renoot 2000, and RootRain Metro. Multi-stem trees to be supported by underground guying, standard trees to be supported with double stake (min 1m long driven 60cm into the ground) and cross bar, and secured with a rubber tie. Stakes to be pressure impregnated softwood, round, peeled, straight, free of projections and pointed at one end.

ORNAMENTAL SHRUB AND GROUND COVER PLANTING
Ornamental shrub and groundcover planting to be spaced evenly in species groups of 3-5 or as otherwise stated on the drawing. Before planting remove and non-perishable containers and prune any badly damaged roots. Plant upright or well-balanced, returning excavated soil to finished level at original soil mark.

CLIPPED HEDGING
Planting as above. Hornbeam (Carpinus) and Barberry (Berberis) hedging to be trimmed twice per year, in early spring and late summer. Aim to achieve bushy growth, clipped to a neat, regular, form at approx. 1.2m high. Lonicera hedging to be trimmed two-three times per year as necessary. Aim to achieve compact bushy growth, clipped to a neat, regular form at approx. 60cm high.

WATERING
Supply a minimum 54 litres per tree and 4.5 litres per shrub at planting.

MULCH
75mm depth of medium grade chipped bark mulch, size 25-65mm, no fines, free of pests, disease, fungus and weeds to be supplied and spread to all ornamental and shrub planting areas.

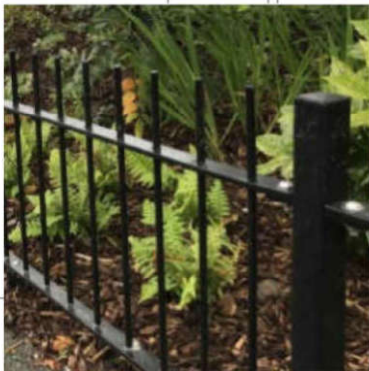
- ESTABLISHMENT MAINTENANCE**
- Trees, plants and grass to be maintained during establishment, and any trees, plants or grassed areas that die, fail to establish, are removed or become damaged or diseased within the first 5 years shall be replaced with plants of the same size and species.
 - Make monthly general maintenance visits to communal areas during growing season. Visits to include weed control around base of all trees and shrubs, grass cutting, grass weed control by a combination of non-residual herbicide and hand weeding, litter picking and removal of leaves from paved areas.
 - Trim ground cover plants (except grasses) to maintain compact bushy growth, and remove growth outside planted area.
 - Trees to be checked annually for any health and safety issues. All tree works should be undertaken in accordance with the requirements of British Standards.
 - Fork over beds as necessary to keep the soil loose, topping up mulch to the specified depth.
 - Water as necessary to ensure establishment and continued thriving of planting, particularly during times of drought.
 - Collect and remove all maintenance arising and rubbish, clean paved areas in accordance with manufacturer's specification.
 - Tree stakes and ties to be checked and adjusted annually, and removed after approx. 3 years. Landscape maintenance to be carried out in accordance with the schedule below for a minimum period of five years:

	J	F	M	A	M	J	J	A	S	O	N	D
GENERAL OPERATIONS												
PLANT REPLACEMENT												
INSPECTION												
PLANT REPLACEMENT												
WATERING												
RE-FIRMING												
LITTER PICKING AND CLEANING PAVING												
OPERATIONS TO TREES												
WEED CONTROL												
PRUNING												
TREE INSPECTION												
TREE SUPPORT, CHECK, ADJUST, REPLACE												
MULCH TOPPING UP												
OPERATIONS TO SHRUBS & HEDGES												
WEED CONTROL												
PRUNING												
MULCH TOPPING UP												

PLANTING SCHEDULE	FORM/GIRTH/HEIGHT	CONDITION	DENSITY	NUMBER
TREES				
Amelanchier alnifolia 'Obelisk'	Feathered 3x8-10cm 250-300cm	RB	N/A	9
Betula utilis 'Snow Queen'	Multi-stem 4x 300-350cm	RB	N/A	1
Crataegus monogyna 'Stricta'	Standard 8-10cm 250-300cm	B	N/A	5
Prunus avium x Prunus canescens 'Schmittii'	Standard 10-12cm 300-350cm	RB	N/A	4
CLIPPED HEDGEROW				
Berberis thunbergii 'Atropurpurea'	60-80cm Branched	C3L	50cm C/C	49
Carpinus betulus	Transplant 60-80cm	B	50cm C/C	185
Lonicera nitida 'Tidy Tips'	1/1 30-40cm	C1L	25cm C/C	144
ORNAMENTAL AND GROUND COVER PLANTING				
Bergenia 'Silberlicht'	25-30cm	C1-2L	5 per m²	23
Cornus canadensis	15-20cm	C1-2L	4 per m²	157
Euonymus fortunei 'Emerald Gaiety'	30-40cm Bushy	C3L	4 per m²	35
Hebe pinguifolia 'Paege'	20-30cm Bushy	C2L	4 per m²	8
Hedera Helix 'Ester'	50-60cm Several shoots	C1L	5 per m²	22
Pachysandra terminalis 'Variegata'	25-30cm	C2L	4 per m²	40
Stipa tenuissima	20-30cm	C1-2L	5 per m²	93

LEGEND:

- Proposed tree.
- Proposed columnar tree in tree grille. Green Blue Urban 'Tay' grille.
- Proposed clipped hedgerow.
- Proposed ornamental shrub and groundcover planting.
- 20mm Cotswold stone gravel.
- 4no. Broap Saltwell Seat BX29 2'30". Or similar approved. Baseplated. RAL 9005 Black frame.
- Marshalls Celestia Smooth Ground Flag Paving - Nebula 600x300x50. Laid to manufacturers specification.
- Grey/Blue brick 450mm dwarf walls - to match building facade brick - Bdn BriqueETNA.
- 1.8m close boarded timber fence on concrete posts and concrete gravel boards with 30cm trellis above.
- 2m high LPS 1175 SR1 Fencing above low brick wall, fence flush with outer edge of wall. Barbican SR1 with finials, Black RAL 9005. Or similar approved.
- 6no. Firstlight Delta 7W 455mm LED Bollard Graphite 3000K. Or similar approved.
- 13no. 12W LED Eyelid Amenity Bulkhead Black 4200K. Or similar approved. Fixed to lower wall of first floor on entrance footpath, at the top of ground floor wall elsewhere. All at 1550mm from G.L.
- Steel column supports for gantry above. Refer to Structural Engineers details.
- Car Park entrance security shutters. UK Roller Shutters Ltd Unit 41 Wombourne Enterprise Park Wombourne WVS DAL Tel: +44 (0) 1384 221 743 sales@ukroller shutters.com



2m high LPS 1175 SR1 Fencing above low brick wall, fence flush with outer edge of wall. Barbican SR1 with finials, Black RAL 9005. Or similar approved.

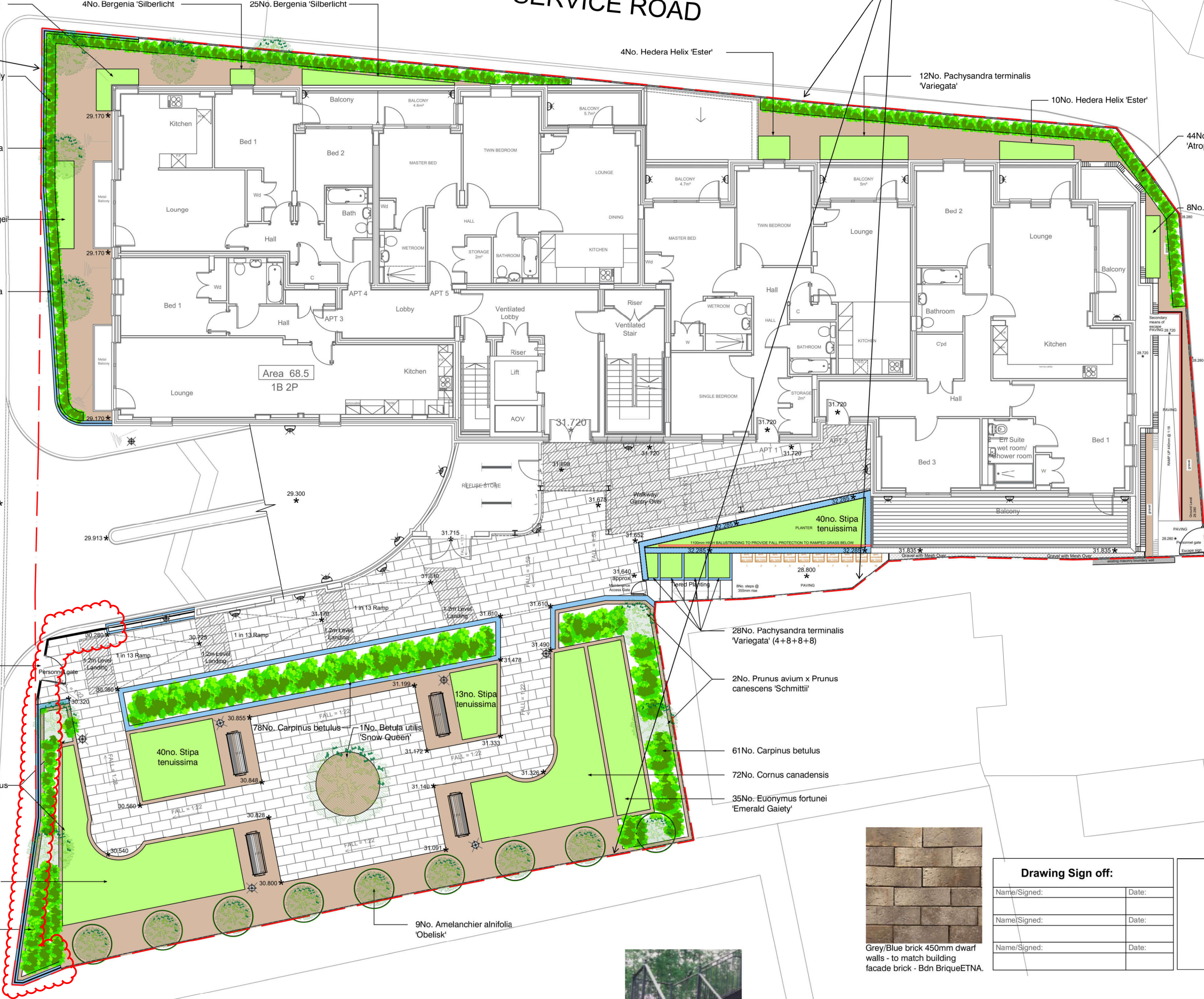


Car Park entrance security shutters.



Marshalls Celestia Smooth Ground Flag Paving - Nebula 600x300x50. Laid to manufacturers specification.

TROUT ROAD



1.8m close boarded timber fence on concrete posts and concrete gravel boards with 30cm trellis above.



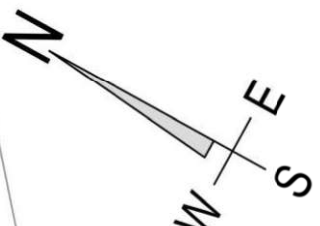
1.8m close boarded timber fence on concrete posts and concrete gravel boards with 30cm trellis above.



Grey/Blue brick 450mm dwarf walls - to match building facade brick - Bdn BriqueETNA.



Steel column supports for gantry above. Refer to Structural Engineers details.



Scale 1:100
0 1m 2m 3m 4m 5m

DO NOT SCALE this drawing; figured dimensions only to be used.

Boundary information is always supplied by others and must be verified on site.

Rev: Date: Description: By:

Drawing Sign off:

Name/Signed:	Date:
Name/Signed:	Date:
Name/Signed:	Date:

Project Name: Onslow Mills, West Drayton

Drawing Title: Landscape Proposal

Project No: ONS/012 Drawing No: DB2-ONS Landscape Proposal Revision: - LP001a

Drawing Status: Submission Date: Dec 2022 Scale: 1:100 @ A1 @ A3 Drawn: DB Reviewed: DB