

The Harris Group Ltd does not accept liability for any deviation to our drawings or specification. This Drawing is copyright and may not be reproduced in whole or part without written authority.

Rev	Date	Description	Drawn	Chk'd
P01	02.07.24	Car park layout amended	JT	DRW
P02	03.02.25	General amendment	IMN/JT	DRW
P03	14.02.25	General amendment	JT	DRW
P04	17.06.25	Text amended	JT	DRW
P05	03.11.25	Unit B, Unit A FE. & car park amended	KB	DRW

SITE AREA	2.30 acres
PROPOSED CUSTOMER SPACES	130 TOTAL SPACES 8 DDA, 7 P&C, 8 ACTIVE & 18 PASSIVE EV SPACES PLUS 8 MOTORCYCLE SPACES

PROPOSED UNIT A	
GROSS INTERNAL AREA	1,856 sqm
GROUND FLOOR	1,750 sqm
MEZZANINE	106 sqm

PROPOSED UNIT B	
GROSS INTERNAL AREA	1,354 sqm

**KEY**  
 - - - BOUNDARY LINE

# MARKUP

BASE PROPOSED DRAWINGS SHOWN AS PER APPROVED APPLICATION 16299/APP/2025/1073

**PLANNING DRAWING**  
 This drawing has been prepared for submission to the relevant Local Authority as part of a Planning Application. It is not intended to assist with the pricing of any elements.  
 For Structural details refer to the Structural & Civil Engineers detailed design drawings & specifications.  
 For M&E information, refer to the M&E Engineers and sub contractor's design drawings & specifications.  
 For Health & Safety information, refer to the Designers Risk Assessments. This drawing is copyright and may not be reproduced in whole or part without written authority.

**THE HARRIS PARTNERSHIP ARCHITECTS**  
 WAKEFIELD - T. 01924 291800  
 2 St John's North, Wakefield, WF1 5QA  
 MANCHESTER - T. 0161 2388555  
 Carvers Warehouse, 77 Dale Street, Manchester, M1 2HG  
 MILTON KEYNES - T. 01908 211 577  
 The Old Rectory, 79 High Street Newport Pagnell, MK16 6AB  
 READING - T. 0118 950 7700  
 101 London Road, Reading, RG1 5BT  
 LONDON - T. 020 7409 1215  
 10 Gees Court, St Christopher's Place, London, W1U 1JJ  
 www.harrispartnership.com

Client  
**LEGAL & GENERAL**

Project Title  
**PROPOSED DEVELOPMENT**

**HAREFIELD ROAD UXBRIDGE UB8 1JS**

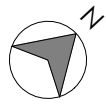
Drawing Title  
**PROPOSED BLOCK PLAN**

Drawn	Checked	Scale @A2	Status	Date
JT	DRW	1:500	N/A	11/23

Drawing Status	Rev.	THP Project No
PLANNING	P05	16401-1

Project No.	Originator	Volume	Level	Type	Role	Number
16401-1	THPR	XX	00	DR	A	1011

01 PROPOSED BLOCK PLAN  
 1:500  
 0 5 10 15 20 25m  
 SCALE 1:500



BASE PROPOSED DRAWINGS SHOWN AS PER APPROVED APPLICATION 16299/APP/2025/1073

**KEY**  
 --- BOUNDARY LINE

The Harris Group Ltd does not accept liability for any deviation to our drawings or specification. This Drawing is copyright and may not be reproduced in whole or part without written authority.

Rev	Date	Description	Drawn	Chkd
P01	27.02.24	Car Park Amended	JT	DRW
P02	05.04.24	Car Park Amended	JT/DRW	DRW
P03	09.04.24	Car Park Amended	DRW	DRW
P04	22.05.24	Car Park Amended	JT	DRW
P04	30.09.24	Floor Plan Amended	KB	DRW
P05	03.02.25	General amendment	IMN/JT	DRW
P06	14.02.25	General amendment	JT	DRW
P07	17.06.25	Text amended	JT	DRW
P08	17.06.25	General revision	JT	DRW
P09	03.11.25	Unit B, Unit A FE, & car park amended	KB	DRW

SITE AREA	2.30 acres
PROPOSED CUSTOMER SPACES	130 TOTAL SPACES 8 DDA, 7 P&C, 8 ACTIVE & 18 PASSIVE EV SPACES) PLUS 8 MOTORCYCLE SPACES

<b>PROPOSED UNIT A</b>	
GROSS INTERNAL AREA	1,856 sqm
GROUND FLOOR	1,750 sqm
MEZZANINE	106 sqm

<b>PROPOSED UNIT B</b>	
GROSS INTERNAL AREA	1,354 sqm

PLANNING DRAWING

THIS DRAWING HAS BEEN PREPARED FOR SUBMISSION TO THE RELEVANT LOCAL AUTHORITY AS PART OF A PLANNING APPLICATION. IT IS NOT INTENDED TO ASSIST WITH THE PRICING OF ANY ELEMENTS.

FOR STRUCTURAL DETAILS REFER TO THE STRUCTURAL & CIVIL ENGINEERS DETAILED DESIGN DRAWINGS & SPECIFICATIONS.

FOR M&E INFORMATION, REFER TO THE M&E ENGINEERS AND SUB CONTRACTOR'S DESIGN DRAWINGS & SPECIFICATIONS.

FOR HEALTH & SAFETY INFORMATION, REFER TO THE DESIGNERS RISK ASSESSMENTS. THIS DRAWING IS COPYRIGHT AND MAY NOT BE REPRODUCED IN WHOLE OR PART WITHOUT WRITTEN AUTHORITY.

WAKEFIELD - T. 01924 291800  
 2 St John's North, Wakefield, WF1 3GA

MANCHESTER - T. 0161 2388555  
 Carvers Warehouse, 77 Dale Street, Manchester, M1 2HG

MILTON KEYNES - T. 01908 211 577  
 The Old Rectory, 79 High Street, Newport Pagnell, MK16 8AB

READING - T. 0118 950 7700  
 101 London Road, Reading, RG1 5BT

LONDON - T. 020 7409 1215  
 10 Gless Court, 51 Christopher's Place, London, W1U 1JJ

**THE HARRIS PARTNERSHIP** ARCHITECTS

www.harrispartnership.com

Client  
**LEGAL & GENERAL**

**MARKUP**

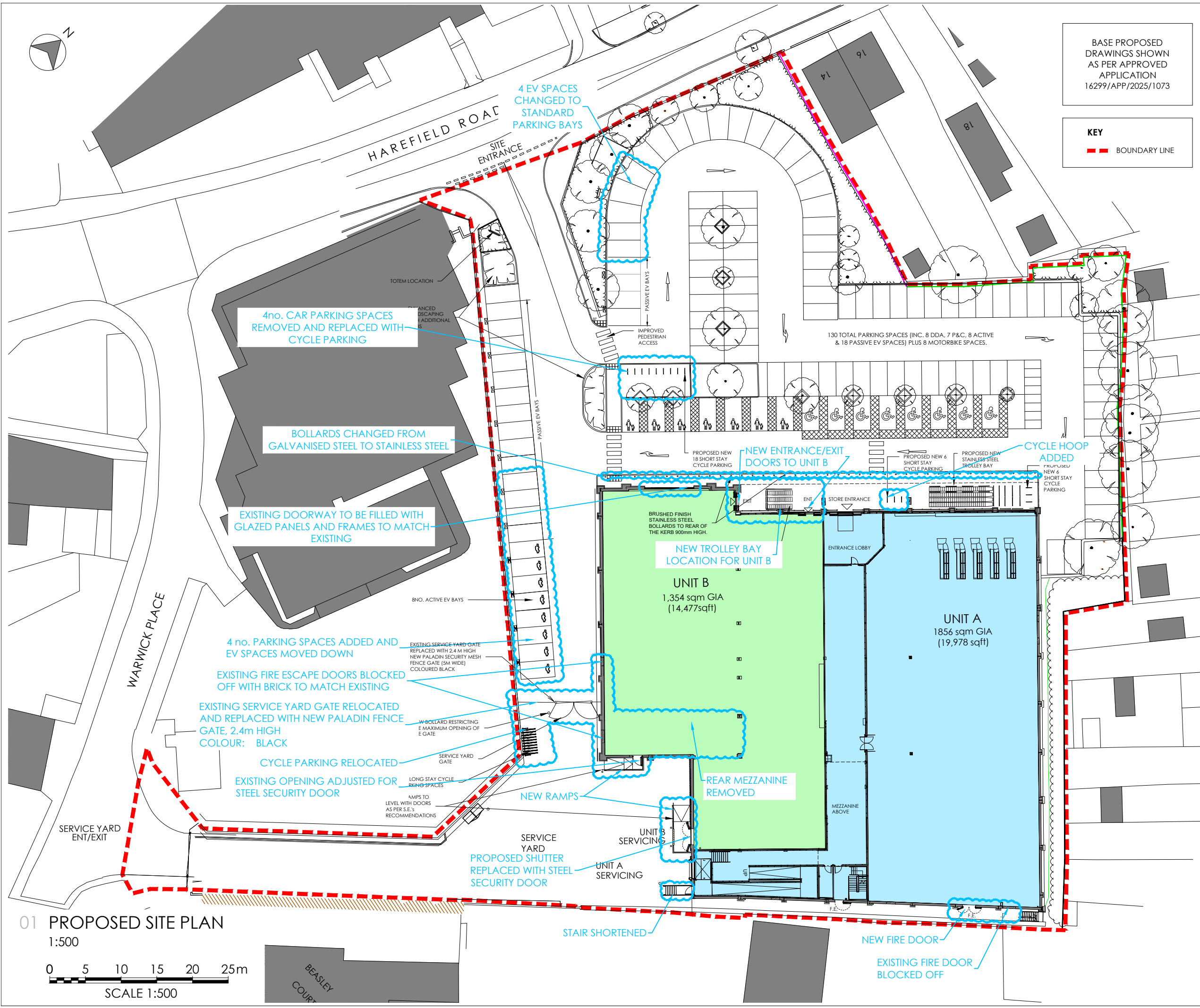
Project Title  
**PROPOSED DEVELOPMENT**

**HAREFIELD ROAD  
 UXBRIDGE  
 UB8 1JS**

Drawing Title  
**PROPOSED SITE PLAN**

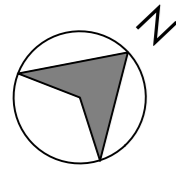
Drawn	Checked	Scale @A3	Status	Date
JT/DRW	DRW	1:500	N/A	02/24
Drawing Status	Rev.	THP Project No		
PLANNING	P09	16401-1		

Project No.	Originator	Volume	Level	Type	Role	Number
16401-1	THPR	XX	00	DR	A	1014



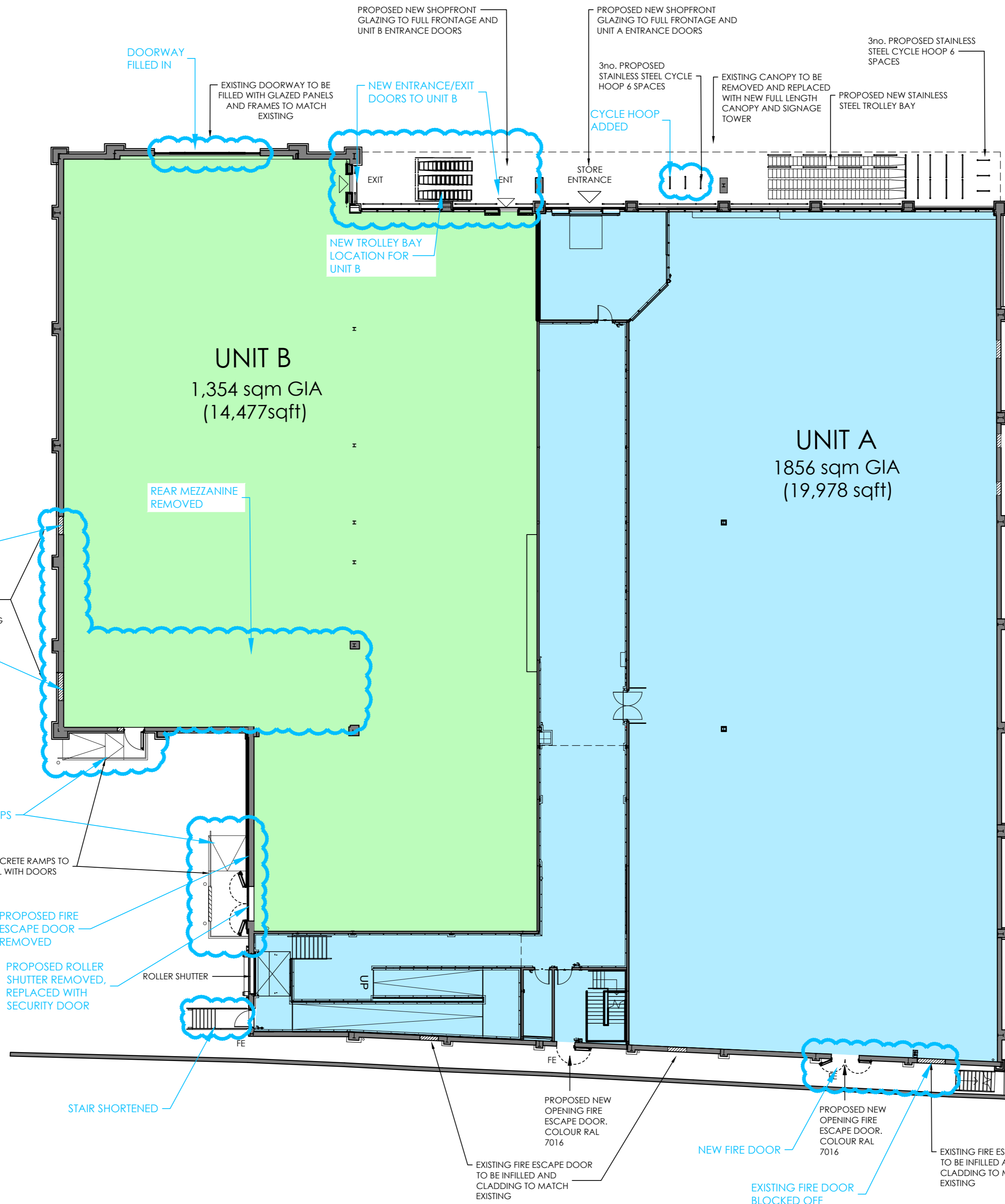
**01 PROPOSED SITE PLAN**  
 1:500

0 5 10 15 20 25m  
 SCALE 1:500



The Harris Group Ltd does not accept liability for any deviation to our drawings or specification. This Drawing is copyright and may not be reproduced in whole or part without written authority.

Rev	Date	Description	Drawn	Chk'd
P01	03.11.25	Unit B, & Unit A fire escape amended	KB	DRW



SITE AREA	2.30 acres
PROPOSED CUSTOMER SPACES	130 TOTAL SPACES 9 DDA, 6 P&C, 8 ACTIVE & 18 PASSIVE EV SPACES PLUS 8 MOTORCYCLE SPACES

PROPOSED UNIT A	
GROSS INTERNAL AREA	1,856 sqm
GROUND FLOOR	1,750 sqm
MEZZANINE	106 sqm

PROPOSED UNIT B	
GROSS INTERNAL AREA	1,354 sqm

# MARKUP

BASE PROPOSED DRAWINGS SHOWN AS PER APPROVED APPLICATION 16299/APP/2025/1073

**PLANNING DRAWING**

This drawing has been prepared for submission to the relevant Local Authority as part of a Planning Application. It is not intended to assist with the pricing of any elements.

For Structural details refer to the Structural & Civil Engineers detailed design drawings & specifications.

For M&E information, refer to the M&E Engineers and sub contractor's design drawings & specifications.

For Health & Safety information, refer to the Designers Risk Assessments. This drawing is copyright and may not be reproduced in whole or part without written authority.

**THE HARRIS PARTNERSHIP ARCHITECTS**

WAKEFIELD - T. 01924 291800  
2 St John's North, Wakefield, WF1 5GA

MANCHESTER - T. 0161 2388555  
Carver Warehouse, 77 Dale Street, Manchester, M1 2JG

MILTON KEYNES - T. 01908 211 577  
The Old Rectory, 79 High Street Newport Pagnal, MK16 6AB

READING - T. 0118 950 7700  
101 London Road, Reading, RG1 5BT

LONDON - T. 020 7409 1215  
10 Gees Court, St Christopher's Place, London, W1U 1JJ

www.harrispartnership.com

Client  
**LEGAL & GENERAL**

Project Title  
**PROPOSED DEVELOPMENT**

**HAREFIELD ROAD  
UXBRIDGE  
UB8 1JS**

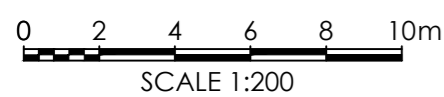
Drawing Title  
**PROPOSED GROUND FLOOR PLANS**

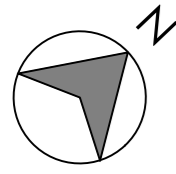
Drawn	Checked	Scale @A2	Status	Date
JT	DRW	1:200	N/A	02/25

Drawing Status	Rev.	THP Project No
PLANNING	P01	16401-1

Project No.	Originator	Volume	Level	Type	Role	Number
16401-1	THPR	XX	00	DR	A	1013

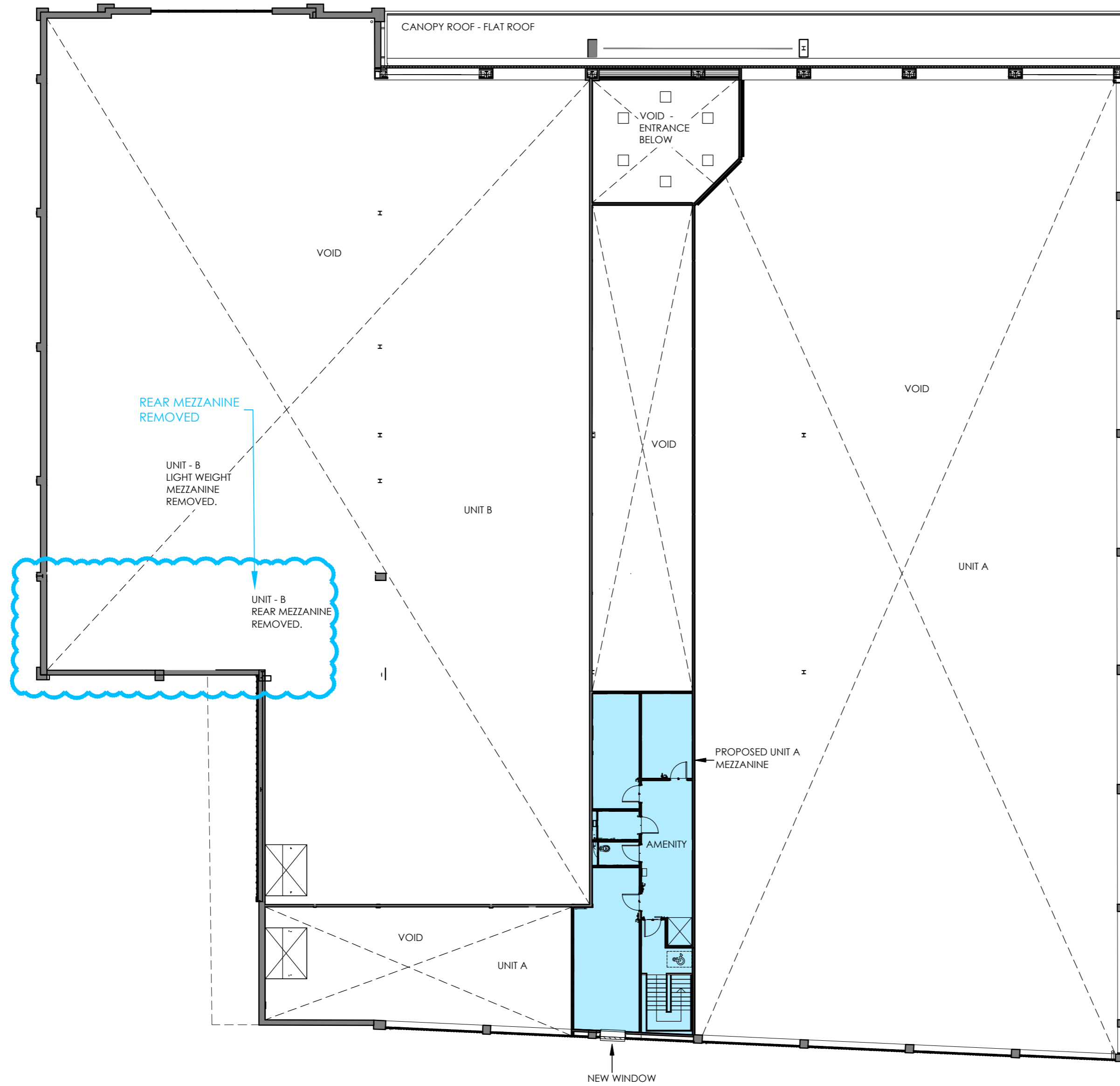
01 PROPOSED GROUND FLOOR PLAN  
1:200





The Harris Group Ltd does not accept liability for any deviation to our drawings or specification. This Drawing is copyright and may not be reproduced in whole or part without written authority.

Rev	Date	Description	Drawn	Chk'd
P01	03.11.25	Unit B mezzanine removed	KB	DRW



SITE AREA	2.30 acres
PROPOSED CUSTOMER SPACES	130 TOTAL SPACES 9 DDA, 6 P&C, 8 ACTIVE & 18 PASSIVE EV SPACES PLUS 8 MOTORCYCLE SPACES

PROPOSED UNIT A	
GROSS INTERNAL AREA	1,856 sqm
GROUND FLOOR	1,750 sqm
MEZZANINE	106 sqm

PROPOSED UNIT B	
GROSS INTERNAL AREA	1,354 sqm

BASE PROPOSED DRAWINGS SHOWN AS PER APPROVED APPLICATION 16299/APP/2025/1073

# MARKUP

**PLANNING DRAWING**

This drawing has been prepared for submission to the relevant Local Authority as part of a Planning Application. It is not intended to assist with the pricing of any elements.

For Structural details refer to the Structural & Civil Engineers detailed design drawings & specifications.

For M&E information, refer to the M&E Engineers and sub contractor's design drawings & specifications.

For Health & Safety information, refer to the Designers Risk Assessments. This drawing is copyright and may not be reproduced in whole or part without written authority.

**THE HARRIS PARTNERSHIP ARCHITECTS**

WAKEFIELD - T. 01924 291800  
2 St John's North, Wakefield, WF1 5QA

MANCHESTER - T. 0161 2388555  
Carver Warehouse, 77 Dale Street, Manchester, M1 2JG

MILTON KEYNES - T. 01908 211 577  
The Old Rectory, 79 High Street Newport Pagnell, MK16 6AB

READING - T. 0118 950 7700  
101 London Road, Reading, RG1 5BT

LONDON - T. 020 7409 1215  
10 Gees Court, St Christopher's Place, London, W1U 1JJ

www.harrispartnership.com

Client  
**LEGAL & GENERAL**

Project Title  
**PROPOSED DEVELOPMENT**

**HAREFIELD ROAD  
UXBRIDGE  
UB8 1JS**

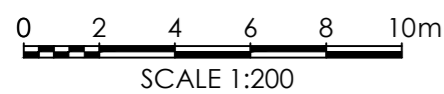
Drawing Title  
**PROPOSED MEZZANINE FLOOR PLAN**

Drawn	Checked	Scale @A2	Status	Date
JT	DRW	1:200	N/A	02/25

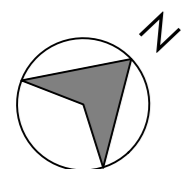
Drawing Status	Rev.	THP Project No
PLANNING	P01	16401-1

Project No.	Originator	Volume	Level	Type	Role	Number
16401-1	THPR	XX	M1	DR	A	1011

01 PROPOSED MEZZANINE FLOOR PLAN  
1:200



Rev	Date	Description	Drawn	Chk'd
P01	03.02.25	General Amendments	IMN/JT	DRW
P02	14.02.25	Notes amended	JT	DRW
P03	03.11.25	Unit B roof amended & colour changed	KB	DRW



ROOF COLOUR CHANGED FROM RAL 9006 TO RAL 7046 MID GREY

NEW ROOF TO UNIT B - COLOUR RAL 7046 MID GREY AND ALL SKYLIGHTS TO BE REMOVED

NEW ROOF TO UNIT A - COLOUR RAL 7046 MID GREY AND ALL SKYLIGHTS TO BE REMOVED

ROOF COLOUR CHANGED FROM RAL 9006 TO RAL 7046 MID GREY

ROOF COLOUR CHANGED FROM RAL 9006 TO RAL 7046 MID GREY

NEW ROOF TO CANOPY - COLOUR RAL 7046 MID GREY AND ALL SKYLIGHTS TO BE REMOVED

PROPOSED SIGNAGE TOWER TENANT ADVERTISEMENT SUBJECT TO SEPARATE APPLICATION

FLAT ROOF

PROPOSED NEW ROOF GUTTER

FALL ARREST & MANSAFE

FALL

FALL

FALL

FALL

FALL ARREST & MANSAFE

FALL ARREST & MANSAFE ADDED.

# MARKUP

BASE PROPOSED DRAWINGS SHOWN AS PER APPROVED APPLICATION 16299/APP/2025/1073

ALL SIGNAGE SHOWN INDICATIVELY AND SUBJECT TO A SEPARATE ADVERTISE APPLICATION

**PLANNING DRAWING**  
 This drawing has been prepared for submission to the relevant Local Authority as part of a Planning Application. It is not intended to assist with the pricing of any elements.  
 For Structural details refer to the Structural & Civil Engineers detailed design drawings & specifications.  
 For M&E information, refer to the M&E Engineers and sub-contractor's design drawings & specifications.  
 For Health & Safety information, refer to the Designers Risk Assessments. This drawing is copyright and may not be reproduced in whole or part without written authority.

**THE HARRIS PARTNERSHIP** ARCHITECTS  
 WAKEFIELD - T. 01924 291800  
 2 St John's North, Wakefield, WF1 5GA  
 MANCHESTER - T. 0161 2388555  
 Carver Warehouse, 77 Dale Street, Manchester, M1 2HG  
 MILTON KEYNES - T. 01908 211 577  
 The Old Rectory, 79 High Street Newport Pagnell, MK16 8AB  
 READING - T. 0118 950 7700  
 101 London Road, Reading, RG1 5BT  
 LONDON - T. 020 7409 1215  
 10 Gees Court, St Christopher's Place, London, W1U 1JJ  
[www.harrispartnership.com](http://www.harrispartnership.com)

Client  
**LEGAL & GENERAL**

Project Title  
**PROPOSED DEVELOPMENT**

**HAREFIELD ROAD  
 UXBRIDGE  
 UB8 1JS**

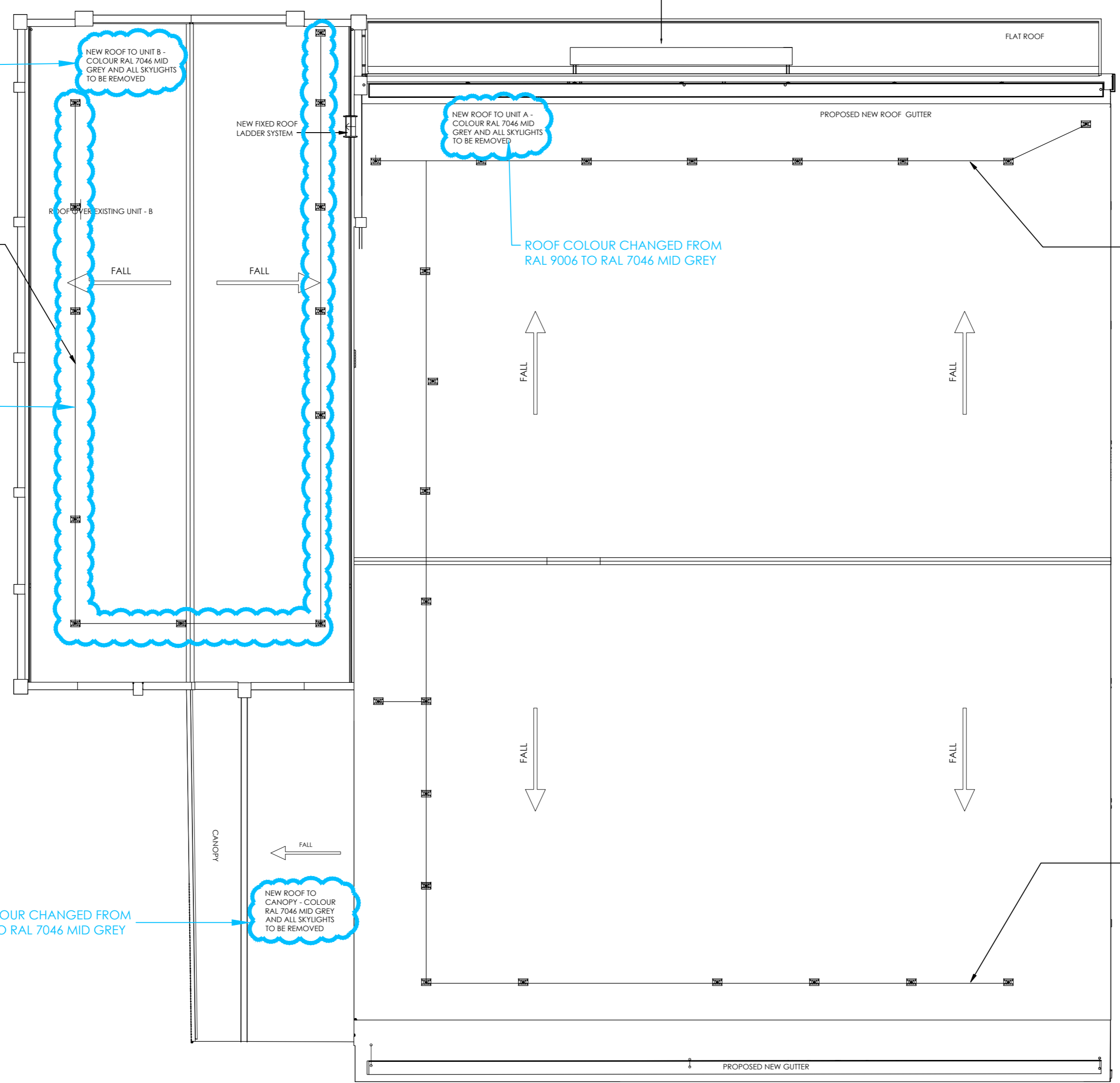
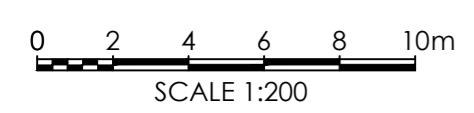
Drawing Title  
**PROPOSED ROOF PLAN**

Drawn	Checked	Scale @A2	Status	Date
JT	DRW	1:200	N/A	11/23

Drawing Status	Rev.	THP Project No
PLANNING	P03	16401-1

Project No.	Originator	Volume	Level	Type	Role	Number
16401-1	THPR	XX	R1	DR	A	1011

01 PROPOSED ROOF PLAN  
 1:200



The Harris Group Ltd does not accept liability for any deviation to our drawings or specification. This Drawing is copyright and may not be reproduced in whole or part without written authority.

Rev	Date	Description	Drawn	Chk'd
P01	02.07.24	Cycle hoops and clad amended	JT	DRW
P02	03.02.25	General Amendment	IMN/JT	DRW
P03	12.02.25	General Amendment	JT	DRW
P04	03.11.25	Unit B shopfront & service yard amended	KB	DRW
P05	22.11.25	Unit B shopfront signage amended	JT	DRW

# MARKUP

BASE PROPOSED DRAWINGS SHOWN AS PER APPROVED APPLICATION 16299/APP/2025/1073

ALL SIGNAGE SHOWN INDICATIVELY AND SUBJECT TO A SEPARATE ADVERTISE APPLICATION

## PLANNING DRAWING

This drawing has been prepared for submission to the relevant Local Authority as part of a Planning Application. It is not intended to assist with the pricing of any elements.

For Structural details refer to the Structural & Civil Engineers detailed design drawings & specifications.

For M&E information, refer to the M&E Engineers and sub contractor's design drawings & specifications.

For Health & Safety information, refer to the Designers Risk Assessments. This drawing is copyright and may not be reproduced in whole or part without written authority.

**THE HARRIS PARTNERSHIP** ARCHITECTS

WAKEFIELD - T. 01924 291800  
2 St John's North, Wakefield, WF1 3GA

MANCHESTER - T. 0161 2388555  
Carvers Warehouse, 77 Dale Street, Manchester, M1 2HG

MILTON KEYNES - T. 01908 211 577  
The Old Rectory, 79 High Street, Newport Pagnell, MK16 8AB

READING - T. 0118 950 7700  
101 London Road, Reading, RG1 5BT

LONDON - T. 020 7409 1215  
10 Gress Court, St Christopher's Place, London, W1U 1JJ

Client  
**LEGAL & GENERAL**

Project Title  
**PROPOSED DEVELOPMENT**

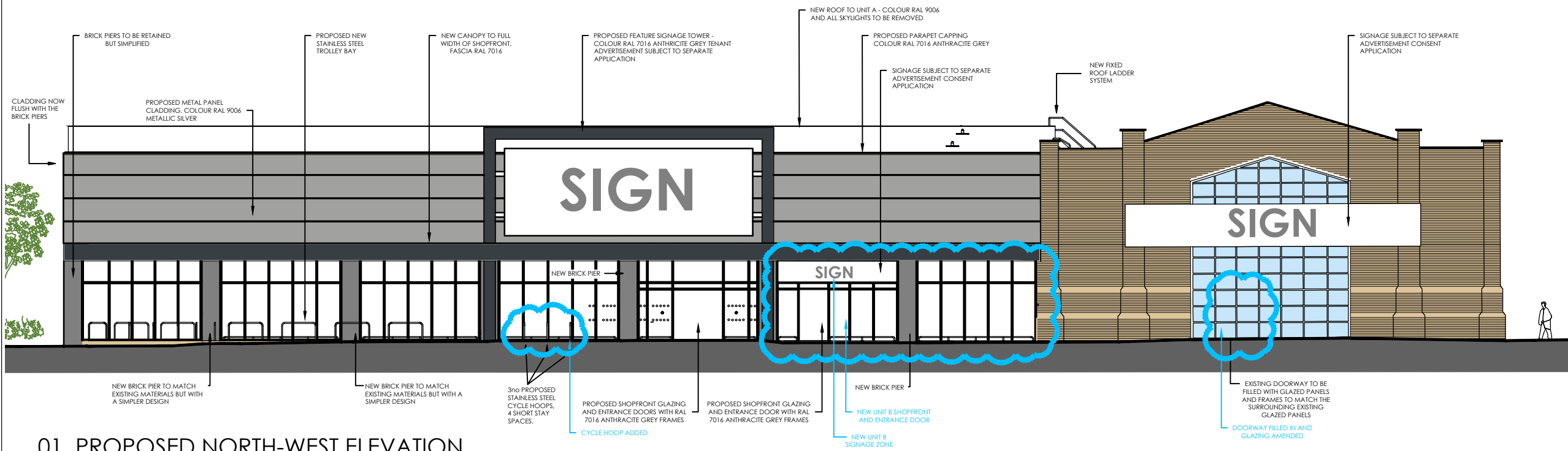
**HAREFIELD ROAD  
UXBRIDGE  
UB8 1JS**

Drawing Title  
**PROPOSED ELEVATIONS (1 OF 2)**

Drawn	Checked	Scale @A3	Status	Date
JT	DRW	1:200	N/A	11/23

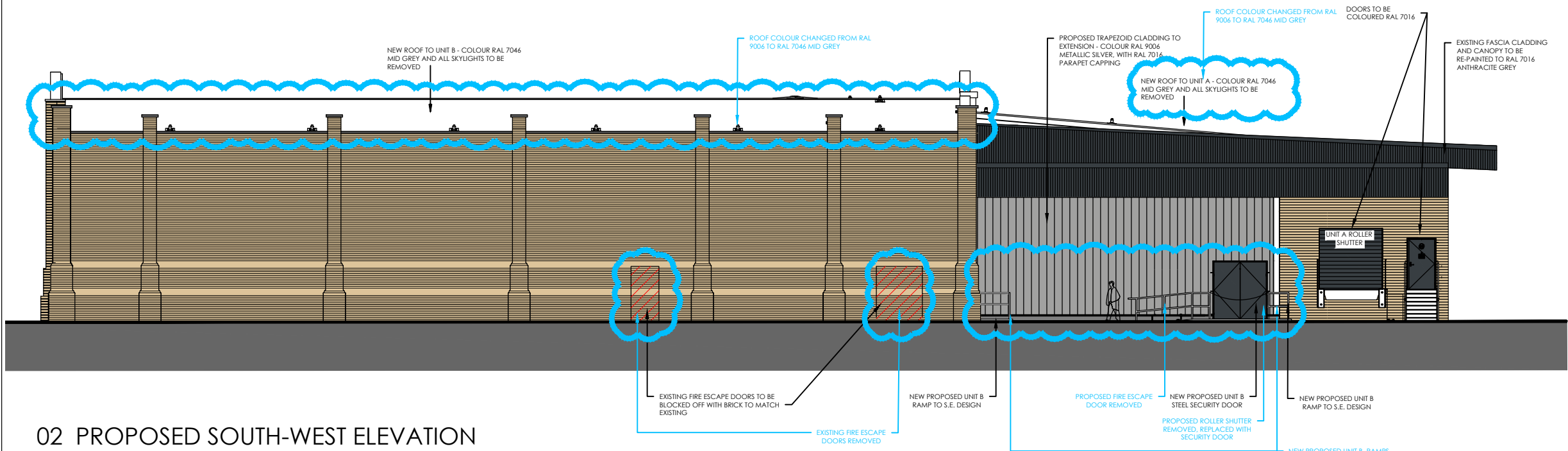
Drawing Status	Rev.	THP Project No
PLANNING	P05	16401-1

Project No.	Originator	Volume	Level	Type	Role	Number
16401-1	THPR	XX	EL	DR	A	1011



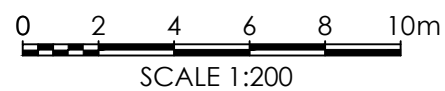
## 01 PROPOSED NORTH-WEST ELEVATION

1:200



## 02 PROPOSED SOUTH-WEST ELEVATION

1:200



The Harris Group Ltd does not accept liability for any deviation to our drawings or specification. This Drawing is copyright and may not be reproduced in whole or part without written authority.

Rev	Date	Description	Drawn	Chkd
P01	02.07.24	Cycle hoops and cladding amended	JT	DRW
P02	03.02.25	General Amendment	IMN/JT	DRW
P03	12.02.25	General Amendment	JT	DRW
P04	03.11.25	Unit B shopfront & service yard amended	KB	DRW

# MARKUP

BASE PROPOSED DRAWINGS SHOWN AS PER APPROVED APPLICATION 16299/APP/2025/1073

ALL SIGNAGE SHOWN INDICATIVELY AND SUBJECT TO A SEPARATE ADVERTISE APPLICATION

## PLANNING DRAWING

This drawing has been prepared for submission to the relevant Local Authority as part of a Planning Application. It is not intended to assist with the pricing of any elements.

For Structural details refer to the Structural & Civil Engineers detailed design drawings & specifications.

For M&E information, refer to the M&E Engineers and sub contractor's design drawings & specifications.

For Health & Safety information, refer to the Designers Risk Assessments. This drawing is copyright and may not be reproduced in whole or part without written authority.

WAKEFIELD - T. 01924 291800  
2 St John's North, Wakefield, WF1 3GA

MANCHESTER - T. 0161 2388555  
Carvers Warehouse, 77 Dale Street, Manchester, M1 2HG

MILTON KEYNES - T. 01908 211 577  
The Old Rectory, 79 High Street, Newport Pagnell, MK16 8AB

READING - T. 0118 950 7700  
101 London Road, Reading, RG1 5BT

**ARCHITECTS** LONDON - T. 020 7409 1215  
www.harrispartnership.com 10 Gies Court, St Christopher's Place, London, W1U 1JJ

Client  
**LEGAL & GENERAL**

Project Title  
**PROPOSED DEVELOPMENT**

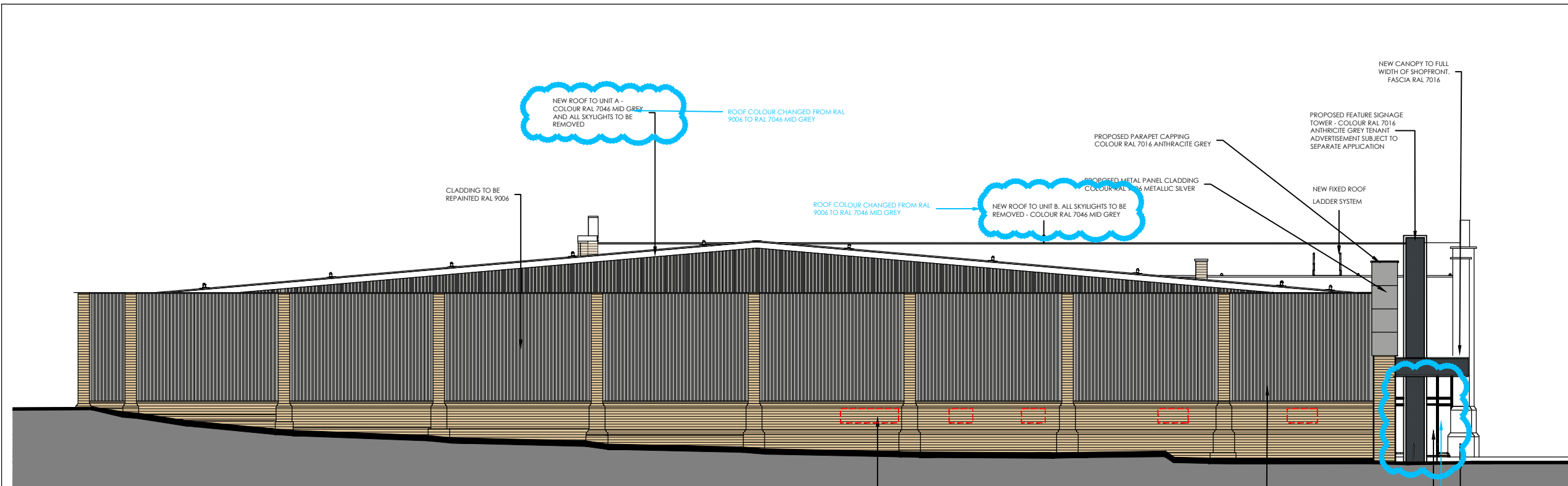
**HAREFIELD ROAD  
UXBRIDGE  
UB8 1JS**

Drawing Title  
**PROPOSED ELEVATIONS (2 OF 2)**

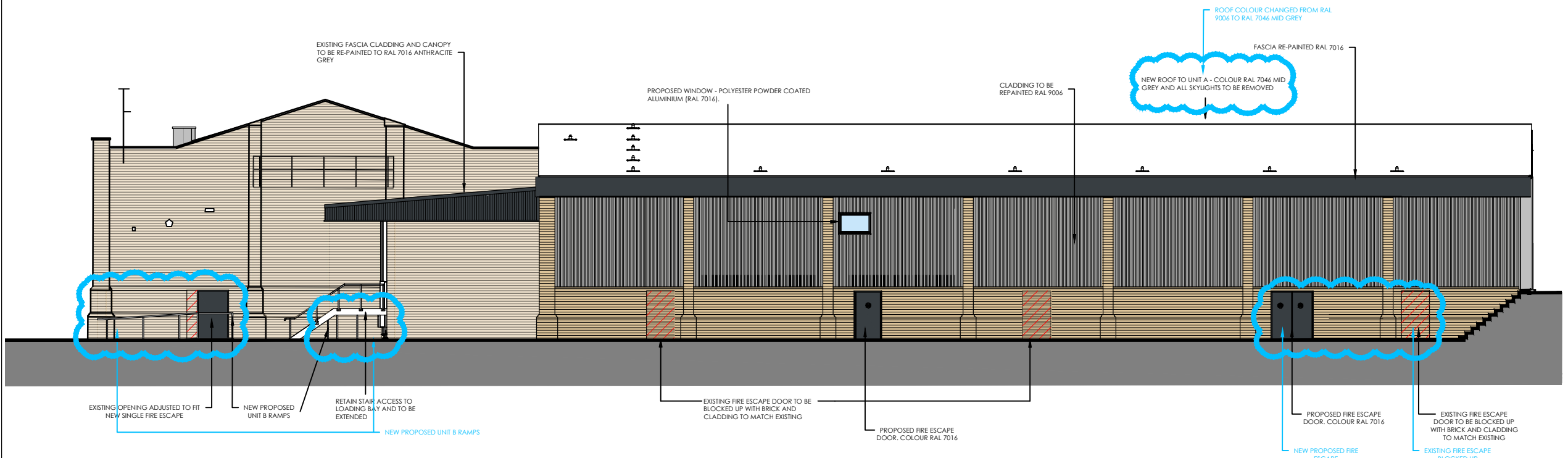
Drawn	Checked	Scale @A3	Status	Date
JT	DRW	1:200	N/A	11/23

Drawing Status	Rev.	THP Project No
PLANNING	P04	16401-1

Project No.	Originator	Volume	Level	Type	Role	Number
16401-1	THPR	XX	EL	DR	A	1012



**01 PROPOSED NORTH-EAST ELEVATION**  
1:200



**02 PROPOSED SOUTH-EAST ELEVATION**  
1:200

