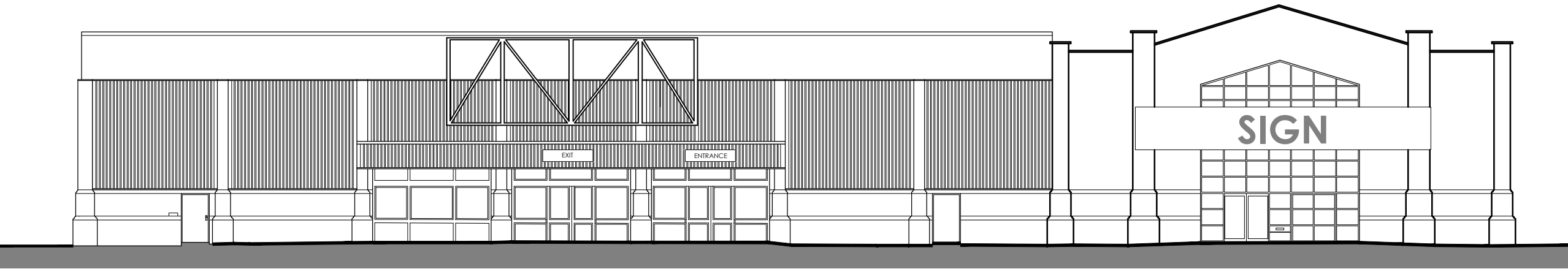
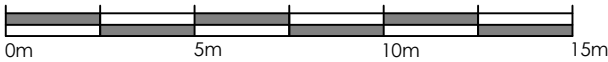


01 EXISTING SOUTH-EAST ELEVATION
1:200



02 EXISTING NORTH-WEST ELEVATION
1:200



The Harris Group Ltd does not accept liability for any deviation to our drawings or specification. This Drawing is copyright and may not be reproduced in whole or part without written authority. Do not scale off this drawing.

Rev	Date	Description	Drawn	Chk'd
-	-	-	-	-

PLANNING DRAWING

This drawing has been prepared for submission to the relevant Local Authority as part of a Planning Application. It is not intended to assist with the pricing of any elements.

For Structural details refer to the Structural & Civil Engineers detailed design drawings & specifications.

For M&E information, refer to the M&E Engineers and sub contractor's design drawings & specifications.

Do not scale from this drawing. Verify all dimensions and setting out on site. Notify any discrepancies to the architect.

For Health & Safety information, refer to the Designers Risk Assessments. This drawing is copyright and may not be reproduced in whole or part without written authority.

THE
HARRIS
PARTNERSHIP

ARCHITECTS

www.harrispartnership.com

WAKEFIELD - T. 01924 291800
2 St John's North, Wakefield, WF1 3QA

MANCHESTER - T. 0161 2388555
Carvers Warehouse, 77 Dale Street, Manchester, M1 2HG

MILTON KEYNES - T. 01908 211 577
The Old Rectory, 79 High Street, Newport Pagnell, MK16 8AB

READING - T. 0118 950 7700
101 London Road, Reading, RG1 5BT

LONDON - T. 020 7409 1215
10 Giles Court, 51 Christopher's Place, London, W1U 1JJ

Client

LEGAL & GENERAL

Project Title

PROPOSED DEVELOPMENT

HAREFIELD ROAD
UXBRIDGE
UB8 1JS

Drawing Title

EXISTING ELEVATIONS (2 OF 2)

Drawn	Checked	Scale @A3	Status	Date
JT	DRW	1:200	N/A	11/23

Drawing Status	Rev.	THP Project No
PLANNING	-	16401-1

Project No.	Originator	Volume	Level	Type	Role	Number
16401-1	THPR	XX	EL	DR	A	1002