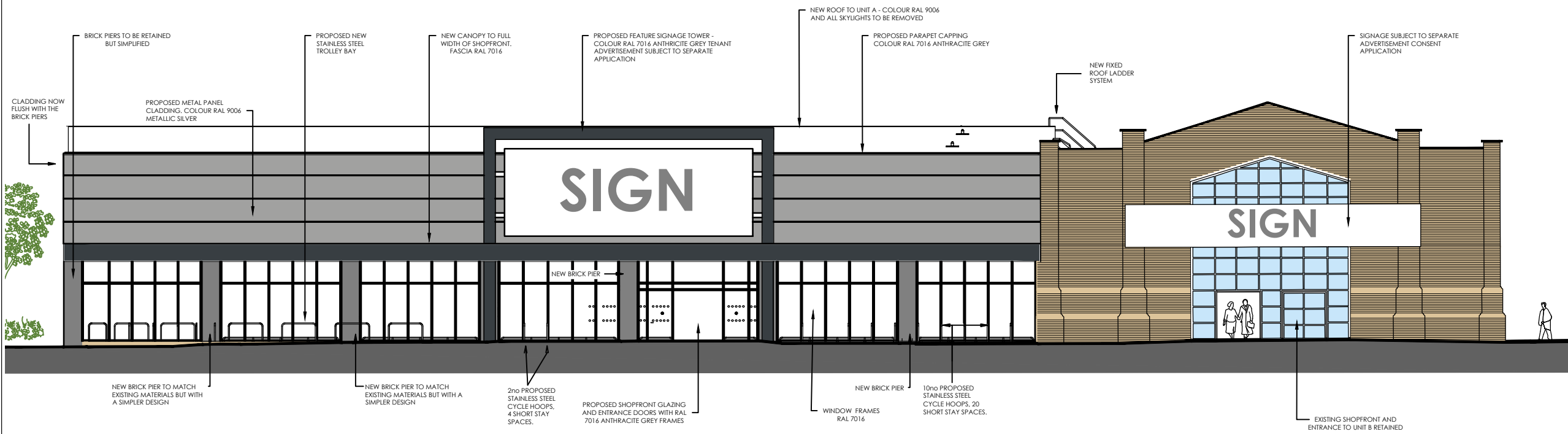


The Harris Group Ltd does not accept liability for any deviation to our drawings or specification. This Drawing is copyright and may not be reproduced in whole or part without written authority.

Rev	Date	Description	Drawn	Chkd
P01	02.07.24	Cycle hoops and clad amended	JT	DRW
P02	03.02.25	General Amendment	IMN/JT	DRW
P03	12.02.25	General Amendment	JT	DRW



01 PROPOSED NORTH-WEST ELEVATION

1:200

BASE PROPOSED DRAWINGS SHOWN AS PER APPROVED APPLICATION 16299/APP/2023/3691

ALL SIGNAGE SHOWN INDICATIVELY AND SUBJECT TO A SEPARATE ADVERTISE APPLICATION

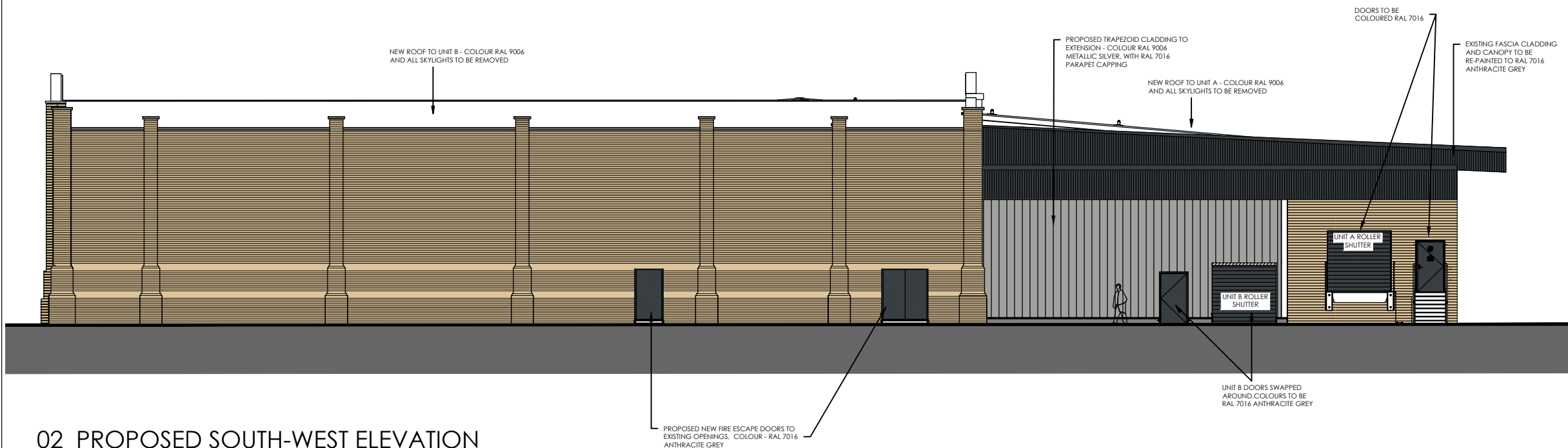
PLANNING DRAWING

This drawing has been prepared for submission to the relevant Local Authority as part of a Planning Application. It is not intended to assist with the pricing of any elements.

For Structural details refer to the Structural & Civil Engineers detailed design drawings & specifications.

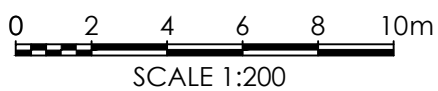
For M&E information, refer to the M&E Engineers and sub contractor's design drawings & specifications.

For Health & Safety information, refer to the Designers Risk Assessments. This drawing is copyright and may not be reproduced in whole or part without written authority.



02 PROPOSED SOUTH-WEST ELEVATION

1:200



THE HARRIS PARTNERSHIP ARCHITECTS
 www.harrispartnership.com

WAKEFIELD - T. 01924 291800
 2 St John's North, Wakefield, WF1 3GA

MANCHESTER - T. 0161 2388555
 Carvers Warehouse, 77 Dale Street, Manchester, M1 2HG

MILTON KEYNES - T. 01908 211 577
 The Old Rectory, 79 High Street, Newport Pagnell, MK16 8AB

READING - T. 0118 950 7700
 101 London Road, Reading, RG1 5BT

LONDON - T. 020 7409 1215
 10 Gress Court, St Christopher's Place, London, W1U 1JJ

Client
LEGAL & GENERAL

Project Title
PROPOSED DEVELOPMENT

**HAREFIELD ROAD
 UXBRIDGE
 UB8 1JS**

Drawing Title
PROPOSED ELEVATIONS (1 OF 2)

Drawn	Checked	Scale @A3	Status	Date
JT	DRW	1:200	N/A	11/23

Drawing Status	Rev.	THP Project No
PLANNING	P03	16401-1

Project No.	Originator	Volume	Level	Type	Role	Number
16401-1	THPR	XX	EL	DR	A	1011