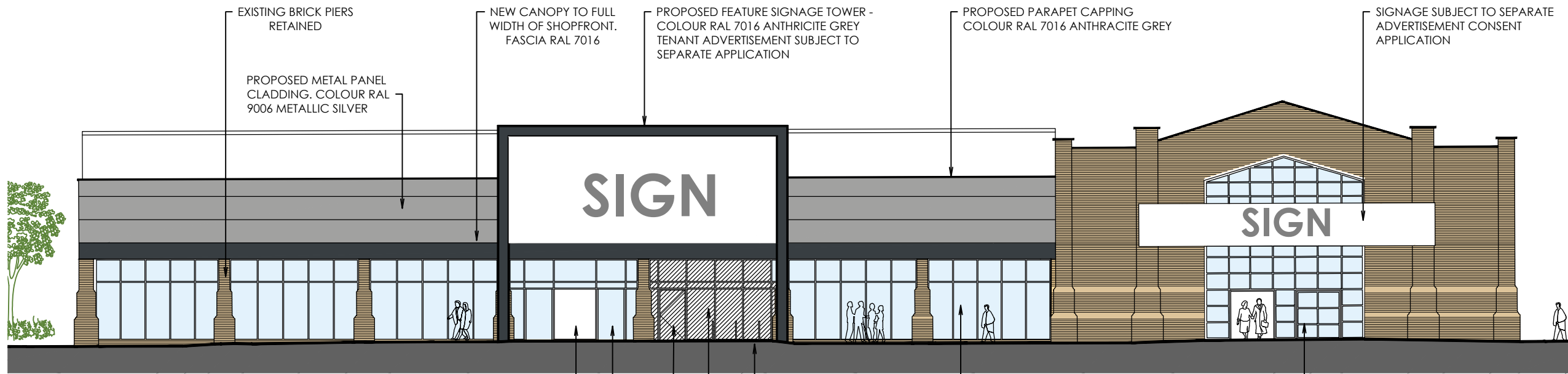
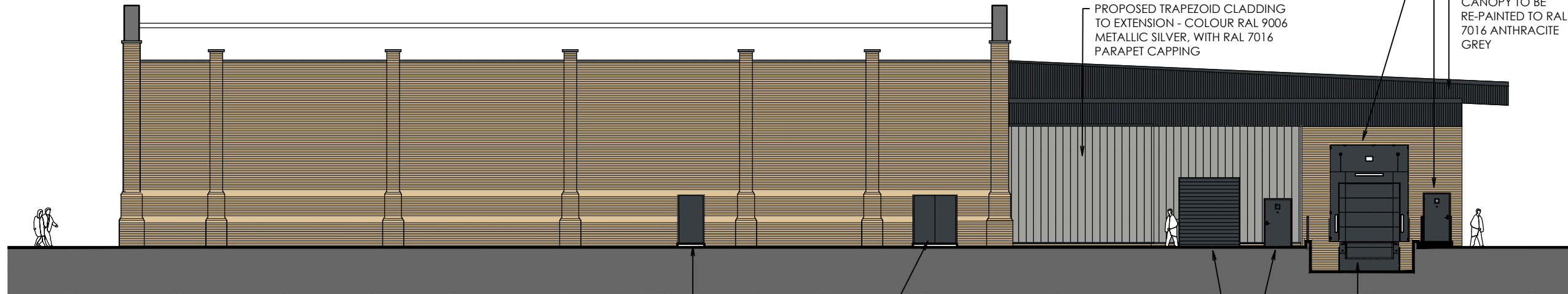


Rev	Date	Description	Drawn	Chk'd



01 PROPOSED NORTH-WEST ELEVATION  
1:200



02 PROPOSED SOUTH-WEST ELEVATION  
1:200

PLANNING DRAWING

This drawing has been prepared for submission to the relevant Local Authority as part of a Planning Application. It is not intended to assist with the pricing of any elements.

For Structural details refer to the Structural & Civil Engineers detailed design drawings & specifications.

For M&E information, refer to the M&E Engineers and sub contractor's design drawings & specifications.

Do not scale from this drawing. Verify all dimensions and setting out on site. Notify any discrepancies to the architect.

For Health & Safety information, refer to the Designers Risk Assessments. This drawing is copyright and may not be reproduced in whole or part without written authority.

**THE HARRIS PARTNERSHIP** ARCHITECTS

WAKEFIELD - T. 01924 291800  
2 St John's North, Wakefield, WF1 3GA

MANCHESTER - T. 0161 2388555  
Carvers Warehouse, 77 Dale Street, Manchester, M1 2HG

MILTON KEYNES - T. 01908 211 577  
The Old Rectory, 79 High Street, Newport Pagnell, MK16 8AB

READING - T. 0118 950 7700  
101 London Road, Reading, RG1 5BT

LONDON - T. 020 7409 1215  
10 Gless Court, St Christopher's Place, London, W1U 1JJ

www.harrispartnership.com

Client  
**LEGAL & GENERAL**

Project Title  
**PROPOSED DEVELOPMENT**

**HAREFIELD ROAD  
UXBRIDGE  
UB8 1JS**

Drawing Title  
**PROPOSED ELEVATIONS (1 OF 2)**

Drawn	Checked	Scale @A3	Status	Date
JT	DRW	1:200	N/A	11/23

Drawing Status	Rev.	THP Project No
PLANNING	-	16401-1

Project No.	Originator	Volume	Level	Type	Role	Number
16401-1	THPR	XX	EL	DR	A	1011