

NOTES

- 1. Do not scale from this drawing.
- 2. This drawing to be read & printed in colour.
- 3. This drawing is for illustrative purposes only.

KEY:

- HOARDING
- BANKSMAN

Rev	Details	REVISION HISTORY	Drawn	Checked	Date
Status:	<input type="checkbox"/> Preliminary	<input type="checkbox"/> For Approval	<input type="checkbox"/> For Construction		
	<input checked="" type="checkbox"/> For Information	<input type="checkbox"/> For Tender	<input type="checkbox"/> As Built		

Client:
Bouygues UK

Project:
Rosedale College

Drawing Title:
Construction Plan
Phase 2

Scale:
1:1250

Size:
A3

Drawn by:
HE

Checked by:
JT

Date:
28.07.2023

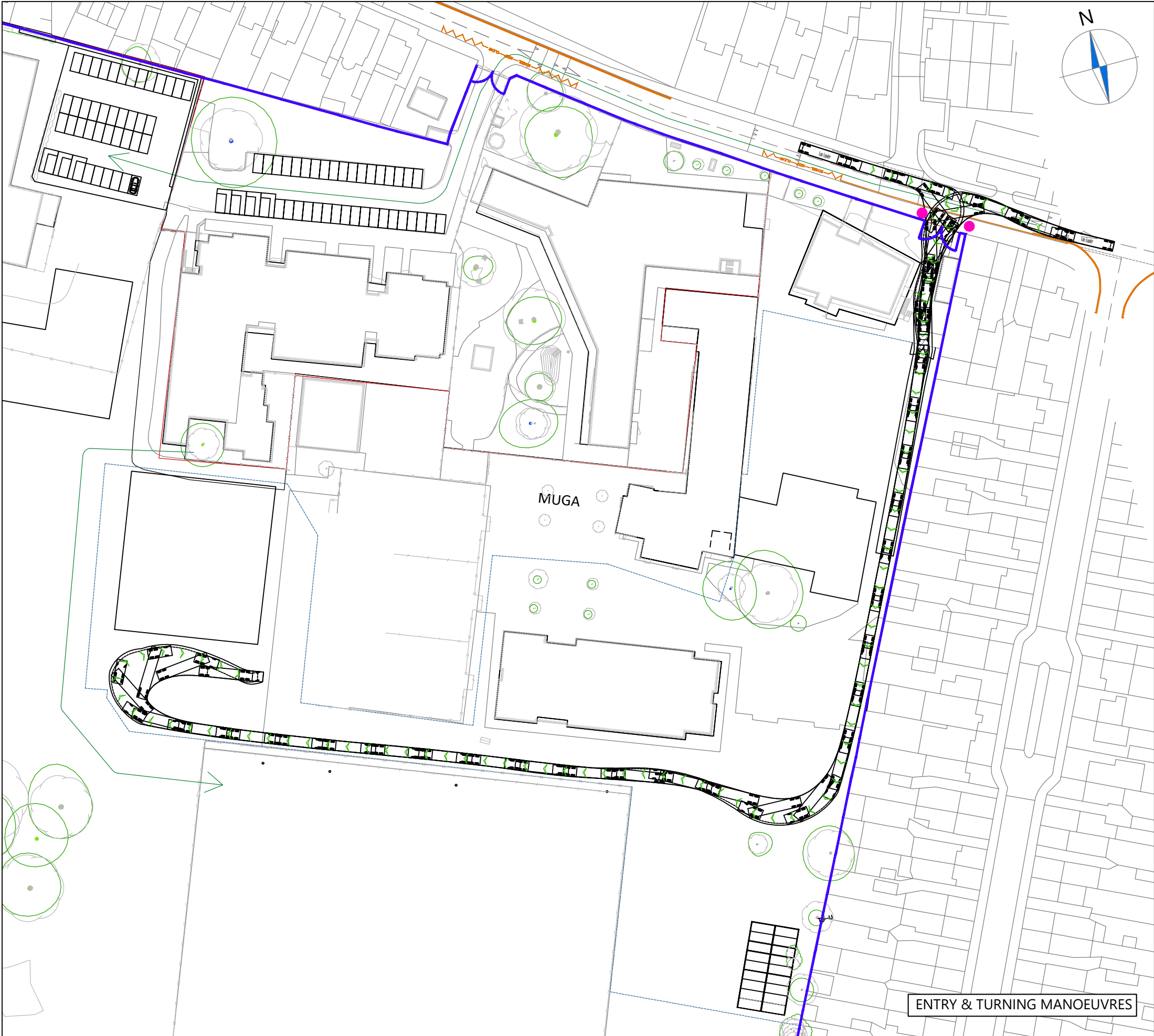
CANEPARO ASSOCIATES
Transport Planning & Highway Design
21 Little Portland Street • London • W1W 8BT • Tel. 020 3617 8200

Scheme Ref:
CA5203

Drawing No:
CT002

Sheet :
1 of 9

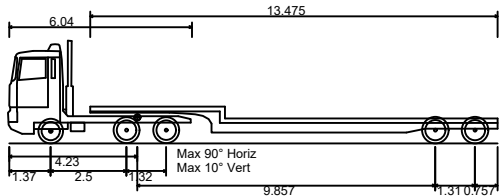
Rev:
...



NOTES

- 1. Do not scale from this drawing.
- 2. This drawing to be read & printed in colour.
- 3. This drawing is for illustrative purposes only.

LOW LOADER



Overall Length	16.154m
Overall Width	2.520m
Overall Body Height	3.393m
Min Body Ground Clearance	0.318m
Max Track Width	2.500m
Lock to Lock Time	6.00s
Kerb to Kerb Turning Radius	6.990m

 FORWARD MOVEMENTS ARE SHOWN IN BLACK (*design speed - 5kph*)

 REVERSE MOVEMENTS ARE SHOWN IN BLUE (*design speed - 2.5kph*)

Rev	Details	REVISION HISTORY	Drawn	Checked	Date
Status:	<input type="checkbox"/> Preliminary	<input type="checkbox"/> For Approval	<input type="checkbox"/> For Construction		
	<input checked="" type="checkbox"/> For Information	<input type="checkbox"/> For Tender	<input type="checkbox"/> As Built		

Client:

Bouygues UK

Project:

Rosedale College

Drawing Title:

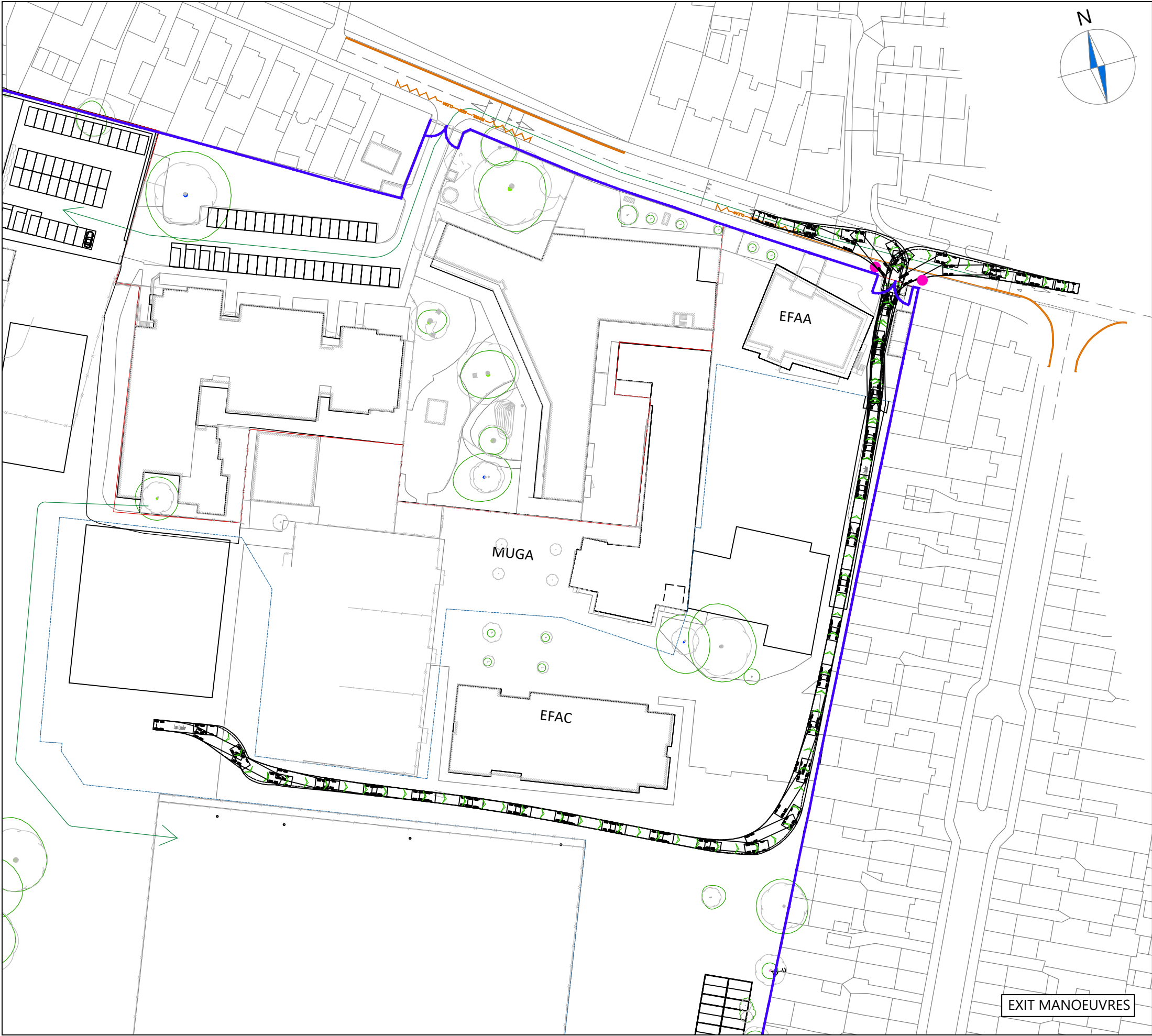
Swept Path Analysis using a
16.15m Low Loader
Phase 2

Scale: 1:1000 Size: A3

Drawn by: HE Checked by: JT Date: 28.07.2023


Transport Planning & Highway Design
21 Little Portland Street • London • W1W 8BT • Tel. 020 3617 8200

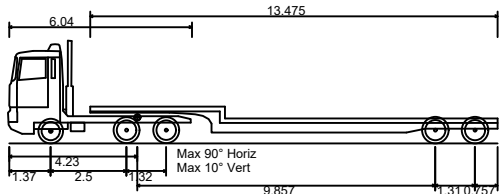
Scheme Ref:	Drawing No:	Sheet :	Rev:
CA5203	CT002	2 of 9	...



NOTES

- 1. Do not scale from this drawing.
- 2. This drawing to be read & printed in colour.
- 3. This drawing is for illustrative purposes only.

LOW LOADER



Overall Length	16.154m
Overall Width	2.520m
Overall Body Height	3.393m
Min Body Ground Clearance	0.318m
Max Track Width	2.500m
Lock to Lock Time	6.00s
Kerb to Kerb Turning Radius	6.990m

FORWARD MOVEMENTS ARE SHOWN IN BLACK (design speed - 5kph)

REVERSE MOVEMENTS ARE SHOWN IN BLUE (design speed - 2.5kph)

Rev	Details	REVISION HISTORY	Drawn	Checked	Date
Status:	<input type="checkbox"/> Preliminary	<input type="checkbox"/> For Approval	<input type="checkbox"/> For Construction		
	<input checked="" type="checkbox"/> For Information	<input type="checkbox"/> For Tender	<input type="checkbox"/> As Built		

Client:

Bouygues UK

Project:

Rosedale College

Drawing Title:

Swept Path Analysis using a 16.15m Low Loader
Phase 2

Scale:

1:1000

Size:

A3

Drawn by:

HE

Checked by:

JT

Date:

28.07.2023



Transport Planning & Highway Design

21 Little Portland Street • London • W1W 8BT • Tel. 020 3617 8200

Scheme Ref:

CA5203

Drawing No:

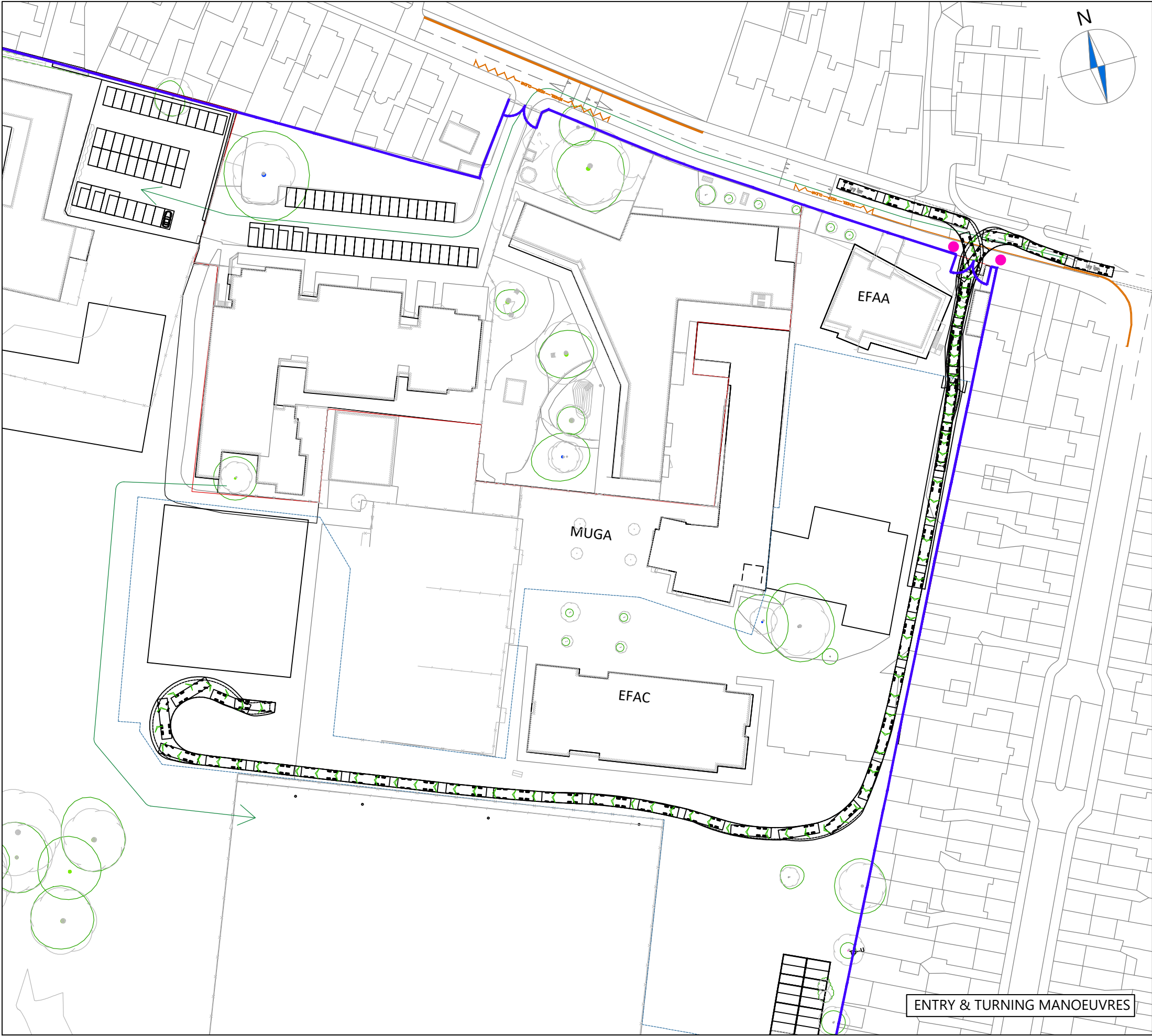
CT002

Sheet :

3 of 9

Rev:

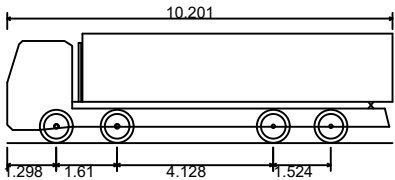
...



NOTES

- 1. Do not scale from this drawing.
- 2. This drawing to be read & printed in colour.
- 3. This drawing is for illustrative purposes only.

LARGE TIPPER



Overall Length 10.201m
Overall Width 2.495m
Overall Body Height 2.890m
Min Body Ground Clearance 0.341m
Track Width 2.471m
Lock to Lock Time 6.00s
Kerb to Kerb Turning Radius 11.550m



FORWARD MOVEMENTS ARE SHOWN
IN BLACK (*design speed - 5kph*)



REVERSE MOVEMENTS ARE SHOWN
IN BLUE (*design speed - 2.5kph*)

Rev	Details	Drawn	Checked	Date
...

REVISION HISTORY

Status:	<input type="checkbox"/> Preliminary	<input type="checkbox"/> For Approval	<input type="checkbox"/> For Construction
	<input checked="" type="checkbox"/> For Information	<input type="checkbox"/> For Tender	<input type="checkbox"/> As Built

Client:

Bouygues UK

Project:

Rosedale College

Drawing Title:

Swept Path Analysis using a
10.2m Large Tipper
Phase 2

Scale:

1:1000

Size:

A3

Drawn by:

HE

Checked by:

JT

Date:

28.07.2023



Transport Planning & Highway Design

21 Little Portland Street • London • W1W 8BT • Tel. 020 3617 8200

Scheme Ref:

CA5203

Drawing No:

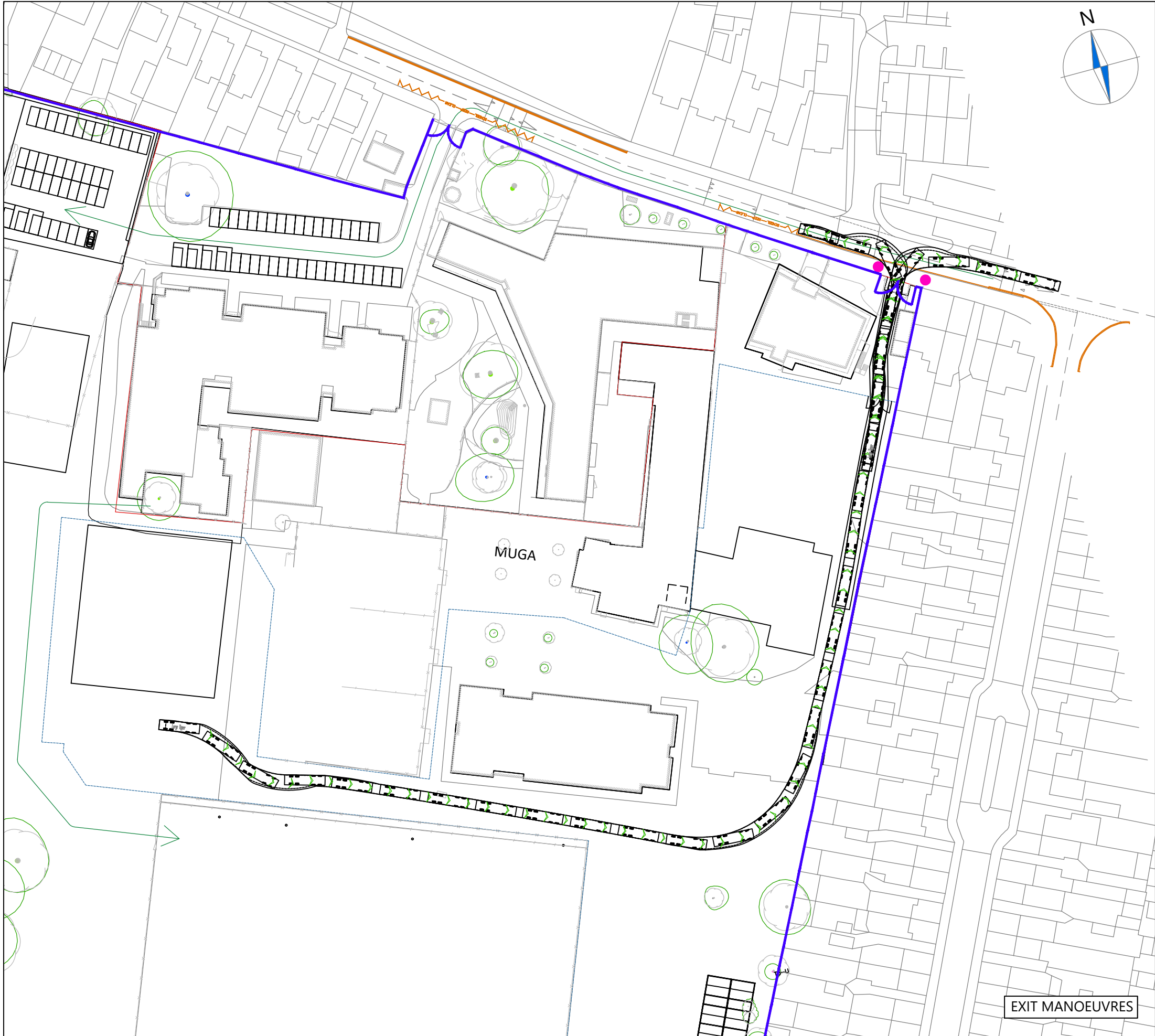
CT002

Sheet :

4 of 7

Rev:

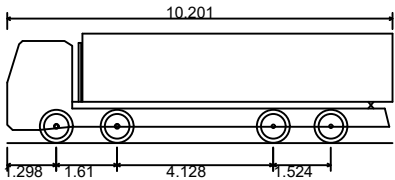
...



NOTES

- 1. Do not scale from this drawing.
- 2. This drawing to be read & printed in colour.
- 3. This drawing is for illustrative purposes only.

LARGE TIPPER



Overall Length 10.201m
Overall Width 2.495m
Overall Body Height 2.890m
Min Body Ground Clearance 0.341m
Track Width 2.471m
Lock to Lock Time 6.00s
Kerb to Kerb Turning Radius 11.550m



FORWARD MOVEMENTS ARE SHOWN
IN BLACK (*design speed - 5kph*)



REVERSE MOVEMENTS ARE SHOWN
IN BLUE (*design speed - 2.5kph*)

Rev	Details	Drawn	Checked	Date
...

REVISION HISTORY

Status: ☐ Preliminary ☐ For Approval ☐ For Construction
☒ For Information ☐ For Tender ☐ As Built

Client:

Bouygues UK

Project:

Rosedale College

Drawing Title:

Swept Path Analysis using a
10.2m Large Tipper
Phase 2

Scale: 1:1000 Size: A3

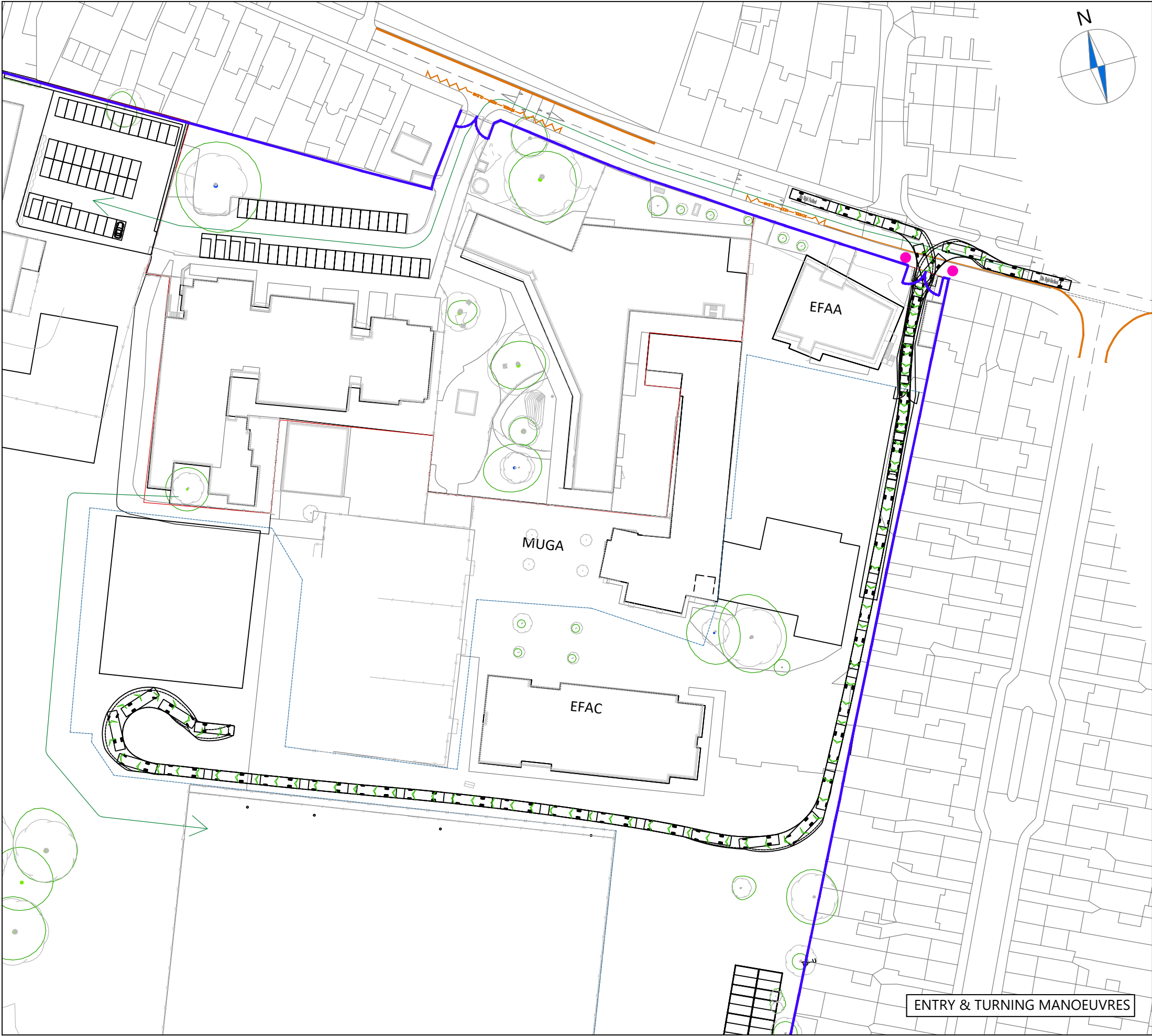
Drawn by: HE Checked by: JT Date: 28.07.2023



Transport Planning & Highway Design

21 Little Portland Street • London • W1W 8BT • Tel. 020 3617 8200

Scheme Ref: CA5203 Drawing No: CT002 Sheet: 5 of 9 Rev: ...

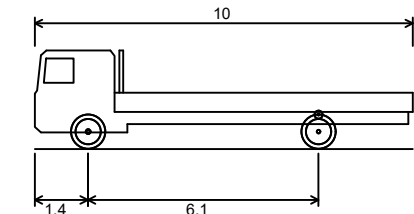


ENTRY & TURNING MANOEUVRES

NOTES

1. Do not scale from this drawing.
2. This drawing to be read & printed in colour.
3. This drawing is for illustrative purposes only.

RIGID FLATBED



Overall Length	10.000m
Overall Width	2.500m
Overall Body Height	2.602m
Min Body Ground Clearance	0.440m
Track Width	2.470m
Lock to Lock Time	3.00s
Kerb to Kerb Turning Radius	11.000m

FORWARD MOVEMENTS ARE SHOWN
IN BLACK (*design speed - 5kph*)

REVERSE MOVEMENTS ARE SHOWN
IN BLUE (*design speed - 2.5kph*)

Rev	Details	Drawn	Checked	Date
-----	---------	-------	---------	------

REVISION HISTORY				
Status:	<input type="checkbox"/> Preliminary	<input type="checkbox"/> For Approval	<input type="checkbox"/> For Construction	
	<input checked="" type="checkbox"/> For Information	<input type="checkbox"/> For Tender	<input type="checkbox"/> As Built	

Client:

Bouygues UK

Project:

Rosedale College

Drawing Title:

Swept Path Analysis using a
10m Rigid Flatbed Lorry
Phase 2

Scale: 1:1000 Size: A3

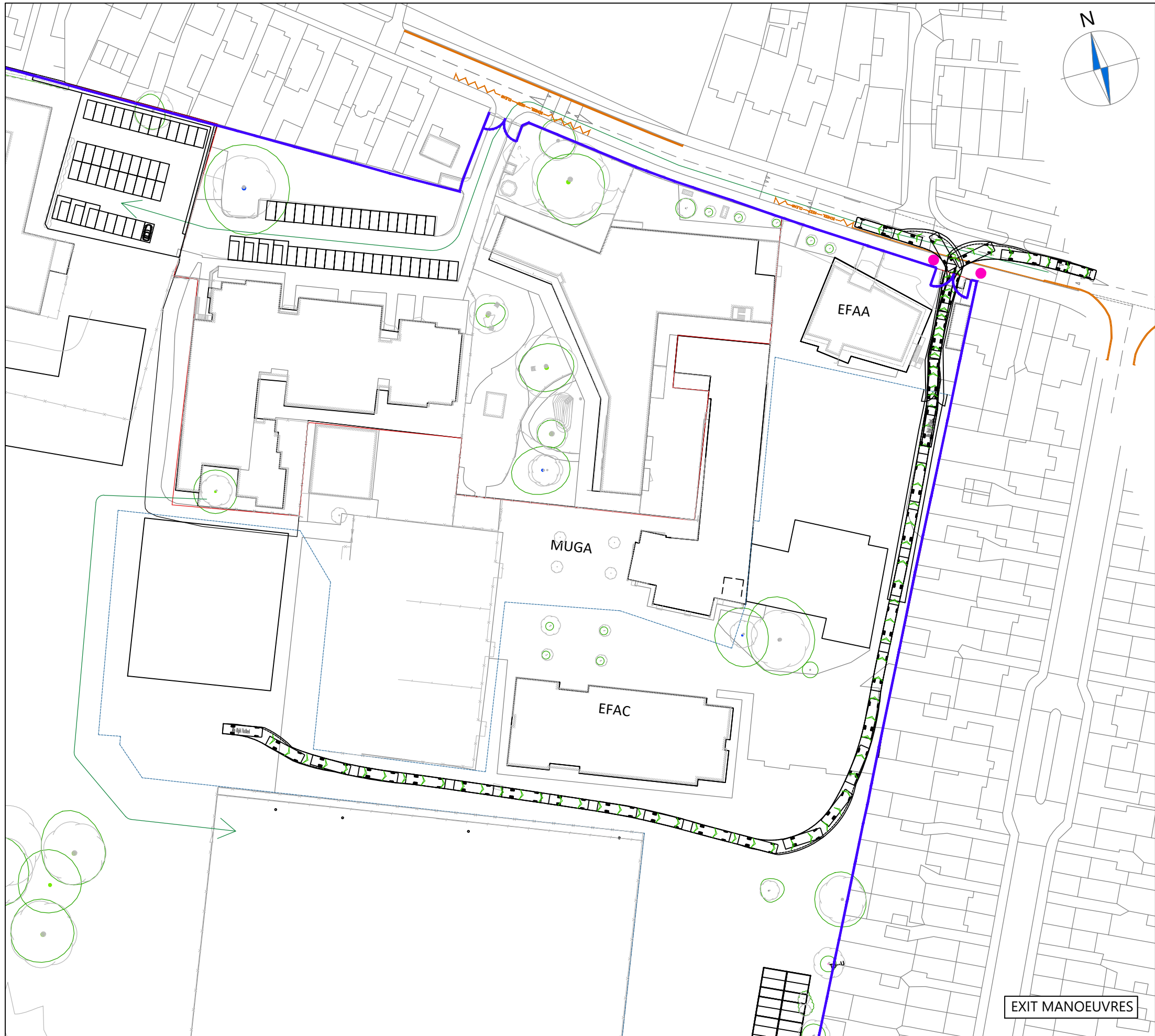
Drawn by: HE Checked by: JT Date: 28.07.2023



Transport Planning & Highway Design

21 Little Portland Street • London • W1W 8BT • Tel. 020 3617 8200

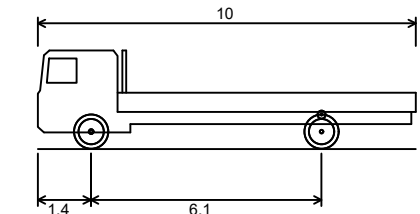
Scheme Ref:	Drawing No:	Sheet :	Rev:
CA5203	CT002	6 of 9	...



NOTES

- 1. Do not scale from this drawing.
- 2. This drawing to be read & printed in colour.
- 3. This drawing is for illustrative purposes only.

RIGID FLATBED



Overall Length	10.000m
Overall Width	2.500m
Overall Body Height	2.602m
Min Body Ground Clearance	0.440m
Track Width	2.470m
Lock to Lock Time	3.00s
Kerb to Kerb Turning Radius	11.000m

FORWARD MOVEMENTS ARE SHOWN IN BLACK (*design speed - 5kph*)

REVERSE MOVEMENTS ARE SHOWN IN BLUE (*design speed - 2.5kph*)

REVISION HISTORY

Status:	<input type="checkbox"/> Preliminary	<input type="checkbox"/> For Approval	<input type="checkbox"/> For Construction
	<input checked="" type="checkbox"/> For Information	<input type="checkbox"/> For Tender	<input type="checkbox"/> As Built

Client: Bouygues UK

Project: Rosedale College

Drawing Title: Swept Path Analysis using a 10m Rigid Flatbed Lorry Phase 2

Scale: 1:1000 Size: A3

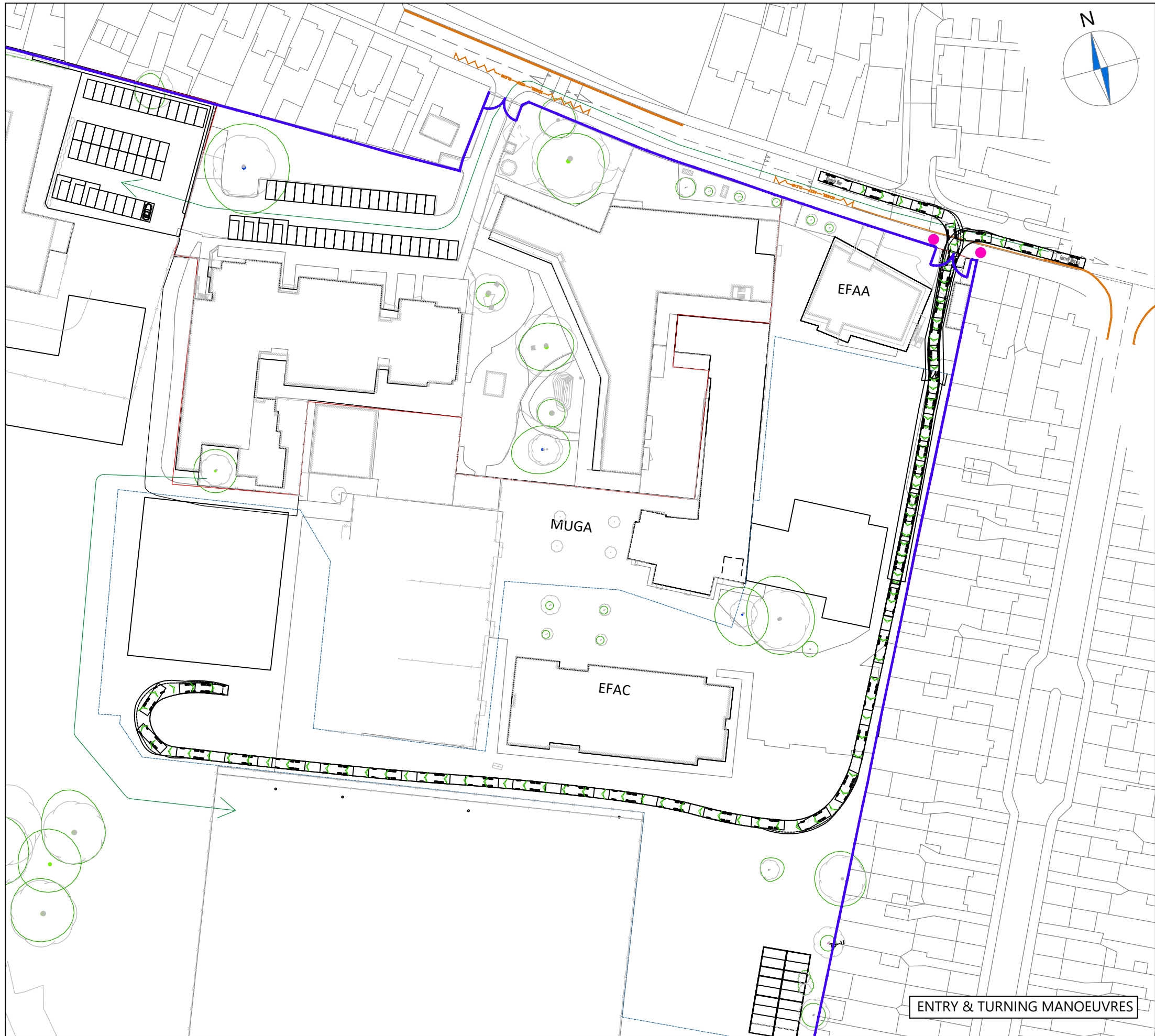
Drawn by: HE Checked by: JT Date: 28.07.2023



Transport Planning & Highway Design

21 Little Portland Street • London • W1W 8BT • Tel. 020 3617 8200

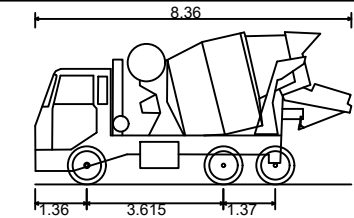
Scheme Ref:	Drawing No:	Sheet :	Rev:
CA5203	CT002	7 of 9	...



NOTES

- 1. Do not scale from this drawing.
- 2. This drawing to be read & printed in colour.
- 3. This drawing is for illustrative purposes only.

CONCRETE MIXER



Overall Length	8.360m
Overall Width	2.390m
Overall Body Height	4.027m
Min Body Ground Clearance	0.358m
Max Track Width	2.413m
Lock to Lock Time	6.00s
Kerb to Kerb Turning Radius	8.210m

	FORWARD MOVEMENTS ARE SHOWN IN BLACK (design speed - 5kph)
	REVERSE MOVEMENTS ARE SHOWN IN BLUE (design speed - 2.5kph)

Rev	Details	REVISION HISTORY	Drawn	Checked	Date
		Status:			
		<input type="checkbox"/> Preliminary	<input type="checkbox"/> For Approval	<input type="checkbox"/> For Construction	
		<input checked="" type="checkbox"/> For Information	<input type="checkbox"/> For Tender	<input type="checkbox"/> As Built	

Client:

Bouygues UK

Project:

Rosedale College

Drawing Title:

Swept Path Analysis using an 8.36m Concrete Mixer
Phase 2

Scale:	1:1000	Size:	A3
--------	--------	-------	----

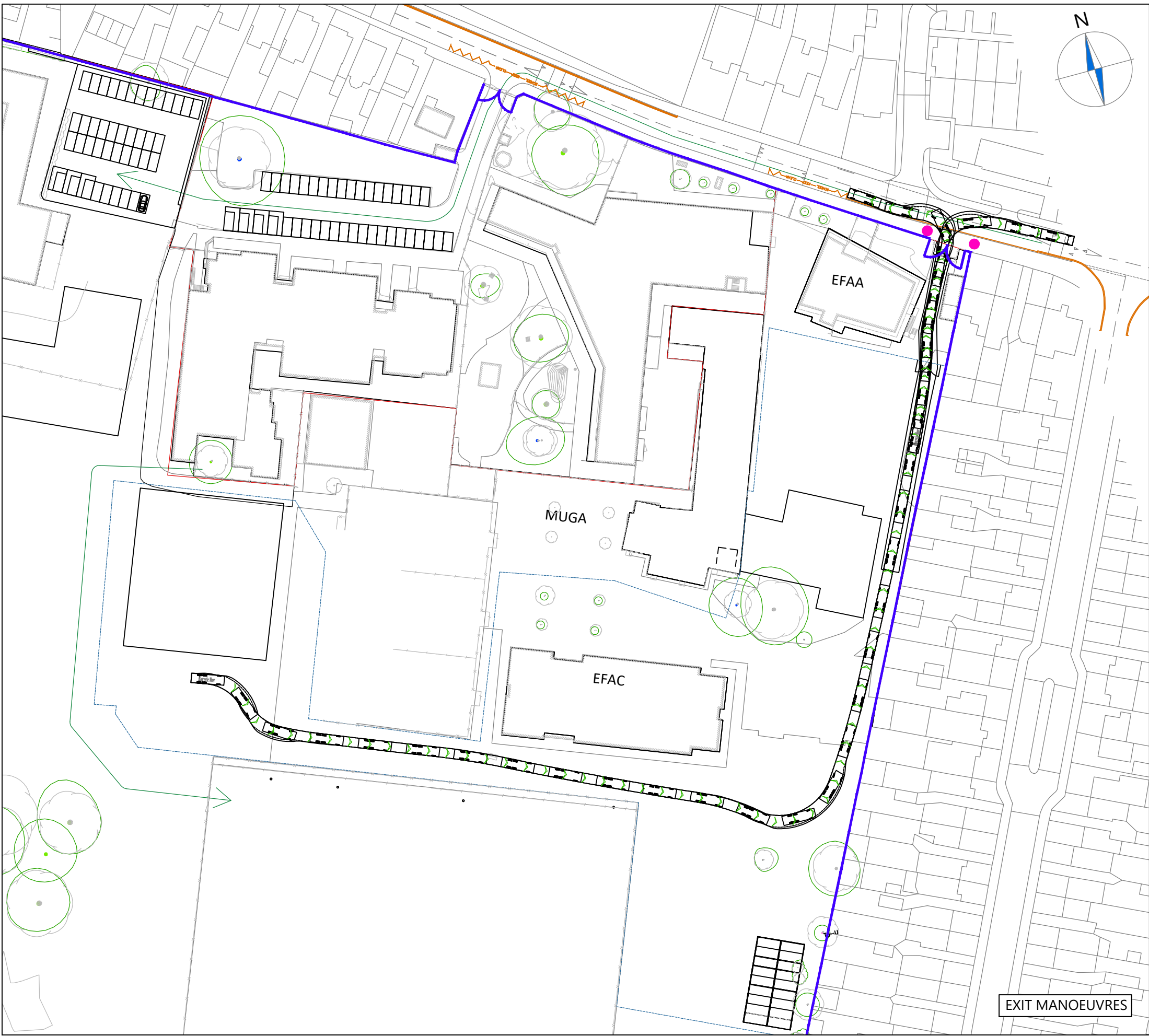
Drawn by:	Checked by:	Date:
HE	JT	28.07.2023



Transport Planning & Highway Design

21 Little Portland Street • London • W1W 8BT • Tel. 020 3617 8200

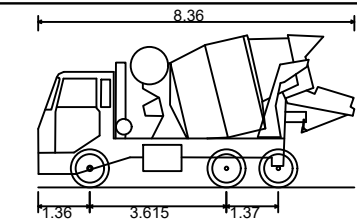
Scheme Ref:	Drawing No:	Sheet :	Rev:
CA5203	CT002	8 of 9	...



NOTES

- 1. Do not scale from this drawing.
- 2. This drawing to be read & printed in colour.
- 3. This drawing is for illustrative purposes only.

CONCRETE MIXER



Overall Length	8.360m
Overall Width	2.390m
Overall Body Height	4.027m
Min Body Ground Clearance	0.358m
Max Track Width	2.413m
Lock to Lock Time	6.00s
Kerb to Kerb Turning Radius	8.210m

	FORWARD MOVEMENTS ARE SHOWN IN BLACK (<i>design speed - 5kph</i>)
	REVERSE MOVEMENTS ARE SHOWN IN BLUE (<i>design speed - 2.5kph</i>)

Rev	Details	REVISION HISTORY	Drawn	Checked	Date
Status:	<input type="checkbox"/> Preliminary	<input type="checkbox"/> For Approval	<input type="checkbox"/> For Construction		
	<input checked="" type="checkbox"/> For Information	<input type="checkbox"/> For Tender	<input type="checkbox"/> As Built		

Client:

Bouygues UK

Project:

Rosedale College

Drawing Title:

Swept Path Analysis using an 8.36m Concrete Mixer
Phase 2

Scale: 1:1000 Size: A3

Drawn by: HE Checked by: JT Date: 28.07.2023

CANEPARO ASSOCIATES
Transport Planning & Highway Design
21 Little Portland Street • London • W1W 8BT • Tel. 020 3617 8200

Scheme Ref:	Drawing No:	Sheet :	Rev:
CA5203	CT002	9 of 9	...