

# 01 Proposed Lower Ground Floor Plan

1:200@A3



Papa Architects Ltd.  
222 Archway Road, Highgate,  
London N6 5AX  
Phone. +44(0)20 8348 8411  
Fax. +44 (0)20 8348 7411  
www.papaarchitects.co.uk

Client

Address  
163 High Street  
Yiewsley  
West Drayton  
London  
UB7 7QH

Drawing title  
Proposed Lower Ground Floor  
Plan

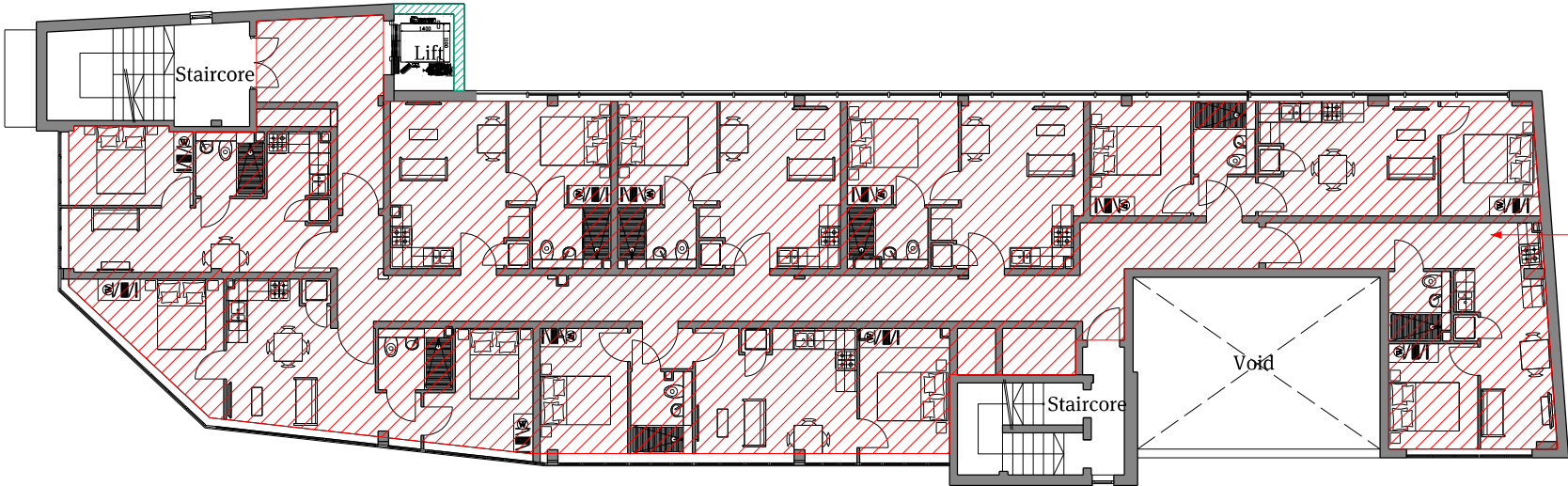
Project No. Date  
2019 July 20  
Drawing No.  
00-200

Scale  
1:200 @ A3  
Current Rev  
P02

| Rev | Date     | Reason For Issue | Chk |
|-----|----------|------------------|-----|
| P01 | 04.08.20 | Submission       | DY  |
| P02 | 12.02.21 | Submission       | DY  |
|     |          |                  |     |
|     |          |                  |     |
|     |          |                  |     |

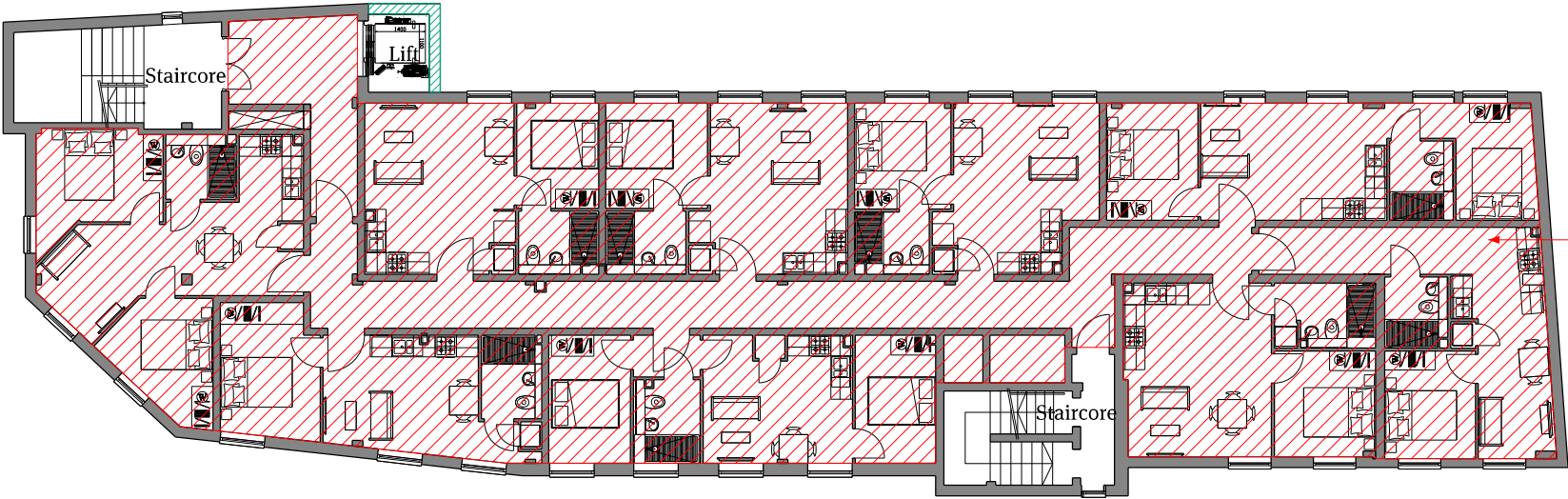
0 2 4 6 m

Notes  
All dimensions must be checked and Papa Architects are to be informed of any discrepancies prior to construction. Any DWG's issued by PAPA architects are to be read in conjunction with the associated PDF versions. This drawing and any of the details therein remain the copyright of Papa Architects Ltd. All drawings prepared by Papa Architects are not to be used for any submissions, area schedule calculations or used by any other Persons or Companies other than Papa Architects Ltd unless written consent has been given by Papa Architects Ltd.



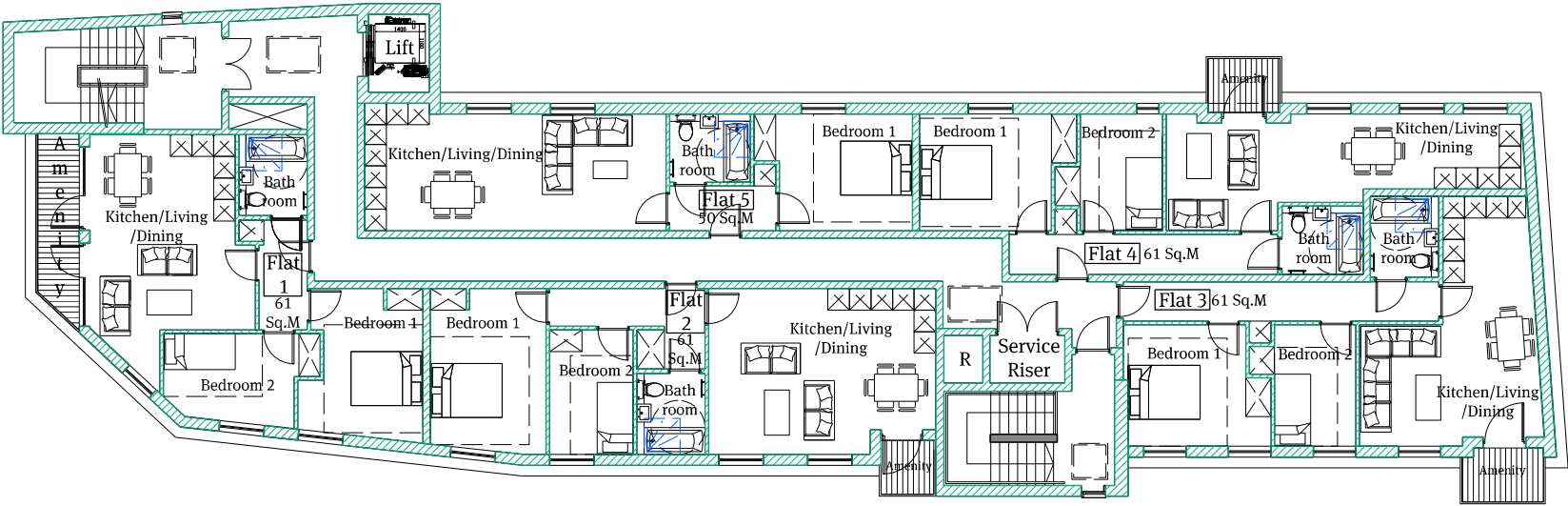
Existing Upper Ground Floor Plan  
- Flats in occupation.  
  
Area not apart of application

01 Proposed Upper Ground Floor Plan  
1:200@A3

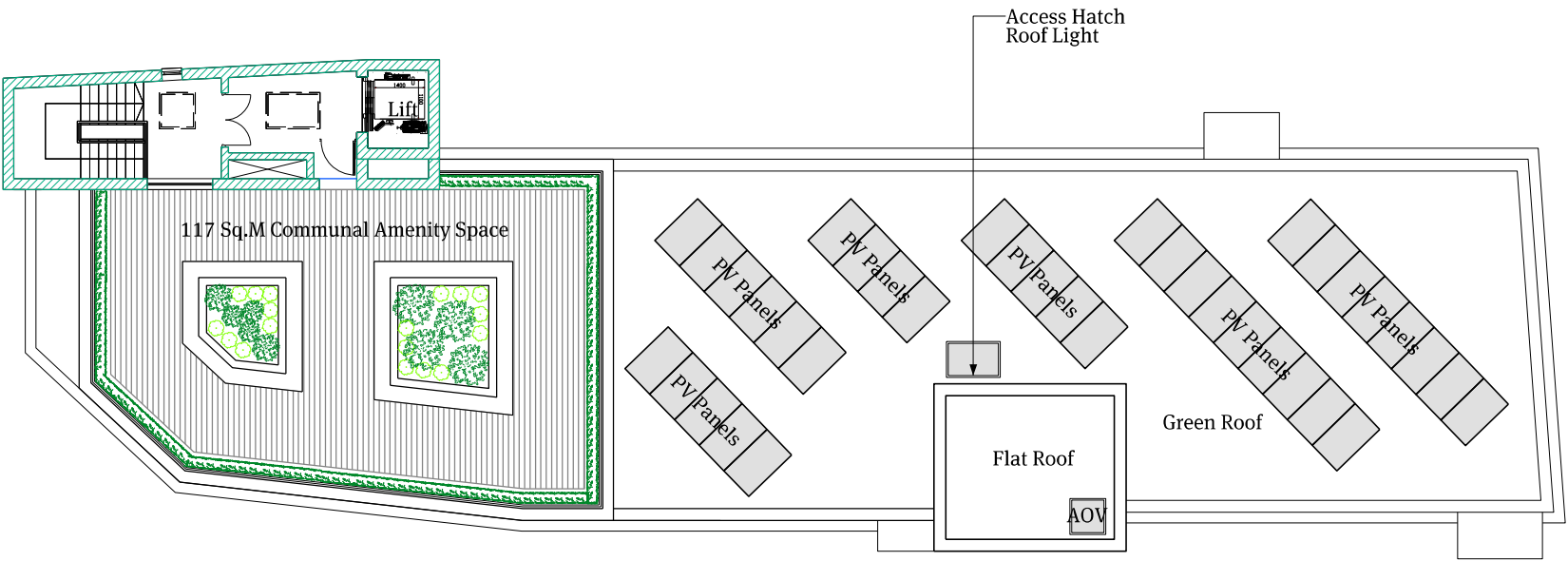


Existing First Floor Plan - Flats in occupation.  
Area not apart of application

01 Proposed First Floor Plan  
1:200@A3



01 Proposed Second Floor Plan  
1:200@A3



01 Proposed Third Floor Plan  
1:200@A3

PAPA

Papa Architects Ltd.  
222 Archway Road, Highgate,  
London N6 5AX  
Phone. +44(0)20 8348 8411  
Fax. +44 (0)20 8348 7411  
www.papaarchitects.co.uk

Client

Address  
163 High Street  
Yiewsley  
West Drayton  
London  
UB7 7QH

Drawing title  
Proposed Third Floor Plan

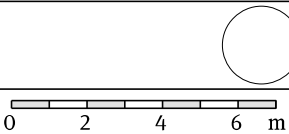
Project No. Date  
2019 July 20

Scale  
1:200 @ A3

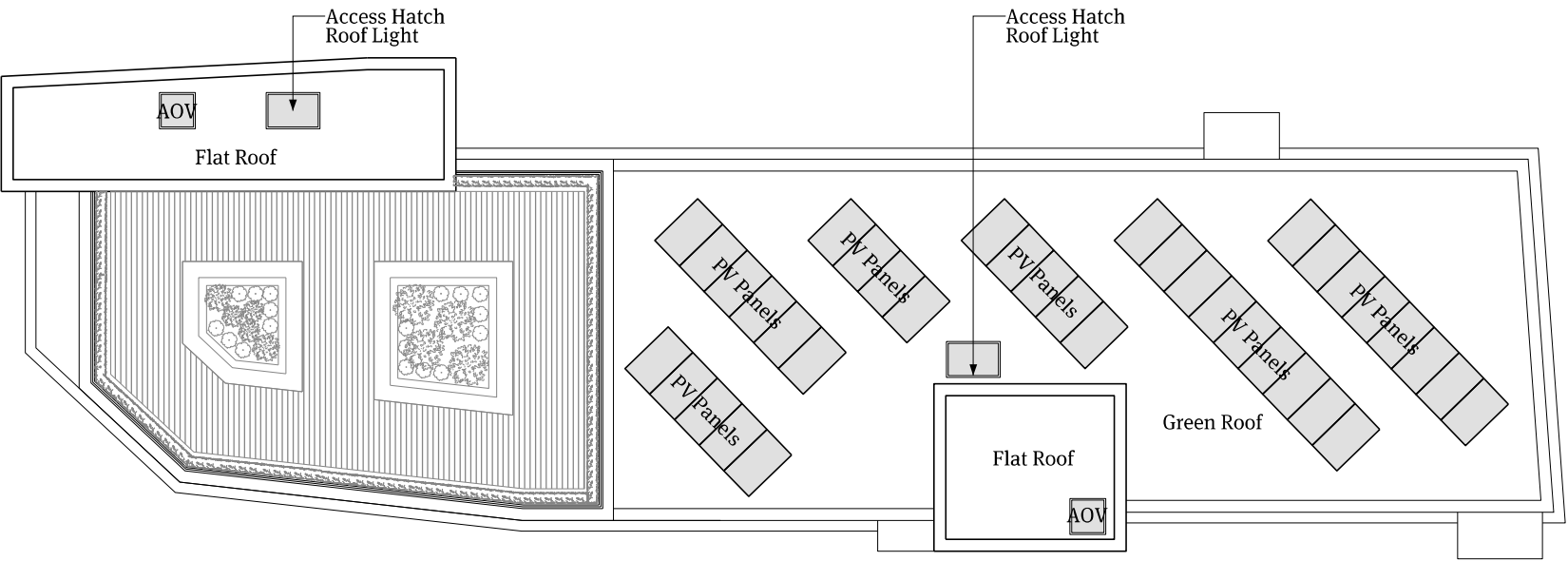
Drawing No.  
00-204

Current Rev  
P02

| Rev | Date     | Reason For Issue | Chk |
|-----|----------|------------------|-----|
| P01 | 04.08.20 | Submission       | DY  |
| P02 | 12.02.21 | Submission       | DY  |
|     |          |                  |     |
|     |          |                  |     |
|     |          |                  |     |



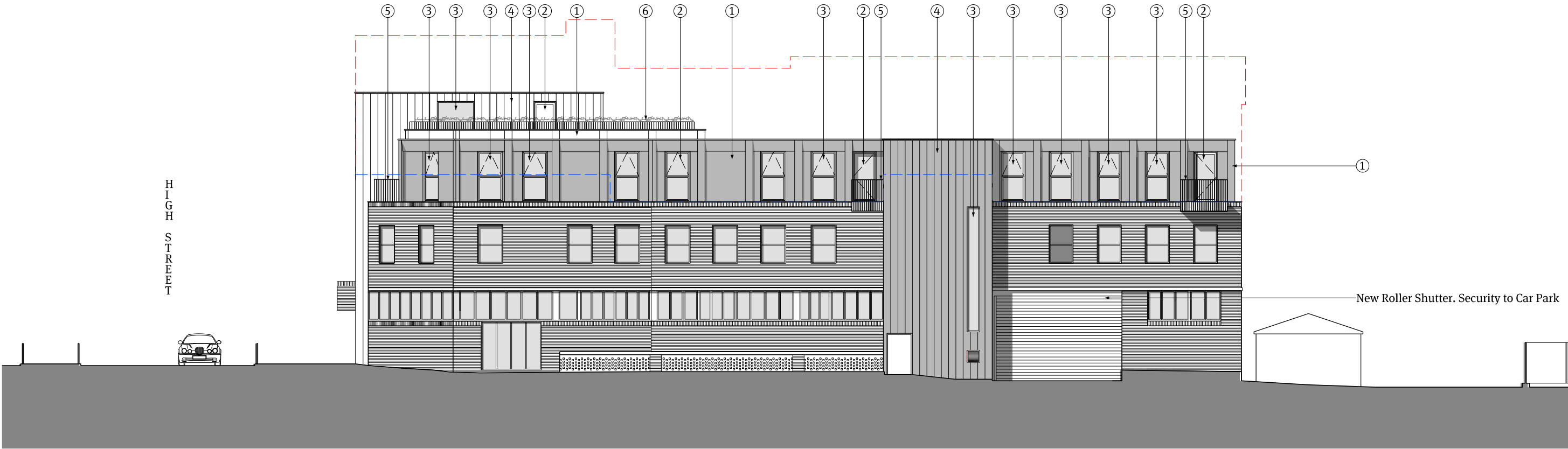
Notes  
All dimensions must be checked and Papa Architects are to be informed of any discrepancies prior to construction. Any DWG's issued by PAPA architects are to be read in conjunction with the associated PDF versions. This drawing and any of the details therein remain the copyright of Papa Architects Ltd. All drawings prepared by Papa Architects are not to be used for any submissions, area schedule calculations or used by any other Persons or Companies other than Papa Architects Ltd unless written consent has been given by Papa Architects Ltd.



01 Proposed Roof Plan  
1:200@A3

| Legend                 |  |
|------------------------|--|
| <div><div></div></div> | Building Height Proposed Through Appeal Refused Application 15348/APP/2015/934 |
| <div><div></div></div> | Existing Building Height   |

- ① Aluminium Cladding
- ② Aluminium Framed Windows & Doors
- ③ Aluminium Framed Windows
- ④ Aluminium Cladding to match mansard to clad existing staircore
- ⑤ Steel Balstrading
- ⑥ Soft Landscaping

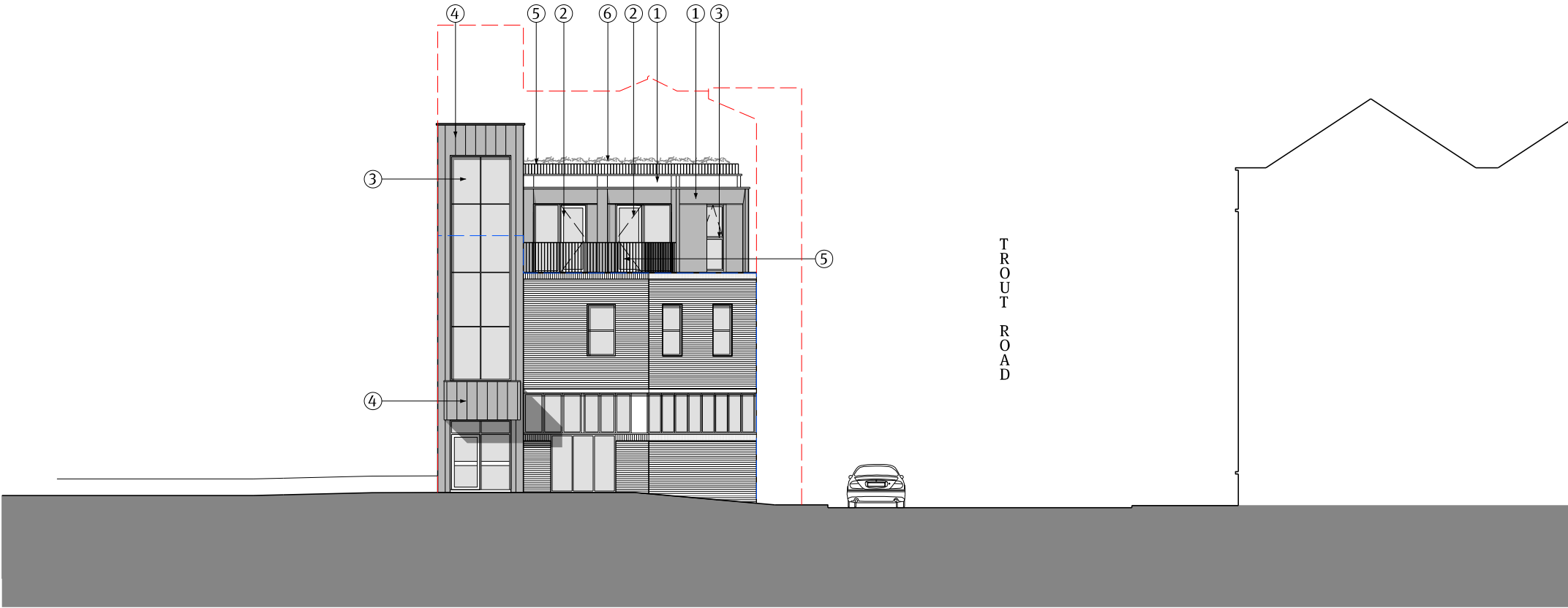


01 Proposed South East Elevation  
1:200@A3

|   |        |   |  |                       |         |                    |     |          |                  |     |  |  |
|---|--------|---|--|-----------------------|---------|--------------------|-----|----------|------------------|-----|--|--|
| <div><div>PAPA</div><div>Papa Architects Ltd.<br/>222 Archway Road, Highgate,<br/>London N6 5AX<br/>Phone. +44(0)20 8348 8411<br/>Fax. +44 (0)20 8348 7411<br/>www.papaarchitects.co.uk</div></div> | Client | Address<br>163 High Street<br>Yiewsley<br>West Drayton<br>London<br>UB7 7QH | Drawing title<br>Proposed South East Elevation | Project No.           | Date    | Scale              | Rev | Date     | Reason For Issue | Chk | <div><div></div><div>0246m</div></div> | <div>Notes<br/>All dimensions must be checked and Papa Architects are to be informed of any discrepancies prior to construction. Any DWG's issued by PAPA architects are to be read in conjunction with the associated PDF versions. This drawing and any of the details therein remain the copyright of Papa Architects Ltd. All drawings prepared by Papa Architects are not to be used for any submissions, area schedule calculations or used by any other Persons or Companies other than Papa Architects Ltd unless written consent has been given by Papa Architects Ltd.</div> |
|   |        |   |  | 2019                  | July 20 | 1:200 @ A3         | P01 | 04.08.20 | Submission       | DY  |  |  |
|   |        |   |  | Drawing No.<br>00-210 |         | Current Rev<br>P02 | P02 | 12.02.21 | Submission       | DY  |  |  |

| Legend                 |  |
|------------------------|--|
| <div><div></div></div> | Building Height Proposed Through Appeal Refused Application 15348/APP/2015/934 |
| <div><div></div></div> | Existing Building Height   |

- ① Aluminium Cladding
- ② Aluminium Framed Windows & Doors
- ③ Aluminium Framed Windows
- ④ Aluminium Cladding to match mansard to clad existing staircore
- ⑤ Steel Balstrading
- ⑥ Soft Landscaping



01 Proposed South West Elevation

1:200@A3

PAPA

Papa Architects Ltd.  
222 Archway Road, Highgate,  
London N6 5AX  
Phone. +44(0)20 8348 8411  
Fax. +44 (0)20 8348 7411  
www.papaarchitects.co.uk

Client

Address  
163 High Street  
Yiewsley  
West Drayton  
London  
UB7 7QH

Drawing title  
Proposed South West Elevation

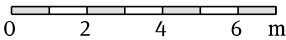
Project No. Date  
2019 July 20

Scale  
1:200 @ A3

Drawing No.  
00-211

Current Rev  
P02

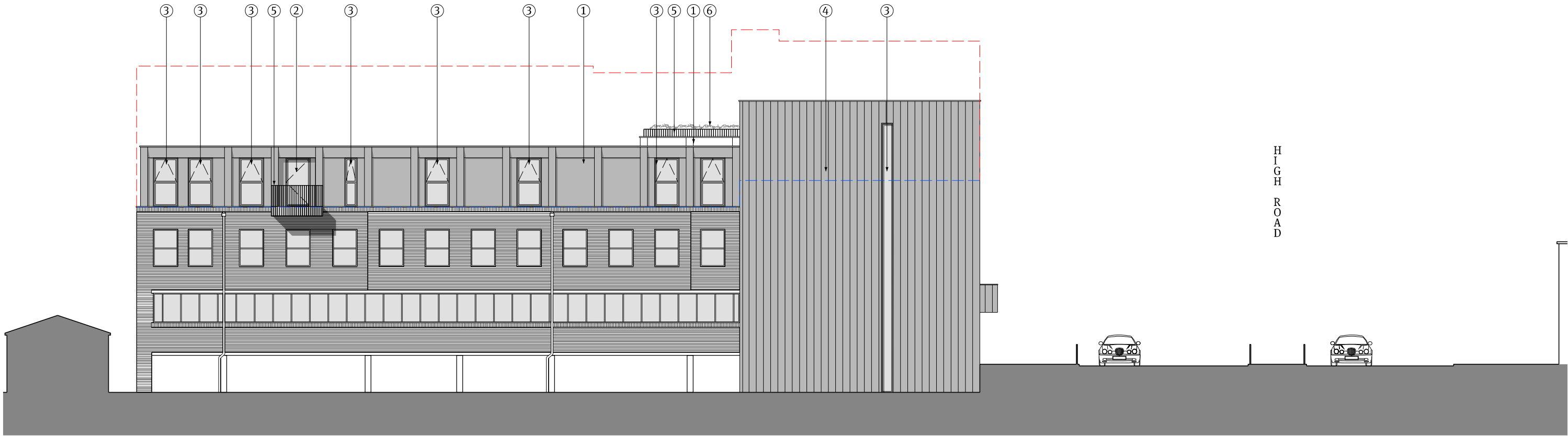
| Rev | Date     | Reason For Issue | Chk |
|-----|----------|------------------|-----|
| P01 | 04.08.20 | Submission       | DY  |
| P02 | 12.02.21 | Submission       | DY  |
|     |          |                  |     |
|     |          |                  |     |
|     |          |                  |     |



Notes  
All dimensions must be checked and Papa Architects are to be informed of any discrepancies prior to construction. Any DWG's issued by PAPA architects are to be read in conjunction with the associated PDF versions. This drawing and any of the details therein remain the copyright of Papa Architects Ltd. All drawings prepared by Papa Architects are not to be used for any submissions, area schedule calculations or used by any other Persons or Companies other than Papa Architects Ltd unless written consent has been given by Papa Architects Ltd.

| Legend                 |  |
|------------------------|--|
| <div><div></div></div> | Building Height Proposed Through Appeal Refused Application 15348/APP/2015/934 |
| <div><div></div></div> | Existing Building Height   |

- ① Aluminium Cladding
- ② Aluminium Framed Windows & Doors
- ③ Aluminium Framed Windows
- ④ Aluminium Cladding to match mansard to clad existing staircore
- ⑤ Steel Balstrading
- ⑥ Soft Landscaping



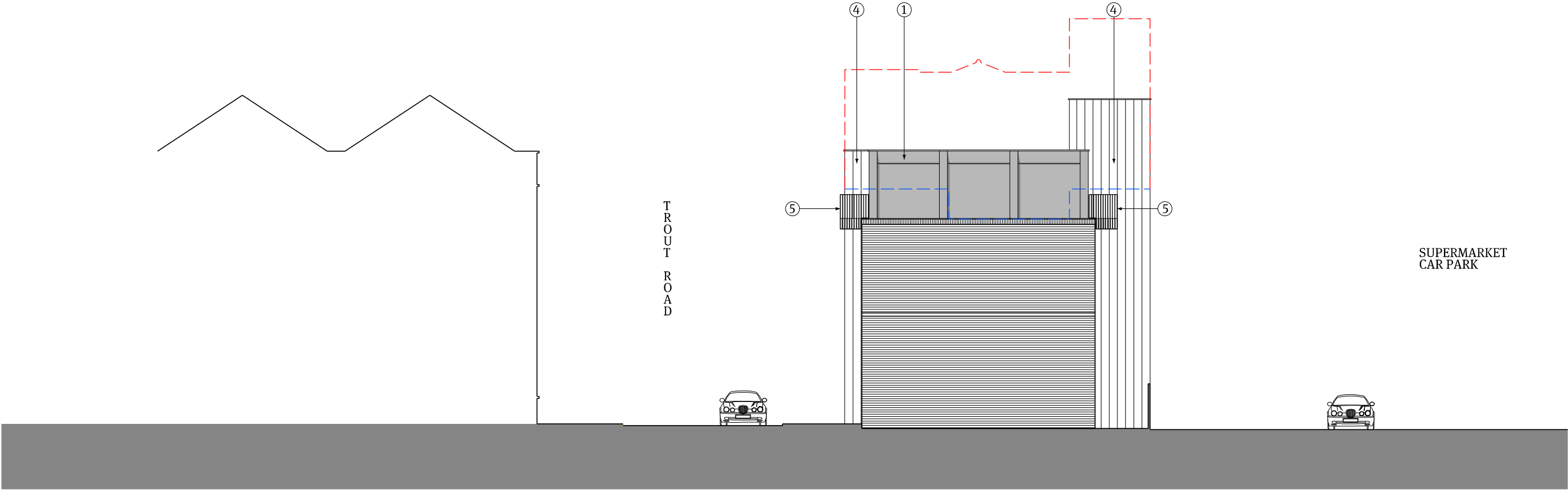
01 Proposed North West Elevation

1:200@A3



| Legend                 |  |
|------------------------|--|
| <div><div></div></div> | Building Height Proposed Through Appeal Refused Application 15348/APP/2015/934 |
| <div><div></div></div> | Existing Building Height   |

- ① Aluminium Cladding
- ② Aluminium Framed Windows & Doors
- ③ Aluminium Framed Windows
- ④ Aluminium Cladding to match mansard to clad existing staircore
- ⑤ Steel Balstrading
- ⑥ Soft Landscaping



01 Proposed North East Elevation  
1:200@A3