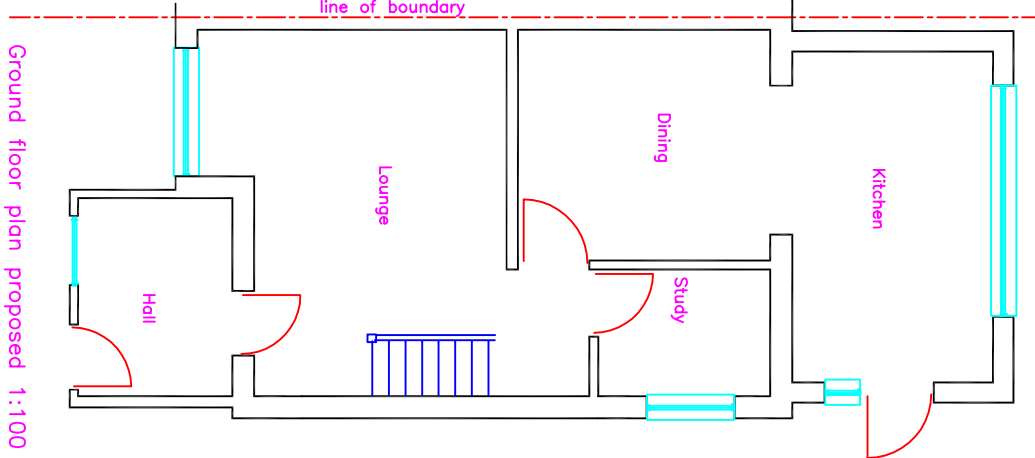
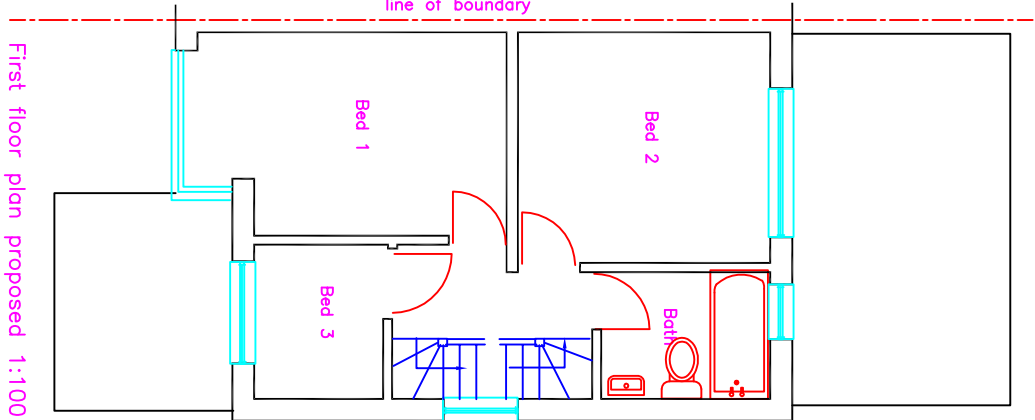
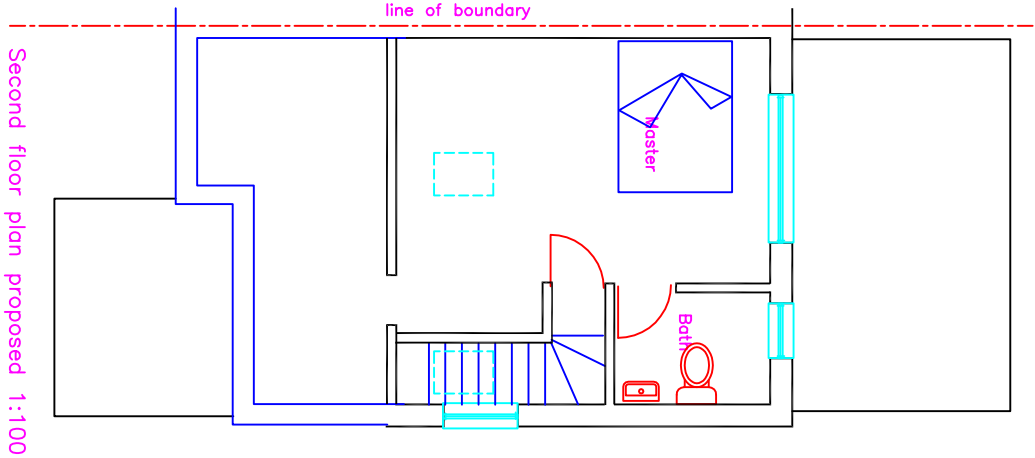


Rev C July 23- window added
Rev B July 23- window amended
Rev A July 23- annotation added
FOR PLANNING PURPOSES ONLY

ADDRESS 29 Blossom Way Hillingdon UB10 9LN		
DRAWING TITLE Plans / elevations proposed		
PROPOSAL New dormer window		
SCALE 1:100	DATE May 23	REV C
DRAWING NUMBER L.02		

Volume calculations		
Volume of hip to gable = $\frac{(D \times H \times W)}{6}$		
$\frac{3.791 \times 2.642 \times 7.39}{6}$	\times	$\frac{6}{6}$
		= 12.34M/3
Volume of dormer= $\frac{\text{depth} \times \text{height}}{2} \times \text{width}$		
$\frac{3.6 \times 2.448}{2}$	\times	$\frac{4.944}{6}$
		= 21.8 M/3
Volume added to loft space= 34.2 M/3 Therefore scheme within GPDO		



line of boundary