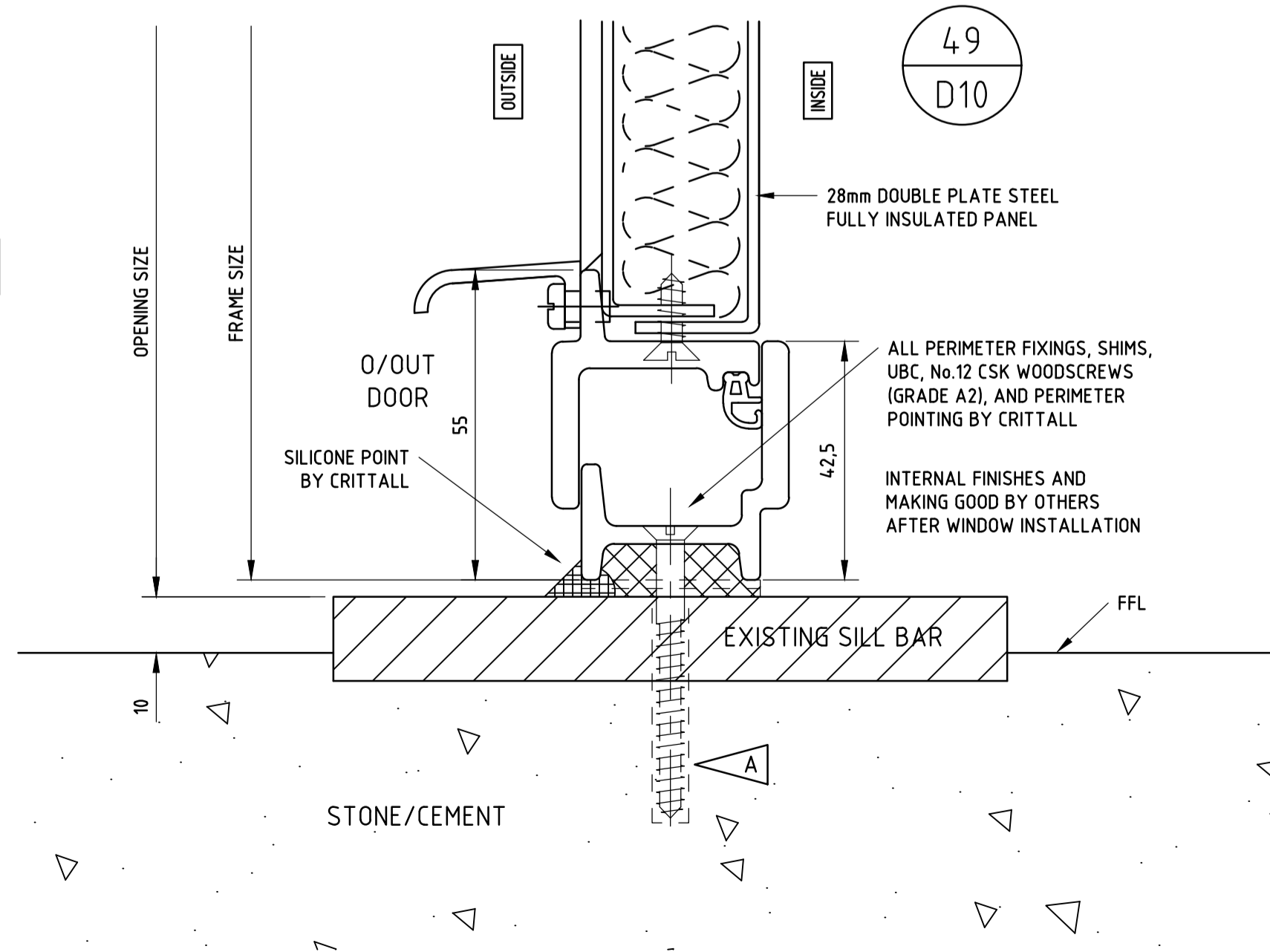
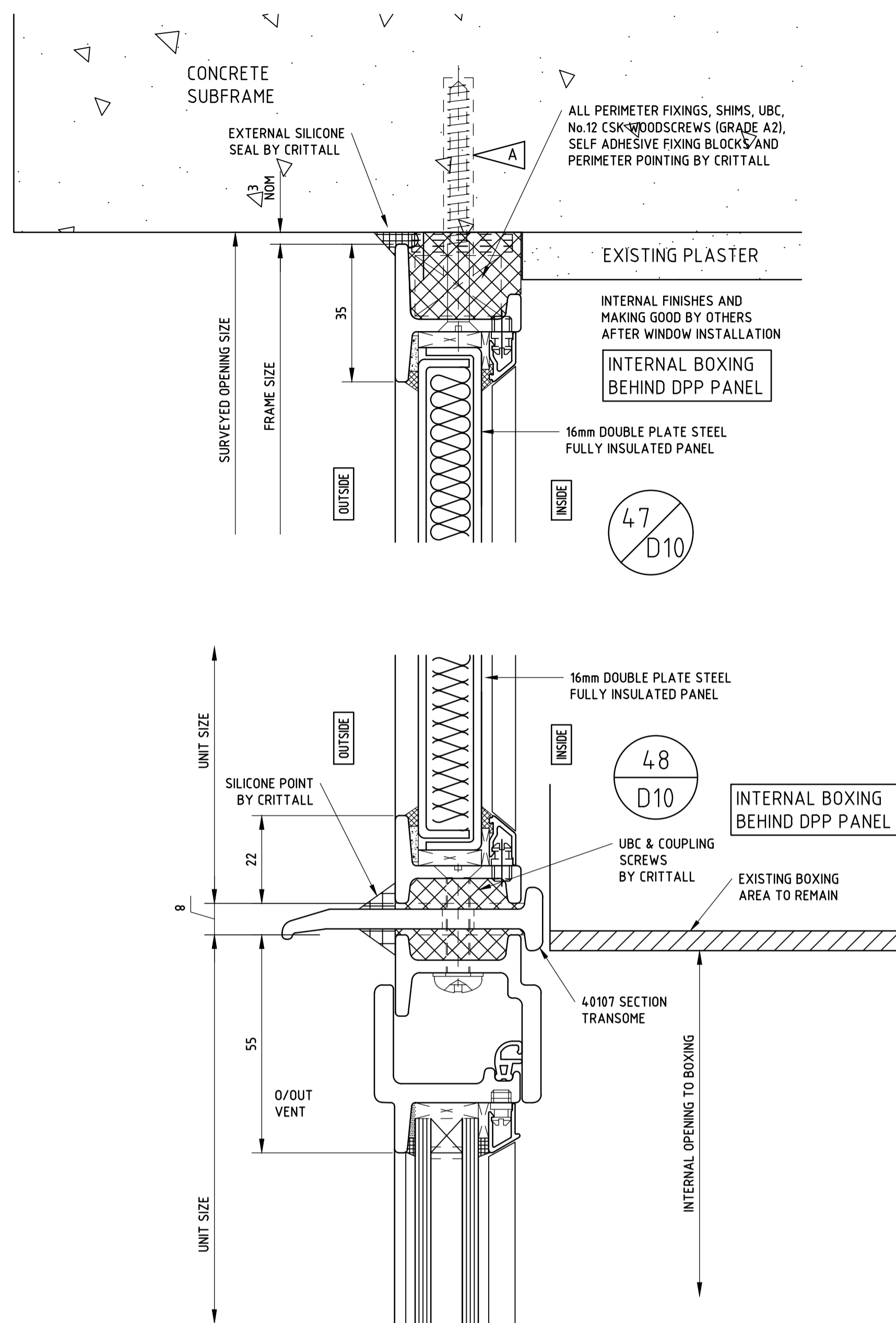
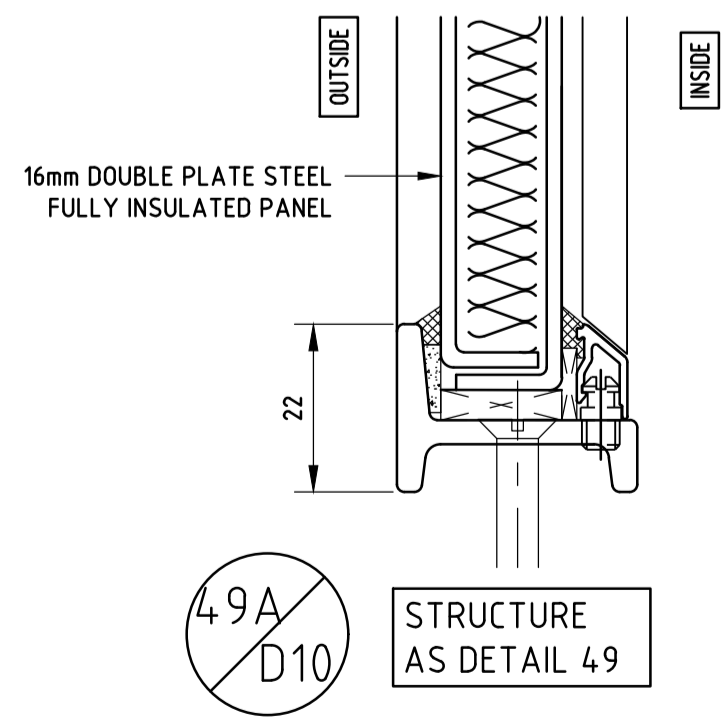
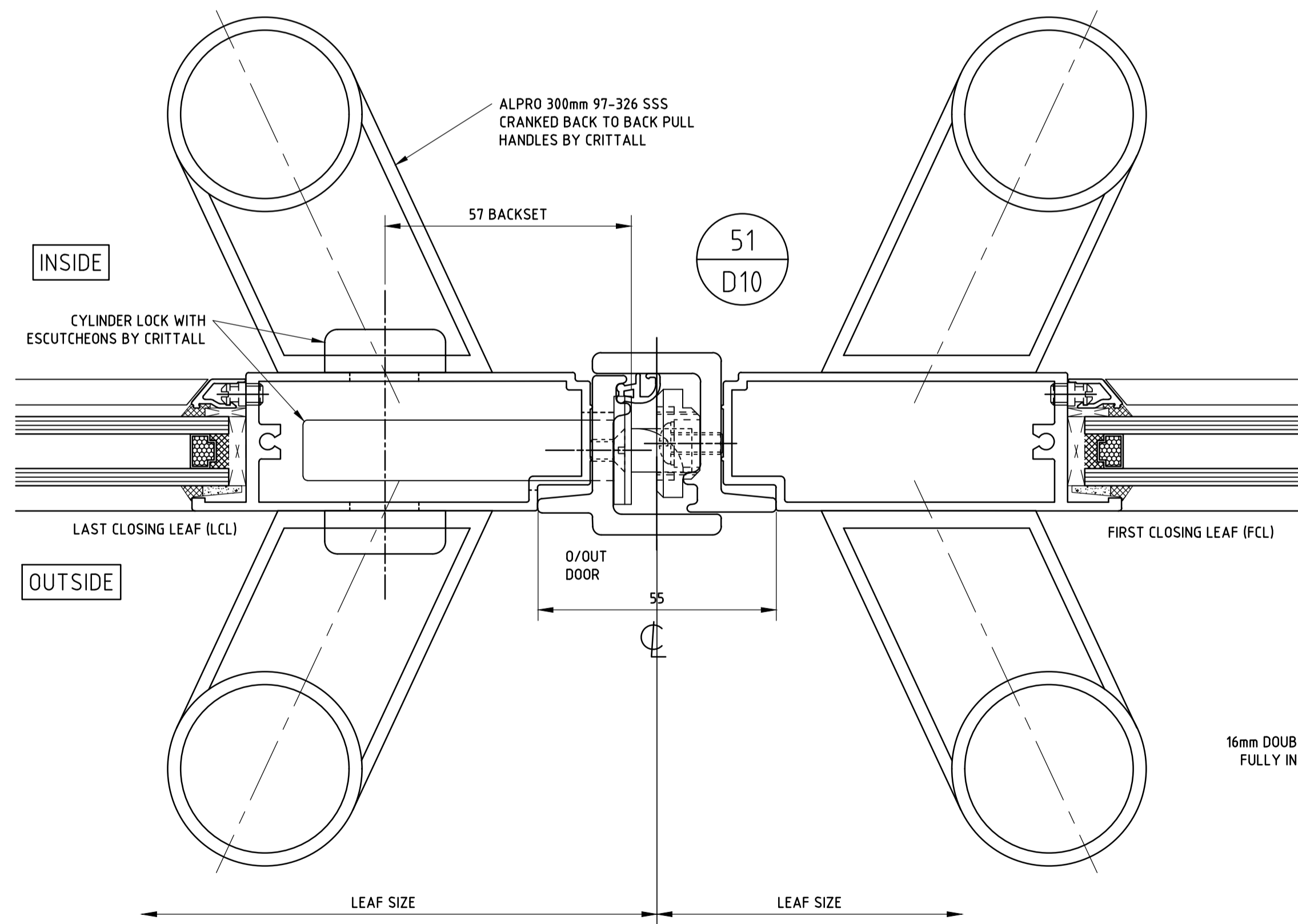
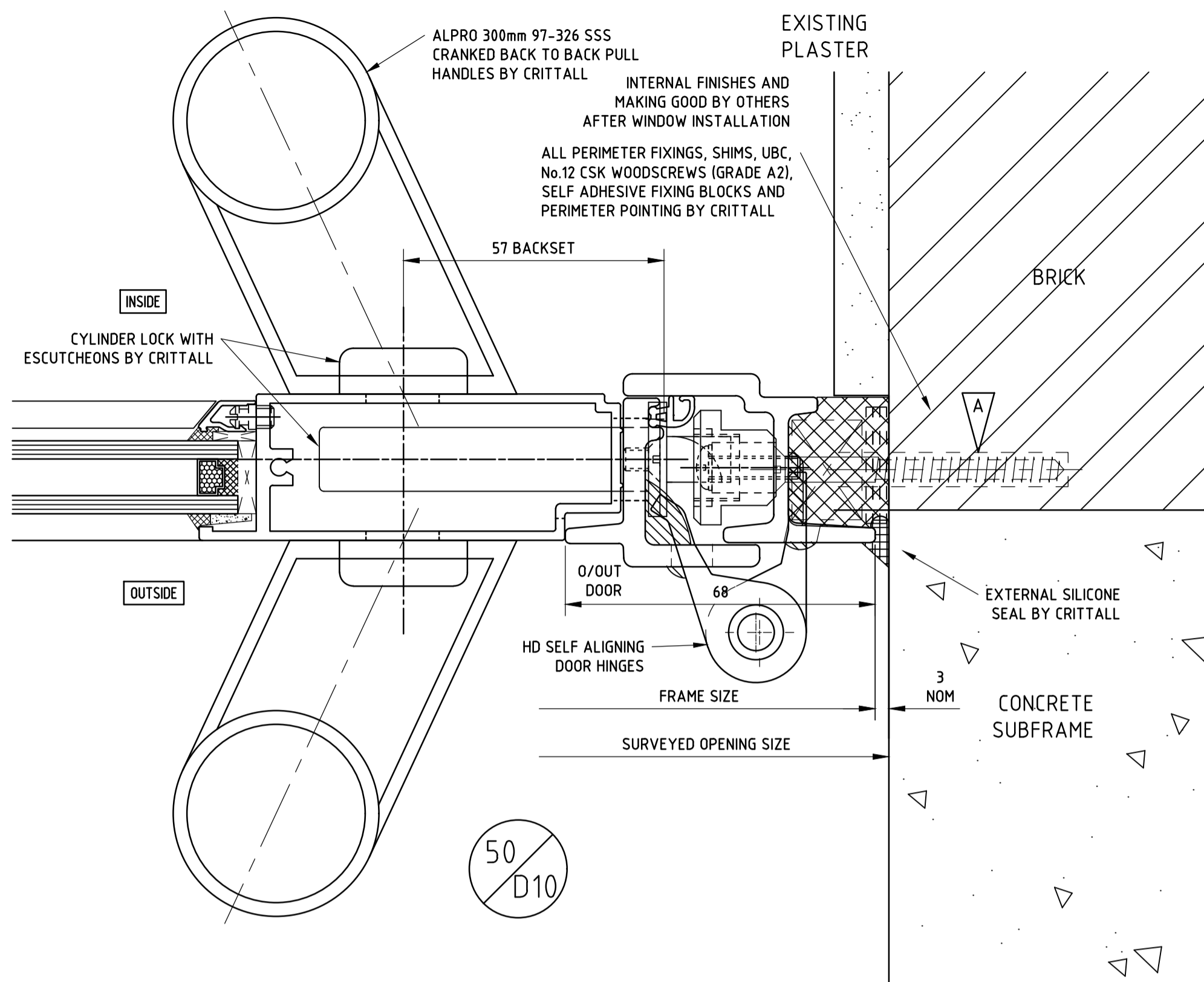
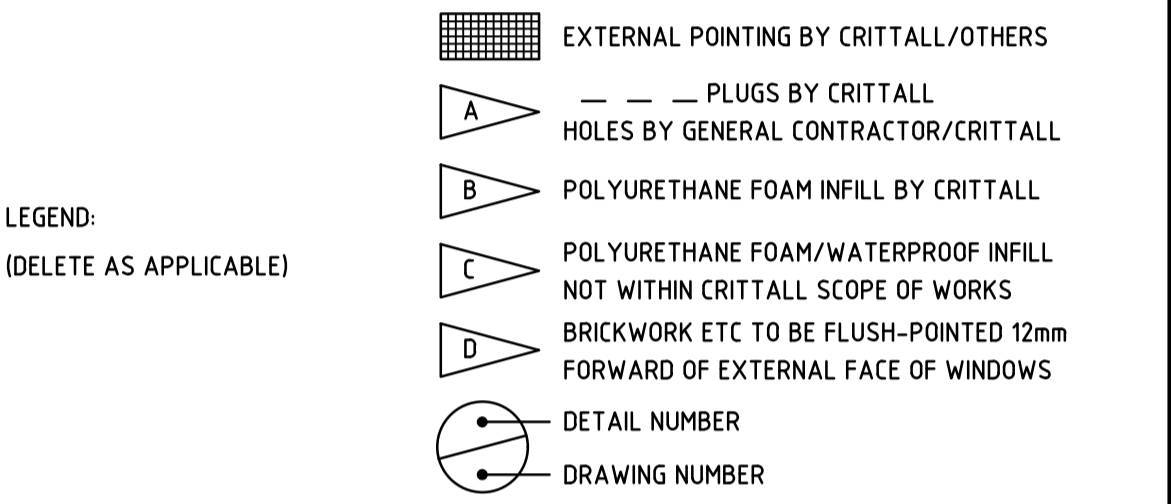


OUTSIDE ELEVATIONS - DO NOT SCALE

[illegible]

ISSUED FOR APPROVAL

* DETAILER'S SIGNATURE AUTHORIZES RELEASE FOR PRODUCTION/INSTALLATION



TOLERANCES: OUR PRICES ARE BASED UPON OPENINGS FOR WINDOWS BEING SUFFICIENTLY ACCURATE IN SIZE, POSITION, SQUARENESS AND STRAIGHTNESS TO ENABLE WINDOWS TO BE FIXED WITH A NOMINAL AND CONSISTENT CLEARANCE BETWEEN WINDOWS, FIXING BRACKETS AND STRUCTURE. THIS CLEARANCE DIMENSION MAY VARY, DEPENDING UPON SEALANT JOINT STRUCTURE.

BI-METALLIC CORROSION: THE CONTENT OF THESE DRAWINGS HAVE TAKEN INTO CONSIDERATION BI-METALLIC CORROSION (GALVANIC ACTION) EFFECTS FOR THE MATERIALS USED THEREIN, BY FOLLOWING THE ADVICE GIVEN IN PD 6484:1979, PUBLISHED BY BSI

VARIATIONS TO CONTRACT: FINAL APPROVAL OF THIS DRAWING BY THE SPECIFIER WILL BE DEEMED AS ACCEPTANCE OF PAYMENT LIABILITY FOR ANY TIME AND/OR COST VARIATION TO THE CONTRACT

THIS DRAWING IS THE PROPERTY OF CRITTALL WINDOWS LIMITED. IT IS A CONFIDENTIAL DOCUMENT AND MUST NOT BE COPIED, USED OR ITS CONTENTS DIVULGED WITHOUT PRIOR WRITTEN CONSENT

© CRITTALL WINDOWS LTD.

REVISION	REVISION TO ESTIMATE	BY	DATE
P01	1ST ISSUE FOR APPROVAL	HS	08.12.23
REVISION	REVISION TO DRAWING	BY	DATE



CRITTALL® IS A REGISTERED TRADE MARK OF CRITTALL WINDOWS LTD

TITLE	MIDDLESEX SUITE, LONDON BOROUGH OF HILLINGDON, CIVIC CENTRE, HIGH STREET,UXBRIDGE, UB8 1UW
-------	--

CONTRACTOR	GREYLINE, UNIT 2-3, 29 FOURTH WAY, WEMBLEY, HA9 0LH
------------	---

ARCHITECT	ALLEN CONSTRUCTION CONSULTANCY, 6TH FLOOR EQUIPOINT, 1506-1508 COVENTRY ROAD, SWAN YARDLEY, BIRMINGHAM, B25 8AD
-----------	---

DRAWN HSIMPSON	DATE DECEMBER 2023
CHECKED	SCALE AT A1 1:1 @ A1

DRAWING NUMBER	SHEET NUMBER	ITEMS
9823G2B	D10	P01

[illegible]

DETAILED BY	DATE	DIST
FINISH		