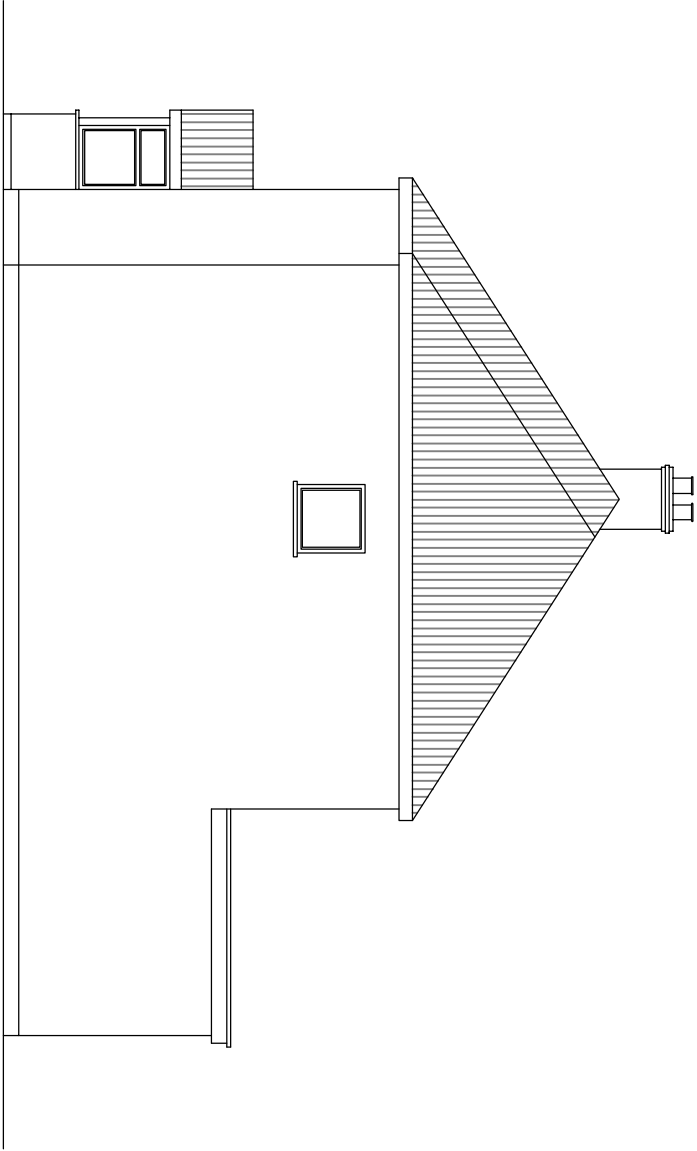


EXISTING SIDE(RHS) ELEVATION



PROPOSED SIDE(RHS) ELEVATION

NOTES:

1. This drawing is to be read in conjunction with all relevant Architects and Engineers drawings
2. Only figured dimensions are to be used for construction
3. All dimensions are to be verified on site prior to work commencing
4. All temporary works are the responsibility of the contractor

Copyright ©

<div><div><div><div><div></div><div></div><div></div></div><div><div></div><div></div><div></div></div></div><div><div><div>IBJ</div><div>Infinite Building Journey</div><div>Architectural Rendering Studio</div></div></div></div><div><div>J.BALASINGAM</div><div>TEL: 07500043858</div><div>www.ibjconsultant.com</div></div></div> <div><div>CLIENT :</div><div>MR. KESAVAN</div></div>		<div><div>DRAWN BY :</div><div>B.J</div></div>	<div><div>REVISION :A</div></div>
<div><div>PROJECT :</div><div>1 Belmore Avenue Hoyes UB4 ORB.</div></div>	<div><div>TITLE :</div><div>PROPOSED DOUBLE STOREY SIDE EXTENSION</div></div>	<div><div>DRAWING NO :</div><div>BJ/2024/034/10</div></div> <div><div>DATE :</div><div>22/09/2024</div></div>	
		<div><div>SCALE :</div><div>1:100</div></div>	<div><div>ORG.SIZE :</div><div>A3</div></div>