

Six Bells Landscape



Field Maple Hedge
Acer campestre



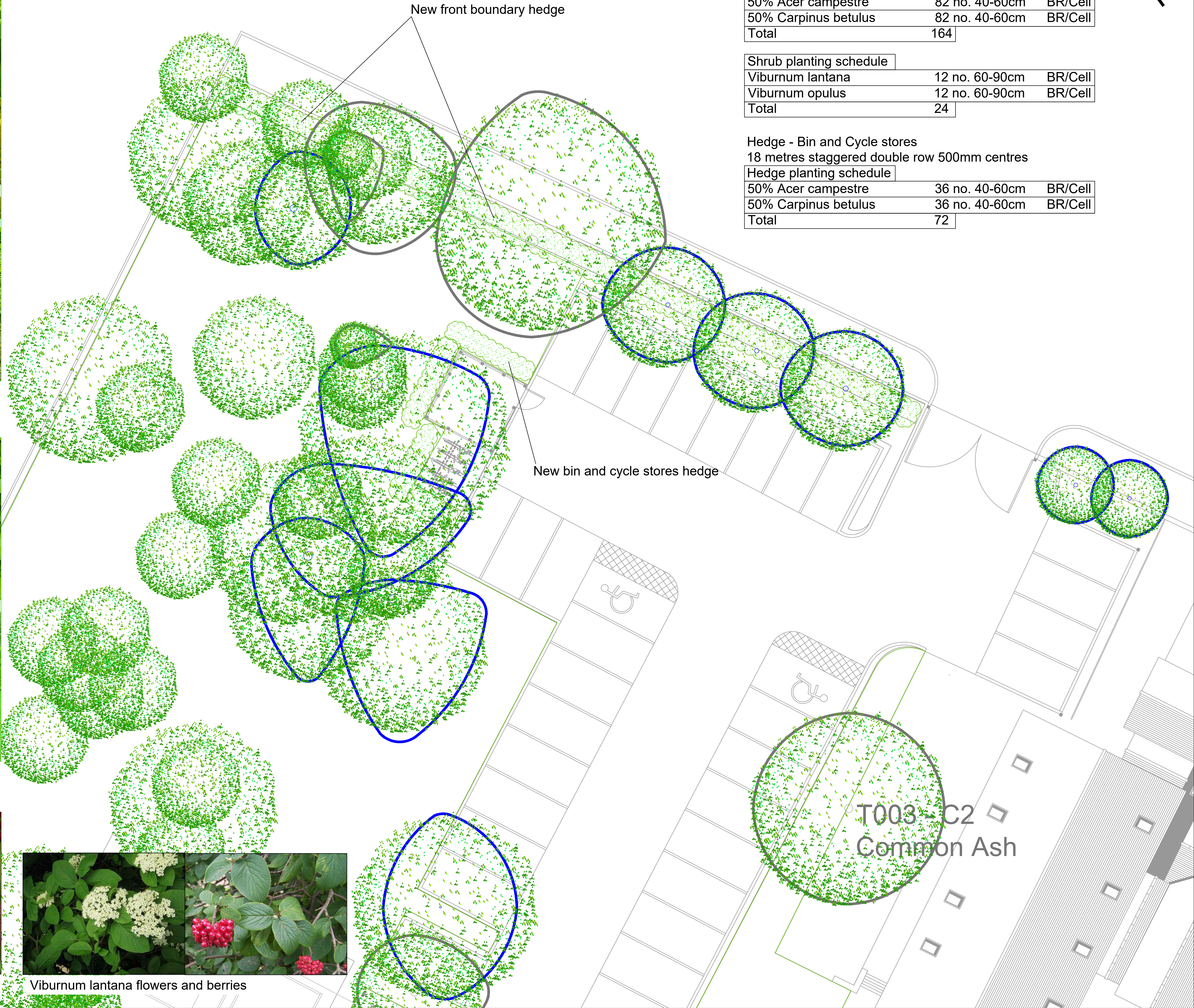
Hornbeam Hedge
Carpinus betulus



Viburnum opulus



Viburnum lantana flowers and berries



Hedge and shrub planting front boundary
Native species
41 metres staggered double row 500mm centres

Hedge planting schedule		
50% Acer campestre	82 no. 40-60cm	BR/Cell
50% Carpinus betulus	82 no. 40-60cm	BR/Cell
Total	164	

Shrub planting schedule		
Viburnum lantana	12 no. 60-90cm	BR/Cell
Viburnum opulus	12 no. 60-90cm	BR/Cell
Total	24	

Hedge - Bin and Cycle stores
18 metres staggered double row 500mm centres

Hedge planting schedule		
50% Acer campestre	36 no. 40-60cm	BR/Cell
50% Carpinus betulus	36 no. 40-60cm	BR/Cell
Total	72	

KEY

This drawing must be printed and used in colour

USHERWOOD ARBORICULTURE

Lawrence Usherwood
Tel. 01883 340398
Mobile 07753 211306
Email. lawrence@usherwoodarboriculture.co.uk

Client: Vernon Smith Associates
Project: Six Bells, Ruislip
Drawing Title: Hedge Planting Plan Front
On base by: MVS Associates
Dwg No: UA/PP1 Scale: 1:100@A1
Drawn By: MP Checked By: LU
Date:22/04/21 © Copyright
NOT FOR CONSTRUCTION