

WALL MOUNTED INDOOR UNIT
PKFY-P50VLM-E 6.3KW
DIMS L=898MM W=299MM D=237MM
QTY 2

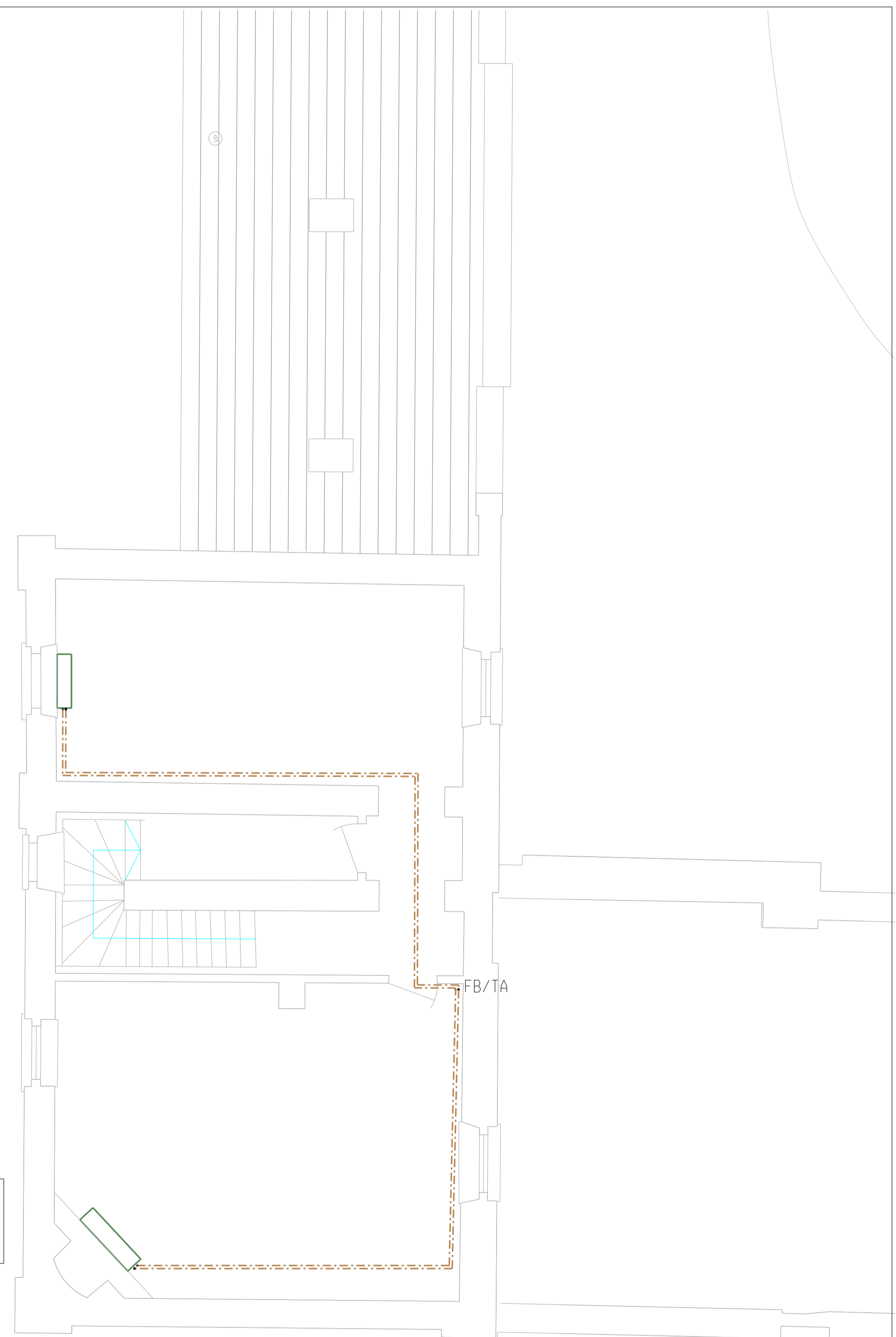
EXTERNAL CONDENSER UNIT
PUMY-SP112VKMR2
DIMS W:1050MM D=370MM H=981MM

EXTERNAL CONDENSER UNIT
TO SUPPLY FIRST FLOOR UNITS
PUMY-SP125VKM
DIMS W:1050MM D=370MM H=981MM

UNITS TO BE GROUND MOUNTED
ON STURDY LEVEL SURFACE
BASE SET INTO GROUND AS PER
MANUFACTURERS INSTRUCTION

WALL MOUNTED INDOOR UNIT
PKFY-50VLM-E 6.3KW
DIMS L=898MM W=237MM D=299MM

WALL MOUNTED INDOOR UNIT
PKFY-63VLM-E 8KW
DIMS L=1170MM W=295MM D=365MM



- NOTES
- REFRIGERANT
 - HEATING
 - VENTILATION SUPPLY
 - VENTILATION EXTRACT
 - UNDERGROUND SERVICE
 - HIGH LEVEL SERVICE

TENDER ISSUE	FEB21	DRP	B
REVISION TO ARCHITECTS COMMENTS	FEB21	DRP	A
REVISION	DATE	CHK BY	NO

TITLE	HEATING AND VENTILATION STABLE WEST	SCALE AT A1	1:50
PROJECT	CRANFORD PARK	DRAWN	DRP
ARCHITECT	THOMAS FORD	CHECKED	JMRD
		DATE	JAN21

ENGDESIGN
106-108 BERMONDSEY STREET LONDON SE1 3TX TELEPHONE 020 7357 7223

3050-5-0004B