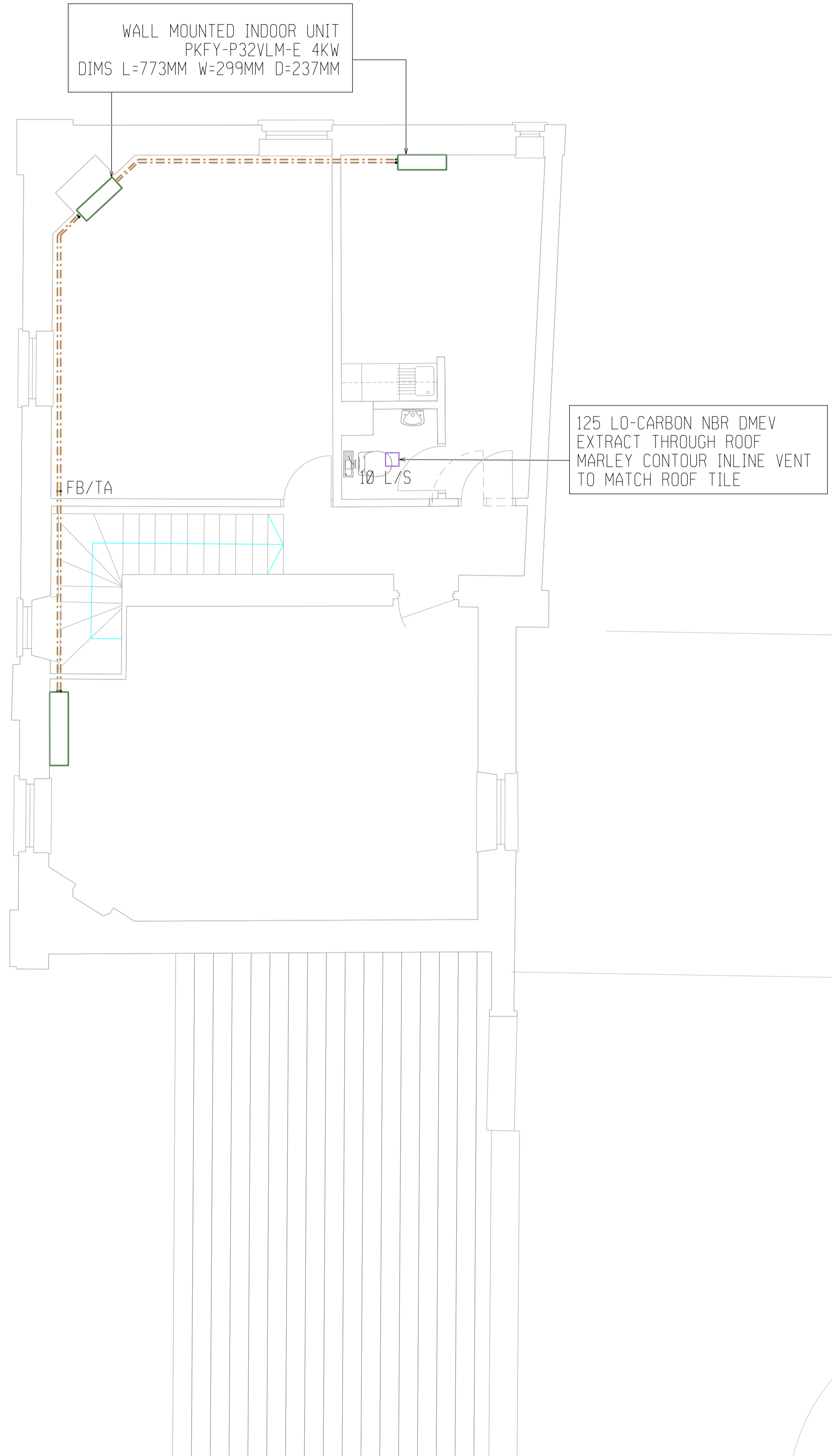


WALL MOUNTED INDOOR UNIT  
PKFY-P50VLM-E 6.3KW  
DIMS L=898MM W=299MM D=237MM  
QTY 2

EXTERNAL CONDENSER UNIT  
PUMY-SP112VKM  
DIMS W:1050MM D=370MM H=981MM

EXTERNAL CONDENSER UNIT  
TO SUPPLY FIRST FLOOR UNITS  
PUMY-SP125VKM  
DIMS W:1050MM D=370MM H=981MM

UNITS TO BE GROUND MOUNTED  
ON STURDY LEVEL SURFACE  
BASE SET INTO GROUND AS PER  
MANUFACTURERS INSTRUCTION  
  
ANTI VANDAL CAGE TO BE INSTALLED



WALL MOUNTED INDOOR UNIT  
PKFY-P32VLM-E 4KW  
DIMS L=773MM W=299MM D=237MM

WALL MOUNTED INDOOR UNIT  
PKFY-63VLM-E 8KW  
DIMS L=1170MM W=295MM D=365MM

125 LO-CARBON NBR DMEV  
EXTRACT THROUGH ROOF  
MARLEY CONTOUR INLINE VENT  
TO MATCH ROOF TILE

NOTES

- REFRIGERANT
- HEATING
- VENTILATION SUPPLY
- VENTILATION EXTRACT
- UNDERGROUND SERVICE
- HIGH LEVEL SERVICE

TENDER ISSUE	FEB21	DRP	B
REVISIED TO ARCHITECTS COMMENTS	FEB21	DRP	A
REVISION	DATE	CHK BY	NO

TITLE	HEATING AND VENTILATION STABLES EAST	SCALE AT A1	1:50
PROJECT	CRANFORD PARK	DRAWN	DRP
ARCHITECT	THOMAS FORD	CHECKED	JMRD
		DATE	JAN21

**ENGDESIGN**  
106-108 BERMONDSEY STREET LONDON SE1 3TX TELEPHONE 020 7357 7223

**3050-5-0003B**