



Safety and Condition Tree Survey

Uxbridge Hayes College
College Way
Coldharbour Ln
Hayes
UB3 3BB

Date: 21st May 2025

Client: Mark Walker Grounds Maintenance



**Instruction:**

The Blue Tree Company Ltd has been instructed to perform a Tree Safety and Condition tree survey at the above address. The Survey was carried out 21st May 2025

Site information: The entire site is protected under a Tree Preservation Order (TPO).

Limitations:

Limited Visibility: Limited visibility due to foliage, especially during certain seasons, can hinder a comprehensive assessment of tree conditions.

Seasonal Variations: Tree conditions can vary significantly with seasons, making it challenging to capture an accurate representation during a specific survey period. It is recommended that the trees are surveyed every 15 months. This is to allow the surveyor to see the condition of the trees in different seasons giving a full picture over a relatively short time period (6.5 years).

Hidden Defects: Some defects, such as internal decay or structural weaknesses, may not be visible during a visual inspection and may require additional diagnostic tools such as resistograph or sonic tomography.

Site Accessibility: Limited access to certain areas of the site may restrict the surveyor from assessing all trees, potentially leading to incomplete data.

Incomplete History: Lack of historical information about the trees, including previous maintenance or disease incidents, may limit the ability to assess the long-term health and stability of the trees.

Underground Issues: Subsurface conditions, such as root health and soil stability, may not be fully assessed during a standard above-ground survey.

Weather Conditions: Adverse weather conditions, such as heavy rain or strong winds, can affect the accuracy of the survey and may necessitate additional visits. This survey is valid for 15 months or wind force 5+ is experienced.

Dynamic Tree Growth: Trees are dynamic and can change over time. The assessment is a snapshot, and conditions may evolve, affecting the accuracy of the survey results over the long term.





Data Interpretation: Subjectivity in interpreting certain signs and symptoms may lead to variations in the assessment, especially in cases where the distinction between a hazard and a normal condition is ambiguous.

Contents: The contents are intended for the sole use of the client and the property owner. No liability is accepted for their use by any other parties to advance an argument or claim (including legal or financial) without prior consent

Risk: This report examines strategies for minimizing risks rather than completely eliminating them. Consequently, retaining the tree will still entail a certain level of risk. The clients acknowledge and accept any risks associated with these constraints.

Tree Schedule Key:

Reference: Allocated number or tag number of the specific trees.

Species: Species name of tree. Given in Latin and Common format.

Measurements: Height, crown spread, number of stems, Approximate age (life stage) of tree. Normally this will be given in Meters.

Survey Notes: A brief description of any notable features on each tree.

Condition: A general overview of the condition of the tree given as Good, Fair, Poor, Dead.

Recommendations/Timescale: Recommendations for any remedial works and the time frame in which it should be completed.





Tree Schedule

Ref No	Species	Measurements	Notes	Condition	Recommendation
718	Lombardy poplar (<i>Populus nigra italica</i>)	Height (m): 16 Crown Radius (m): 3 Life Stage: Mature	Recent heavy Pollard.	Fair	None at time of survey
719	Lombardy poplar (<i>Populus nigra italica</i>)	Height (m): 16 Crown Radius (m): 3	Recent heavy Pollard	Fair	None at time of survey
720	Lombardy poplar (<i>Populus nigra italica</i>)	Height (m): 16 Crown Radius (m): 3 Life Stage: Mature	Tree removed		
721	Silver birch (<i>Betula pendula</i>)	Height (m): 10 Crown Radius (m): 5 Life Stage: Mature	Minor cavity opposite first main limb to the west. Recent crown reduction.	Good	None at time of survey
722	Monterey cypress (<i>Cupressus macrocarpa</i>)	Height (m): 14 Crown Radius (m): 3 Life Stage: Mature	Snapped and hanging limbs on the southwest side. This will fall on to hedging so not considered a threat.	Fair	None at time of survey
723	Purple norway maple (<i>Acer platanoides</i> 'Crimson King')	Height (m): 13 Crown Radius (m): 6 Life Stage: Mature	Planting pit tree located in a car park some. No significant defects noted.	Fair	None at time of survey
724	Common ash (<i>Fraxinus excelsior</i>)	Height (m): 12 Crown Radius (m): 6 Life Stage: Mature	Significant epicormic growth from the buttresses. Ivy encroaching on the main stem preventing full visual tree inspection. Historic heavy reduction. Outer Canopy in good condition.	Fair	None at time of survey
726	Lombardy poplar (<i>Populus nigra italica</i>)	Height (m): 12 Crown Radius (m): 3 Life Stage: Over Mature	Tree removed.		





727	Lombardy poplar (<i>Populus nigra italica</i>)	Height (m): 12 Crown Radius (m): 3	lower stem in reasonable condition Recent heavy reduction	Fair	None at time of survey
728	Lombardy poplar (<i>Populus nigra italica</i>)	Height (m): 13 Crown Radius (m): 3 Life Stage: Mature	Recent pollard.	Fair	None at time of survey
729	Lombardy poplar (<i>Populus nigra italica</i>)	Height (m): 13 Crown Radius (m): 3 Life Stage: Mature	Recent pollard.	Fair	None at time of survey
731	Common ash (<i>Fraxinus excelsior</i>)	Height (m): 16 Crown Radius (m): 6 Life Stage: Mature	Slight bark inclusion in the main union at approximately 2.5 m this is stable.	Fair	None at time of survey
732	Lombardy poplar (<i>Populus nigra italica</i>)	Height (m): 8 Crown Radius (m): 2 Life Stage: Over Mature	Tree removed	Fair	None at time of survey
734	Lombardy poplar (<i>Populus nigra italica</i>)	Height (m): 14 Crown Radius (m): 3 Life Stage: Mature	Large open decay at ground level. Extending deep in to the main stem.	Poor	Fell to ground level. Timescale: 21-Nov-2025 (6 Months)
735	Lombardy poplar (<i>Populus nigra italica</i>)	Height (m): 13 Crown Radius (m): 3 Life Stage: Over Mature	Numerous unidentified bracket fungi around the main stem. Hollow hammer taps from numerous locations. Heavy Pollard at 6m.	Poor	Fell to ground level Timescale: 21-Nov-2025 (6 Months)
736	Lombardy poplar (<i>Populus nigra italica</i>)	Height (m): 14 Crown Radius (m): 3 Life Stage: Mature	Recent pollard.	Fair	None at time of survey
737	Lombardy poplar (<i>Populus nigra italica</i>)	Height (m): 14 Crown Radius (m): 3 Life Stage: Mature	Recent pollard.	Fair	None at time of survey
738	Lombardy poplar (<i>Populus nigra italica</i>)	Height (m): 14 Crown Radius (m): 3 Life Stage: Mature	Unable to perform a visual tree inspection due to surrounding fence.		Remove fence and report any defects noted. Timescale: 21-Nov-2025 (6 Months)
739	Common lime (<i>Tilia x vulgaris</i>)	Height (m): 13 Crown Radius (m): 4 Life Stage: Mature	Recent reduction. Minor included bark union in the first main union.	Fair	None at time of survey





740	Lombardy poplar (<i>Populus nigra italica</i>)	Height (m): 3 Crown Radius (m): 3 Life Stage: Mature	Tree removed, now growing as a coppice.		
741	Common lime (<i>Tilia x vulgaris</i>)	Height (m): 14 Crown Radius (m): 6 Life Stage: Mature	Cavity on the east side at ground level. Hammer taps giving normal results.	Fair	None at time of survey
743	Not identified (<i>Not identified</i>)	Height (m): 14 Crown Radius (m): 3 Life Stage: Mature	Recent heavy reduction.	Fair	None at time of survey
744	Horse chestnut (<i>Aesculus hippocastanum</i>)	Height (m): 14 Crown Radius (m): 8 Life Stage: Mature	Evidence of bleeding canker on the main stem in numerous locations and in the main canopy. No significant defects noted	Fair	None at time of survey
745	Beech (<i>Fagus sp.</i>)	Height (m): 7 Crown Radius (m): 4	Stump retained as habitat.	Poor	None at time of survey
746	Beech (<i>Fagus sp.</i>)	Height (m): 11 Crown Radius (m): 4 Life Stage: Early Mature	tree in good health	Good	none at time of survey
748	Lombardy poplar (<i>Populus nigra italica</i>)	Height (m): 12 Crown Radius (m): 3 Life Stage: Mature	some small patches of localized decay on the main stem. Sounding mallet indicates only localized decay historic Pollard at approximately 5 m.	Fair	None at time of survey
750	Horse chestnut (<i>Aesculus hippocastanum</i>)	Height (m): 13 Crown Radius (m): 6 Life Stage: Mature	Minor bark wounds.	Good	None at time of survey
751	Horse chestnut (<i>Aesculus hippocastanum</i>)	Height (m): 14 Crown Radius (m): 6 Life Stage: Mature	Bacterial wetwood noted at 2 m on the East side, bark has occluded around the wound. Historic heavy reduction. Bleeding canker noted.	Fair	None at time of survey
752	Horse chestnut (<i>Aesculus hippocastanum</i>)	Height (m): 12 Crown Radius (m): 5 Life Stage: Mature	stem crack from ground level to approximately 2.5 m on the southeast side. This is stable. Historic crown reduction. Bleeding canker throughout.	Poor	None at time of survey
753	Lombardy poplar (<i>Populus nigra italica</i>)	Height (m): 18 Crown Radius (m): 3 Life Stage: Mature	Trees in good condition some epicormic growth from the main stem to crown break. Historic Pollard at approximately 11 to 12 meters	Fair	None at time of survey





755	Ash (<i>Fraxinus sp.</i>)	Height (m): 13 Crown Radius (m): 8 Life Stage: Mature	Bark damage around the base of the stem in all directions this is superficial. Hammer taps equal sound minor dead wood throughout the canopy. Canopy is looking a little bit sparse. Fairly recent crown reduction.	Fair	None at time of survey
756	Lombardy poplar (<i>Populus nigra italica</i>)	Height (m): 18 Crown Radius (m): 3	Slight hollow tap sounds at the base on the northeast side the seems to be localized. Fairly recent reduction.	Fair	None at time of survey
758	Lombardy poplar (<i>Populus nigra italica</i>)	Height (m): 17 Crown Radius (m): 3 Life Stage: Mature	Tree in reasonable condition. historic Pollard approximately 13m	Fair	None at time of survey
759	Lombardy poplar (<i>Populus nigra italica</i>)	Height (m): 13 Crown Radius (m): 3 Life Stage: Mature	Tree removed	Poor	
760	Lombardy poplar (<i>Populus nigra italica</i>)	Height (m): 17 Crown Radius (m): 3 Life Stage: Mature	Tree in reasonable condition. historic Pollard approximately 13m	Fair	None at time of survey
761	Lombardy poplar (<i>Populus nigra italica</i>)	Height (m): 17 Crown Radius (m): 3 Life Stage: Mature	Tree removed.		
762	Lombardy poplar (<i>Populus nigra italica</i>)	Height (m): 17 Crown Radius (m): 3 Life Stage: Mature	Tree in reasonable condition. historic Pollard approximately 13m	Fair	None at time of survey
763	Lombardy poplar (<i>Populus nigra italica</i>)	Height (m): 17 Crown Radius (m): 3 Life Stage: Mature	Habitat holes at 6m in good condition.	Fair	None at time of survey
764	Lombardy poplar (<i>Populus nigra italica</i>)	Height (m): 17 Crown Radius (m): 3 Life Stage: Mature	Historic Pollard approximately 13 m.	Fair	None at time of survey
765	Lombardy poplar (<i>Populus nigra italica</i>)	Height (m): 17 Crown Radius (m): 3 Life Stage: Mature	Tree in reasonable condition. historic Pollard approximately 13m	Fair	None at time of survey
766	Lombardy poplar (<i>Populus nigra italica</i>)	Height (m): 17 Crown Radius (m): 3 Life Stage: Mature	Tree in reasonable condition. historic Pollard approximately 13m	Fair	None at time of survey





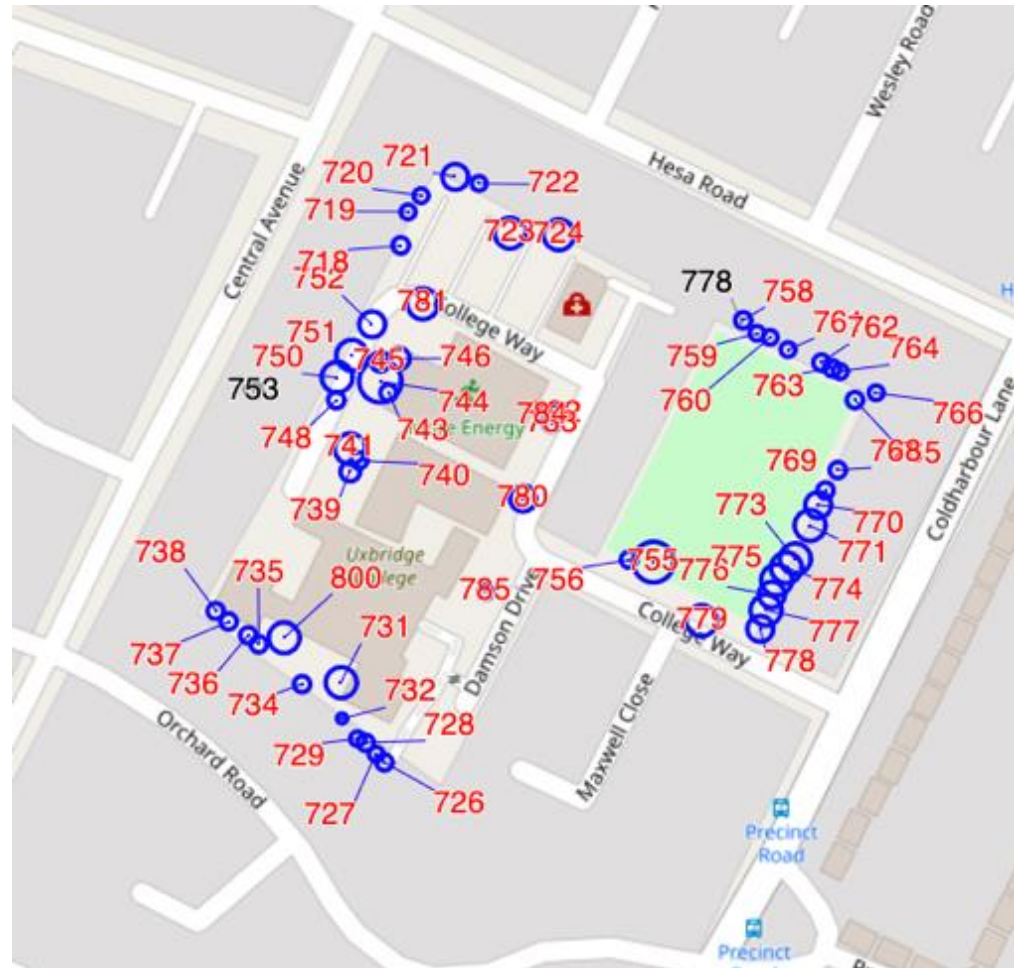
768	Lombardy poplar (<i>Populus nigra italica</i>)	Height (m): 18 Crown Radius (m): 3	Unable to fully survey the base due to undergrowth.	Fair	None at time of survey
769	Lombardy poplar (<i>Populus nigra italica</i>)	Height (m): 14 Crown Radius (m): 3	Tree in reasonable condition. historic Pollard approximately 13m	Fair	None at time of survey
770	Lombardy poplar (<i>Populus nigra italica</i>)	Height (m): 17 Crown Radius (m): 5 Life Stage: Mature	Tree in reasonable condition. historic Pollard approximately 13m	Fair	None at time of survey
771	Lombardy poplar (<i>Populus nigra italica</i>)	Height (m): 15 Crown Radius (m): 6 Life Stage: Mature	Hammer taps found hollow area at ground level on the north side extending to approximately 1 m. This is localised to the area remaining stem hammer taps = solid.	Fair	
773	Lombardy poplar (<i>Populus nigra italica</i>)	Height (m): 7 Crown Radius (m): 6 Life Stage: Mature	Tree in reasonable condition. historic Pollard approximately 13m	Fair	None at time of survey
774	Lombardy poplar (<i>Populus nigra italica</i>)	Height (m): 14 Crown Radius (m): 6 Life Stage: Mature	Tree in reasonable condition. historic Pollard approximately 13m	Fair	None at time of survey
775	Lombardy poplar (<i>Populus nigra italica</i>)	Height (m): 14 Crown Radius (m): 6 Life Stage: Mature	Tree in reasonable condition. historic Pollard approximately 13m	Fair	None at time of survey
776	Lombardy poplar (<i>Populus nigra italica</i>)	Height (m): 17 Crown Radius (m): 5	Hollow hammer to the north and south. This is localised.	Fair	None at time of survey
777	Common lime (<i>Tilia x vulgaris</i>)	Height (m): 14 Crown Radius (m): 6	Overall tree in good condition. Significant epicormic growth around the base historic Pollard at approximately 14 m	Fair	None at time of survey
778	Lombardy poplar (<i>Populus nigra italica</i>)	Height (m): 17 Crown Radius (m): 5	Overall tree in good condition. Significant epicormic growth around the base historic Pollard at approximately 14 m	Fair	None at time of survey
779	Lime (<i>Tilia sp.</i>)	Height (m): 15 Crown Radius (m): 6 Life Stage: Mature	Ivy covered main stem originating from the West preventing full visual tree inspection. outer canopy is vigorous and healthy.	Fair	Remove epicormic growth to crown break and remove ivy from ground level to 2 m report any defects noted.. Crown lift over footpath to 3m Timescale: 21-Nov-2025 (6 Months)

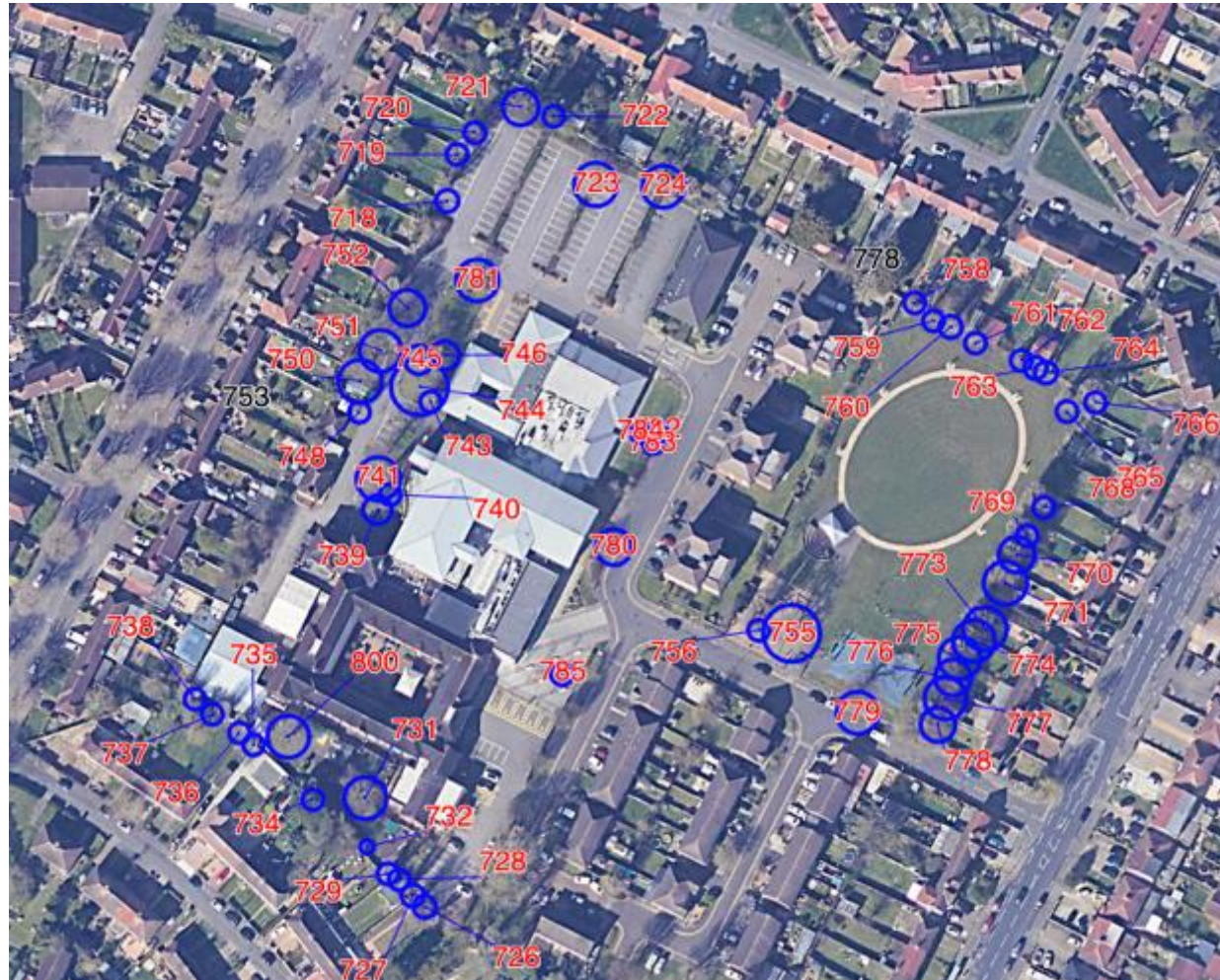




780	Cherry (<i>Prunus sp. 'Cherry'</i>)	Height (m): 5 Crown Radius (m): 5 Life Stage: Mature	No significant defects noted	Good	None at time of survey
781	Hornbeam (<i>Carpinus betulus</i>)	Height (m): 12 Crown Radius (m): 6 Life Stage: Mature	No significant defects noted	Good	None at time of survey
782	Silver birch (<i>Betula pendula</i>)	Height (m): 5 Crown Radius (m): 3 Life Stage: Young	No significant defects noted	Good	None at time of survey
783	Silver birch (<i>Betula pendula</i>)	Height (m): 5 Crown Radius (m): 3 Life Stage: Young	No significant defects noted	Good	None at time of survey
784	Silver birch (<i>Betula pendula</i>)	Height (m): 5 Crown Radius (m): 3 Life Stage: Young	No significant defects noted	Good	None at time of survey
785	Silver birch (<i>Betula pendula</i>)	Height (m): 5 Crown Radius (m): 3 Stems: 6 Life Stage: Young	No significant defects noted	Good	None at time of survey
800	Sycamore (<i>Acer pseudoplatanus</i>)	Height (m): 14 Crown Radius (m): 6 Life Stage: Mature	Large open cavity on the north east side at ground level. Kretchamaria dusta noted within the decay. Significant dead wood in the upper canopy.	Fair	Remove tree. Timescale: 21-Aug-2025 (3 Months)







ISO14001
Elcoat

ISO9001
Elcoat

ISO45001
Elcoat



T734



T800

