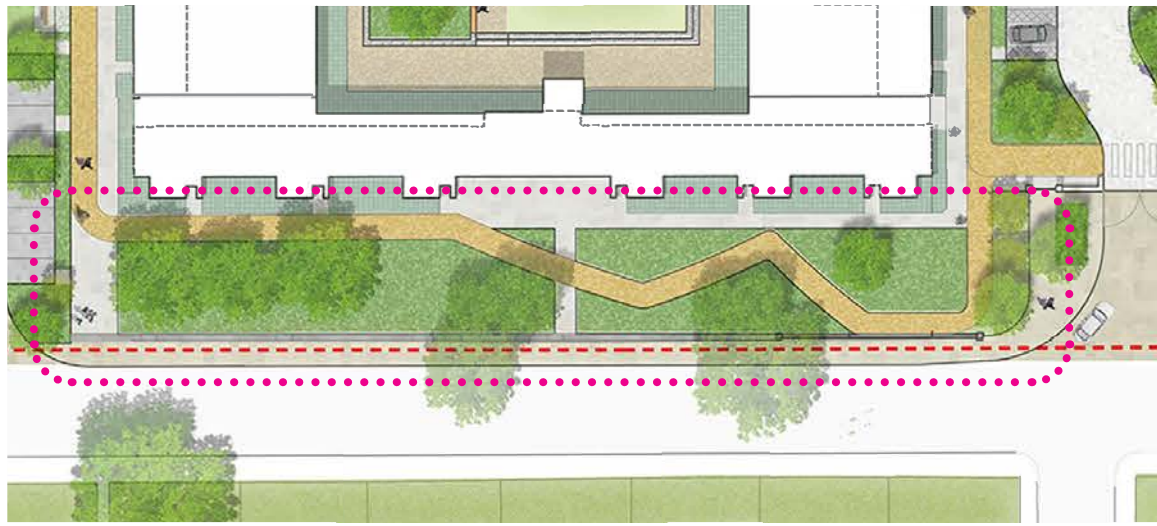
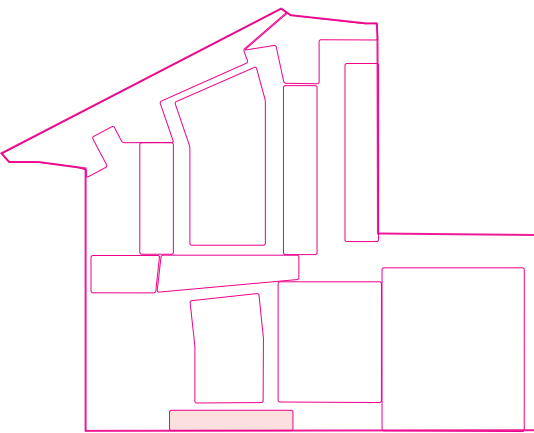
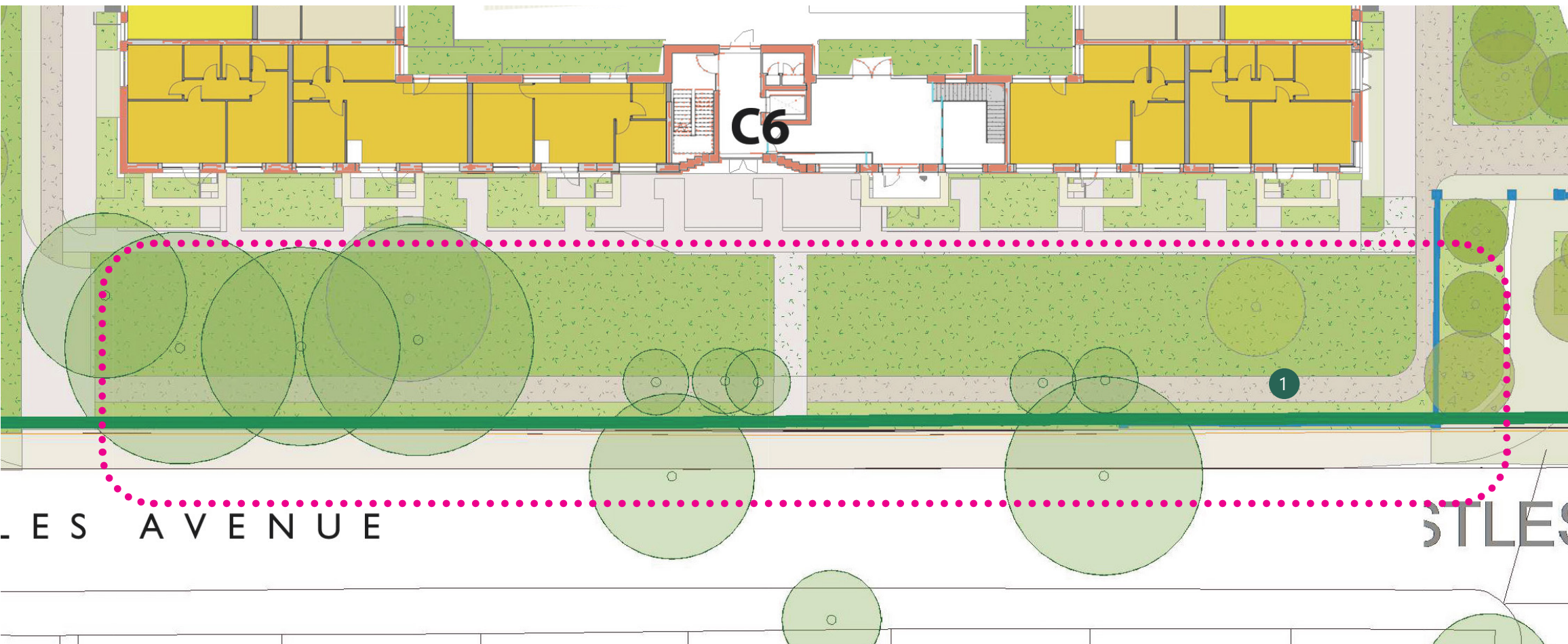


2.8 BLOCK C SOUTHERN GARDEN

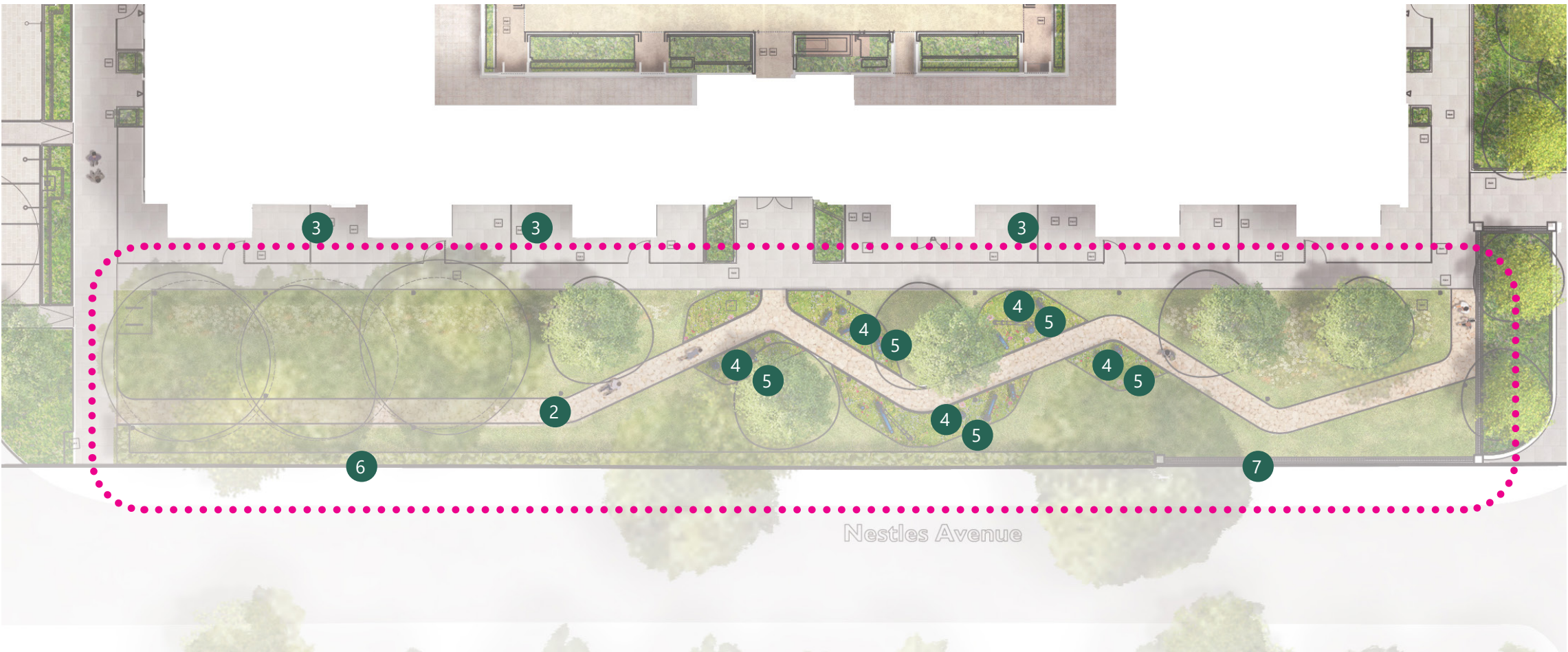
- 1. AUS Masterplan included a simplified path route through the space.
- 2. Design incorporates a path that more closely reflects the original illustrative masterplan. The route has been adjusted to minimise the impact on the existing retained trees.
- 3. Clarification of private terrace positions and buffer planting locations.
- 4. Integration of the new artwork proposals.
- 5. Additional ornamental planting as a setting for the artwork.
- 6. Low hedgerow included on boundary of the site to help define the edge of the space and mirror the proposals installed in front of Block D.
- 7. Retention of the existing walls and railings as shown in the original materplan.



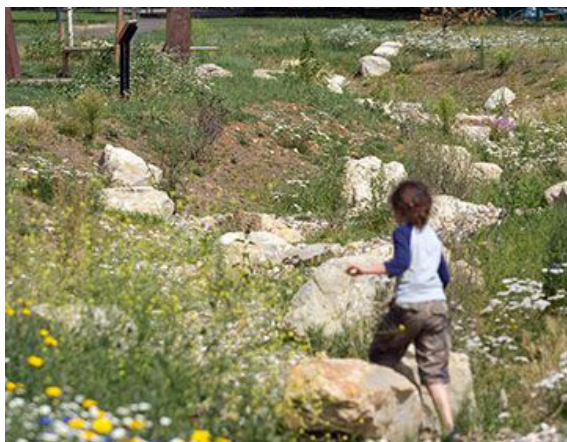
ORIGINAL ILLUSTRATIVE MASTERPLAN



AUS MASTERPLAN



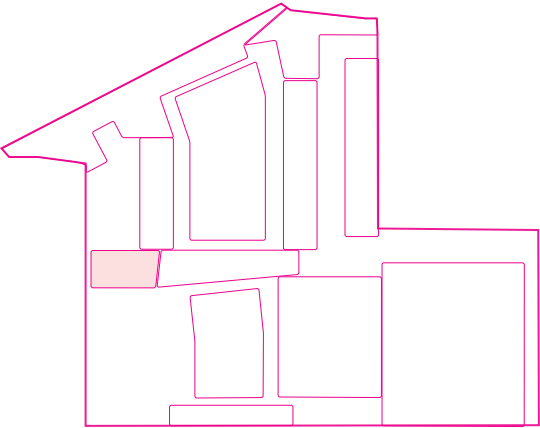
LATEST ILLUSTRATIVE LANDSCAPE MASTERPLAN



2.9 BLOCK D & E PLAY

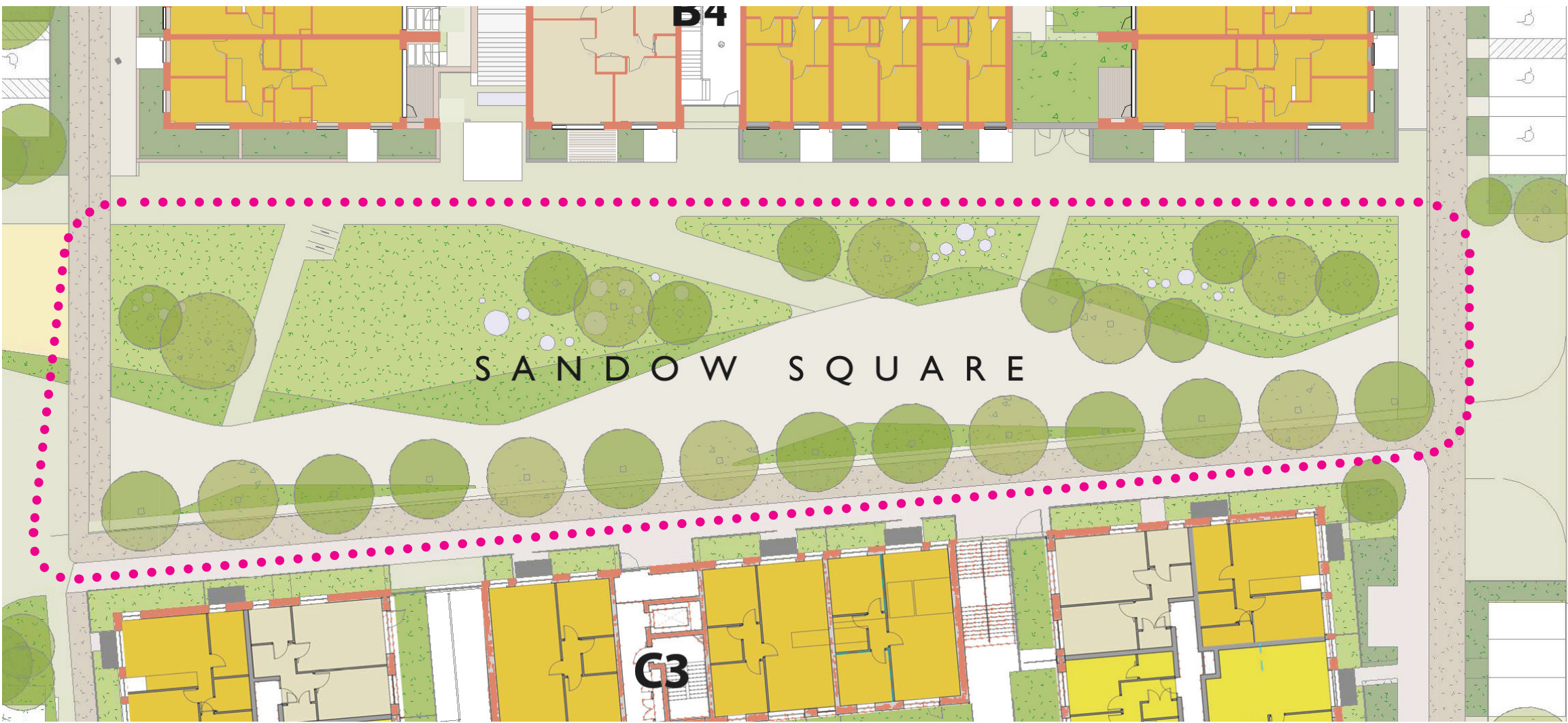
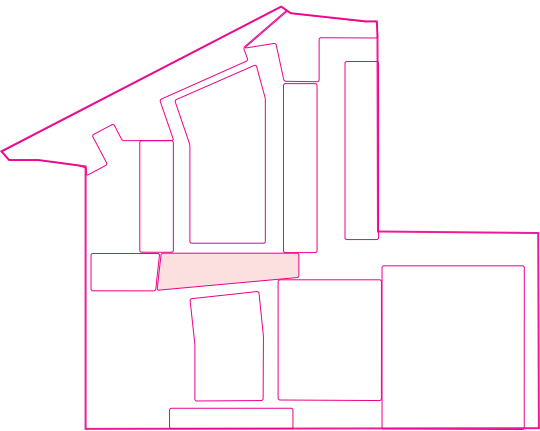
This space play area has already been installed but Barratt West London have comitted to improving the quality of the space that has been completed.

1. Defined play area with formal play equipment.
2. Introduction of gym area.
3. Relocation of tree and ornamental planting areas.
4. Additional tree and ornamental planting along the edge of the road.



2.10 SANDOW SQUARE

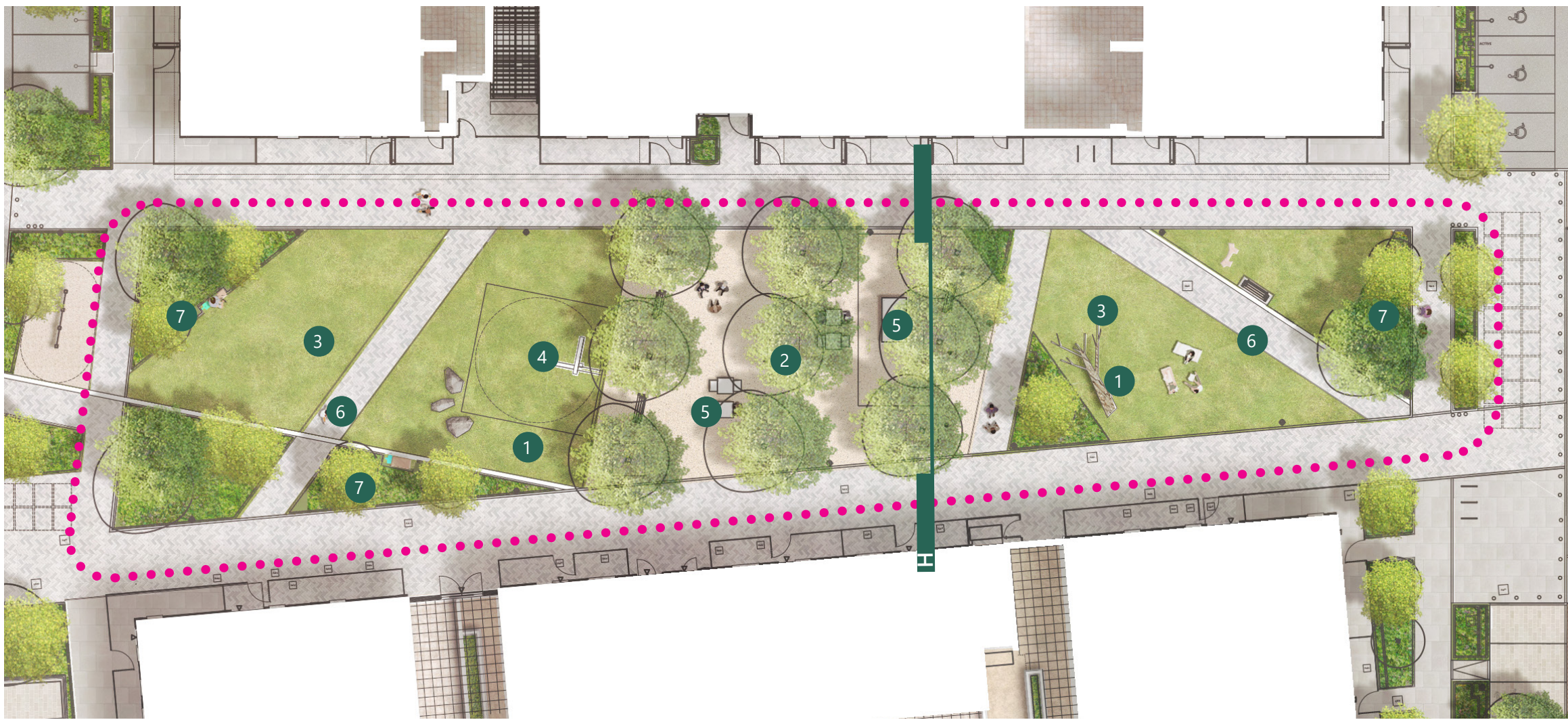
- 1. Minimise the amount of paving within the space and maximise usable areas for residents.
- 2. Relocation of the tree positions to create a threshold into the space and a glade in the centre of the square.
- 3. Larger lawn areas on the eastern and western edges to maximise the sunny areas of the space.
- 4. Formal play equipment integrated within the spaces.
- 5. Outdoor table tennis and and chess tables below the tree glade.
- 6. Relocated access paths to match desire lines through the space.
- 7. Integration of the new artwork proposals.



AUS MASTERPLAN



SECTION H PROPOSED



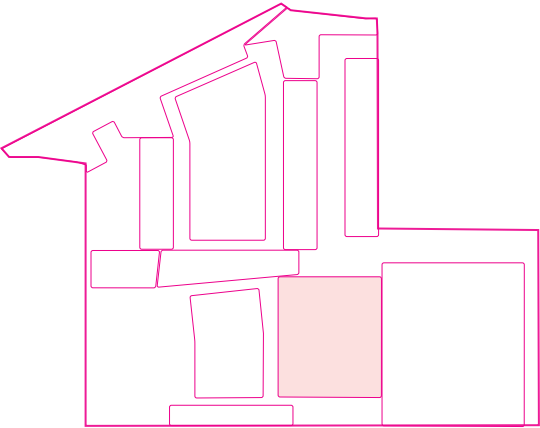
LATEST ILLUSTRATIVE LANDSCAPE MASTERPLAN



2.11 BLOCK H & I

The notes regarding the block H redesign below are included for information only. The changes were approved as part of the application for the revised proposals noted in the introduction.

- 1. Retention of the nursery garden on the south of the site.
- 2. Integration of a new lightwell courtyard in the centre of the building.
- 3. Loading bay and drop off zone separated from the access road following feedback from highways during the application process.
- 4. Inclusion of 2nr accessible bays for the community use following feedback from highways during the planning application process.
- 5. A larger square between Block H & I with tree and ornamental planting
- 6. Road materials to match the paving areas installed on the road areas outside Block D to maintain the same threshold from Nestle Avenue.
- 7. Integration of latest artwork proposals.



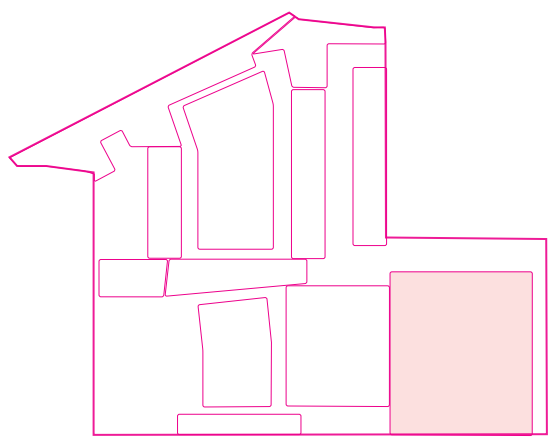
FORMER NESTLE FACTORY, HAYES



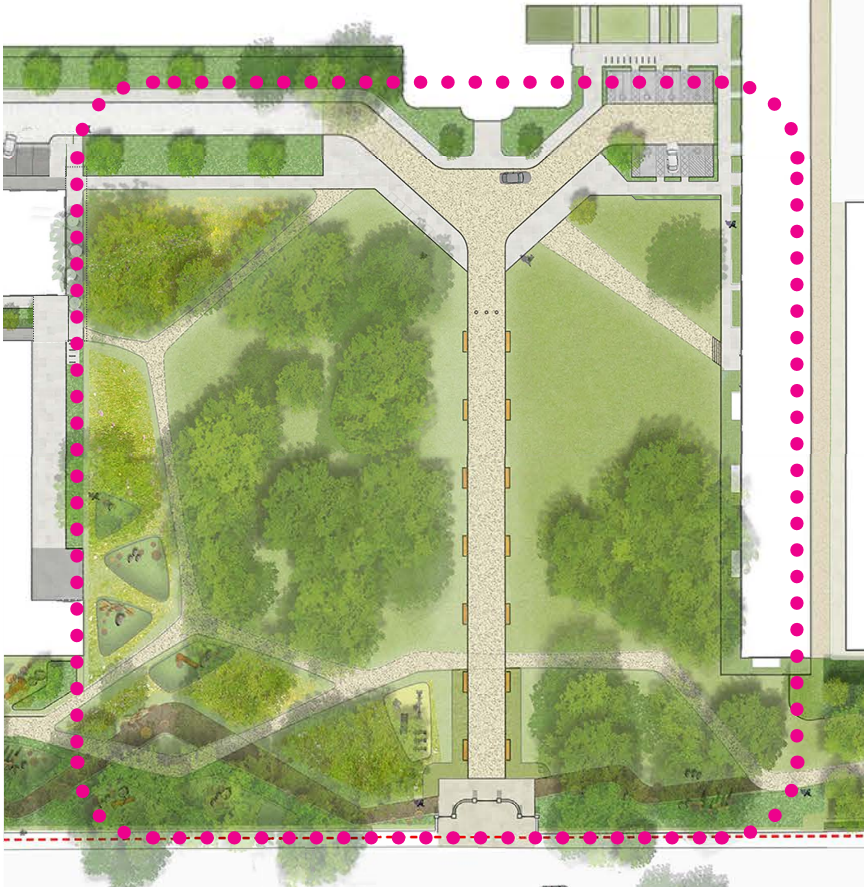
FORMER NESTLE FACTORY, HAYES

2.12 CARNATION GARDENS

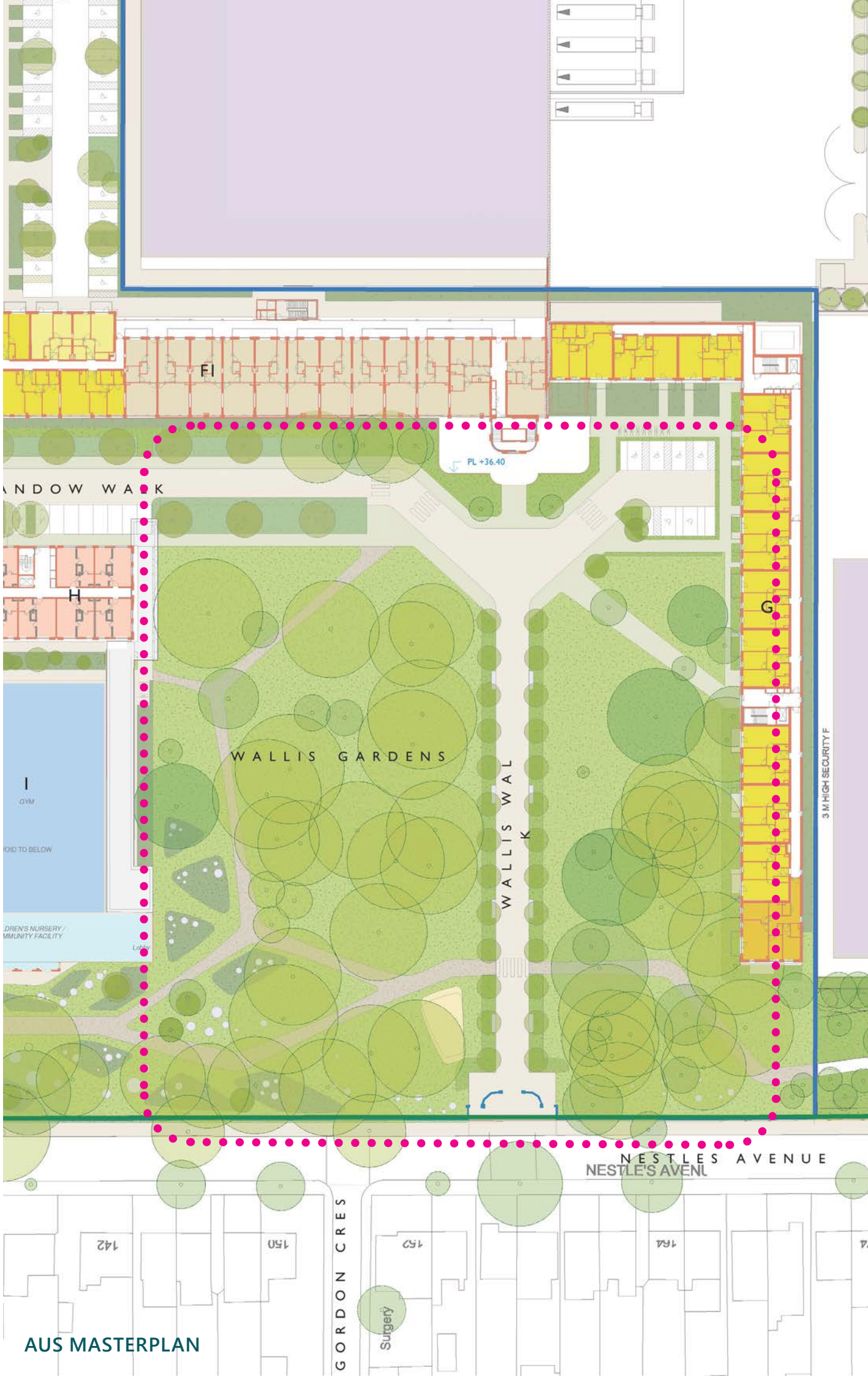
- 1. Retention of some of the temporary planting that has been installed around the temporary parking when the parking has been removed.
- 2. Removal of some of the temporary planting to ensure that the open feel of the original park design is maintained in the new design.
- 3. Pathway to connect the Block G entrance to the main entrance gate.
- 4. Relocation of the secondary paths to reflect the installed paths as part of the Marketing Suite paths.
- 5. Relocation of the play area positions to reflect the play spaces installed on site. Locations revised due to the marketing suite position.
- 6. Play area has been developed with reinforced grass surfacing to minimise the visual impact in the space. Formal play equipment has been included for improved play value.
- 7. Integration of the artwork proposals.



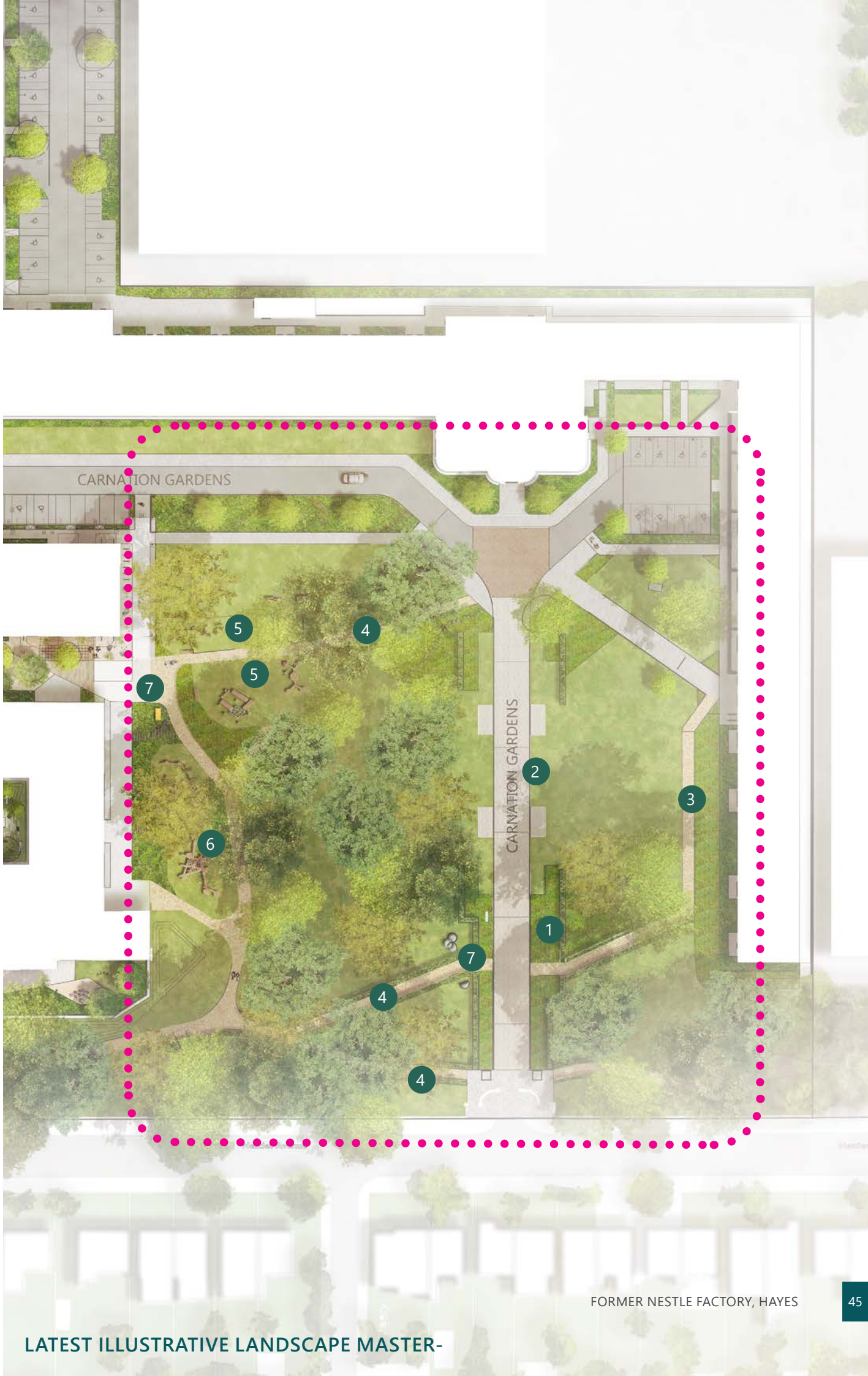
FORMER NESTLE FACTORY, HAYES



ORIGINAL ILLUSTRATIVE MASTERPLAN



AUS MASTERPLAN



LATEST ILLUSTRATIVE LANDSCAPE MASTER-

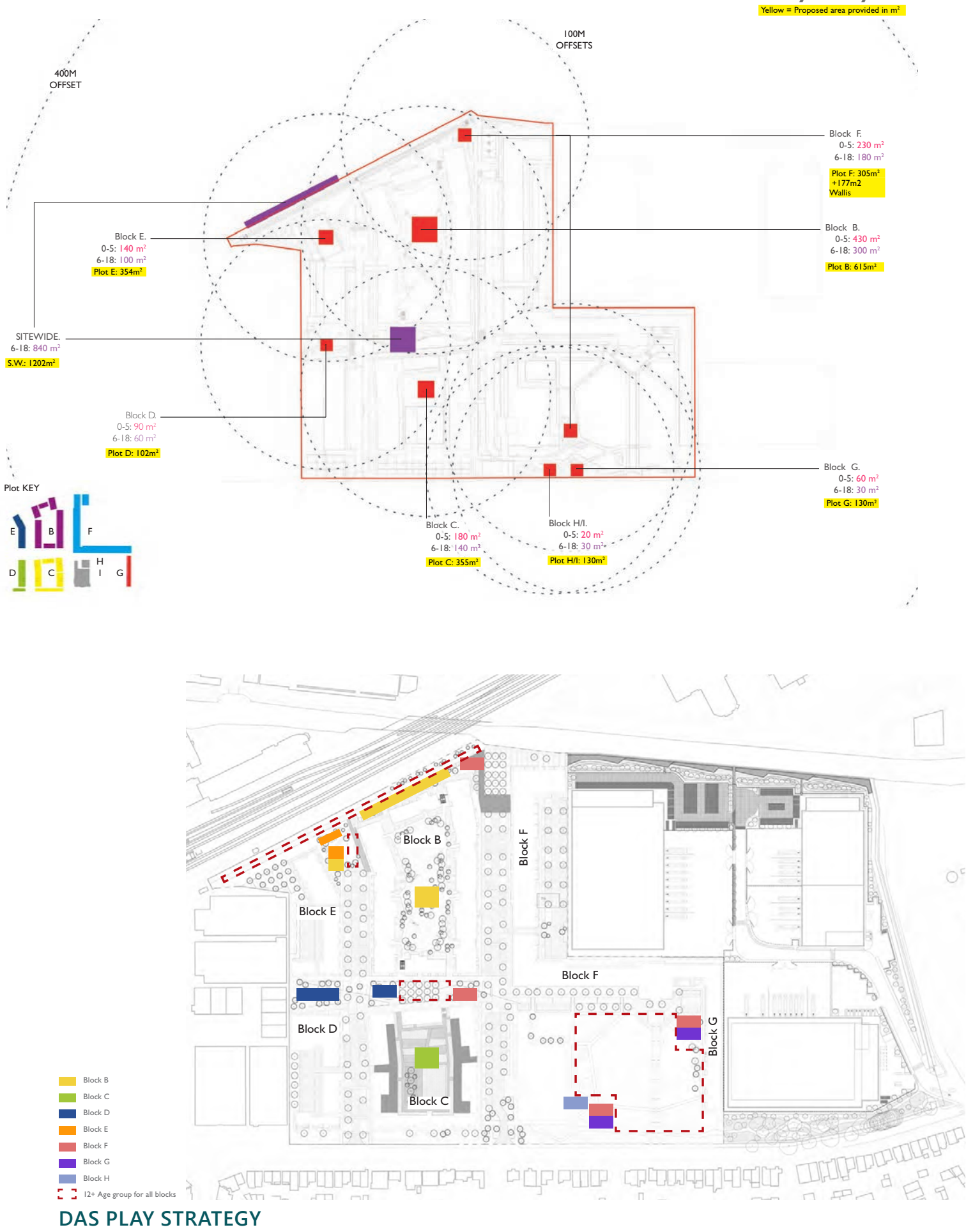
FORMER NESTLE FACTORY, HAYES

3.1 PLAY STRATEGY

The play strategy follows the principles set out within the AUS planning applicatuin.

DAS PLAY STRATEGY FIGURES

Sept 2020 (Revision 03 Calculators)									
	Block B Ph 4	Block C Ph 5	Block D Ph 2	Block E Ph 3	Block F Ph 1	Block G Ph 6	Block H Ph 6	No. of children	Area of play space required sqm
0-5	61	12	31	9	14	4	0	131	1310
5-11	41	5	11	5	6	1	0	69	690
12+	29	3	6	4	4	0	0	46	460
Total GLA	1280	200	480	180	240	60	0		2440
Total Local	640	100	240	90	120	30	0		1220



- 0-4 Block B
- 0-4 Block C
- 0-4 Block D
- 0-4 Block E
- 0-4 Block F
- 0-4 Block G
- 0-4 Block H
- 5-11 Block B
- 5-11 Block C
- 5-11 Block D
- 5-11 Block E
- 5-11 Block F
- 5-11 Block G
- 5-11 Block H
- 12+ Block B
- 12+ Block C
- 12+ Block D
- 12+ Block E
- 12+ Block F
- 12+ Block G
- 12+ Block H

0-4 YEAR OLD

A landscaped space with engaging play features and places for cares to sit and talk, with features including:

- Climbing
- Rolling
- Balancing
- Jumping
- Social Interaction
- Imaginative play
- Sensory Play

5-11 YEAR OLD PLAY

Landscape areas with landscape and equipment so that children up to the age of 11 can play and be physically active, a flexible space , with space for carers as well as areas where children can gain a sense of independence to include features such as:

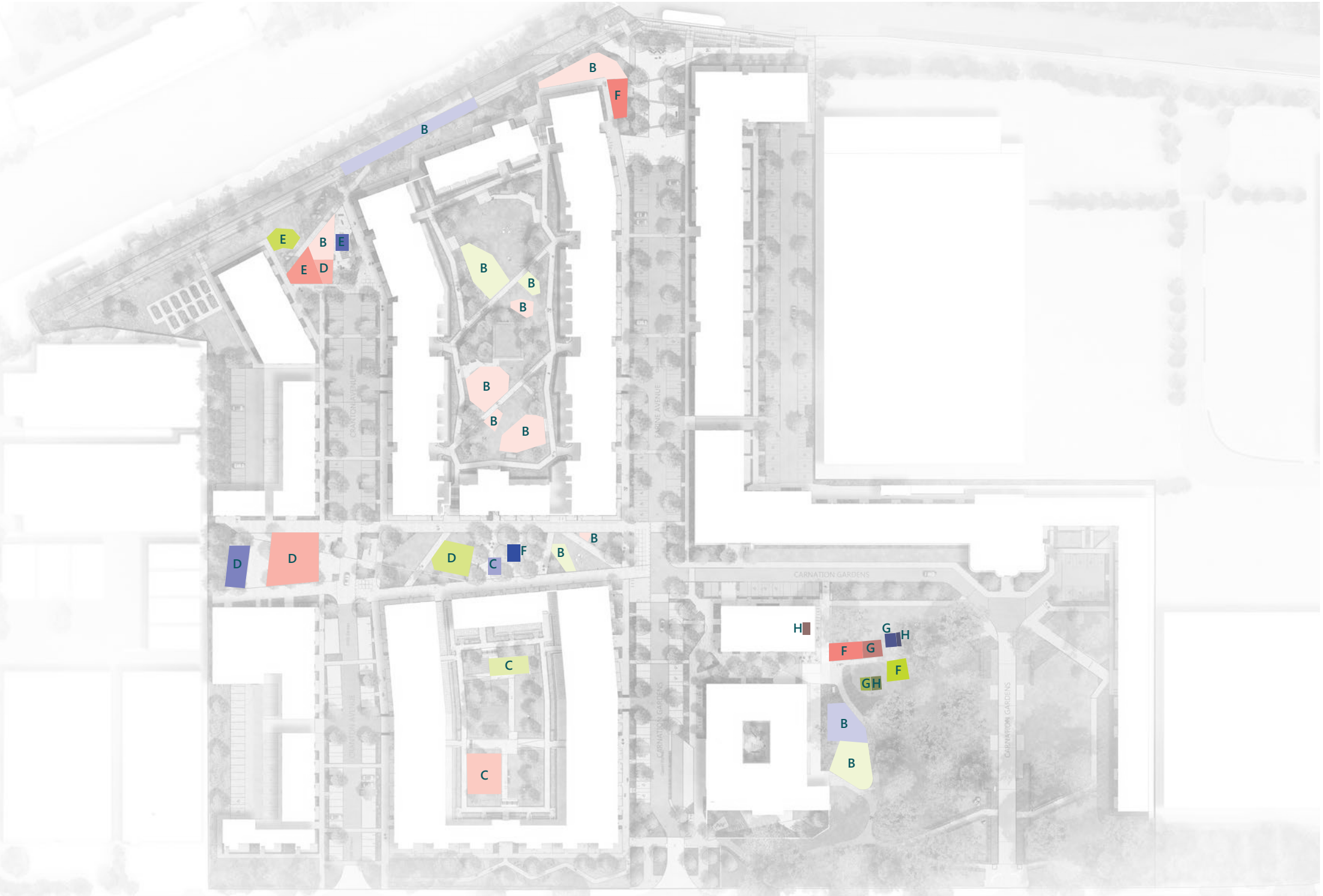
- Landscape equipment
- Seating
- Balancing
- Jumping
- Active and sensory play

12+ YEAR OLD PLAY

- Table tennis
- Chess tables
- Running track
- Swings for social interaction
- Gym equipment

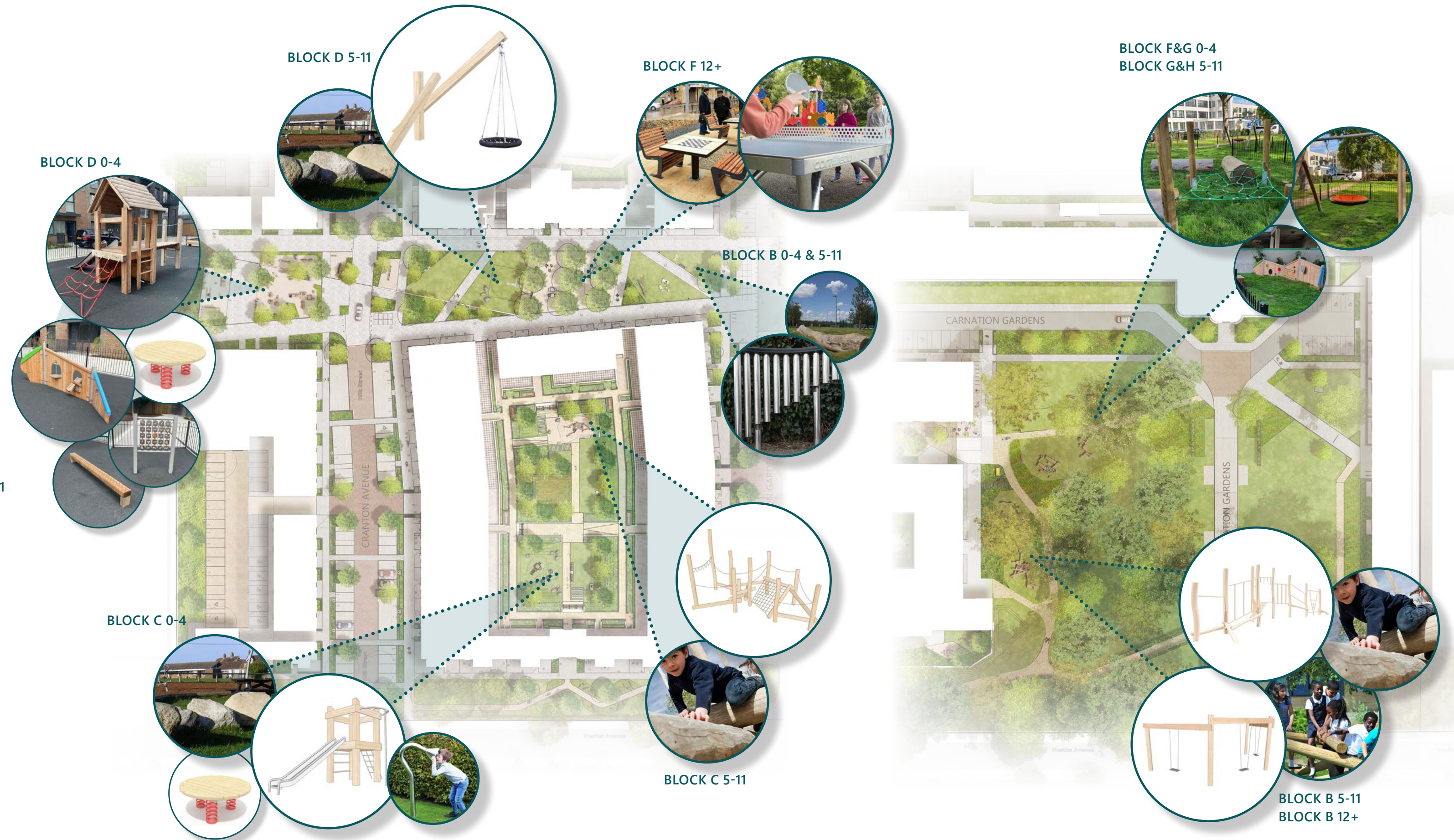
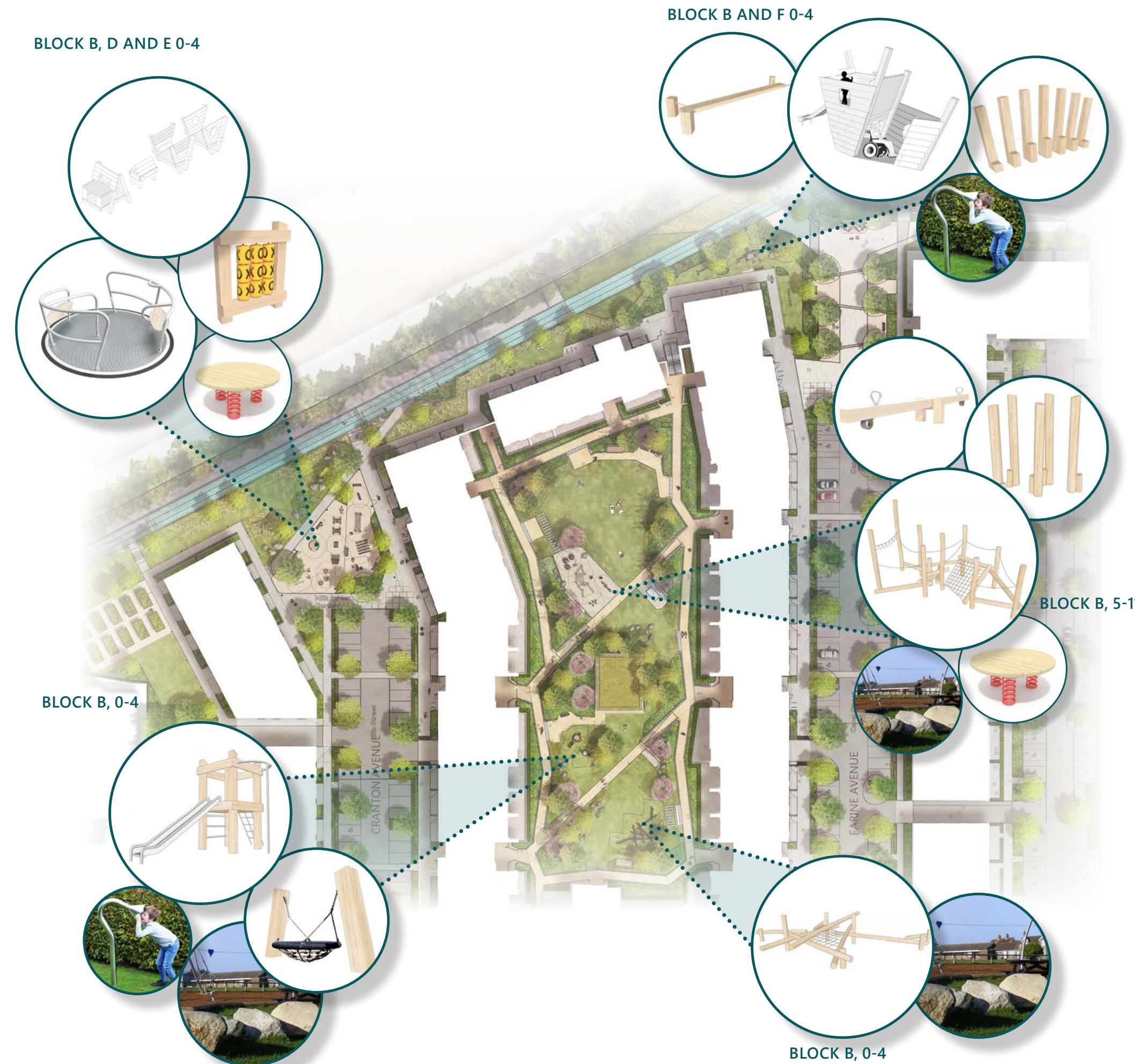
PROPOSED PLAY FIGURES

	Block B	Block C	Block D	Block E	Block F	Block G	Block H	Area sqm
0-4	612	124	318	90	14	4	16	1341
5-11	420	70	118	56	61	10	10	745
12+	296	30	67	43	44	10	2	492
Total	1328	224	503	189	246	60	28	2578



PLAY STRATEGY CONTINUED

The proposed style of play equipment for each of the zones is set out on the following pages. The images are provided to describe the quality and variety of play equipment. Details of the products will be provided as part of the condition discharge information.



3.2 TREE PLANTING

The tree strategy follows the principles set out within the AUS planning applicatuion. The locations of the trees and distribution within the categories has varied but the overall number has increased.

- DAS TREE PLANTING FIGURES
- Street planting no. 107
 - Ornamental planting no. 20
 - Small ornamental planting no. 6
 - Mixed native tree planting no. 110
- Total: 234



AUS TREE PLANTING STRATEGY

- Street planting no. 122
 - Ornamental planting no. 75
 - Small ornamental planting no. 18
 - Mixed native tree planting no. 65
- Total: 280



LATEST ILLUSTRATIVE LANDSCAPE MASTERPLAN

3.3 PROGRAMME OF WORKS WITHIN COMPLETED AREAS OF THE SITE

Outlined below is the programme for revisiting areas of the site already complete to implement agreed changes as part of the recent landscape masterplan.

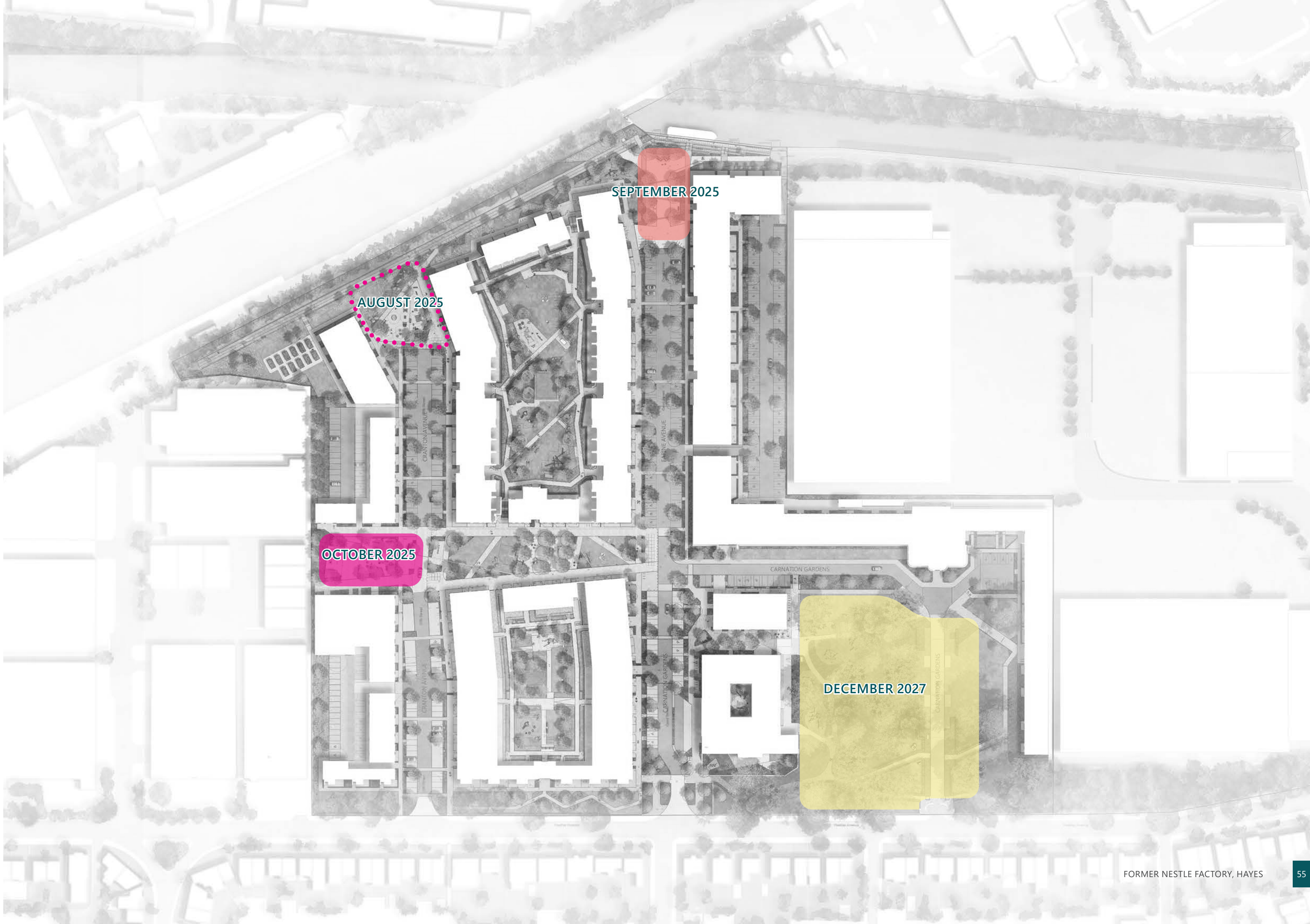
Three key areas are:

- Canal Square area upgrade scheduled in for completion at the end of September 2025
- Play area and planting upgrade between Blocks D and E scheduled for completion end of October 2025
- Carnation Gardens play area scheduled for completion Deember 2027 following completion of block H and Canteen Building

We have included the programme for the completion of Coffee Park as we intend to complete this play area prior to closure and refurbishment of play area between D and E.

KEY:

- CARNATION GARDENS
- CANAL SQUARE
- PLAY AREA BETWEEN BLOCKS D AND E
- COFFEE PARK PLAY AREA





WWW.STUDIO-BOSK.COM

STUDIO BOSK
PLUS X BRIGHTON
LEWES ROAD
BRIGHTON
BN2 4GL

OFFICE@STUDIO-BOSK.COM
01273 044206