

## **FORMER NESTLE FACTORY**

ART AND HERITAGE STRATEGY - JULY 2024



PROJECT NAME	Former Nestle Factory
CLIENT	Barratt West London
DOCUMENT NUMBER	H7232-BOS-SW-XX-RP-AL-90006

REVISION	DATE	REASON	AUTHOR	CHECKED	APPROVED
P01	30-04-2024	Updated following client comments	PF	-	-
P02	05-06-2024	Updated to include RAL & colour options	PF	-	-
P03	07-06-2024	Updated to include comments & remaining items.	PF	OM	OM
P04	06-08-2024	Updated following client comments	PF	OM	OM
P05	29-10-2024	Updated following client comments	RC	PF	OM
P06	20-12-2024	Updated following client comments	RC	PF	OM
P07	10-01-2025	Planning Issue	RC	PF	PF
P08	29-01-2025	Updated Planning Issue	PF	-	-



# CONTENTS

<b>1.0 INTRODUCTION</b>	<b>7</b>	<b>2.6 HERITAGE TRAIL 8B - EXERCISE PIPES</b>	<b>38</b>
1.1 THE DEVELOPMENT	8	REVIEW OF ORIGINAL PROPOSALS	38
SITE LOCATION	8	DESIGN DEVELOPMENT	39
PLANNING HISTORY	8	PROPOSAL	40
1.2 ORIGINAL ART AND HERITAGE STRATEGY	10	<b>2.7 HERITAGE TRAIL 8C - CLIP CLUSTER</b>	<b>42</b>
1.3 COMPLETED ARTWORK 1 - CONNECTED BEANS SCULPTURE	12	REVIEW OF ORIGINAL PROPOSALS	42
1.4 COMPLETED ARTWORK 2 - WALL MURAL	13	DESIGN DEVELOPMENT	43
1.5 COMPLETED HERITAGE TRAIL 3 & 4 - WAR MEMORIAL ARCHIVE COLLECTION	14	PROPOSAL	44
1.6 COMPLETED HERITAGE TRAIL 6 - POLISHED TANK FAMILY	16	<b>2.8 HERITAGE TRAIL 8G - ENGINE BENCHES &amp; TOWER</b>	<b>46</b>
1.7 COMPLETED HERITAGE TRAIL 8E - TROLLEY	17	REVIEW OF ORIGINAL PROPOSALS	46
<b>2.0 REVISED ART AND HERITAGE STRATEGY</b>	<b>19</b>	DESIGN DEVELOPMENT	47
2.1 REVISED ART AND HERITAGE VISION	20	PROPOSAL	48
2.2 SITE WIDE COLOUR WAYS	22	<b>2.9 HERITAGE TRAIL 8H - HISTORICAL IMAGES</b>	<b>50</b>
COLOUR PALETTE	22	REVIEW OF ORIGINAL PROPOSALS	50
2.3 HERITAGE TRAIL 5 - BLUE TANK FAMILY	24	PROPOSAL	51
REVIEW OF ORIGINAL PROPOSALS	24	<b>2.10 HERITAGE TRAIL 8I - HISTORICAL IMAGES</b>	<b>52</b>
DESIGN DEVELOPMENT	25	REVIEW OF ORIGINAL PROPOSALS	52
PROPOSAL	26	PROPOSAL	53
2.4 HERITAGE TRAIL 7 - SPIRALLING AUGER	28	<b>2.11 HERITAGE TRAIL 8J - HISTORICAL IMAGES</b>	<b>54</b>
REVIEW OF ORIGINAL PROPOSALS	28	REVIEW OF ORIGINAL PROPOSALS	54
DESIGN DEVELOPMENT	30	PROPOSAL	55
PROPOSAL	32	<b>2.12 HERITAGE TRAIL 9 - PLAYFUL PIPES</b>	<b>56</b>
2.5 HERITAGE TRAIL 8A - ANGULAR PIPES	34	REVIEW OF ORIGINAL PROPOSALS	56
REVIEW OF ORIGINAL PROPOSALS	34	DESIGN DEVELOPMENT	57
DESIGN DEVELOPMENT	35	PROPOSAL	58
PROPOSAL	36	<b>2.13 HERITAGE TRAIL 10 -MINI TANKS</b>	<b>60</b>
		REVIEW OF ORIGINAL PROPOSALS	60
		DESIGN DEVELOPMENT	61
		PROPOSAL	63
		<b>2.14 SUMMARY</b>	<b>64</b>
		<b>2.15 SECTION 106 AGREEMENT COMPARISON</b>	<b>66</b>





# 1.1 THE DEVELOPMENT

This document has been prepared by Studio Bosk, Chartered Landscape Architects, to describe the Art and Heritage Strategy at the Former Nestle Factory development in Hayes, London.

## SITE LOCATION

The site is located at the Former Nestle Factory, Nestles Avenue, Hayes, UB3 4RF, in the southern part of London Borough of Hillingdon (LBH), West London.

The site is located approximately 500 metres to the south-east of Hayes Town Centre. Bounded to the north by the Great Western Railway Line and Grand Union Canal and to the south by Nestles Avenue. To the west, is the existing Squirrels Industrial Estate, accessed from Vivesh Close and to the east is North Hyde Gardens, which is a public road. To the north-east of the site is Hayes and Harlington Railway Station.

A residential area lies immediately to the south of the site, on the opposite side of Nestles Avenue. The A312 (North Hyde Road) is located approximately 140m to the south of the Application Site and the M4 motorway is a further 1km away. Heathrow is approximately 4km to the south of the Application Site.

Railings enclose the Application Site, with mature trees along the southern frontage of Nestles Avenue and green spaces that were once part of the Application Site's "factory in a garden" setting.

## PLANNING HISTORY

In January 2015 SEGRO acquired the site and partnered with Barratt London to develop a high quality, urban renewal project that will deliver new homes, jobs and public spaces for Hayes to enjoy.

The site has been subject to three major planning applications in recent years, the below sets out the principles of the three applications.

### 1331/APP/2017/1883 INITIAL PLANNING APPLICATION

In 2017 the initial planning application for the site was submitted. The overall masterplan proposal seeks to strike a balance between the re-use of existing buildings, protecting its heritage value, and redevelopment to maximise the potential to deliver jobs, homes, affordable housing and community facilities. The planning permission was granted in June 2018 - Ref: 1331/APP/2017/1883. The application included a sitewide parking provision but was later superseded by the Additional Unit Scheme (AUS) application set out below.

### 1331/APP/2019/3977 AUS PLANNING APPLICATION

In 2019 an detailed full planning application was submitted to increase the number of residential units on the scheme. The application focused on 4 parcels of the originally approved scheme: Block B, Block C, Block F3/F4 and Block H.

### 1331/APP/2022/2553 CANTEEN BUILDING PLANNING APPLICATION

In 2022 a detailed planning application was made for the redevelopment of the former canteen building to provide healthcare facilities, a commercial unit, nursery and reconfigured residential building (Block H) and associated landscaping and access.

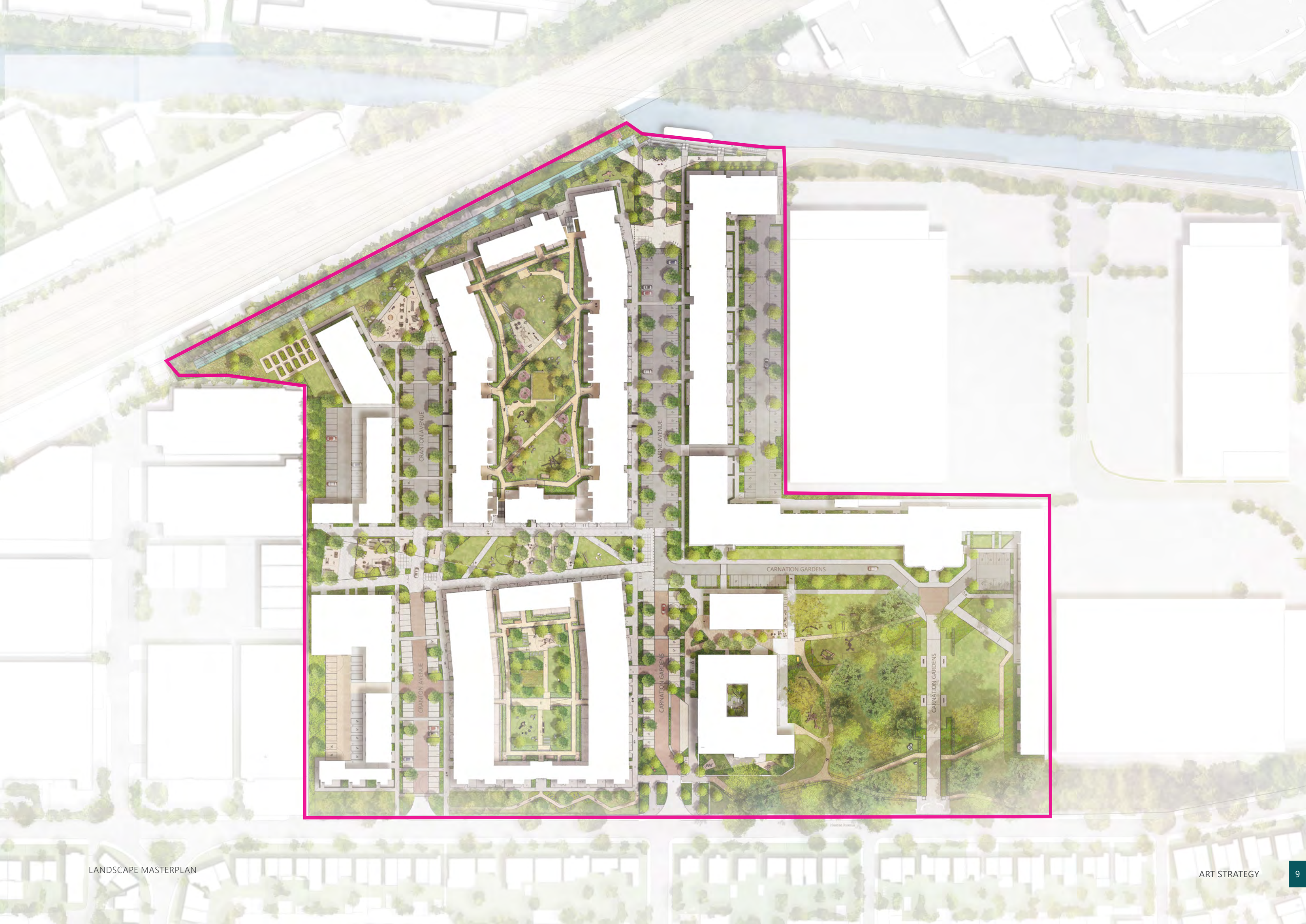
## ART AND HERITAGE STRATEGY

The original strategy was delivered in November 2019.



CGI VIEW OF THE DEVELOPMENT FROM THE CANAL TOW PATH







# 1.2 ORIGINAL ART AND HERITAGE STRATEGY

## LOCATION PLAN

The location plan on the opposite page shows the locations for the artwork and heritage items shown within the original strategy. The diagram has been updated to highlight the items that have already been installed. They are outlined with a solid green line. Items that have not yet been installed are shown with a dashed outline and faded.

The completed items are described in more detail over the coming pages but the scale and quality of what has been installed shows how committed Barratt West London are to the integration of high quality artwork into the development.

## REVIEW OF THE EXISTING STRATEGY

A careful review of the remaining items to be completed from the original Art and Heritage strategy has been undertaken taking into account changes to the scheme and the development of the latest landscape proposals. A proportion of the art installations included part of the original strategy and trail are to be retained as their artistic and historical relevance was deemed to provide a positive contribution to the community.

The project team have determined that some of the previous proposals could provide a stronger message or have greater visual prominence if used in alternative ways or locations. A review of the stored items has also highlighted alternative elements that would make a positive impact on the strategy. The new proposals reflect the fact that some of the items have been used within the Museum within the main building.

The new proposals for the remaining items to be installed are set out within Chapter 2 of the document.



CGI OF COFFEE BEAN SCULPTURE WITHIN WALLIS GARDENS

### Completed works:

- 1. Connected Bean Sculpture
- 2. Wall Mural
- 3/4. War Memorial Archive
- 6. Polished Tank Family
- 8e. Trolley

### Remaining Proposals:

- 5. Large Vista Pieces - Blue Tank Family
- 7. Play Installation - Play Pipes
- 8a. Site \history narrative trail - Angular Pipes
- 8b. Site \history narrative trail - Pipes Running Track
- 8c. Site \history narrative trail - Paper Clips
- 8d. Site \history narrative trail - Spring Wall Mounted
- 8f. Site \history narrative trail - Walking Whisks
- 8g. Site \history narrative trail - Engine Benches
- 8h. Site \history narrative trail - Spanner Wall Mounted
- 8i. Site \history narrative trail - Wheel Disks
- 8j. Site \history narrative trail - Triangle Tiles



# ART PROGRAMME Location Plan



2. Wall Mural



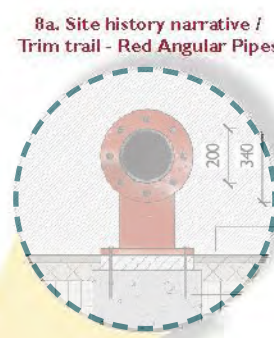
5. Large Vista Pieces - Blue Tank Family



8b. Site history narrative / Trim trail - Red Pipes Running Track



7. Play Installation - Play Pipes



8a. Site history narrative / Trim trail - Red Angular Pipes



8h. Site history narrative / Trim trail - Spanner Wall mounted



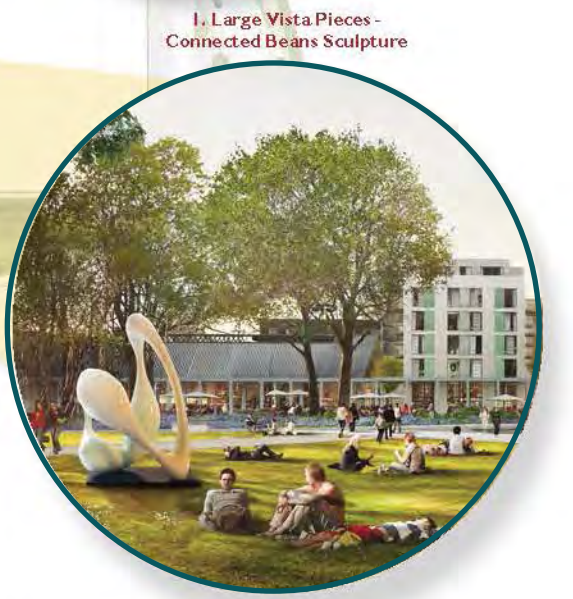
8f. Site history narrative / Trim trail - Walking Whisks



8c. Site history narrative / Trim trail - Paper Clips



3&4. War Memorial - Archive Collection



1. Large Vista Pieces - Connected Beans Sculpture



6. Gateway Pieces - Polished Tank Family



8e. Site history narrative / Trim trail - Trolleys



8d. Site history narrative / Trim trail - Spring Wall Mounted



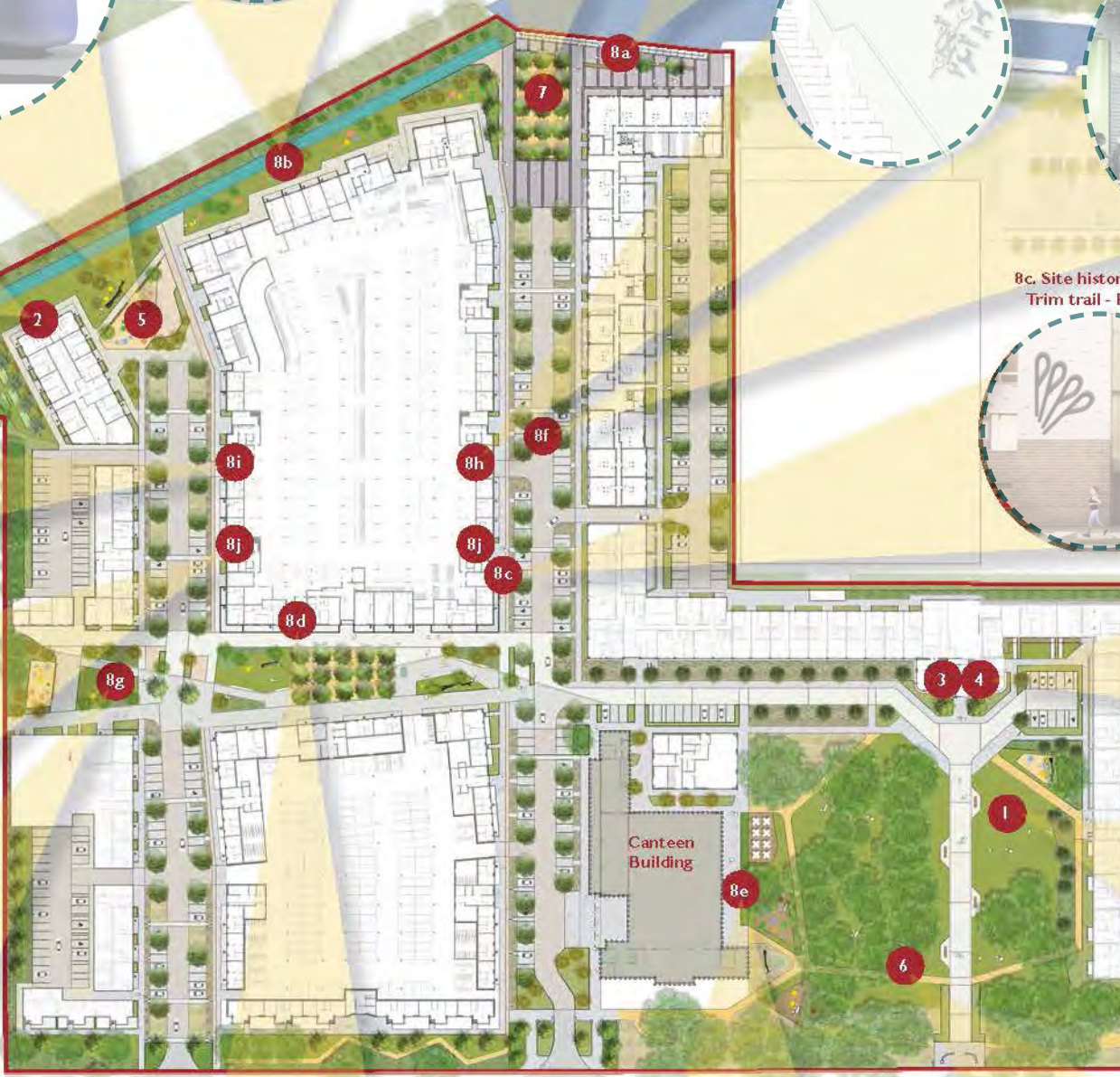
8j. Site history narrative / Trim trail - Triangle Floor Tiles



8g. Site history narrative / Trim trail - Engine Benches



8i. Site history narrative / Trim trail - Wheel Disks



Canteen Building

Boundary red line (Residential Land)

LOCATION PLAN FROM ORIGINAL ART STRATEGY



1.3 COMPLETED ARTWORK 1 - CONNECTED BEANS SCULPTURE

The Connected Beans Sculpture is located in Wallis Gardens.

This is a large (up to 2.8m tall) eye catching art installation which sits upon a solid plinth standing proud and centred on the lawn out side of residential block F1 & G.

This intervention speaks to the rich history of the site in manufacturing; in particular the production of chocolate as part of the Nestle factory.



COMPLETED ARTWORK  
FORMER NESTLE FACTORY

Connected Beans Sculpture

**Description**

- Creative piece of modern art inspired from the factory history and coffee beans.
- Material: bronze
- Finish: 2K system sealed with two coats of 2K lacquer.

**Dimension**

- Sculpture stands 2800mm at its highest point. Base stands 100mm above ground.

**Location**

- Wallis Gardens

**Process - Scope**

- Draw, scope and cost
- Technical specification advice required
- Seek approval

**Creative Lead and Other Team Members**

- Oliver Barratt
- Technical support
- Lighting Specialist

EXTRACT FROM PREVIOUS ART STRATEGY



Connected Beans Sculpture - Option A



Connected Beans Sculpture - Option B



1.4 COMPLETED ARTWORK 2 - WALL MURAL

END GABLE ART COMMISSION

2

Wall Mural



**Description**

- Block E - North end wall painted mural
- Creative Uniteds' wall mural celebrating the life of Eugen Sandow, bodybuilder and former World's Strongest Man 1889, who credited chocolate as source of his strength and built the first chocolate factory that stood on the Nestle Factory site.

**Dimension/ Technical Scope**

- 2 mist coats of masonry paint onto brick as primer
- Projected outline through stencil production
- Painting from cradle platform from top down

**Location**

- Block E - North end wall/ C

EXTRACT FROM PREVIOUS ART STRATEGY



This 'super sized' artwork - 'Wall Mural' is installed on the northern elevation of residential Block E. The painted artwork , which stands at 29m wide by 172m tall is intended to attract attention and provide a clear insight into the history and context of the site.

The intervention celebrates the life of Eugen Sandow - former 'World's Strongest Man' and the first Nestle entrepreneur.



COMPLETED ARTWORK



1.5 COMPLETED HERITAGE TRAIL 3 & 4 - WAR MEMORIAL ARCHIVE COLLECTION

As set out in the original Art and Heritage strategy document, items 3 and 4 - a war memorial and an archive collection memorabilia has been successfully installed as a within the entrance lobby of the former Nestle factory.

A curated suite of artefacts found on site have been carefully cleaned and displayed creatively for residents and visitors to enjoy.

The items, ranging from historical posters through to display dials and spanners most certainly from manufacturing equipment provide a strong visual reference to the context of the site.

34

War Memorial - Archive Collection



**Description**

- Creation of a permanened museum by integrating memobilia found on side

**For 'Smell' theme**

- The use of odour (Chocolate & Coffee) will be incorporated in some public events within the Museum. For 'smell' theme, the cocoa & coffee beans would be stored in the little storage boxes (Please refer to Image 02, 03 & 04) with Perspex lid to smell.

**Dimension (LxDxH)\***

- 4640 x 13200 mm

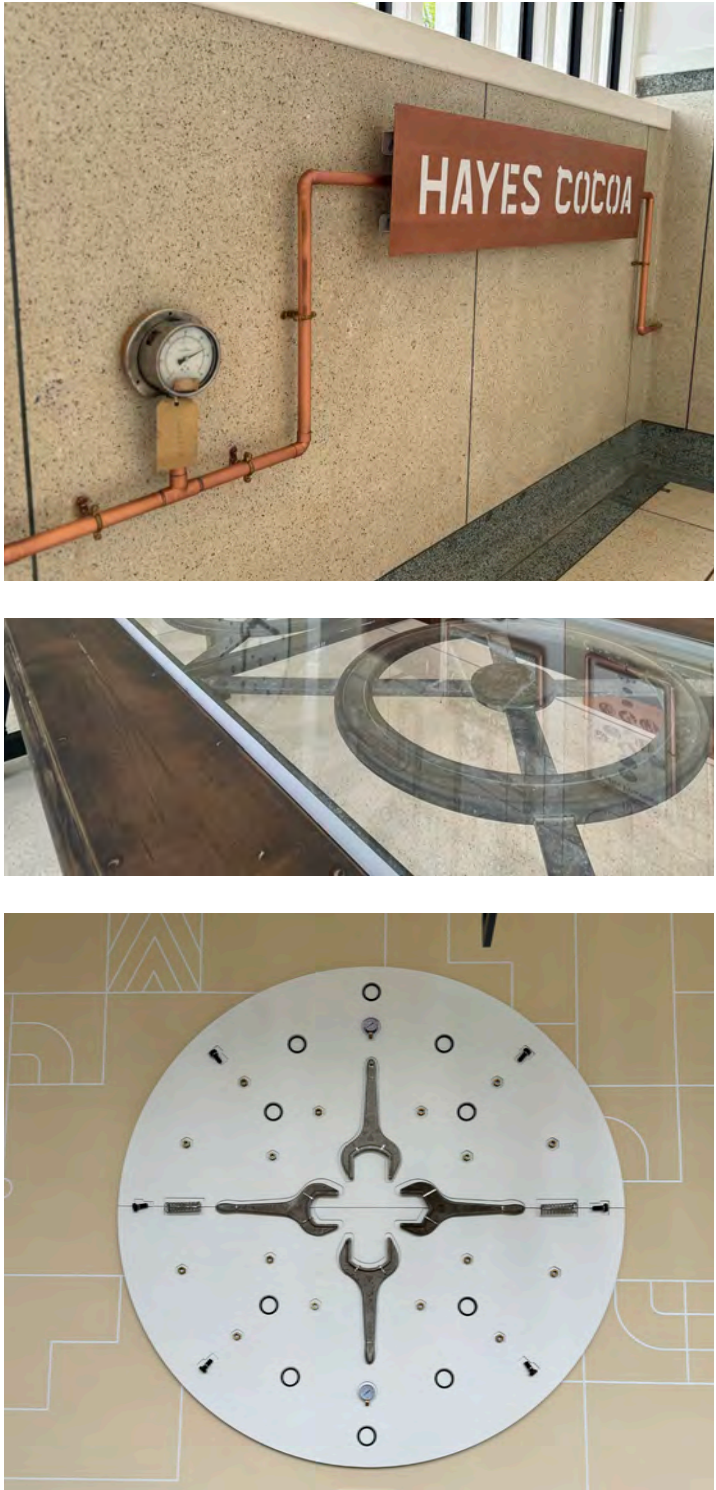
**Location**

- Entrance Lobby former Nestle factory

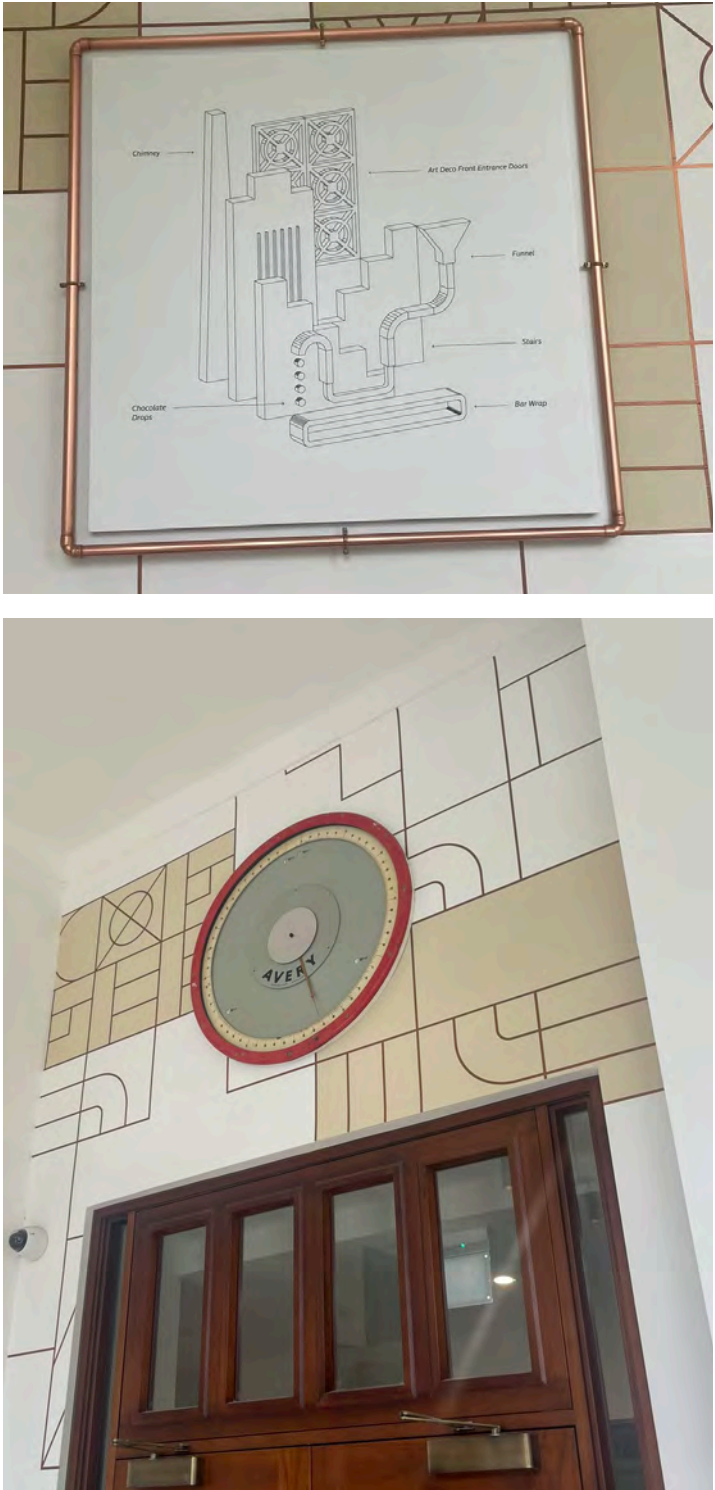
**Process - Scope**

- Draw, scope and cost
- Salvage now to store – then check value.
- Technical specification advice required re longevity, surface treatment etc
- Seek approval

EXTRACT FROM PREVIOUS ART STRATEGY



COMPLETED MUSEUM ITEMS







ARTWORK

Coffee Processes

An infographic titled "Coffee Processes" showing a vertical sequence of 12 circular icons representing the steps of coffee production, from harvest to cupping.

An infographic showing various coffee-making methods and equipment, including manual grinders, pour-over setups, and espresso machines.

Coffee Making

An infographic titled "Coffee Making" showing various coffee-making equipment and steps, including grinders, brewers, and cups.





1.6 COMPLETED HERITAGE TRAIL 6 - POLISHED TANK FAMILY

The sculptural 'Standing tanks' have been positioned as a small 'family' straddling a key route through Wallis Gardens.

These large scale historical artefacts have under gone an extensive adaptation process of cutting, cleaning and polishing in order to be installed on site. The tanks create a bold feature with the polished surfaces reflecting surrounding tree canopies.

GATEWAY PIECES  
6  
Polished Tank Family



**Description**

- Standing tanks, distributed in 'family clusters' around the site, and adapted as sculptural pieces for play, climbing, sitting, shelter etc
- 13 / 14 tanks total, in groups of 4
- Landscape surfaces to suit, with required adjustments to landscape design
- Foundations to suit
- Specialist Lighting
- Potential to include found-object ladders

**Dimension and Details**

- Please check survey and detail drawings attached:
- FNF - Art Programme - Sheet - A\_02-100 Series
- FNF - Art Programme - Sheet - A\_03-100 Series

**Location**

- Wallis Garden - Main cluster (Location A)

**Process - Scope**

Adaptation process includes:

- Cutting connections
- Making safe and H&S advice required, incl cleaning scope if required
- Creating foundations
- Cutting and joining
- Seek approval

EXTRACT FROM PREVIOUS ART STRATEGY



COMPLETED ARTWORK



# 1.7 COMPLETED HERITAGE TRAIL 8E - TROLLEY

SITE HISTORY NARRATIVE / TRIM TRAIL

Trolley8e



Description

- One Trolley to be mounted in one location on the ground

Dimension (LxDxH)\*

- 1600x1000 mm

Location

- Ground mounted, Wallis Garden or Canteen Building

Process - Scope

- Draw, scope and cost
- Salvage now to store – then check value
- Technical specification advice required re. longevity; surface treatment etc
- Seek approval

Creative Lead and Other Team Members

- Tim Makower
- Technical support



A single yellow trolley has been mounted upon a concrete plinth within Wallis Gardens as a reference to the manufacturing processes in the production of chocolate at Nestle. This trolley has been placed within the public domain with without significant repairs and repainting to emphasise the historic nature of the item.







## **2.0 REVISED ART AND HERITAGE STRATEGY**

## 2.1 REVISED ART AND HERITAGE VISION

Barratt West London remain committed to delivering a series of high quality installations across the development. The Nestlé Factory has been a central feature of Hayes' industrial landscape for over a century, representing a significant chapter in the area's economic and social history. As a former hub of manufacturing, it has left an indelible mark on the community's identity. The aim of the new strategy is to celebrate the site's rich industrial heritage while creating a contemporary and resilient living environment, seamlessly integrating art and history into the fabric of the community.

### ORIGINAL STRATEGY REVIEW

A careful review of the original Art and Heritage strategy has been completed taking into account changes to the proposals and the development of the latest landscape proposals. The project team determined that a number of the previous proposals could provide a stronger message or have greater visual prominence if used in alternative locations. A review of the stored elements has highlighted alternative elements that would make a positive impact on the strategy. The new proposals also reflect the fact that some of the items have been used within the Museum within the original building.

### HISTORICAL ASSETS

The intention is to follow the principles of the original Art and Heritage strategy and emphasise the sites historical assets. The machinery once pivotal to the factories operations will be re-purposed into sculptures connecting the new development to the sites past. Distinctive factory structures will be incorporated in the new proposals. The integration of the artwork will acknowledge the factory's role as a community cornerstone, celebrating the workforce and local families whose lives intertwined with the factory's operations.

### APPROACH

The strategy will intertwine the below elements to create a cohesive approach across the site.

- Large sculptures crafted from the factory's machinery will stand as both artistic and historical monuments, symbolizing transformation and continuity.
- A historical trail will guide visitors through the development with interpretation panels explaining the site's history.
- Paintings and murals will reflect the history of the local area.
- Pieces that invite interaction will foster engagement, allowing residents to connect with the site's history in a tangible way.

Prominent areas of the site will host landmark sculptures that create focal points for community interaction, serving as visual anchors enabling navigation around the site. The art will be seamlessly integrated into the public realm and communal spaces.

The intention is to retain the same number of pieces across the development. Some of the items will remain internal within the communal cores but the intention for the rest of the items is to focus on larger scale installations within the landscape that will provide a significant contribution to the public realm. Signage will be provided for all elements to describe the historical context of the item.

The revised strategy diagram on the opposite page highlights the new proposals and locations for each of the strategy items. The new proposals are outlined with a solid boundary and a colour arrow to the artwork location. For continuity we have included the completed artwork in a faded circle with a dashed outline.

Completed works:

- 1. Connected Bean Sculpture
- 2. Wall Mural
- 3/4. War Memorial Archive
- 6. Polished Tank Family
- 8e. Trolley

Revised Proposals

- 5: Blue Tank family
- 7: Spiralling Augers
- 8A: Angular Pipes
- 8B: Seating Pipes
- 8C: Clip Cluster
- 8G: Engine Benches & Sculpture
- 8H: Historical Artwork
- 8I: Historical Artwork
- 8J: Historical Artwork
- 9. Playful Pipes
- 10. Mini Tanks



2. Wall Mural \*



5. Blue Tank Family



8B. Seating Pipes



7. Spiralling Augers



8A: Angular Pipes



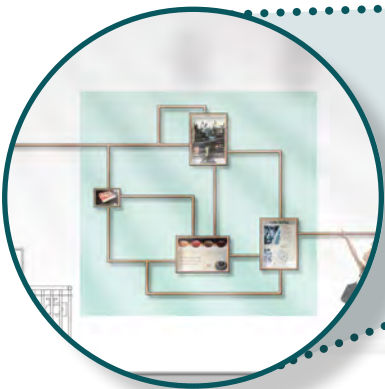
8H. Historical Artwork



8I. Historical Artwork



8J. Historical Artwork



3/4. War Memorial Archive \*



1. Connected Bean Sculpture \*



8E. Trolley \*



8G. Engine Benches



8G. Engine Sculpture



9. Playful Pipes



10. Mini Tanks



8C. Clip Cluster



6. Polished Tank Family \*



\* Items completed



## 2.2 SITE WIDE COLOUR WAYS

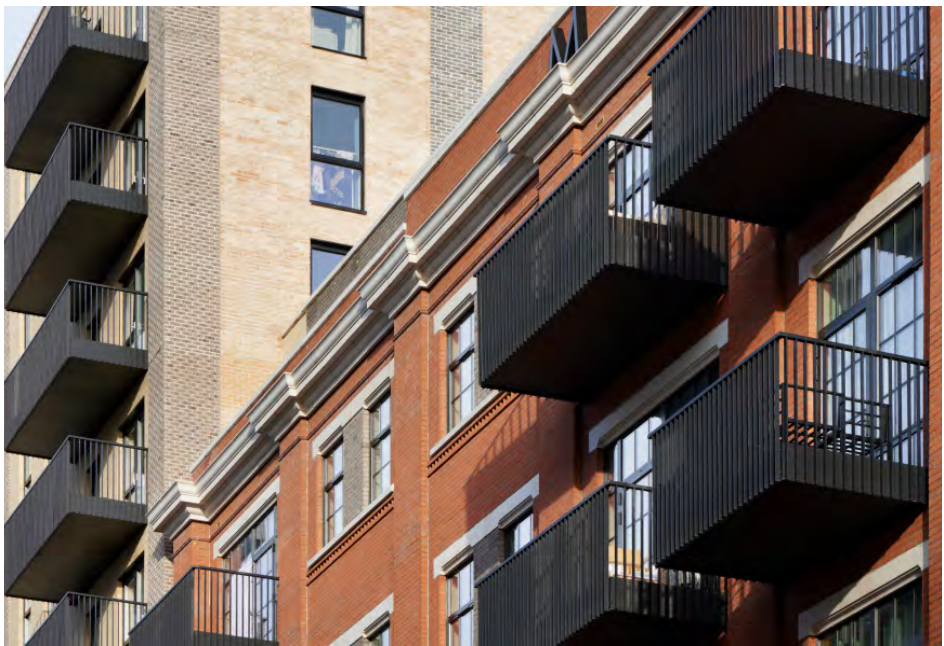
### COLOUR PALETTE

The proposed palette swings through a kaleidoscope of soft tones from a cool grey, into mint green/ blue, buff gold and through to muted oranges and soft pinks.

This suite of colours has evolved through an extensive study of the heritage buildings and artefacts found across the site. Discussions within the design team and the client representative have elicited a broad selection of hues which have been carefully narrowed down to 7no. colours which are felt to best represent both the heritage cluster as well as the newer architectural additions of the site.

The proposal is that these colours will repeat themselves throughout the site, acting as wayfinding queues navigating residents and visitors alike aswell as visual anchors.

Not only does this palette provide direction, the repetition of a small palette of colours contributes to bolstering a sense of cohesion across the site and the various buildings connecting the public realm with various communal spaces.



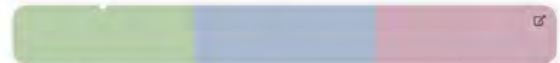




**Split Complement**  
Split-complementary colors which use adjacent colors of this color's complementary color.



**Triad**  
Triad colors which pull themselves in a triangle across the color wheel.



**Tetrad**  
Tetrad colors which pull themselves in a square shape across the color wheel.





# BLUE TANK FAMILY

## 2.3 HERITAGE TRAIL 5 - BLUE TANK FAMILY

### REVIEW OF ORIGINAL PROPOSALS

#### 5 BLUE TANK FAMILY

The original strategy outlines item 5 (Blue Tank Family) be proposed for location within the Coffee Park play space. The principle of retaining the tanks within the strategy is seen as positive, they will form a strong visual presence within the site and provide a connection to the tanks already installed in Wallis Gardens. However, upon thorough evaluation of the area, several considerations have emerged that necessitate a re-evaluation of this design, more specifically the location of the tanks.

Given the public nature of the play space and users typically being of a younger age category it has been necessary to consider the safety of residents using the play area as well as the durability of the tanks to withstand the interrogation and manipulation expected of young and inquisitive children.

All required adaptation will have to meet the rigorous Health and Safety standards particularly when in the context of a play space. There are concerns regarding the susceptibility of the valves and caps mounted to the surface of the tanks at low level to vandalism and climb-ability. There is also concerns that these protrusions could cause injuries to children.

There is the opportunity to move the tanks so that they are in a more prominent location within the space. Retaining the view of the tanks from the south but also improving the views from the east and west on the running track.

LARGE VISTA PIECES  
**5** Blue Tank Family



**Description**

- Standing tanks, distributed in 'family clusters' around the site, and adapted as sculptural pieces for play, climbing, sitting, shelter etc.
- 13 / 14 tanks total, in groups of 3
- Landscape surfaces to suit, with required adjustments to landscape design
- Foundations to suit
- Specialist Lighting
- Potential to include found-object ladders

**Dimension and Details**

- Please check survey and detail drawings attached!
- FNF - Art Programme - Sheet - A\_02-100 Series
- FNF - Art Programme - Sheet - A\_03-100 Series

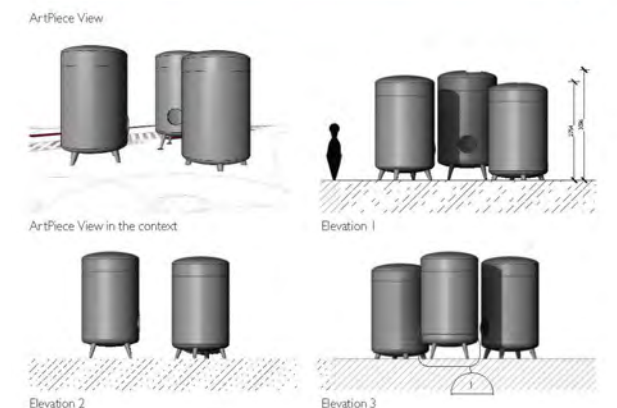
**Location**

- Milk Street Garden (Location B)

**Process - Scope**

Adaptation process includes:

- Cutting connections
- Making safe and H&S advice required, incl cleaning scope if required
- Creating foundations
- Cutting and joining
- Seek approval



EXTRACT FROM PREVIOUS ART STRATEGY FOR 8F WHISKS



## DESIGN DEVELOPMENT

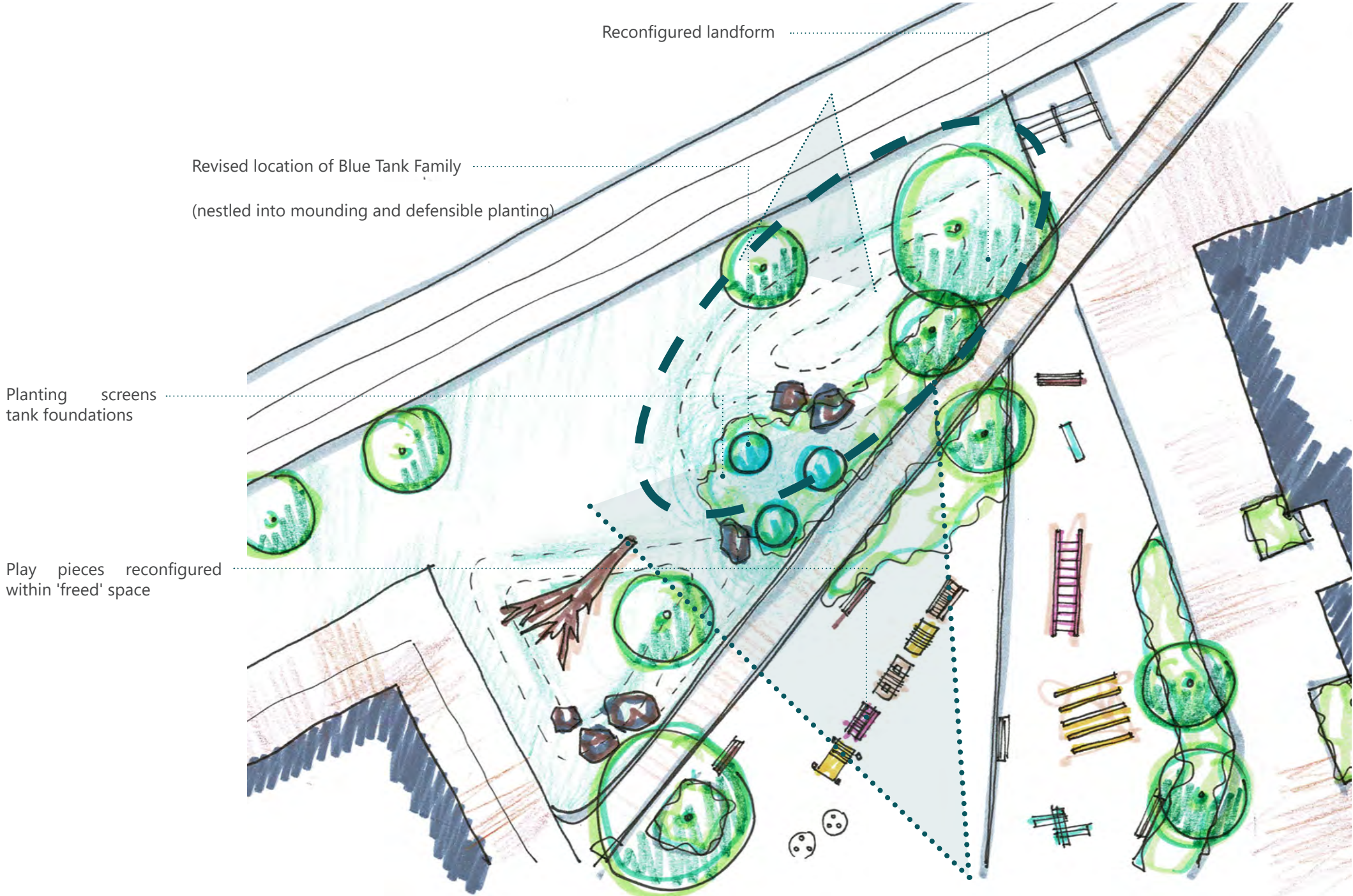
During the design development phase, careful consideration was given to the incorporation of blue tanks in the play space associated with the Coffee Park. It quickly became clear that there was a more pivotal position that the tanks could hold further north in the site (as referenced by the sketch plan).

The tanks are to be positioned within the gradual mounding of a land-form immediately to the north of a pedestrian link which extends through the Coffee Park/ Milk Street Garden connecting to Block B. The revised position of the three blue tanks on the edge of a proposed mound further elevates what is already a large scale sculpture as part of the art trail. This will help to further improve their visibility within the site; along key vistas such as from the running track and up Milk Street as well as the numerous views from residential units in both neighbouring blocks. The revised strategic position reminds residents and visitors alike of the site's enormous historical and cultural influence .

A dense surrounding of carefully curated perennial planting rich in biodiversity and specially selected stone boulders will both protect the base of the tanks from antisocial behaviour and provide protection to prevent residents injuring themselves on the tanks.

The same planting scheme 'jumps' over the bisecting pathway into the play area reinforcing the connection of both two areas. The presence of a diverse planting mix within the play area both educates and promotes the principles of soft landscaping and its importance.

By taking the decision to reposition the tanks to the north of the pathway (outside of the playspace) visibility is improved but also 'frees up' space within the play area for the proposed equipment and provides the opportunity to include an additional piece of formal play.





# BLUE TANK FAMILY



LOCATION PLAN

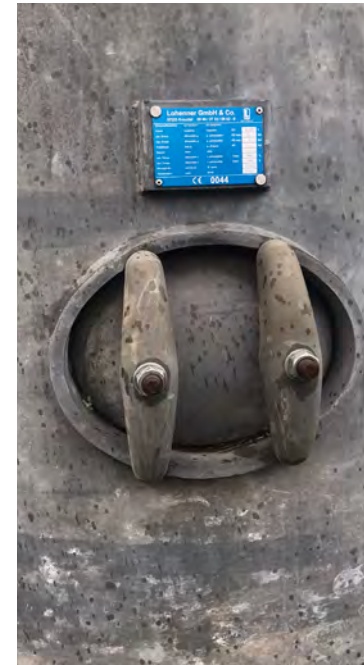
## PROPOSAL

The design proposal for the tanks remains much the same as in the previous Art and Heritage strategy strategy. A bold blue colour will be employed to accentuate the artwork, ensuring its presence is both striking and impactful. This deliberate choice of colour serves to highlight the sculptural elements, making a bold and vibrant statement connecting into the vibrancy of the adjoining play equipment.

Initially, the tanks were to be located centrally within the Coffee park play area. However, upon review, it was determined that positioning them within the play space would prohibit a more flexible play and not optimise their visibility from a variety of long vistas through the site. Historical artefacts of this nature and scale should to be positioned prominently.

The design proposes the tanks sit straddling a gently mounding landform and nestled into a dense planting scheme. This offers residents and visitors an opportunity to experience the artwork at a different angle and against the backdrop of soft landscape. This thoughtful integration enhances their aesthetic appeal but also contributes to the playful nature of the immediate space.

*Technical requirements; Tank to be mounted to in situ concrete footing, strategically positioned within mounding. Tanks to have additional brackets fixed to base of existing fee to ensure that the foundation can be installed 300mm below ground to provide soil volume for planting. Any moving parts or removable elements are to be welded fixed. Tank to be cleaned degreased and painted.*







PRECEDENT IMAGES OF TANKS IN LANDSCAPE



SECTION A-A'



SECTION B-B'



# SPIRALLING AUGER

## 2.4 HERITAGE TRAIL 7 - SPIRALLING AUGER

### REVIEW OF ORIGINAL PROPOSALS

#### 8F WALKING WHISKS

The envisioned incorporation of whisks, as detailed in item 8f of the original art strategy, aimed to introduce a bespoke lighting unit featuring a turning wheel. However, upon thorough evaluation of the existing augers, several considerations have emerged that necessitate a re-evaluation of this design.

There are concerns regarding the susceptibility of the rotating element at the top of the augers to vandalism if the wheel is spun too vigorously. Given the public nature of the residential development, ensuring the durability and longevity of the artwork is paramount.

The practicality of the proposed lighting unit within the road and car parking areas must be addressed. It is essential that the lighting in these areas provides adequate illumination to ensure safe vehicle manoeuvring at night. However, the rotating nature of the light may inadvertently move the light source away from its intended location, compromising visibility and safety.

The Art and Heritage strategy advocates for solar-powered lighting atop the augers. However, logistical constraints arise with regards to housing the necessary solar panels atop the rotating lights. The structure of the augers presents challenges in drilling a hole through the central pole to accommodate lighting cables, particularly if the lights were to be replaced with powered alternatives.

#### 7 PLAY PIPES

The proposed installation of play pipes, as outlined in item 7 of the original art strategy, aimed to introduce a bespoke playable sculpture into the canal square. However, upon thorough examination of the existing pipes, several factors have led to reconsideration.

It has been acknowledged that the play pipes may not achieve the desired impact as a statement artwork within the canal square. Concerns have been raised regarding their ability to sufficiently enhance the aesthetic appeal and cultural significance of the space.

The decision to install the pipes within a public square presents inherent risks. The varying heights of the pipes pose potential hazards, with low-level items possibly creating tripping hazards and taller items posing a risk of collision for pedestrians or cyclists. Such safety concerns must be carefully addressed to ensure the well-being of individuals frequenting the area.

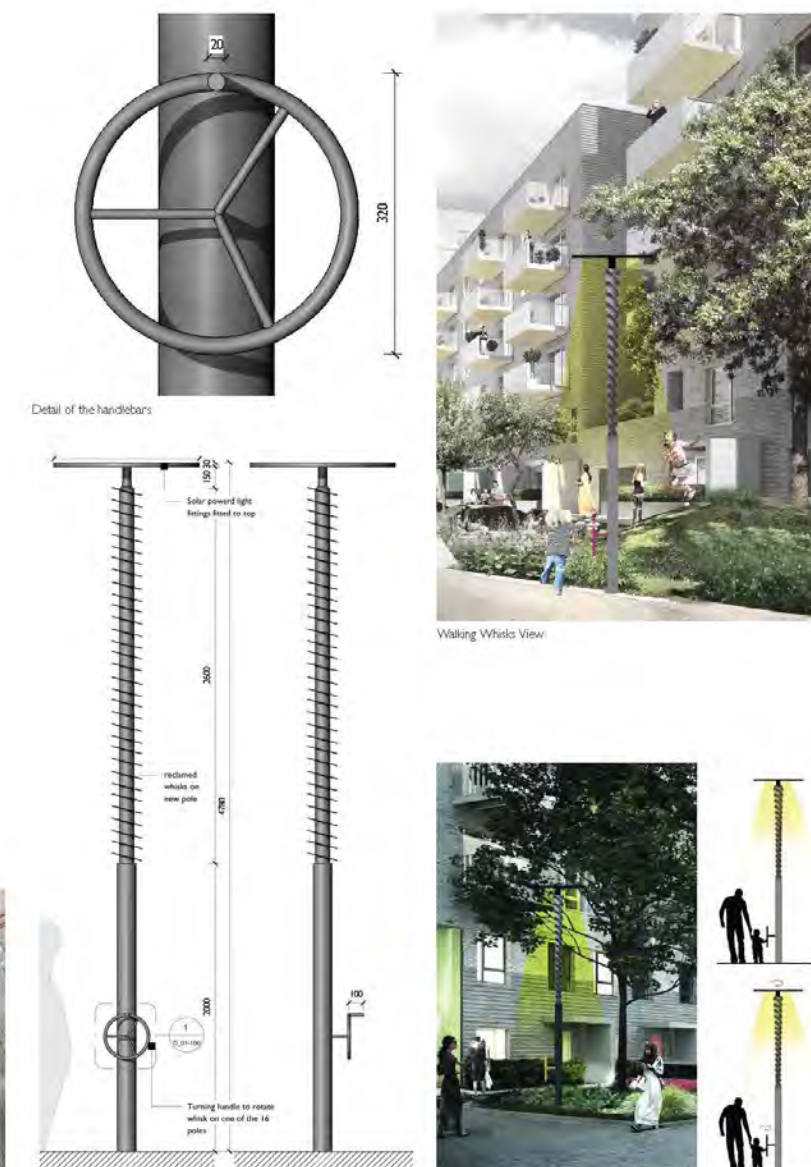
Should the pipes be utilized for play purposes, significant adaptations would be required both to the pipes themselves and to the surrounding setting to comply with safety regulations for play equipment. These alterations could potentially detract from the overall coherence and integrity of the artistic vision for the canal square.

#### NEXT STEPS

Given these considerations, alternative options for incorporating the Augers and Pipes into the scheme have been explored to ensure the viability and effectiveness of the artwork within the residential development. In this section we will put forward alternatives for the works within canal square (location 7).



EXTRACT FROM PREVIOUS ART STRATEGY FOR 8F WHISKS





PLAY INSTALLATION  
Play Pipes



**Description**

- Sculptural pipe installations within landscape along Northern edge, for incidental play, sitting etc
- Possible inclusion of dials etc
- Use of colour TBC

**Dimension (LxDxH)**

- Please check survey and detail drawings attached:
- FNF - Art Programme - Sheet - E\_01-100 Series

**Location**

- Canal Square

**Process - Scope**

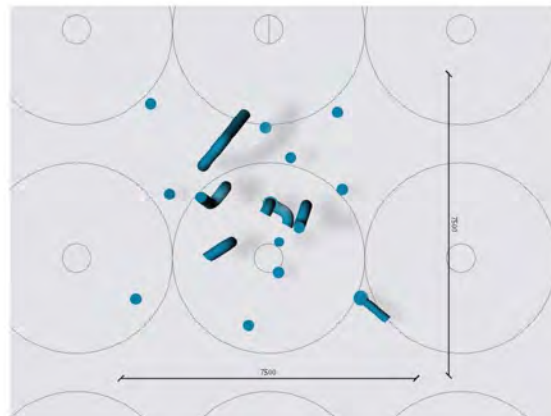
- Draw, scope and cost
- Technical specification advice required re structure, fixings, cleaning, coatings etc
- Define salvage value, within cost, if any
- Seek approval
- Salvage during demo contract

**Creative Lead and Other Team Members**

- Mariana Heilmann
- Oliver Barratt
- Cameo input re landscape
- Lighting Specialist etc



ArtPiece View



IMAGES OF AUGERS IN STORAGE ON SITE



EXTRACT FROM PREVIOUS ART STRATEGY FOR 7 PLAY PIPES



# SPIRALLING AUGER

## DESIGN DEVELOPMENT

During the design development phase, careful consideration was given to the incorporation of augers atop posts to create a bold sculptural element in the new square. The quantity and scale of the augers prompted early discussions, leading to a consensus that they should be prominently featured within one of the main external spaces across the entire site, serving as a celebration of the site's rich history.

Understanding the functional significance of the augers within the former Nestle factory—circulating granular material around the site—proved instrumental in driving the design aesthetic. With this in mind, a decision was made to mount the augers in a vertical direction, intending to highlight their role in material movement between locations.

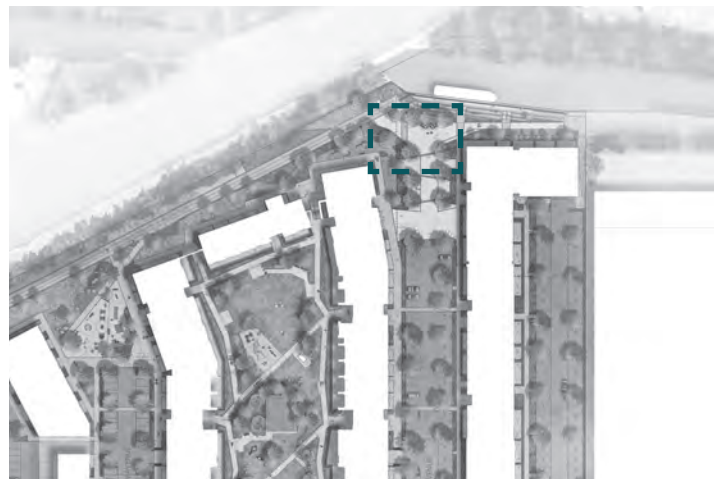
The proposal also seeks to integrate lighting into the augers at high levels, extending their visual impact from daytime into the evening. This addition not only enhances the landscape value but also contributes to the illumination of the public space, thereby improving safety and social surveillance.

By embedding the spiralling augers into the paving, we ensure that the metalwork can be appreciated in its entirety, without the distraction of surrounding planting. Furthermore, mounting the augers at various heights enhances their impact and reinforces their diversity within the space, enriching the overall aesthetic experience for residents and visitors alike.

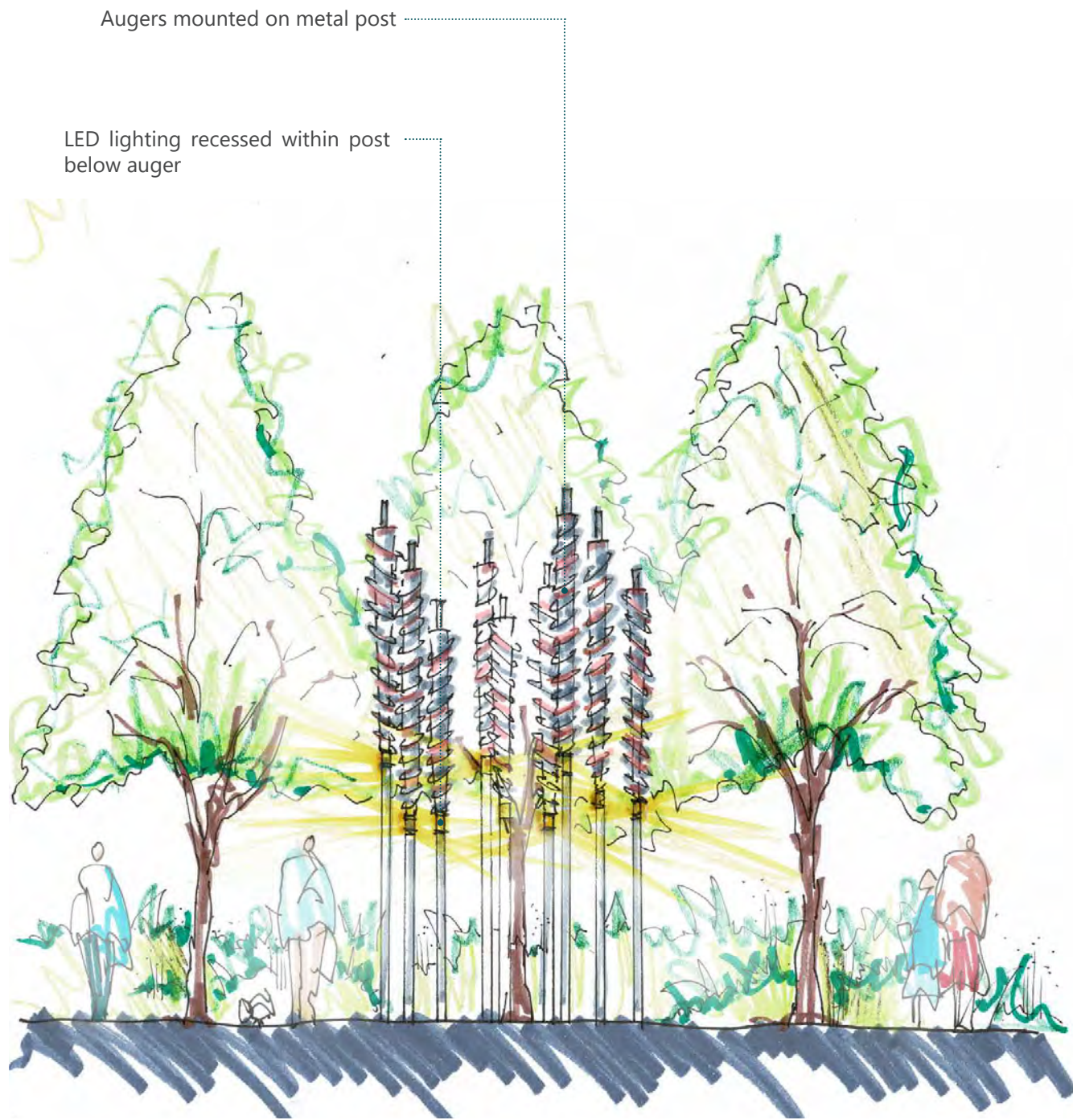
An alternative option has been considered to complement the installation of the main group of augers. This option involves adding planting at the head of the square to create a soft landscape setting that frames the sculptural elements.



PRECEDENT IMAGES OF VERTICAL SPIRE ARTWORK IN LANDSCAPE



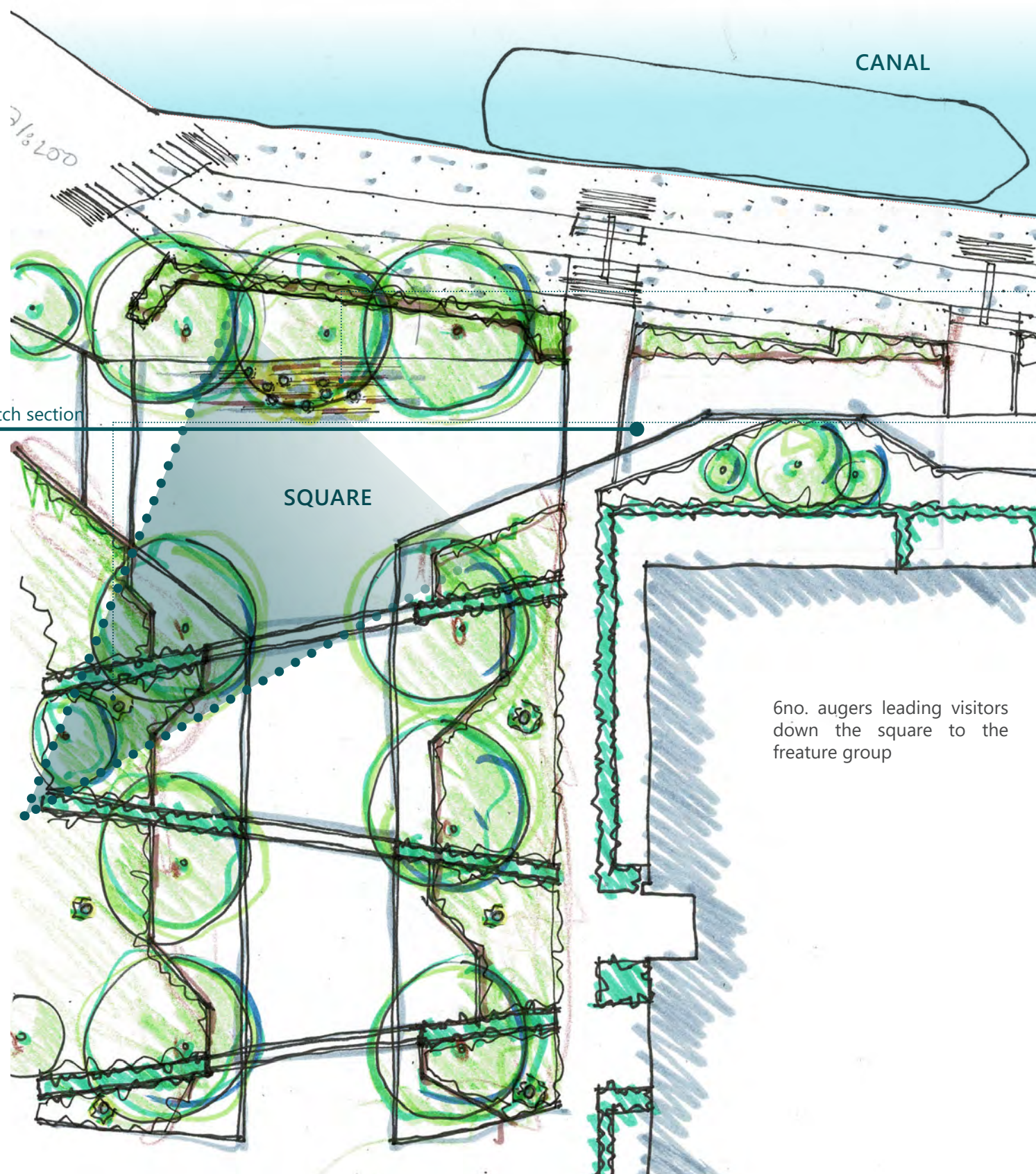
LOCATION PLAN



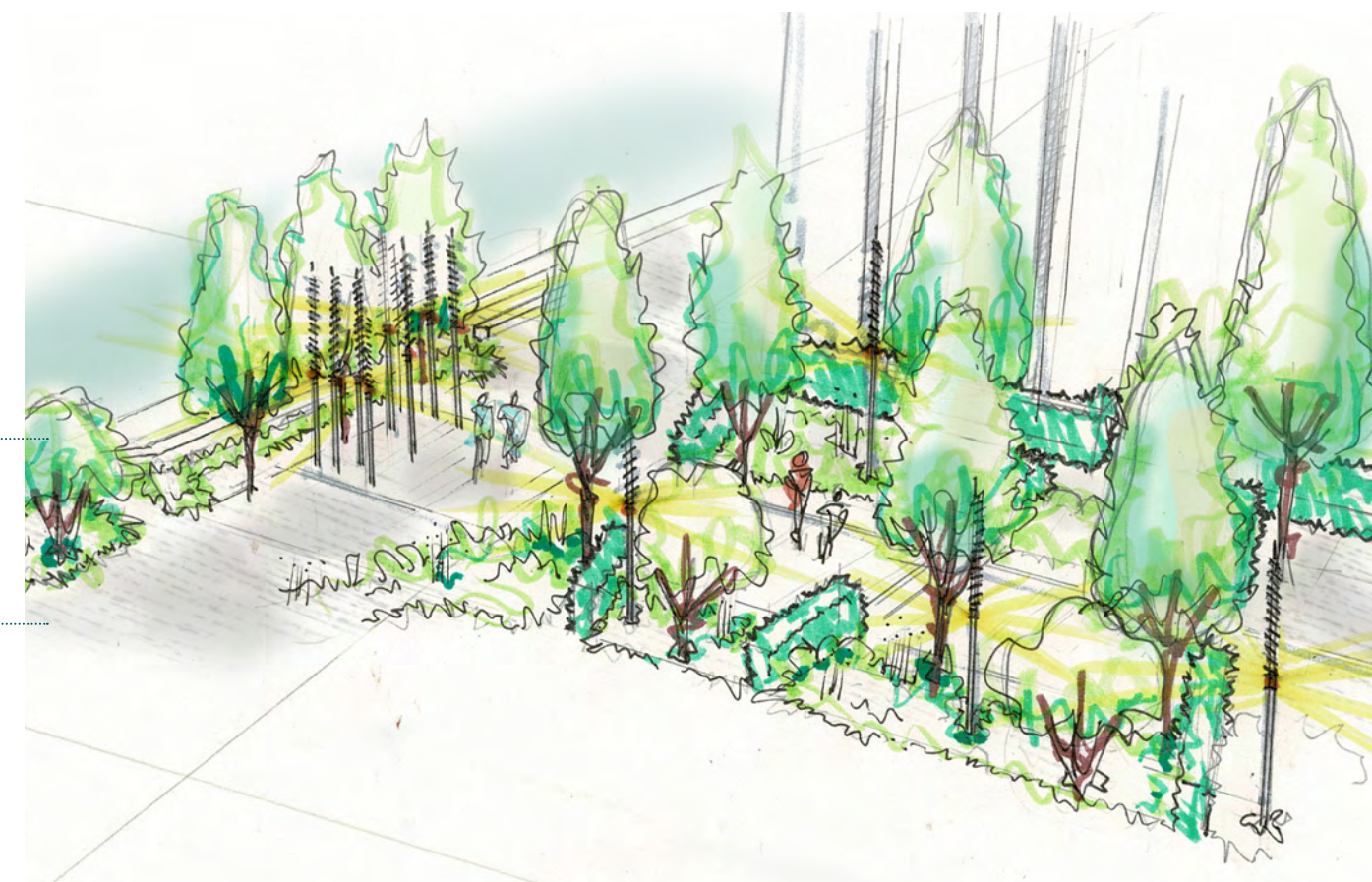
SKETCH SECTION



Grouped augers (in paving)  
form focal point as viewed  
up the street

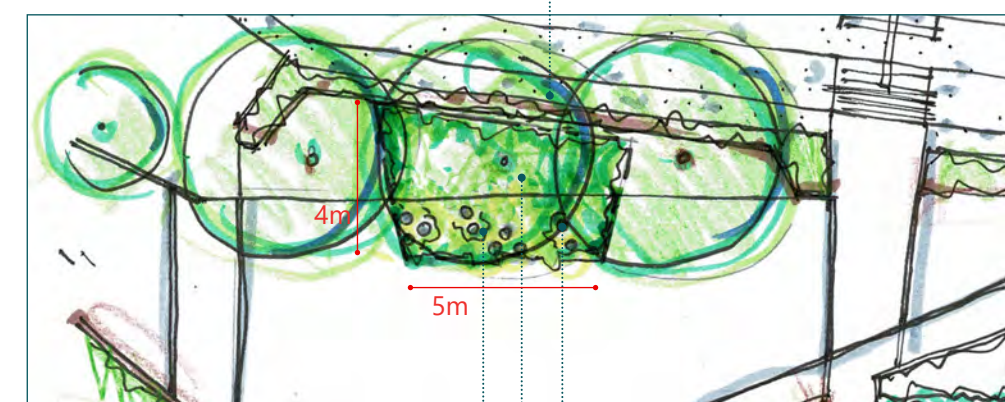


6no. augers leading visitors  
down the square to the  
feature group



### ALTERNATIVE POSITIONING WITHIN PLANTING

3no. trees



Cluster of augers

Defensible planting

Auger set in planting on concrete footing



# SPIRALLING AUGER

## PROPOSAL

The final design proposal for the augers aims to create a bold visual impact at the end of the canal square avenue. All of the augers have been positioned in a single group at the head of the space. To enhance engagement and interaction, the main group of augers will be integrated into the paving in a playful layout, with different levels and angles, inviting users of the square to interact with the sculpture as they move through the area.

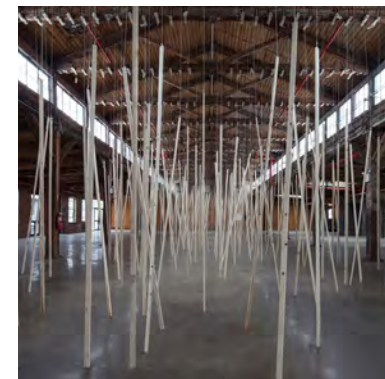
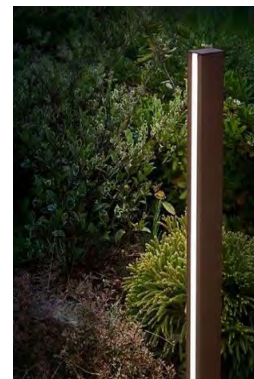
The design incorporates lighting into the ground below the augers to extend the visual interest into the evening hours and highlight the different angles. By illuminating the sculptures, the square transforms into a dynamic space at dusk and after dark, offering residents and visitors an opportunity to experience the artwork in a different light. This thoughtful integration of lighting not only enhances the aesthetic appeal of the augers but also contributes to the overall ambiance and safety of the square.

Despite the bold aesthetic, the layout remains flexible to accommodate community events and pop-up markets, fostering a dynamic and inclusive space that can adapt to various community activities and gatherings.

*Technical requirements; Galvanised & powder coated steel post 2.4m above ground, built in lighting unit in the top of the post in a recess. Auger welded into top of the post. Post to be root fixed below ground with cable inlet and opening panel on side of post to allow access to lighting driver positions or fixed to a concrete foundation. Auger to be painted in matching RAL colour to post.*



IMAGES OF THE SPIRALLING AUGERS AT NIGHT



PRECEDENT IMAGES OF VERTICAL SPIRE ARTWORK IN LANDSCAPE







VIEW FROM CANAL STREET LOOKING NORTH TOWARDS THE CANAL



VIEW FROM CANAL SQUARE LOOKING NORTH



VIEW FROM BLOCK B PLAY AREA



AERIAL VIEW FROM LOWER LEVELS OF BLOCK B INTO THE SQUARE  
ART STRATEGY