

04 Balcony design / daylight sunlight

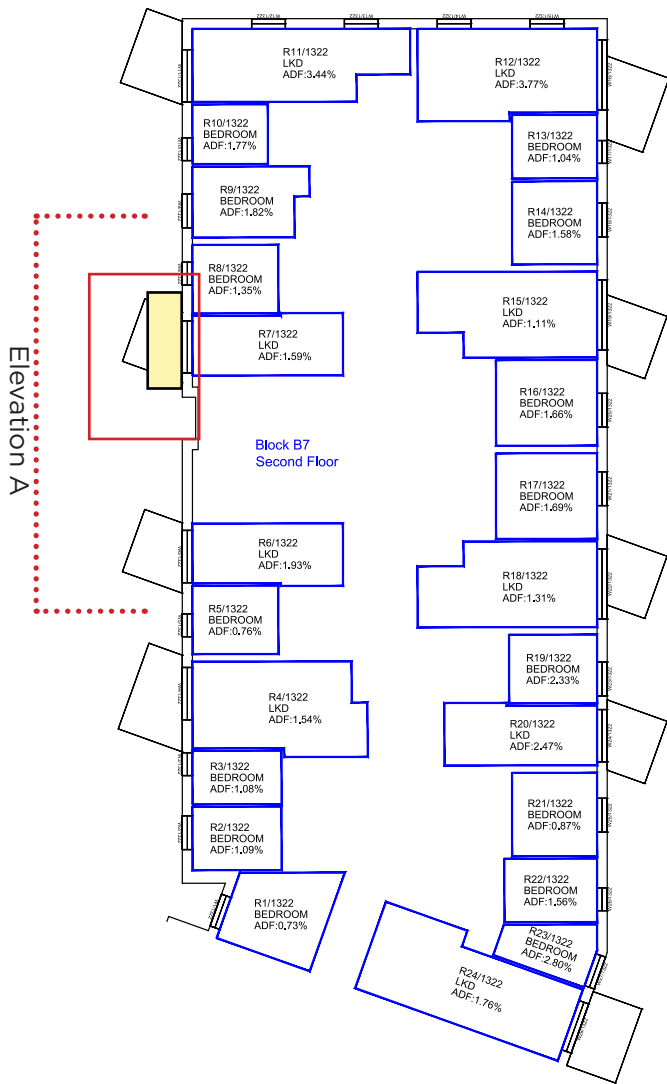
A comprehensive daylight and sunlight assessment was carried out in support of the original planning application.

(1331_APP_2017_1883Nestle FINAL Daylight and Sunlight Report – Project Ref P744 prepared by Point 2 Surveyors Ltd - May 2017)

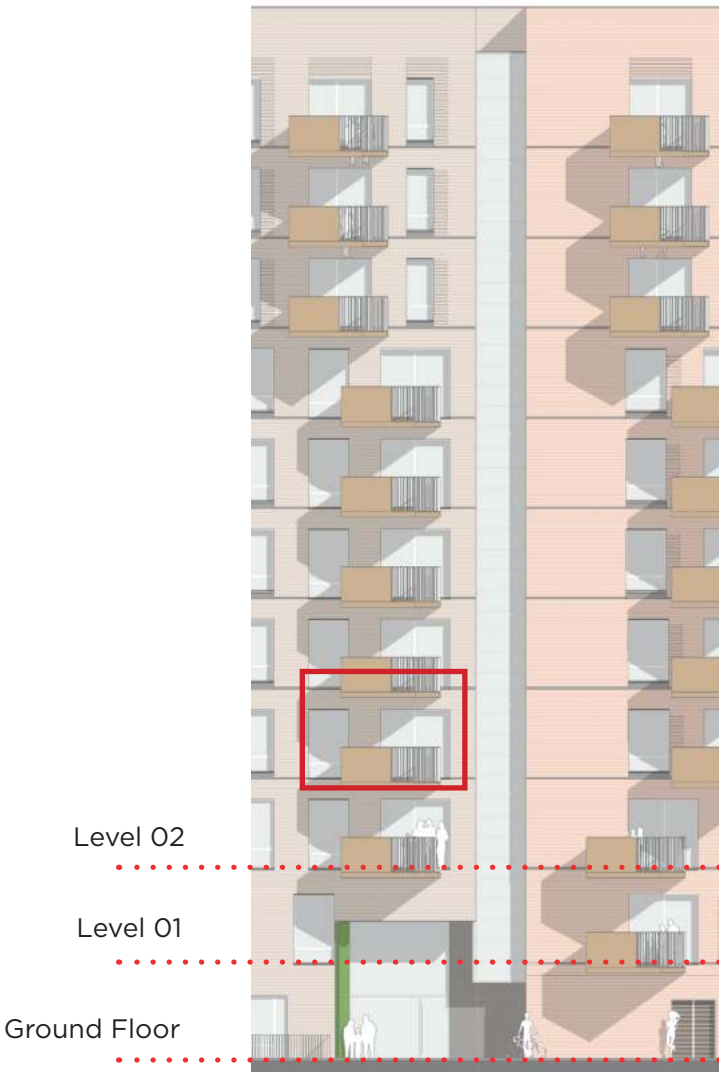
The daylight and sunlight assessment concludes that 1,327 of the 1,802 habitable rooms assessed (74%) will have daylight penetrating to in excess of 80% of the working plane representing excellent daylight distribution within the rooms.

The proposed amendments to the balconies reduce the projection from the building façade and therefore the overshadowing from the balconies.

Extract from the Daylight and Sunlight report below (Block 7, Level 02)



Consented Design - 2nd Floor Plan



Consented Design - Elevation A



Proposed Design - Elevation A