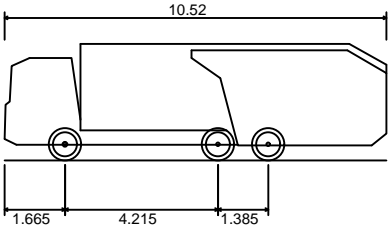
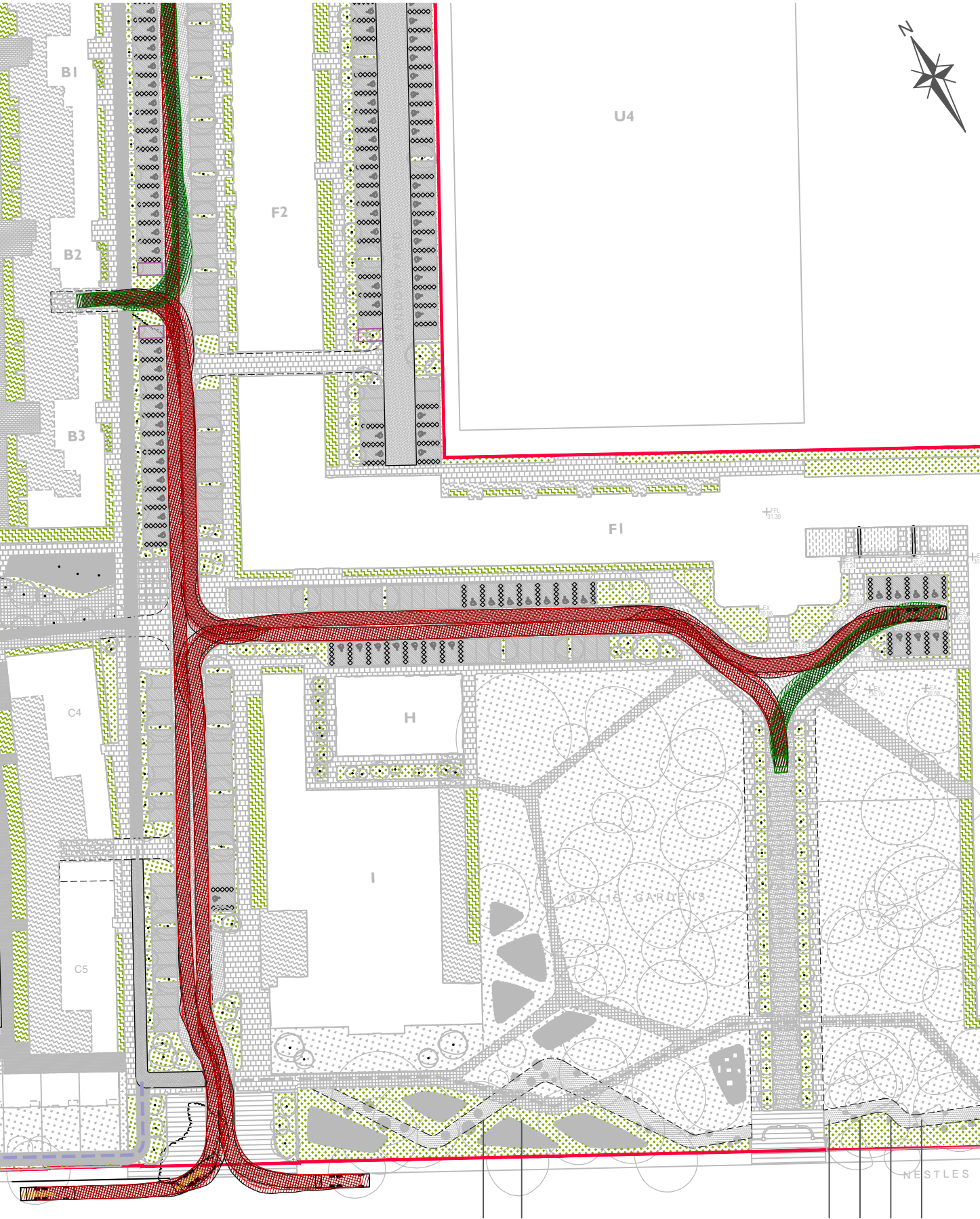


# Vehicle access

Below: Markides drawing 16018-01-009, showing swept path analysis for a refuse vehicle



Phoenix 2-23W (with Elite 2 6x4 chassis)	
Overall Length	10.520m
Overall Width	2.530m
Overall Body Height	3.211m
Min Body Ground Clearance	0.416m
Track Width	2.530m
Lock-to-lock time	4.00s
Curb to Curb Turning Radius	9.950m



# Condition 54: external materials & details

This section provides details of all materials, external finishes and colours to the building, including samples of bricks, ceramic tiles and details of balconies.

Refer to condition 42 for further details of windows and works to the retained and new facades of block F1, as well as refuse vehicle tracking.

The proposals are as previously approved under condition 41, 42, & 54 application reference 1331/APP/2019/2386, except where relevant drawings have been updated to reflect the latest revisions of the approved S96 application (reference 1331/APP/2021/4497).



# Materiality

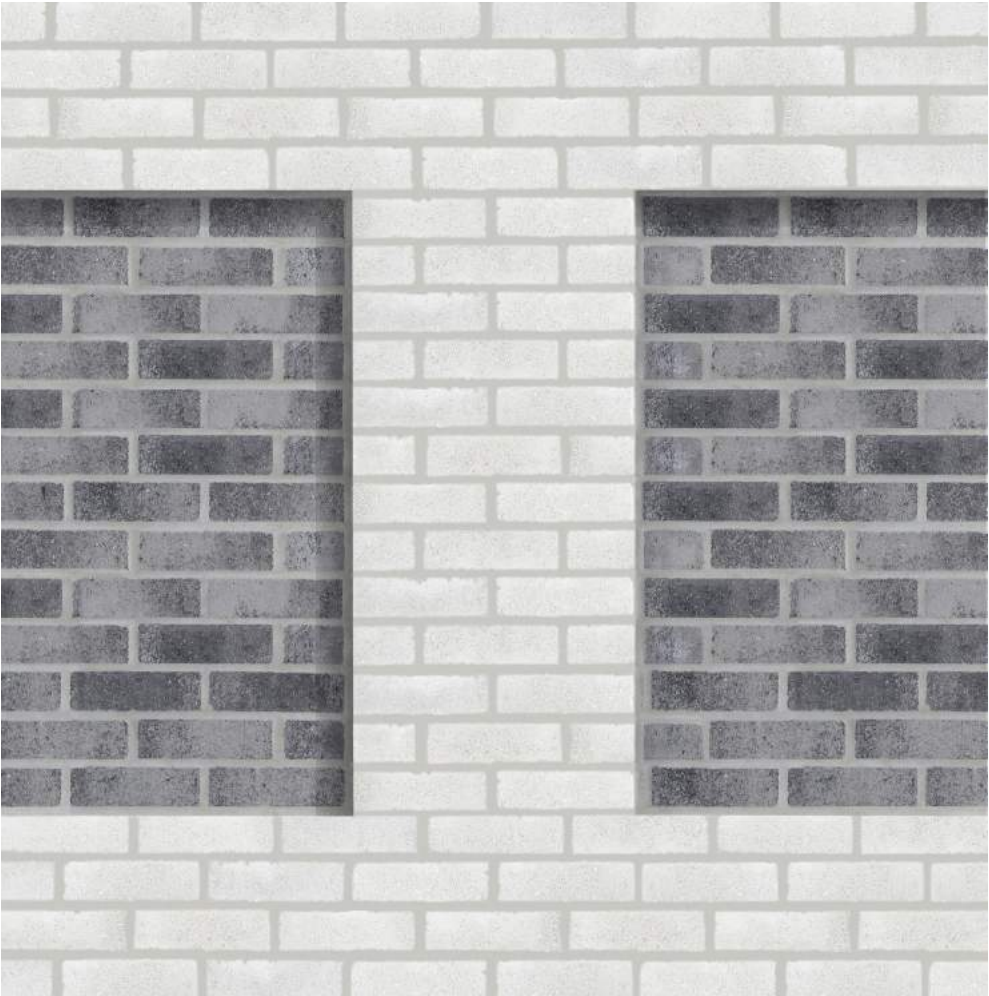
Following discussions between Barratt London and Local Planning Authorities, it has been agreed that brickwork on Block F1 will comprise of both clay and concrete bricks.

No material changes have been made as part of the approved S96 application.

As illustrated on the following pages, the new fourth floor facades facing Wallis Gardens, along Sandow Walk, Canal Street, and visible from Nestles Avenue will consist of clay bricks, while facades facing Sandow Yard and Segro’s warehouse U4 and will consist of concrete bricks, as previously proposed.



Sample on site of garden-facing bricks (Clay)

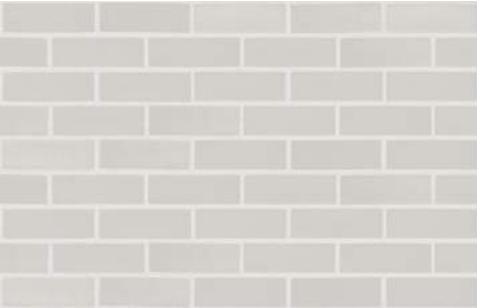


Sample on site of rear industrial-facing bricks (Edenhall)



Sample of tiles (Alsecco), a mockup panel of this tile has been submitted

Brick: Weinerberger Platinum White  
Mortar: Dove White  
Pointing: Bucket Handle



Clay bricks (to front)

Brick: Crest Grey Handmade  
Mortar: Cemex Natural Grey  
Pointing: Bucket Handle



Brick: Edenhall Diamond White  
Mortar: Cemex Natural Grey  
Pointing: Bucket Handle



Concrete bricks (to rear)

Brick: Edenhall Marble Grey  
Mortar: Cemex Natural Grey  
Pointing: Bucket Handle



Tile: Alsecco Glazed Ceramic Tile  
Colour: To match existing factory tiles  
Pointing: 3mm



Tiles (to front)

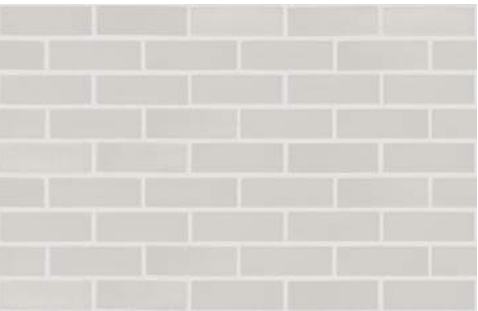
- Clay bricks
- Concrete bricks
- Tiles



South elevation (facing Sandow Walk & Wallis Gardens)  
DM-2-00\_P6

①

Brick: Weinerberger Platinum White  
Mortar: Dove White  
Pointing: Bucket Handle



Clay bricks (to front)

②

Brick: Crest Grey Handmade  
Mortar: Cemex Natural Grey  
Pointing: Bucket Handle



③

Tile: Alsecco Glazed Ceramic Tile  
Colour: To match existing factory tiles  
Pointing: 3mm



Tiles (to front)



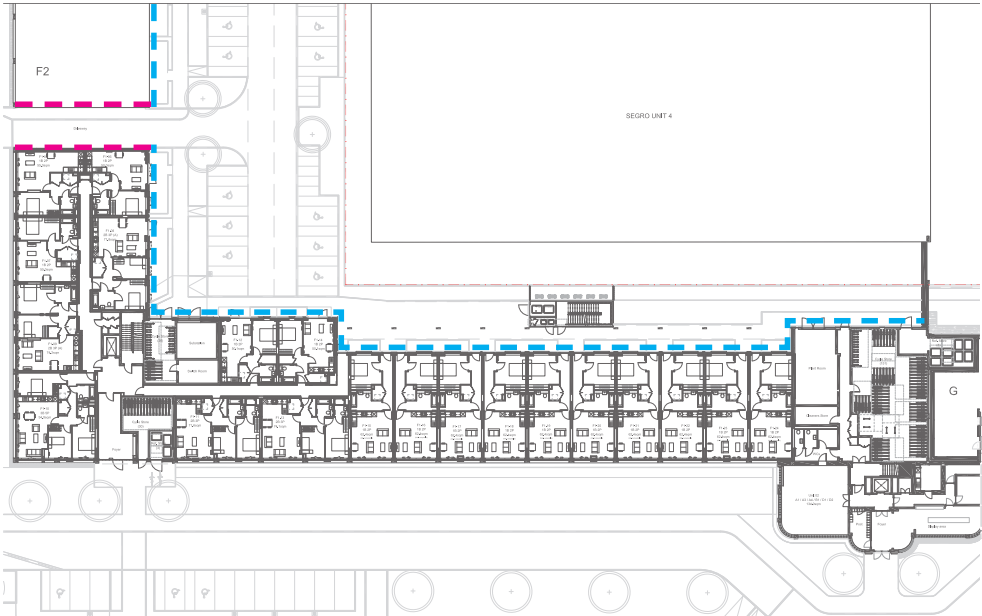
# Materiality

No changes to west elevation in S96 application.

- Clay bricks
- Concrete bricks
- Tiles



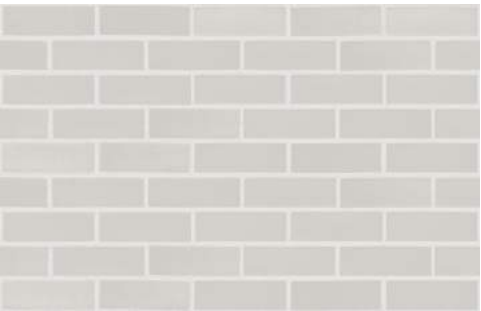
West elevation (facing Canal Street)  
DM-2-00\_P6



Ground floor plan  
DM-4-00\_P9

①

Brick: Weinerberger Platinum White  
Mortar: Dove White  
Pointing: Bucket Handle



Clay bricks (to front)

②

Brick: Crest Grey Handmade  
Mortar: Cemex Natural Grey  
Pointing: Bucket Handle



③

Tile: Alsecco Glazed Ceramic Tile  
Colour: To match existing factory tiles  
Pointing: 3mm

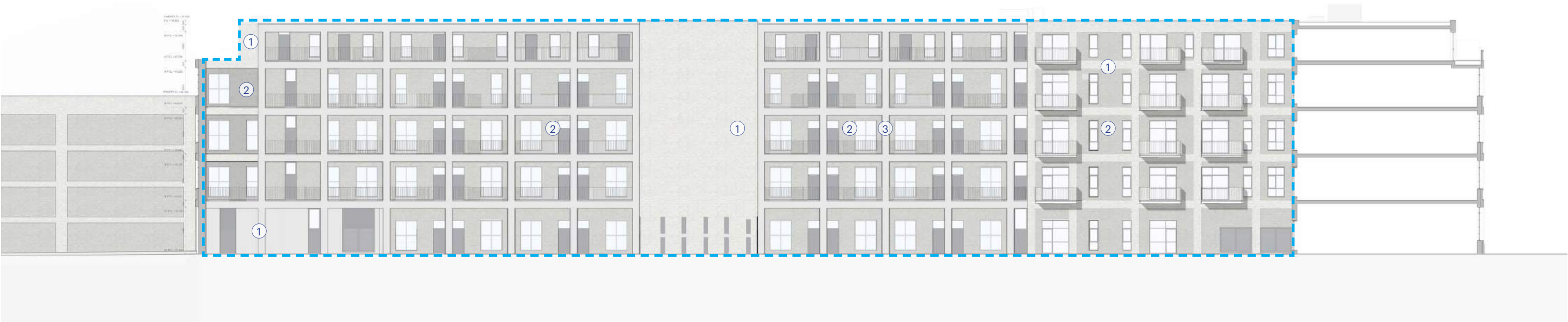


Tiles (to front)

# Materiality

Refer to dMFK\_2052\_F1\_S96 Planning Amendments\_ August 2022 for summary of changes made as part of the approved NMA application.

- Clay bricks
- Concrete bricks



North elevation (facing Sandow yard & Segro warehouse U4)  
DM-2-01\_P6

①

Brick: Edenhall Diamond White  
Mortar: Cemex Natural Grey  
Pointing: Bucket Handle



Concrete bricks (to rear)

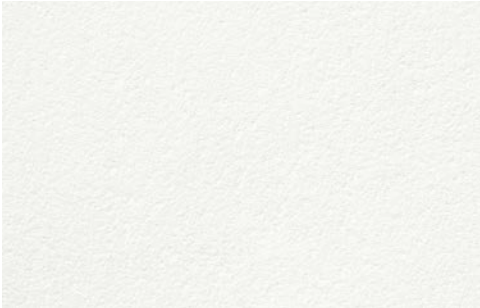
②

Brick: Edenhall Marble Grey  
Mortar: Cemex Natural Grey  
Pointing: Bucket Handle



③

Product: Sikagard 550W Elastic  
Colour: RAL 9016, Traffic White  
(as approved to Segro warehouse U4)

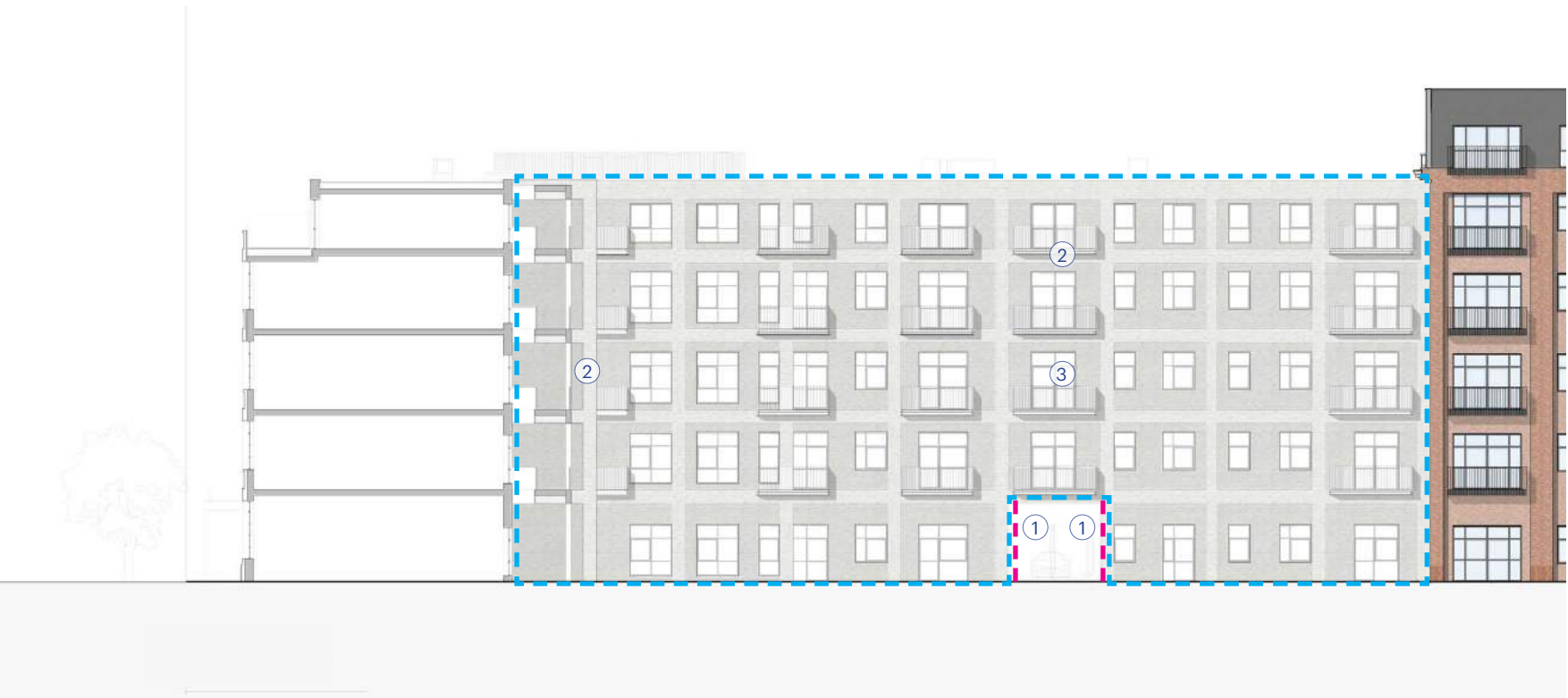


Render finish (to gantry concrete)

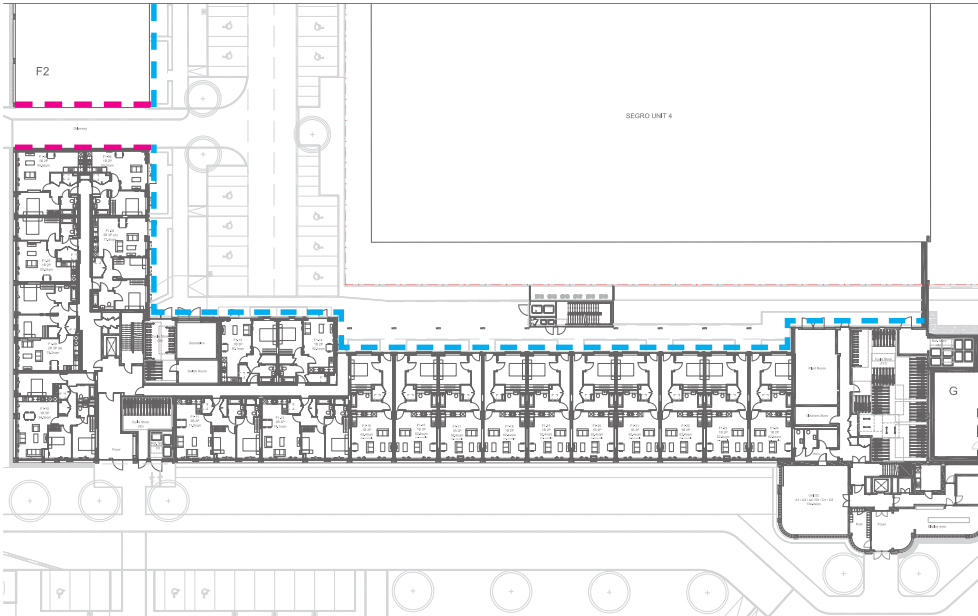
# Materiality

Refer to dMFK\_2052\_F1\_S96 Planning Amendments\_ August 2022 for summary of changes made as part of the approved S96 application.

- Clay bricks
- Concrete bricks



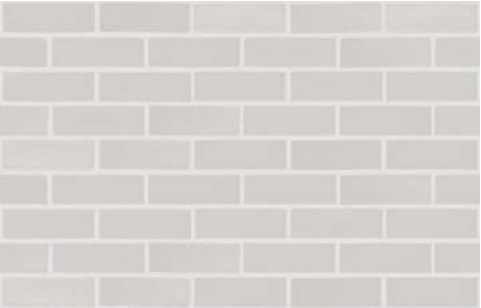
East elevation (facing Sandow yard & Segro warehouse U4)  
DM-2-01\_P6



Ground floor plan  
DM-4-00\_P9

①

Brick: Weinerberger Platinum White  
Mortar: Dove White  
Pointing: Bucket Handle



Clay bricks (to front)

②

Brick: Edenhall Diamond White  
Mortar: Cemex Natural Grey  
Pointing: Bucket Handle



Concrete bricks (to rear)

③

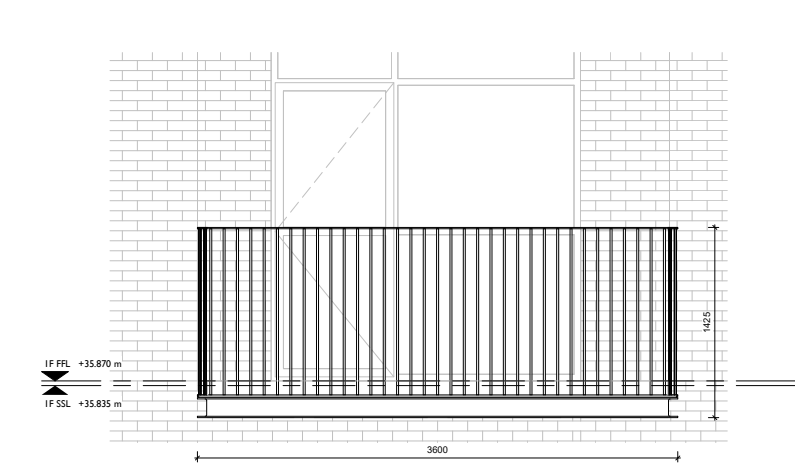
Brick: Edenhall Marble Grey  
Mortar: Cemex Natural Grey  
Pointing: Bucket Handle



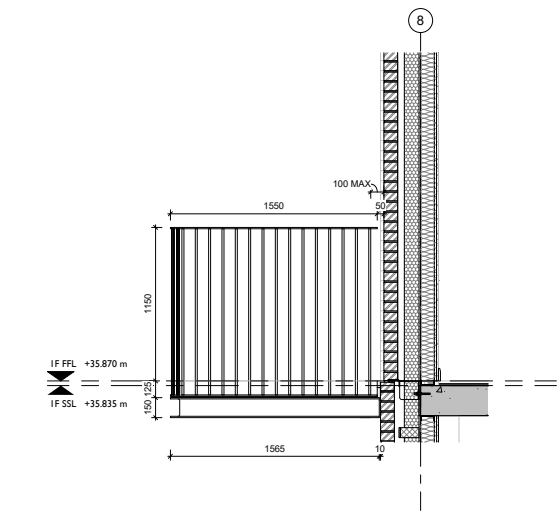


# Balconies

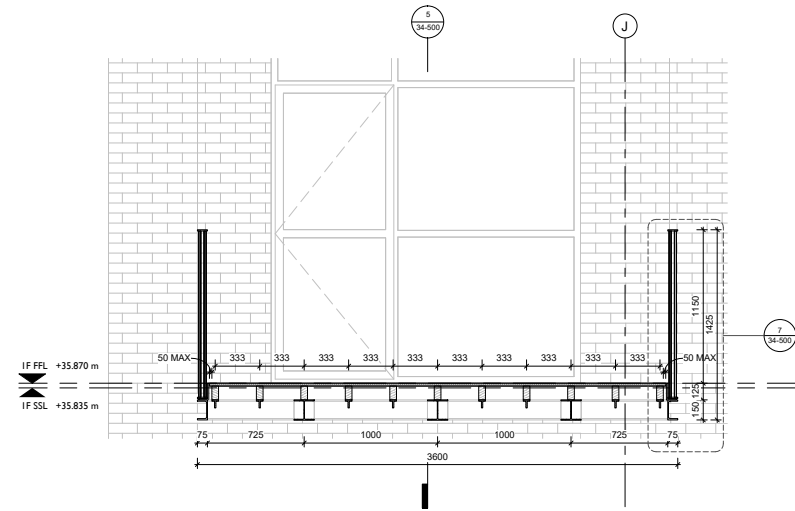
No changes to west elevation in S96 application.



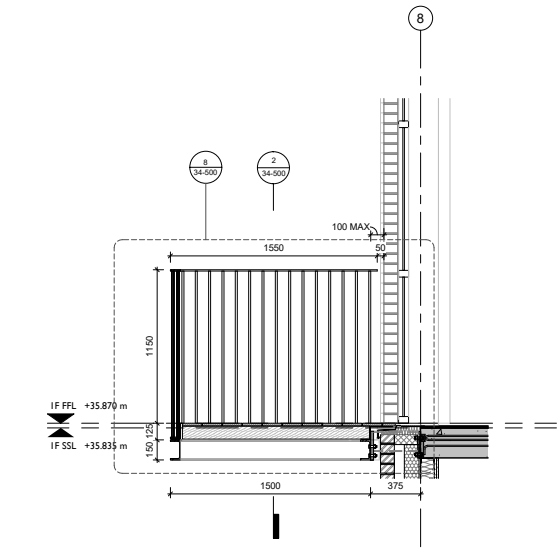
1 AMT-01 FRONT ELEVATION  
1 : 20



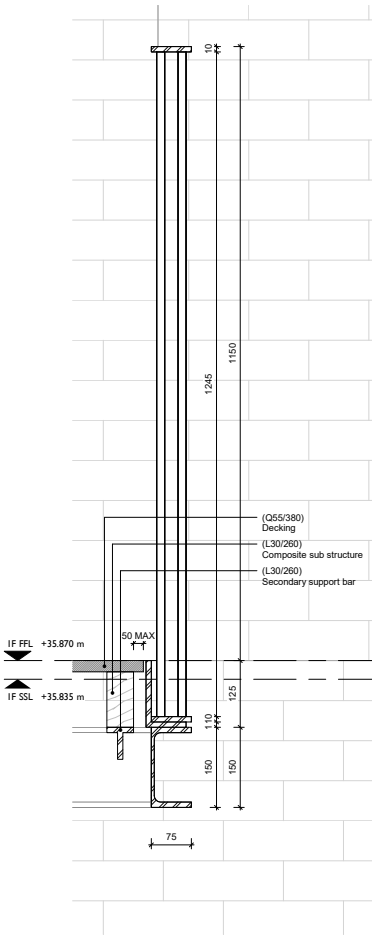
4 AMT-01 SIDE ELEVATION  
1 : 20



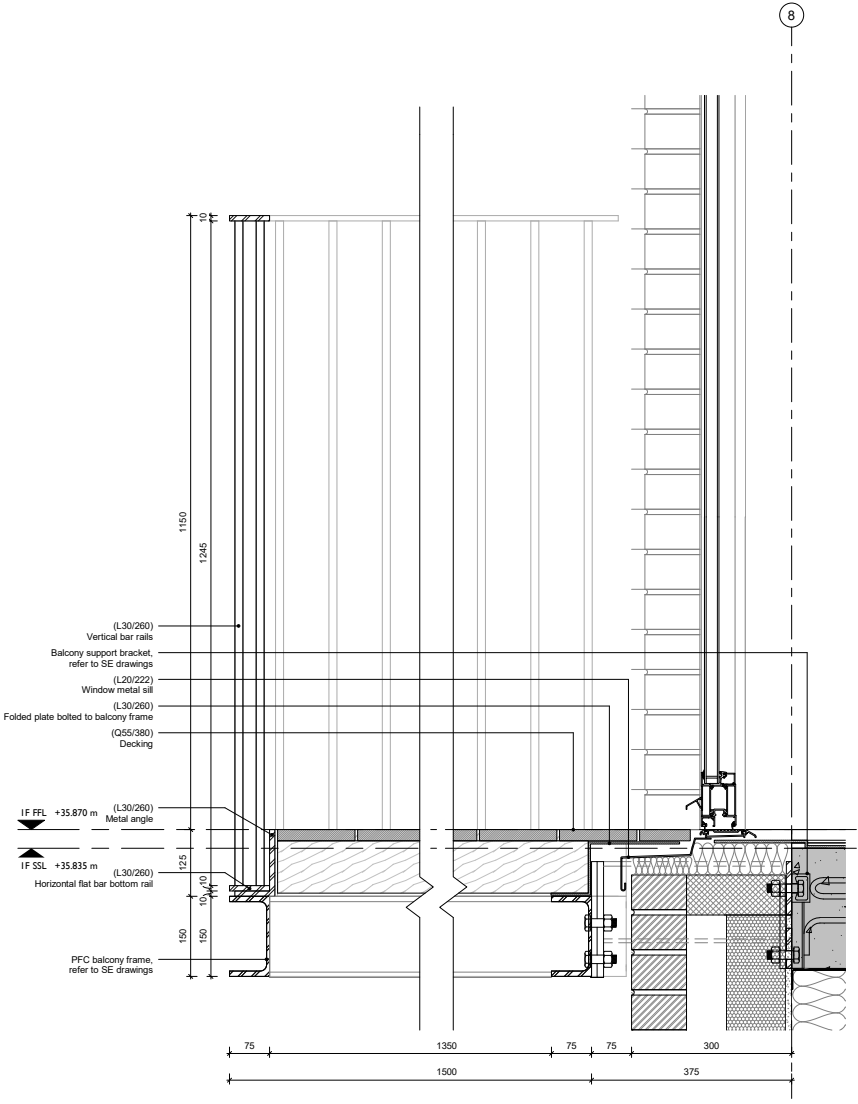
2 AMT-01 LONG SECTION  
1 : 20



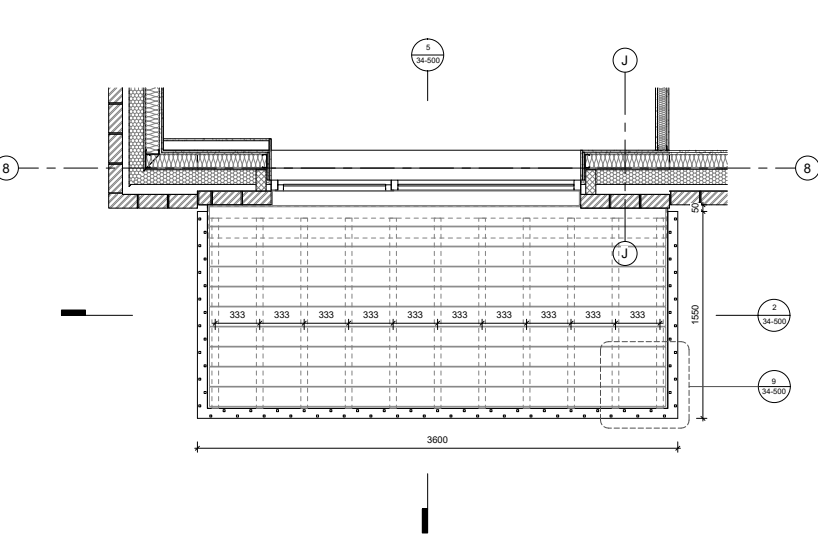
5 AMT-01 CROSS SECTION  
1 : 20



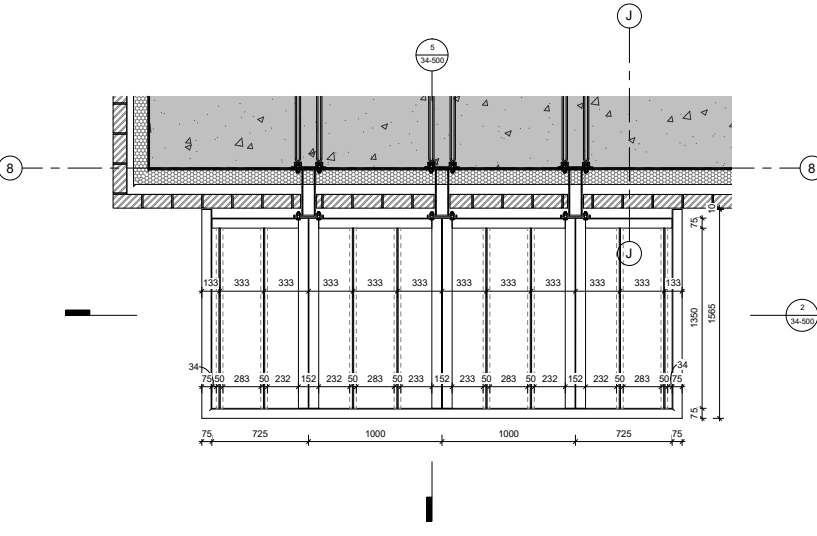
7 AMT-01 DETAIL 1  
1 : 5



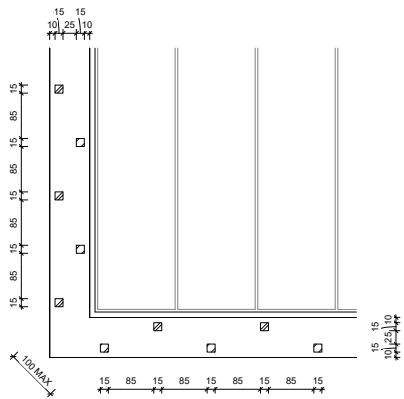
8 AMT-01 DETAIL 2  
1 : 5



3 AMT-01 PLAN  
1 : 20



6 AMT-01 STRUCTURAL PLAN  
1 : 20



9 AMT-01 DETAIL 3  
1 : 5



de Metz Forbes Knight

76 Charlotte Street  
London  
W1T 4QS

+44 (0)20 7435 1144  
info@dMFK.co.uk  
dMFK.co.uk