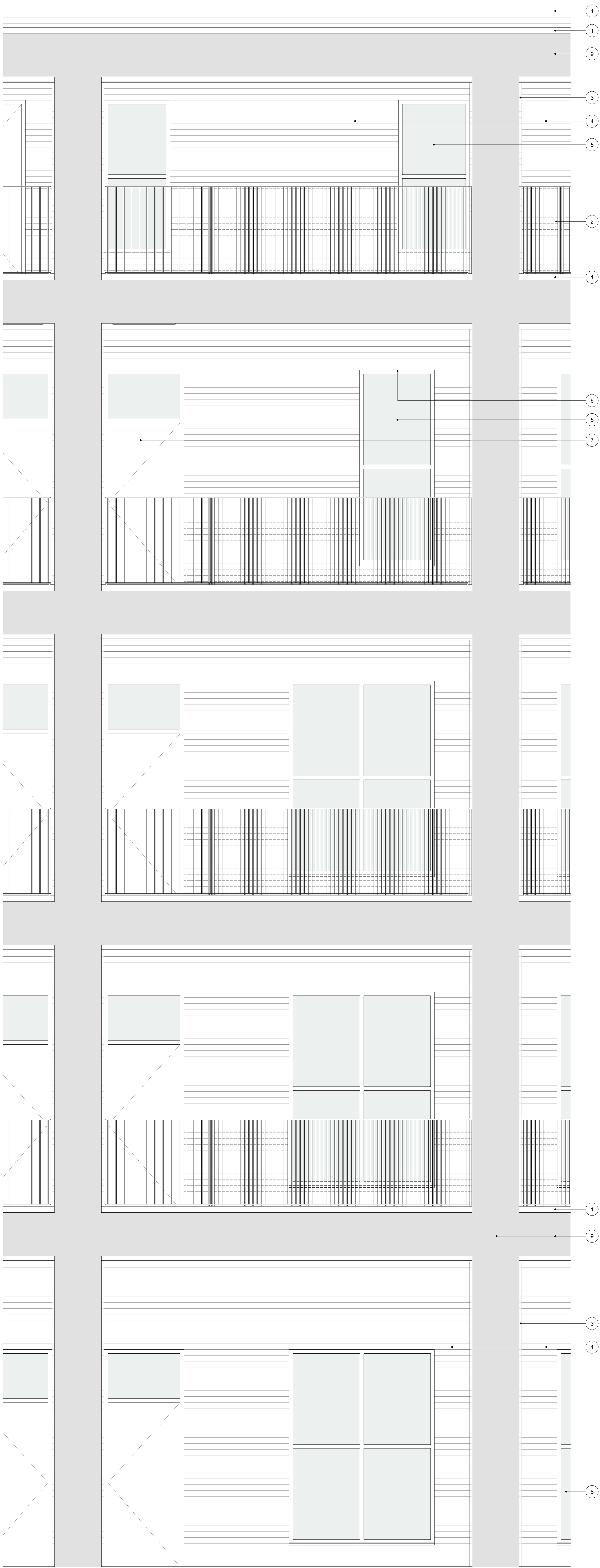


1 BS 8 - SECTION
1 : 20

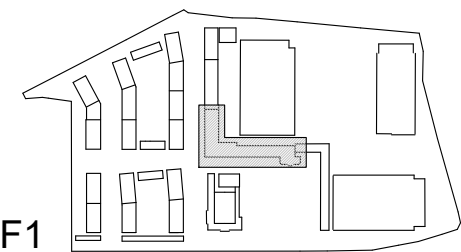


2 BS 8 - NORTH ELEVATION
1 : 20

- Aluminium coping (H72/480)
- Access deck (L30/265)
- Facing brick BK01 (F10/220)
- Facing brick BK02 (F10/220)
- Aluminium window (L10/340)
- Aluminium pressing to soffit (L20/222)
- External door (L20/222)
- PPC metal sill (L10/340)
- Render finish (C42/305)

date	rev	revisions
30.08.23	G	S96 Addendum

keyplan



notes

dMFK Architects Ltd take no responsibility for dimensions obtained by scaling from this drawing. If no dimension is shown the recipient must ascertain the dimension specifically from the architect or by site measurement and may not rely on the drawing. Supply of the drawing in digital form is solely for convenience and no reliance may be placed on any data in digital form. All data must be checked against hard copy. This drawing is issued for design intent only and should not be used for construction unless stated.

copyright
This drawing is the property of dMFK Architects Ltd. No disclosure or copy of it may be made without the written permission of dMFK Architects Ltd.

scale at A0	scale at A2	project	drawing title
1 : 20	1 : 20	Former Nestlé Factory	Bay Study 08 - North elevation (windows)
drawn by	checked by	project no.	client
LK	JW	2126	Barratt London
			2126-A-F1-dMFK-DR- 21-507
			revision
			G

dMFK

DE METZ FORBES KNIGHT ARCHITECTS

the old library 119 cholmley gardens london nw6 1aa t 020 7435 1144 f 020 7435 0884 mail info@dmfk.co.uk