

Project Details		
Project Name		
Nestle Block 3		
Project Address		
Barratt London Hayes Village Site Nestle Avenue Hayes. UB3 4QE		
Drawing Number	Date	
DA014	19/01/2023	
Revision	Drawn by	Ckd. by
C	D AUGER	DA

When installing, Gravel, Stones, etc must be cleared, Support Feet laid down and then covered over

CONFIDENTIAL

PROPOSAL ONLY

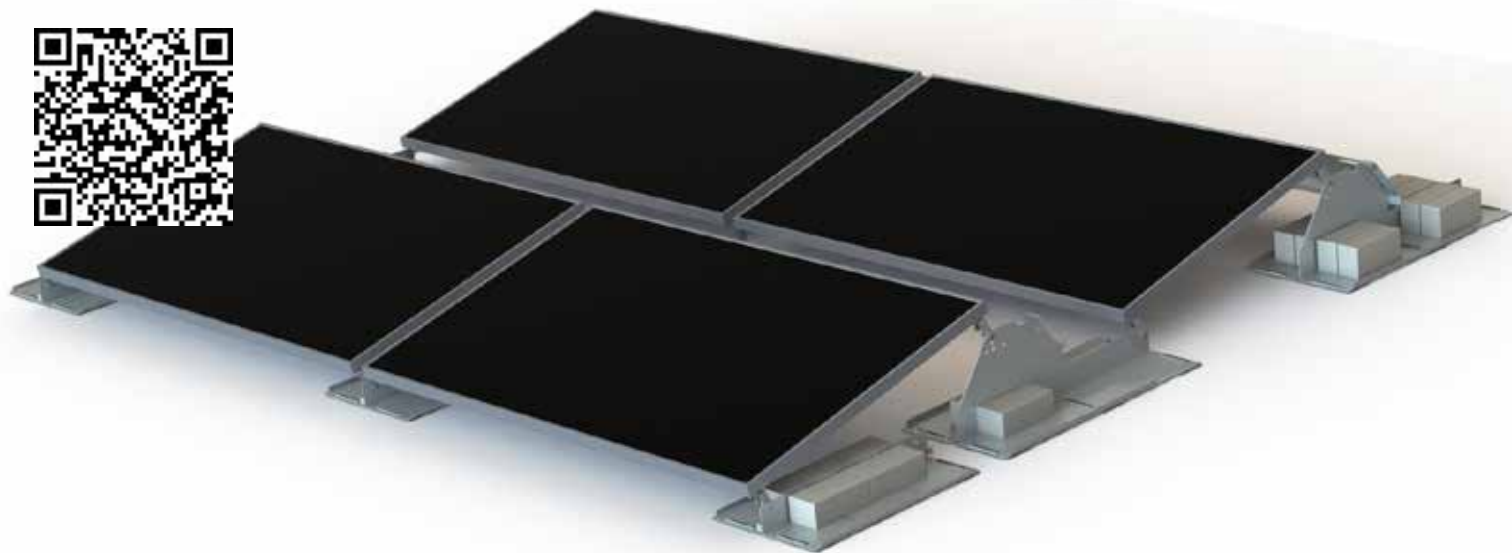
PB III HD Layout



SUNFIXINGS
CONNECTING TO THE FUTURE

www.sunfixings.co.uk
R3 Bourton Industrial Park, Bourton on the Water,
Cheltenham, Gloucestershire, GL54 2HQ, UK
+44 (0) 1451 824 312 info@sunfixings.co.uk

Roof mounted systems are subject to structural survey. Information is correct according to submitted checklist and is subject to change. Please refer to the system Mounting Instructions, failure to do so will void warranties. This drawing, with respect to this project is prepared on the assumption that Sunfixings' products will be used and that they are not intended for any other use. Consequently, Sunfixings cannot accept any responsibility for the use of and/or reliance upon this drawing by third parties. All third parties should calculate their own specifications and drawings in order to ensure these are correct for their own products. Do not scale from this drawing. All dimensions are indicative only and are in mm unless otherwise stated. Do not use any dimensions without checking on site. The drawing is copyright of Sunfixings and these drawings must not be used or replicated without Sunfixings' written consent.
© Copyright 2022 SUNFIXINGS Limited



LIGHT **TEGRA**

We can supply the system with the ballast.

We protect the existing roof by applying a separation layer to the bottom of the support prior to delivery.

The support design allows rainwater to flow freely around.

The wide supports help to avoid heavy point loading.

9.70kg/m²

Weight (exc. ballast)

1°-5°

Suitable roof pitch

10°-12°

Module angle available

Landscape

Module orientation

Membrane, PVC, bitumen & concrete
Suitable roof coverings

Stainless & galvanised steel
Material

+44 (0) 1451 824 312
info@sunfixings.co.uk

R3 Bourton Industrial Park, Bourton on the Water, Cheltenham, Glos, GL54 2HQ, UK

WWW.SUNFIXINGS.CO.UK

V082018



SUNFIXINGS

CONNECTING TO THE FUTURE

Date: 25/01/2023

Checked By: AG

dmfK

☒ Status A: No comments

☐ Status B: Incorporate comments and resubmit

☐ Status C: Reject for reasons noted, revise and resubmit

Status A has to be understood as 'No comments provided' to this document. dmfK doesn't have expertise in these regards hence we decline any responsibility about the choice of the product. Please seek comments/approval from OCSC and Gravity.

Mono

390W MBB Half-Cell Module

JAM60S20 365-390/MR Series

Introduction

Assembled with multi-busbar PERC cells, the half-cell configuration of the modules offers the advantages of higher power output, better temperature-dependent performance, reduced shading effect on the energy generation, lower risk of hot spot, as well as enhanced tolerance for mechanical loading.



Higher output power



Lower LCOE



Less shading and lower resistive loss

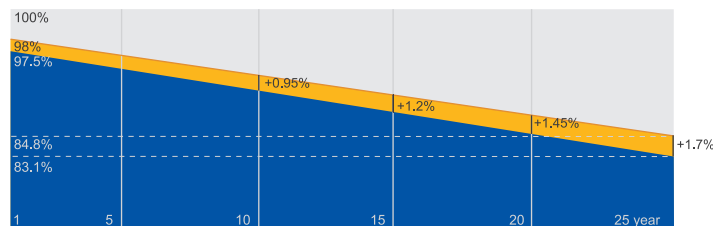


Better mechanical loading tolerance

Superior Warranty

- 12-year product warranty
- 25-year linear power output warranty

0.55% Annual Degradation
Over 25 years



■ New linear power warranty ■ Standard module linear power warranty

Comprehensive Certificates

- IEC 61215, IEC 61730, UL 61215, UL 61730
- ISO 9001: 2015 Quality management systems
- ISO 14001: 2015 Environmental management systems
- ISO 45001: 2018 Occupational health and safety management systems
- IEC TS 62941: 2016 Terrestrial photovoltaic (PV) modules – Guidelines for increased confidence in PV module design qualification and type approval



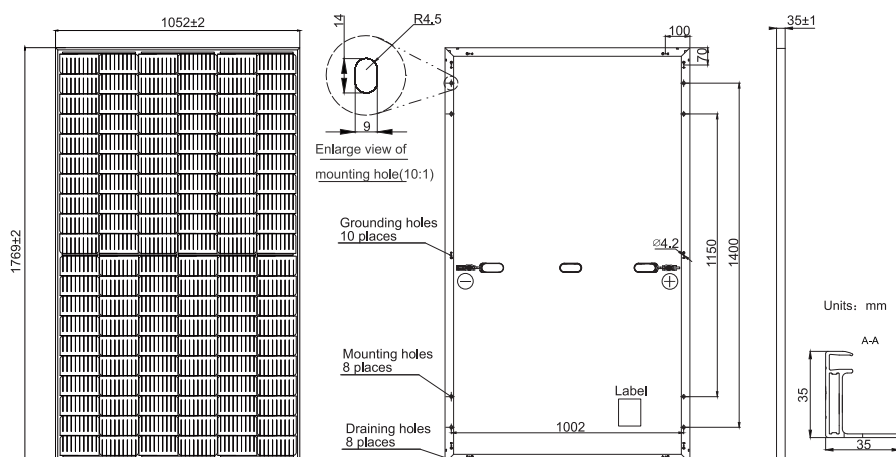
JA SOLAR

www.jasolar.com

Specifications subject to technical changes and tests.
JA Solar reserves the right of final interpretation.



MECHANICAL DIAGRAMS



Remark: customized frame color and cable length available upon request

SPECIFICATIONS

Cell	Mono
Weight	20.5kg±3%
Dimensions	1769±2mm×1052±2mm×35±1mm
Cable Cross Section Size	4mm ² (IEC) ,12 AWG(UL)
No. of cells	120(6×20)
Junction Box	IP68, 3 diodes
Connector	MC4(1000V) MC4-EVO2(1500V)
Cable Length (Including Connector)	1200mm(+)/1200mm(-)
Packaging Configuration	31pcs/Pallet 806pcs/40ft Container

ELECTRICAL PARAMETERS AT STC

TYPE	JAM60S20 -365/MR	JAM60S20 -370/MR	JAM60S20 -375/MR	JAM60S20 -380/MR	JAM60S20 -385/MR	JAM60S20 -390/MR
Rated Maximum Power(P _{max}) [W]	365	370	375	380	385	390
Open Circuit Voltage(V _{oc}) [V]	41.13	41.30	41.45	41.62	41.78	41.94
Maximum Power Voltage(V _{mp}) [V]	33.96	34.23	34.50	34.77	35.04	35.33
Short Circuit Current(I _{sc}) [A]	11.30	11.35	11.41	11.47	11.53	11.58
Maximum Power Current(I _{mp}) [A]	10.75	10.81	10.87	10.93	10.99	11.04
Module Efficiency [%]	19.6	19.9	20.2	20.4	20.7	21.0
Power Tolerance	0~+5W					
Temperature Coefficient of I _{sc} (α _{Isc})	+0.044%/°C					
Temperature Coefficient of V _{oc} (β _{Voc})	-0.272%/°C					
Temperature Coefficient of P _{max} (γ _{Pmp})	-0.350%/°C					
STC	Irradiance 1000W/m ² , cell temperature 25°C, AM1.5G					

Remark: Electrical data in this catalog do not refer to a single module and they are not part of the offer. They only serve for comparison among different module types.

ELECTRICAL PARAMETERS AT NOCT

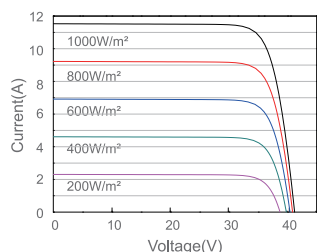
TYPE	JAM60S20 -365/MR	JAM60S20 -370/MR	JAM60S20 -375/MR	JAM60S20 -380/MR	JAM60S20 -385/MR	JAM60S20 -390/MR
Rated Max Power(P _{max}) [W]	276	280	284	287	291	295
Open Circuit Voltage(V _{oc}) [V]	38.41	38.65	38.89	39.14	39.38	39.63
Max Power Voltage(V _{mp}) [V]	32.05	32.30	32.55	32.72	32.96	33.20
Short Circuit Current(I _{sc}) [A]	9.15	9.20	9.25	9.30	9.35	9.40
Max Power Current(I _{mp}) [A]	8.61	8.66	8.71	8.78	8.83	8.88
NOCT	Irradiance 800W/m ² , ambient temperature 20°C, wind speed 1m/s, AM1.5G					

OPERATING CONDITIONS

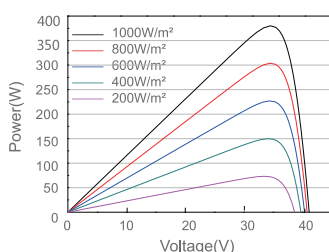
Maximum System Voltage	1000V/1500V DC
Operating Temperature	-40°C~+85°C
Maximum Series Fuse Rating	20A
Maximum Static Load, Front	5400Pa (112 lb/ft ²)
Maximum Static Load, Back	2400Pa (50 lb/ft ²)
NOCT	45±2°C
Safety Class	Class II
Fire Performance	UL Type 1

CHARACTERISTICS

Current-Voltage Curve JAM60S20-380/MR



Power-Voltage Curve JAM60S20-380/MR



Current-Voltage Curve JAM60S20-380/MR

