

TOTAL PROPOSED DISCHARGE TO CANAL = 85.8 l/s
 TOTAL PROPOSED DISCHARGE TO THAMES WATER SEWERS = 270.7 l/s
 ANY PLANT AREA ON THE ROOFS ARE TO BE EXCLUDED FROM THE GREEN ROOF AREAS
 DISCHARGE RATES ARE SUBJECT TO APPROVAL

- NOTES:
1. THIS DRAWING IS TO BE READ IN CONJUNCTION WITH C151867/C/001, C151867/C/002 AND C151867/C/101.
 2. THE LOCATION OF EXISTING MANHOLES, PIPE SIZES, PIPE TYPE AND INVERT LEVELS TO BE CONFIRMED BY CONTRACTOR.
 3. THE PROPOSED ATTENUATION AREAS WITHIN THE THAMES WATER CATCHMENT HAVE BEEN DETERMINED BASED ON LIMITING DISCHARGE FLOWS TO THE 100yr GREENFIELD RUNOFF RATE X3.
 4. THE PROPOSED ATTENUATION AREAS WITHIN THE CANAL CATCHMENT HAVE BEEN DETERMINED BASED ON LIMITING DISCHARGE FLOWS TO QMED (URBAN) CALCULATED USING FEH METHOD.
 5. ATTENUATION VOLUMES SUBJECT TO CHANGE PENDING APPROVAL OF PROPOSED DISCHARGE RATES.
 6. CONDITION OF EXISTING DRAINAGE CONNECTIONS FROM SITE TO BE CONFIRMED AND RETAINED IF FEASIBLE.

P7	21.04.17	UPDATED SITE LAYOUT	AB	JH
P6	27.01.17	GC2 ATTENUATION CRATES AMENDED	AB	JH
P5	25.01.17	PRELIMINARY - GREEN ROOF ADDED, TABLE REMOVED	AB	JH
P4	22.12.16	PRELIMINARY - TABLE DATA, CATCHMENTS AND ATTENUATION AREAS AMENDED	AB	JH
P3	19.12.16	PRELIMINARY - TABLE DATA, CATCHMENTS AND ATTENUATION AREAS AMENDED	AB	JH
P2	31.10.16	PRELIMINARY - TABLE DATA AMENDED	AB	JH
P1	25.10.16	PRELIMINARY	AB	JH
Rev	Date	Description	By	Ckd

MAKOWER
ARCHITECTSBARRATT
— LONDON —

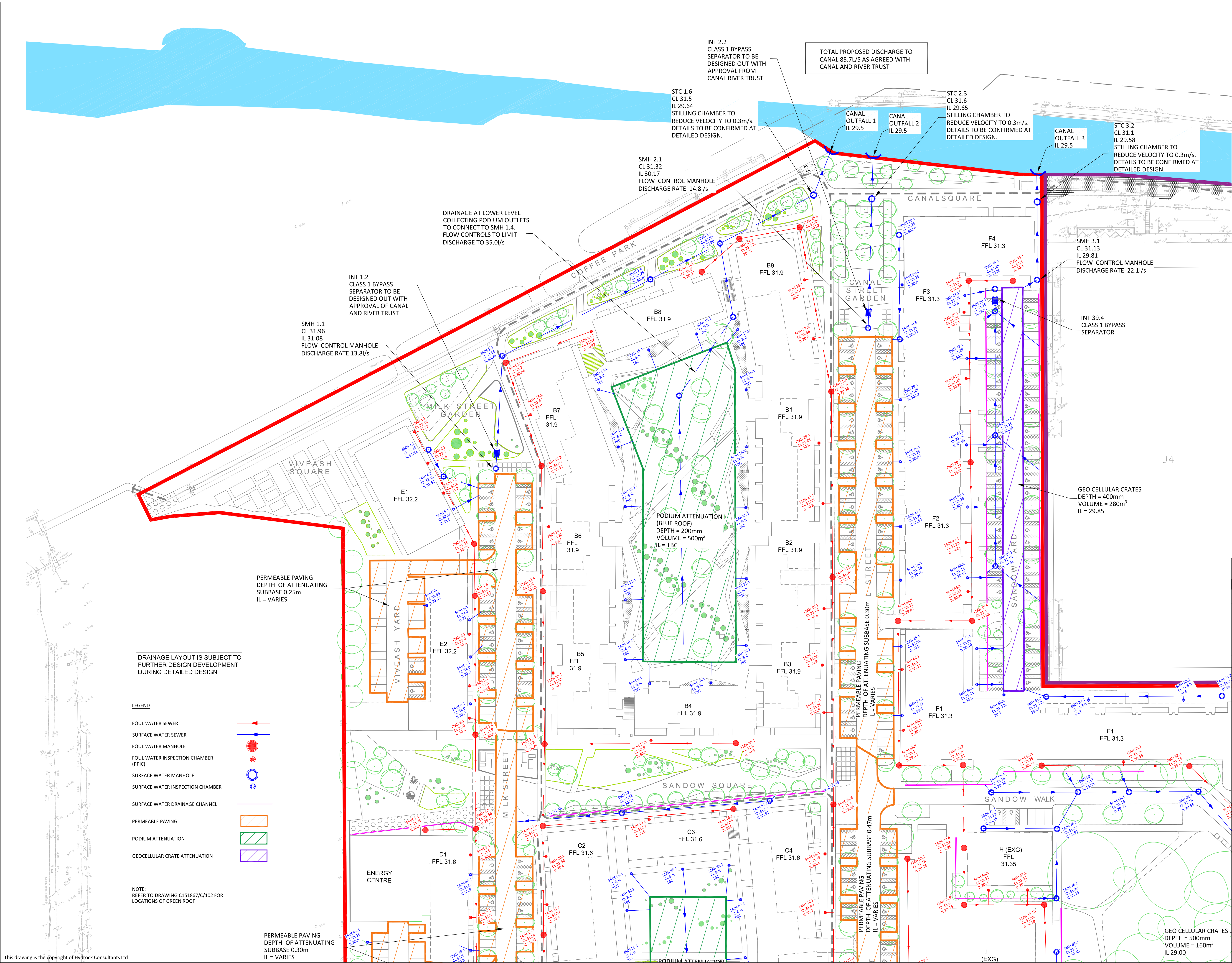
FORMER NESTLÉ SITE
HAYES

PROPOSED SURFACE WATER ATTENUATION LOCATIONS

PRELIMINARY ISSUE

C151867

Drawn AB	Checked JH	Scale @ A1 1:1000	Date 27.01.17	Issue Date 27.01.17
Drawing Number: C151867/C/102				Revision: P7



- NOTES:
- THIS DRAWING IS TO BE READ IN CONJUNCTION WITH C151867/C/002, C151867/C/101 AND C151867/C/102.
 - THE LOCATION OF EXISTING MANHOLES, PIPE SIZES, PIPE TYPE AND INVERT LEVELS TO BE CONFIRMED BY CONTRACTOR.
 - CONDITION OF EXISTING DRAINAGE CONNECTIONS FROM SITE TO BE CONFIRMED AND RETAINED IF FEASIBLE.

P3	21.04.17	UPDATED SITE PLAN	AB	JH
P2	27.01.17	SANDOW STREET & BUILDING H DRAINAGE	AB	JH
P1	25.01.17	PRELIMINARY ISSUE	AB	JH
Rev	Date	Description	By	Ckd

Architect:

MAKOWER ARCHITECTS

Hydrock Consultants Ltd
20/21 The Valley Innovation Centre
Central Boulevard
Southall
UB8 3AA
T +44 (0)121 5060040
info@hydrock.com
www.hydrock.com

Client:

BARRATT — LONDON —

Project Title:

**FORMER NESTLÉ SITE
HAYES**

Drawing Title:

**PROPOSED DRAINAGE
STRATEGY
SHEET 1**

Drawing Status:

PRELIMINARY ISSUE

Hydrock Job No:		C151867		
Drawn	Checked	Scale @ A1	Date	Issue Date
AB	JH	1:500	27.01.17	27.01.17
Drawing Number:				Revision:
C151867/C/001				P3