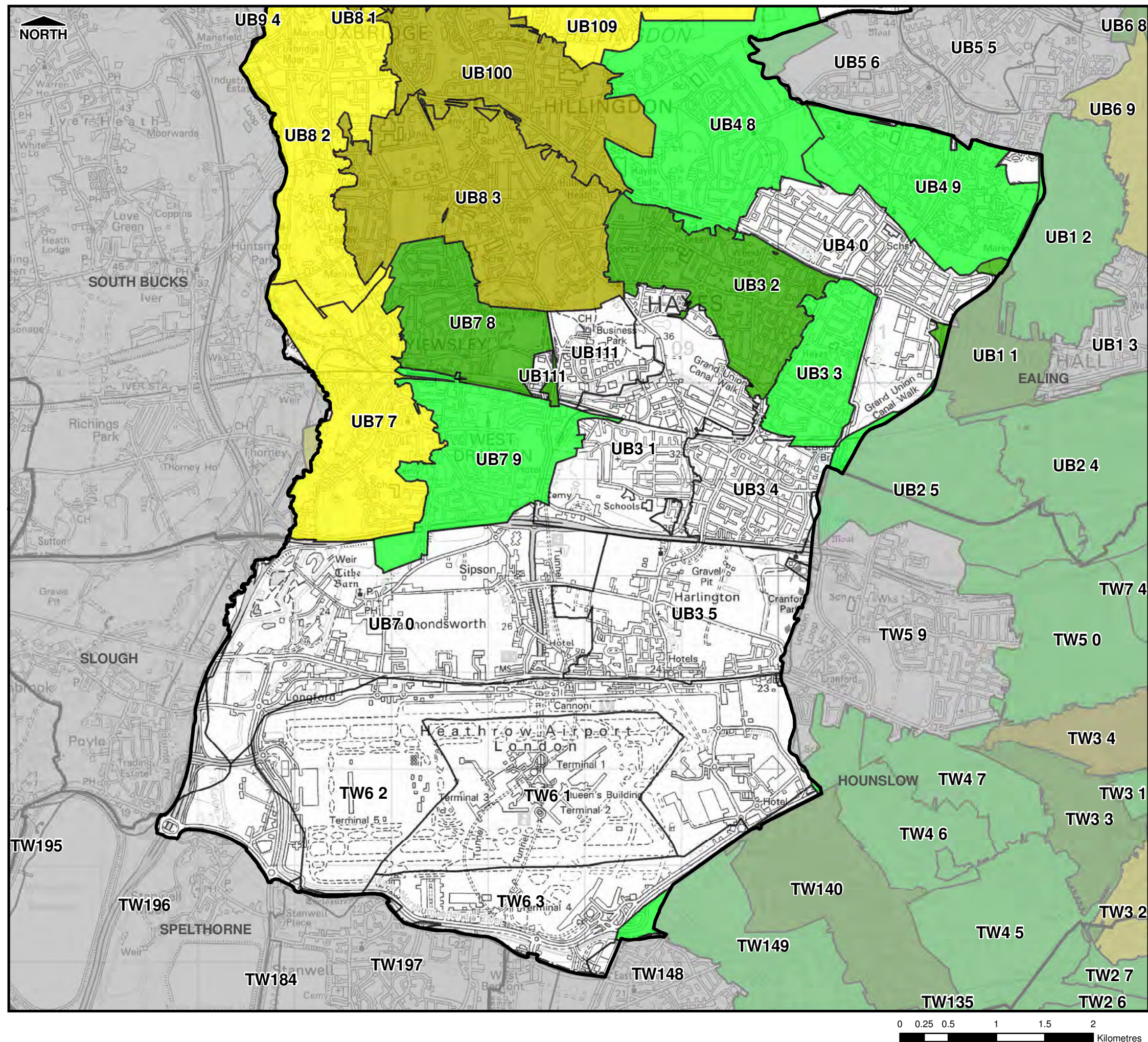


Filepath: L:\Environment\zwet\CS046913\_DrainLondon\_Tier2\Group1\ARC\mxd\PFRA\GP1\_Hillingdon\_FigA-4.2\_SewerIncidents.mxd



THIS DRAWING MAY BE USED ONLY FOR THE PURPOSE INTENDED

**Legend**

- Borough Administrative Boundary
- Sewer Flooding Incidents
- Sewer Flood Outline
- No. of Sewer Flood Records
  - None
  - 1 - 5
  - 6 - 10
  - 11 - 20
  - 21 - 50
  - 51 - 100
  - 101+

**Notes**

1. Sewer flood records relate to internal and external flooding of properties
2. Data supplied by Thames Water Ltd and is correct as at June 2010

**London Borough of Hillingdon**



**Preliminary Flood Risk Assessment**

© Crown Copyright. All rights reserved. GLA (LA100032379) 2011  
Covers all data that has been supplied and distributed under license for the Drain London project.  
Digital geological data reproduced from British Geological Survey  
(c) NERC Licence No 2011/053A

Scale at A3	Date	Drawn by	Approved by
1:40,000	06/04/2011	R.MOORE	P.HLINOVSKY

**Summary Map of Past Floods - Sewer Incidents**

Consultants

Capita Symonds  
Level Seven,  
52 Grosvenor Gardens,  
Belgravia,  
London  
SW1W 0AU

Drain London Programme Board Members

GREATER LONDON AUTHORITY

**FIGURE A-4.2**



## APPENDIX C – SURFACE & FOUL WATER MANAGEMENT DRAWINGS AND CALCULATIONS

Drawing No.	Title
C151867/C/101	Proposed Drainage Catchment Areas
C151867/C/102	Proposed Surface Water Attenuation Locations
C151867/C/001	Proposed Drainage Strategy – Sheet 1
C151867/C/002	Proposed Drainage Strategy – Sheet 2
-	Canal & River Trust – Nestlé Drive, Hayes – Stage Three Assessment Pro-Forma
-	MicroDrainage – ICP SUDS 'Greenfield Run-off Rate Calculations
-	MicroDrainage – Network Model Calculations



- NOTES:
1. THIS DRAWING IS TO BE READ IN CONJUNCTION WITH C151867/C/001, C151867/C/002 AND C151867/C/102.



TOTAL IMPERMEABLE AREA DRAINING TO CANAL 2.38ha  
TOTAL IMPERMEABLE AREA DRAINING TO THAMES WATER 2.46ha

- PERMEABLE PAVING
- PODIUM
- IMPERMEABLE CATCHMENT AREAS (ROOF AND PAVING)

P6	21.04.17	UPDATED SITE PLAN	AB	JH
P5	27.01.17	P12 AND P14 AMENDED	AB	JH
P4	25.01.17	LEGEND AND HATCHING AMENDED	AB	JH
P3	22.12.16	PRELIMINARY- CATCHMENTS AREAS AMENDED	AB	JH
P2	19.12.16	PRELIMINARY- CATCHMENTS AREAS AMENDED	AB	JH
P1	25.10.16	PRELIMINARY ISSUE	AB	JH
Rev	Date	Description	By	Ckd

Architect :  
**MAKOWER ARCHITECTS**

**Hydrock**  
Hydrock Consultants Ltd  
20 Hyde Valley Innovation Centre  
Central Boulevard  
Salford  
M6 6PU  
T +44 (0)121 5069040  
www.hydrock.com

Client :  
**BARRATT — LONDON —**

Project Title:  
**FORMER NESTLÉ SITE  
HAYES**

Drawing Title:  
**PROPOSED DRAINAGE  
CATCHMENT AREAS**

Drawing Status:  
**PRELIMINARY ISSUE**

Hydrock Job No: **C151867**

Drawn AB	Checked JH	Scale @ A1 1:1000	Date 27.01.16	Issue Date 27.01.16
Drawing Number: <b>C151867/C/101</b>				Revision: <b>P6</b>