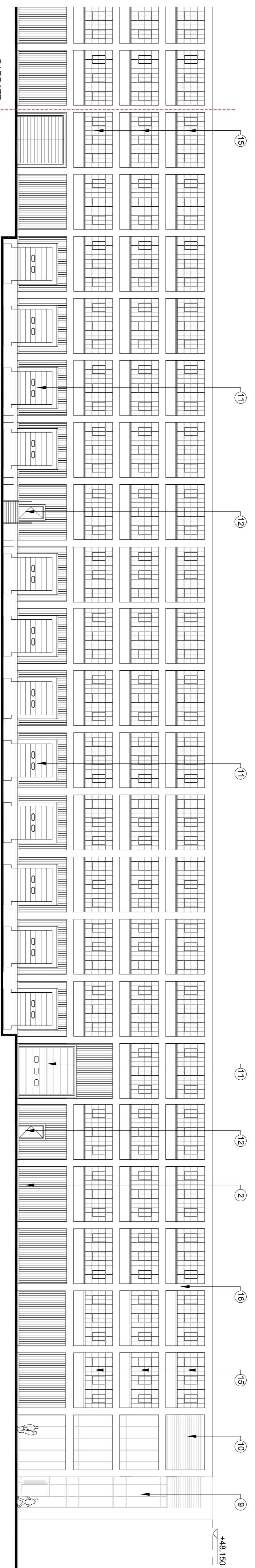
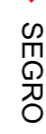


WEST ELEVATION

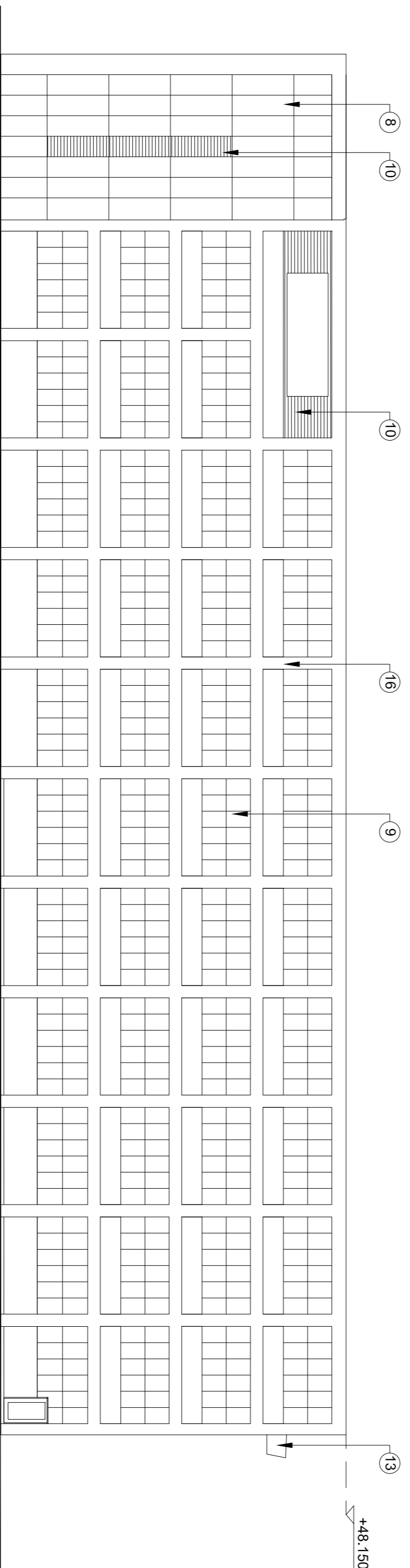


EAST ELEVATION

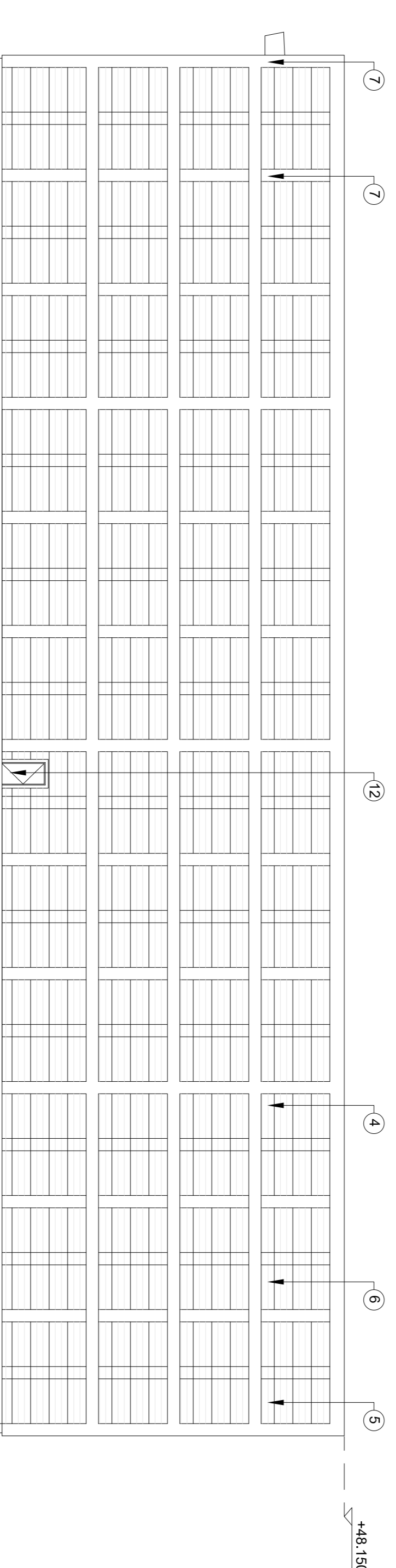
BARRATT  
LONDON



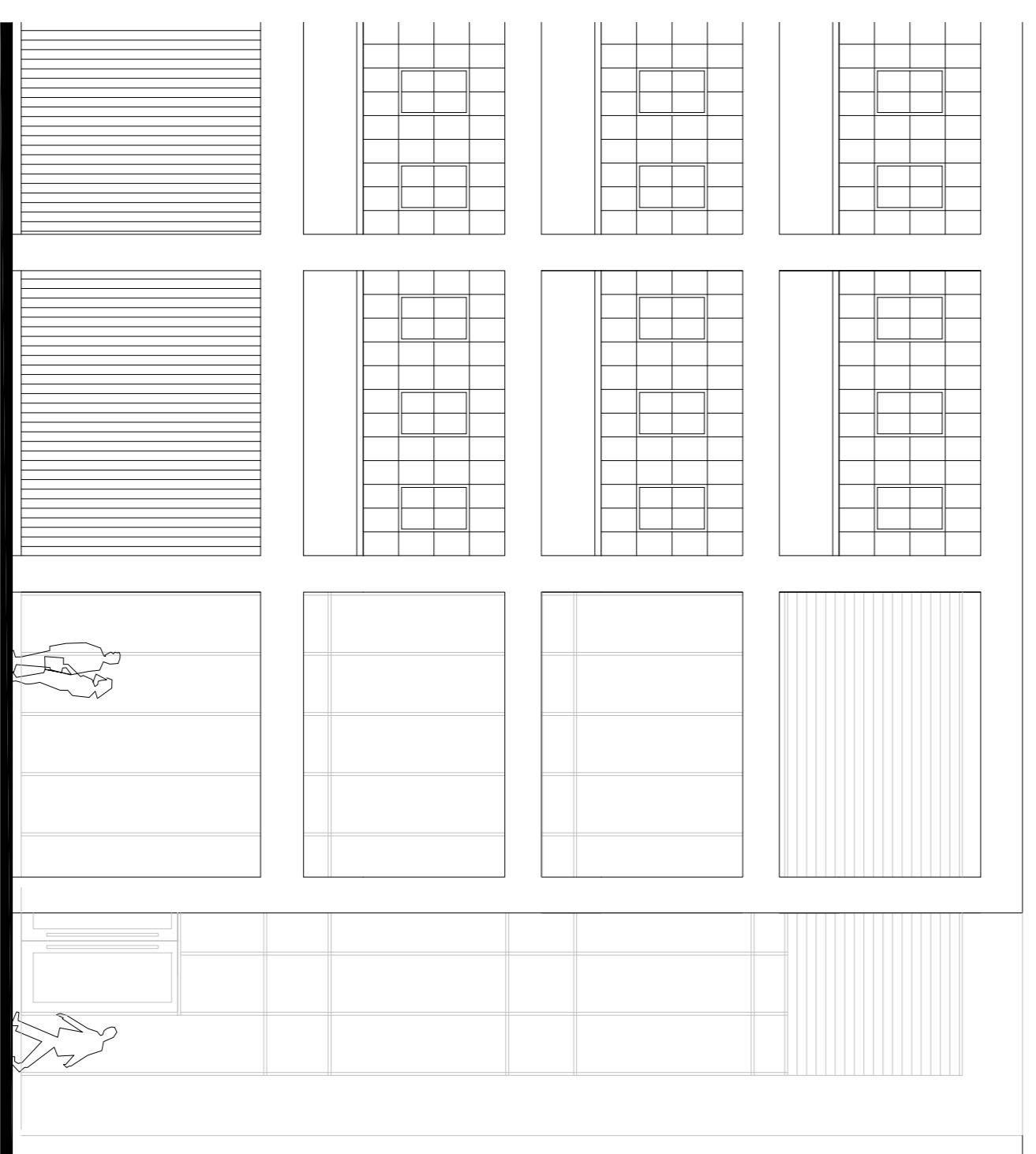
SEGRO



NORTH ELEVATION



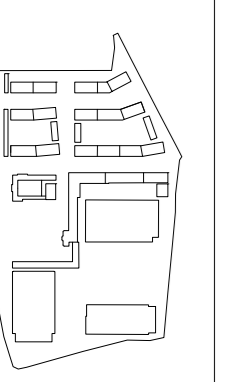
SOUTH ELEVATION



DETAIL EAST ELEVATION

SCHEDULE OF FACING MATERIALS

1	Profiled Wall Cladding 1	Vertically laid trapezoidal profiled steel cladding Finish: Colourcoat Prima; Zeus
2	Profiled Wall Cladding 2	Vertically laid trapezoidal profiled steel cladding Finish: Colourcoat Prima; Silver Metallic RAL 8006
3	Flat Panel Wall Cladding 1	Flat metal faced composite cladding panels Finish: Colourcoat Prima; Silver metallic RAL 8006
4	Flat Panel Wall Cladding 2	Rubberom cladding panels Finish: Colourcoat Prima Colour: Silver Metallic RAL 8006 (Light Grey)
5	Flat Panel Wall Cladding 3	Rubberom cladding panels Finish: Colourcoat Prima Colour: Silver (Mid Grey)
6	Flat Panel Wall Cladding 4	Rubberom cladding panels Finish: Colourcoat Prima Colour: Other (Darker Grey)
7	White Feature Band	Vertical & horizontal feature band Colour: Colourcoat Prima; White RAL 9010
8	Dark Grey Flat Panel	Flat metal faced composite cladding panels Colour: Colourcoat Prima; Zeus
9	Curtain Walling / Windows	Clear Anti-Sun double glazing in polymer powder coated aluminium curtain walling system, Colour: Silver Grey RAL 7012
10	Louvers	Metal Louvre to match cladding, Silver Metallic RAL 8006 / Zeus
11	Loading Doors	Aluminium faced composite sectional doors Finish: Matching adjacent cladding (Silver Metallic)
12	Personnel Doors	Steel doors and frames Finish: Colourcoat Prima; Matching adjacent cladding or Silver Metallic (RAL 8006)
13	Eaves/wedge flashing	Powder coated aluminium eaves/wedge flashing and soffit Colour: Grey Aluminium RAL 8007
14	Roof	1000 x 20R profiled steel roof decking with GFR rooflights SL-48 Reversible Aluminium frame system, Colour: Slate Grey RAL 7012
15	Standard Panels	Smooth concrete render Colour: White RAL 9010
16	Render	



DATE	REV	DESCRIPTION	CHK

MICHAEL SPARKS ASSOCIATES  
11 Paul Place, St Dennis Road  
London SW9 4TU  
Tel: 020 7582 2222  
info@sparks.co.uk