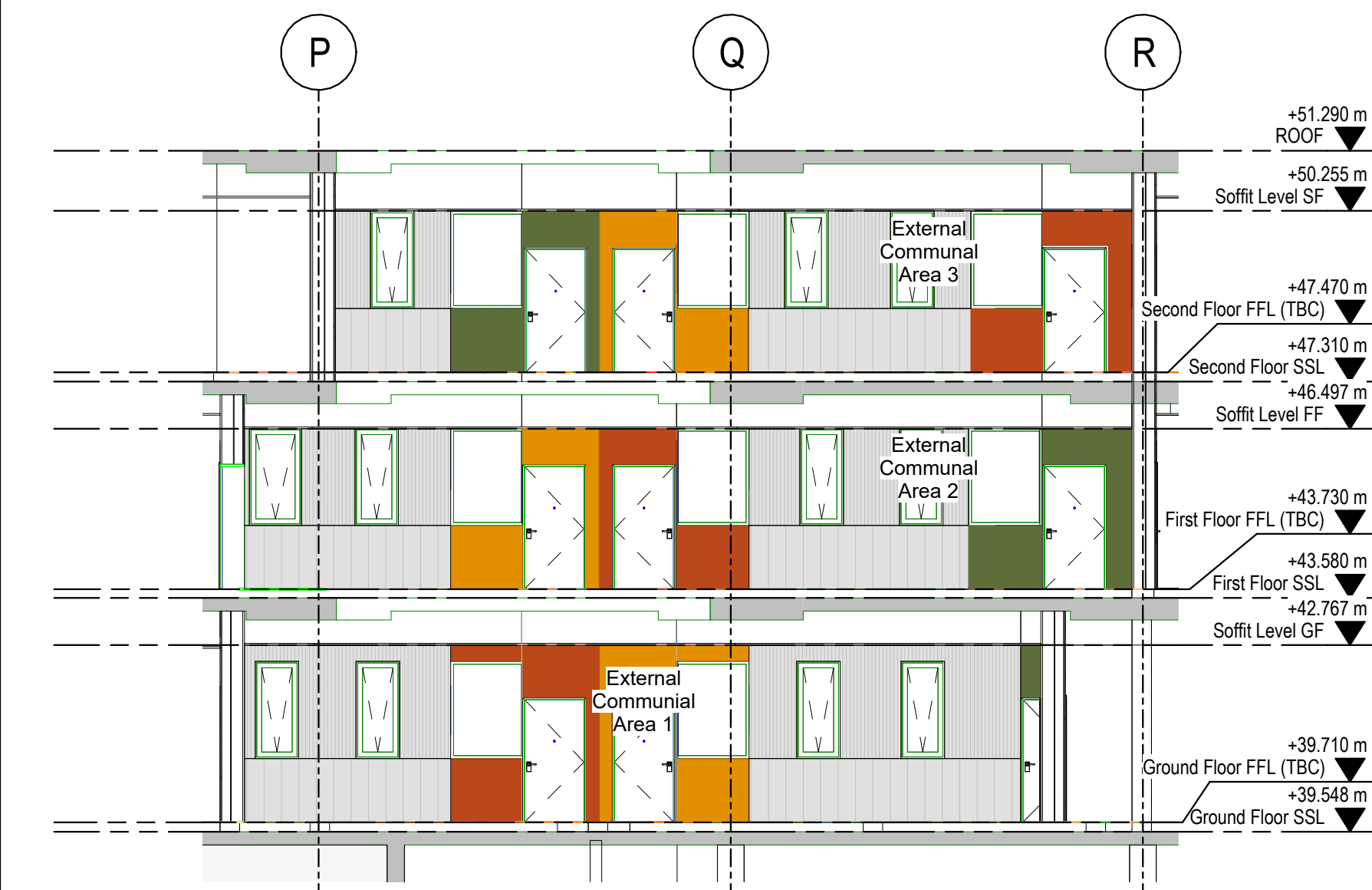




Courtyard 1 (CY1) Cladding Materials

1 : 100



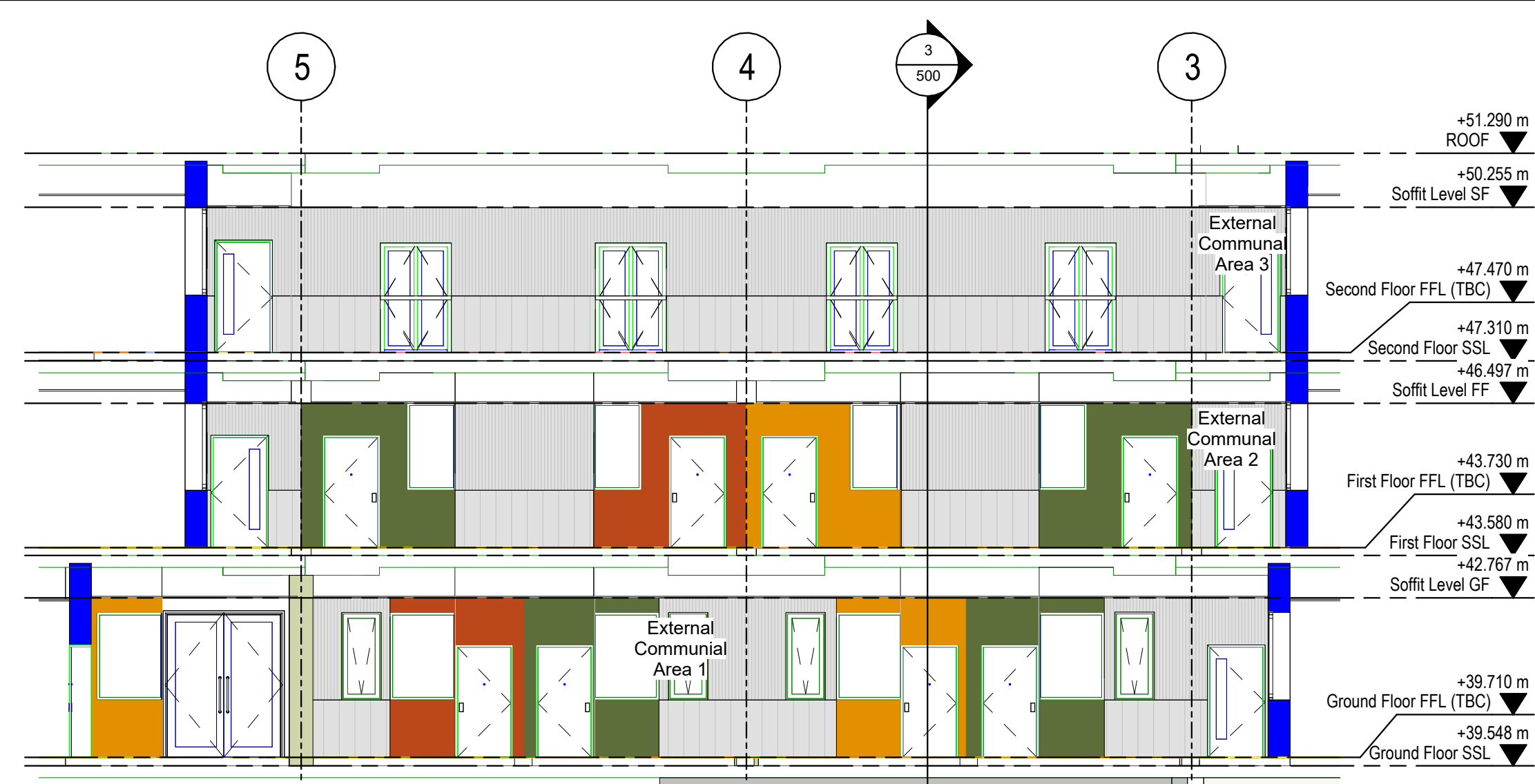
Courtyard 3 (CY3) Cladding Materials

1 : 100



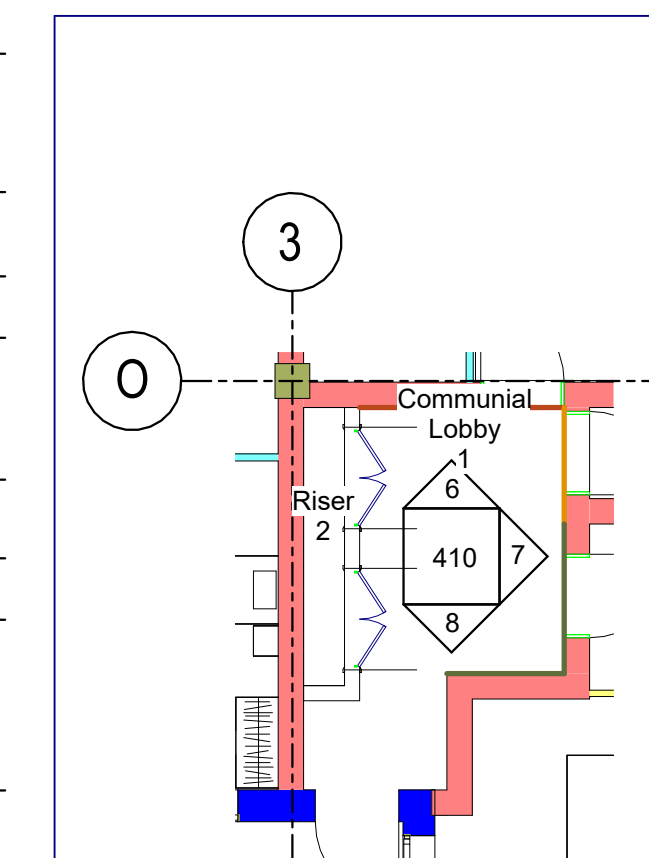
Courtyard 4 (CY4) Cladding Materials

1 : 100



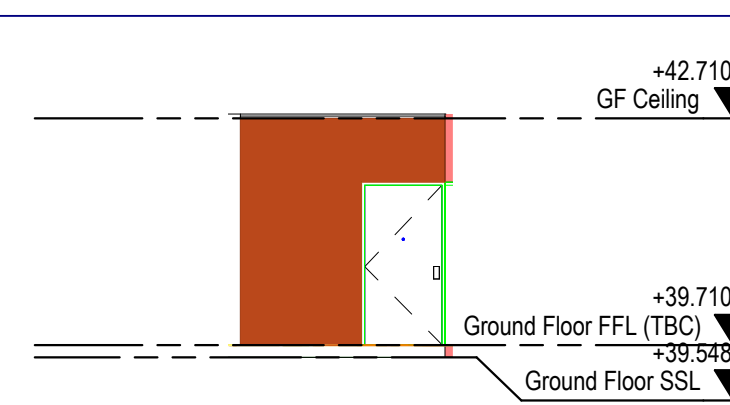
Courtyard 2 (CY2) Cladding Materials

1 : 100



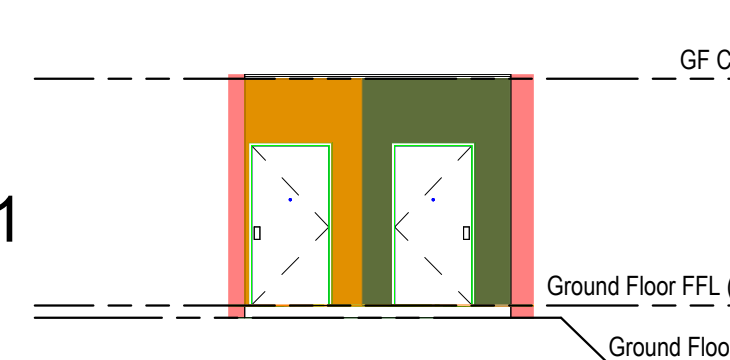
GL Communal Lobby 1 Materials - Callout 1

1 : 100



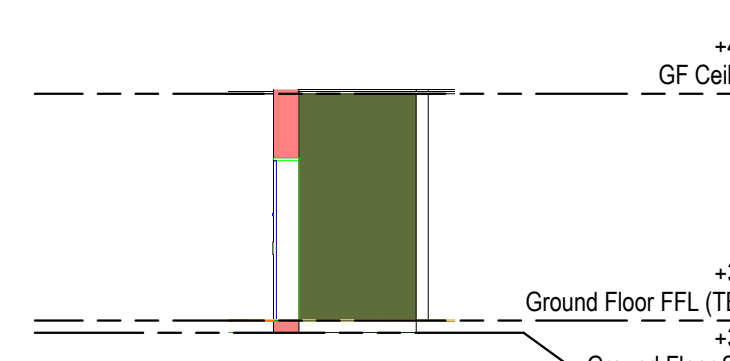
Communal Lobby 1 Elevation North Cladding Materials

1 : 100



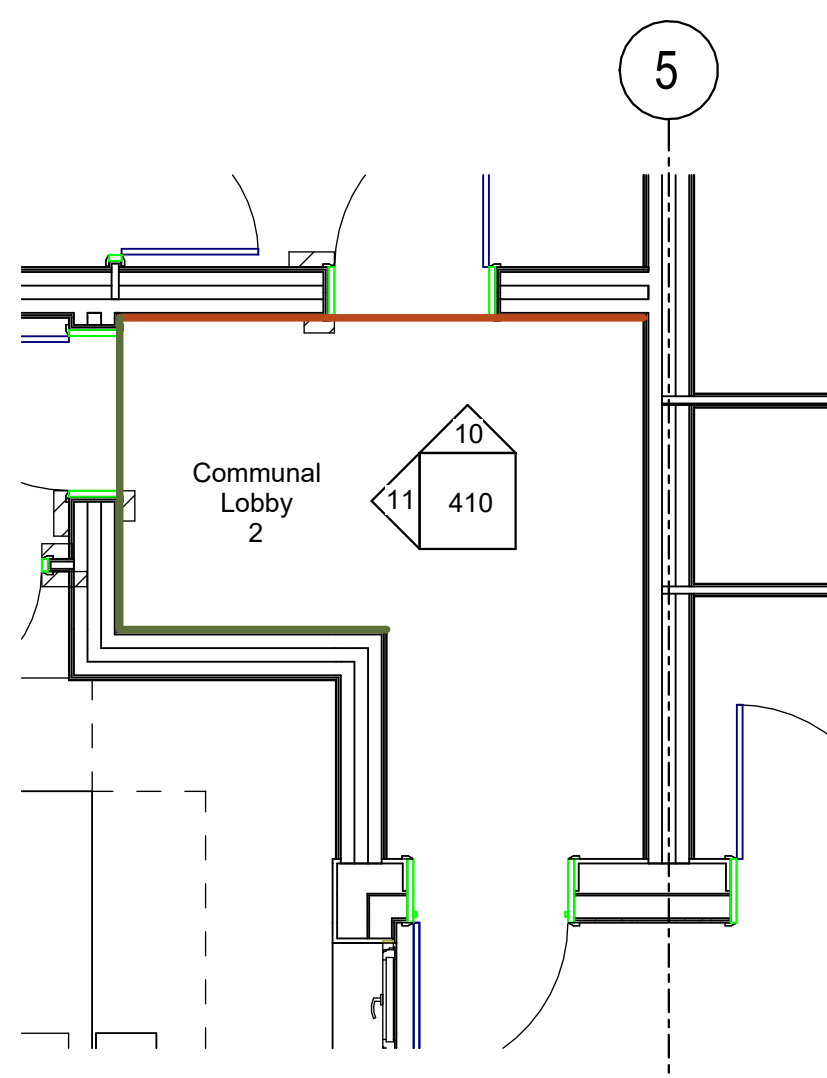
Communal Lobby 1 Elevation East Cladding Materials

1 : 100



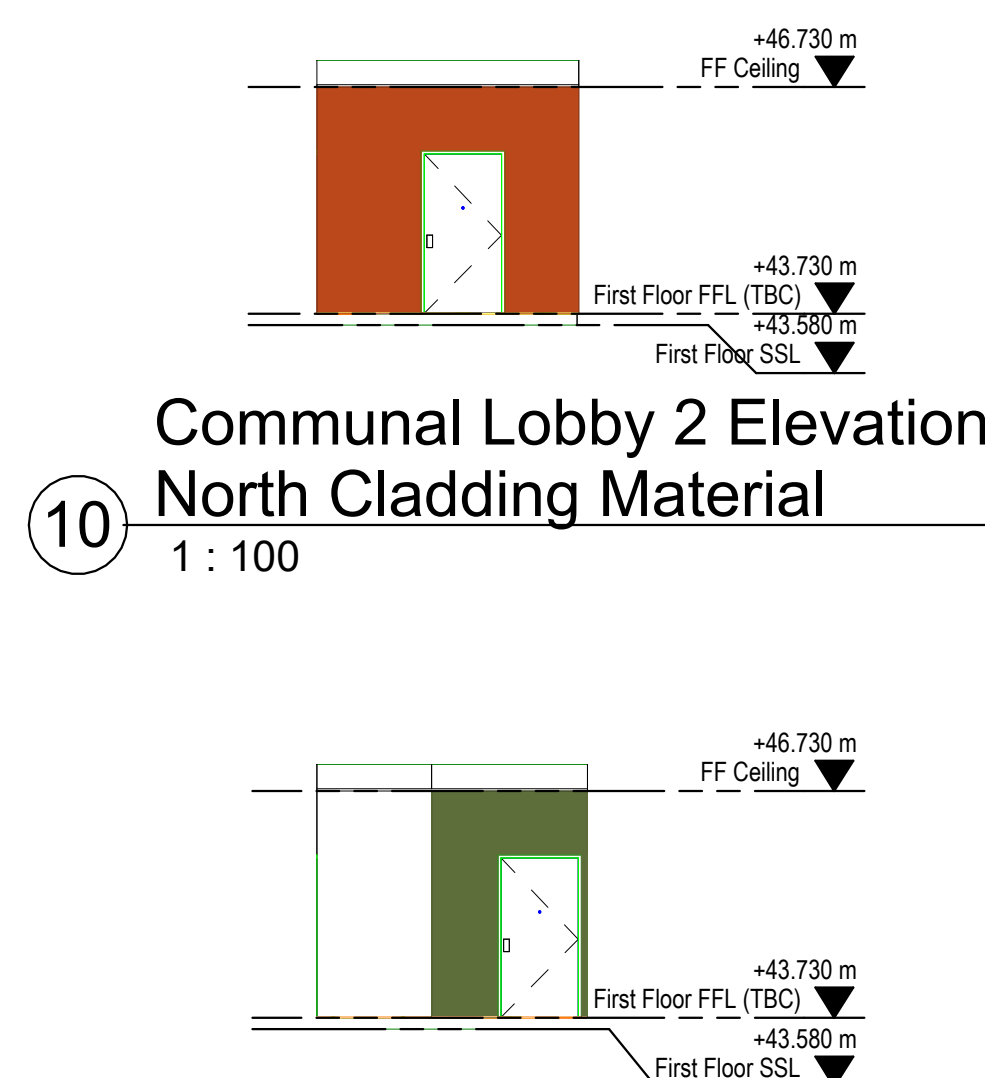
Communal Lobby 1 Elevation South Cladding Materials

1 : 100



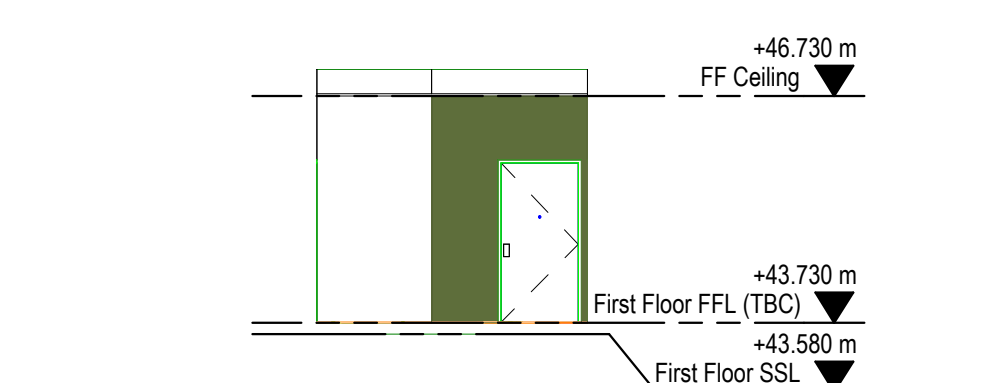
FL Communal Lobby 2 Materials - Callout 1

1 : 50



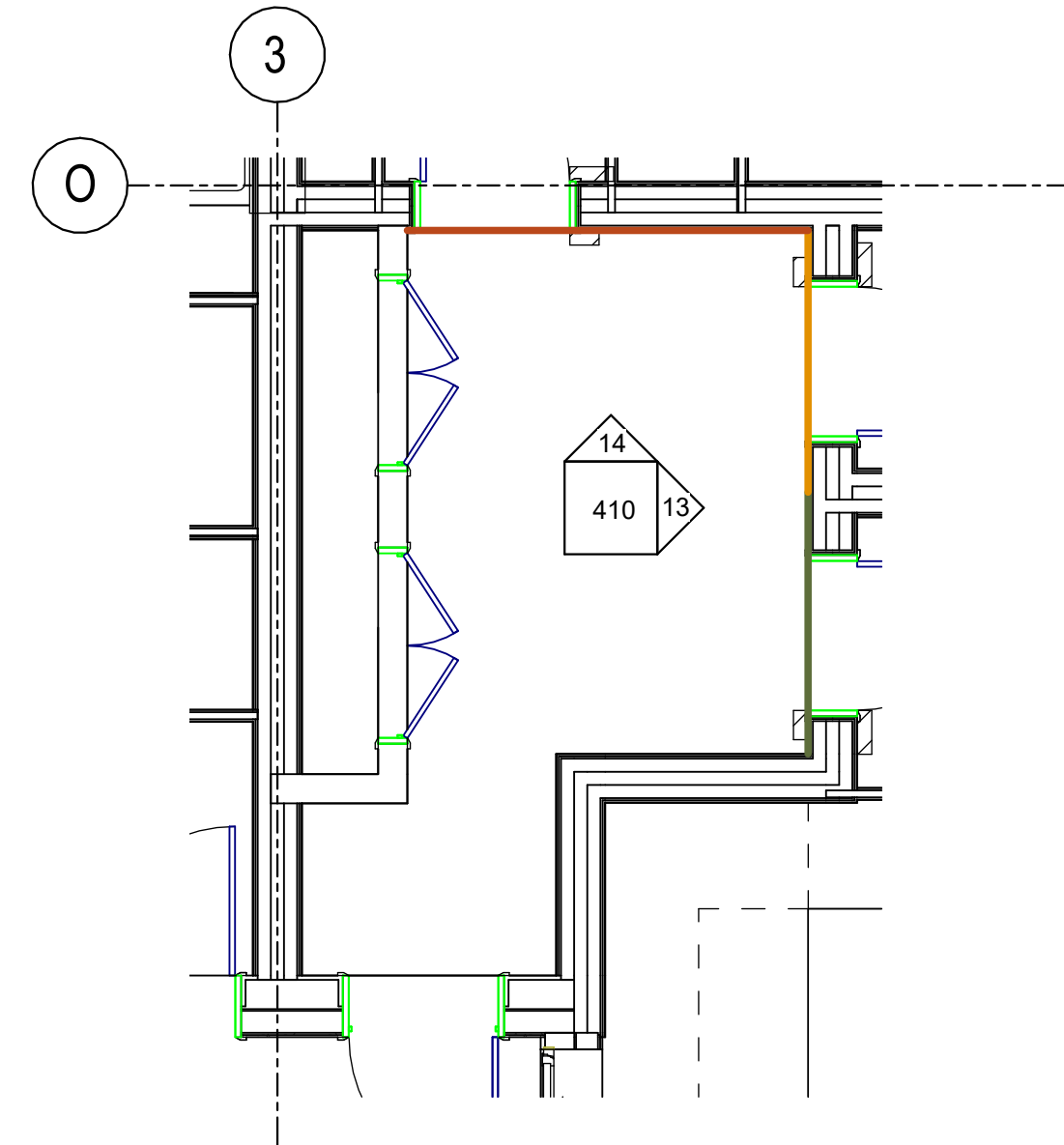
Communal Lobby 2 Elevation North Cladding Material

1 : 100



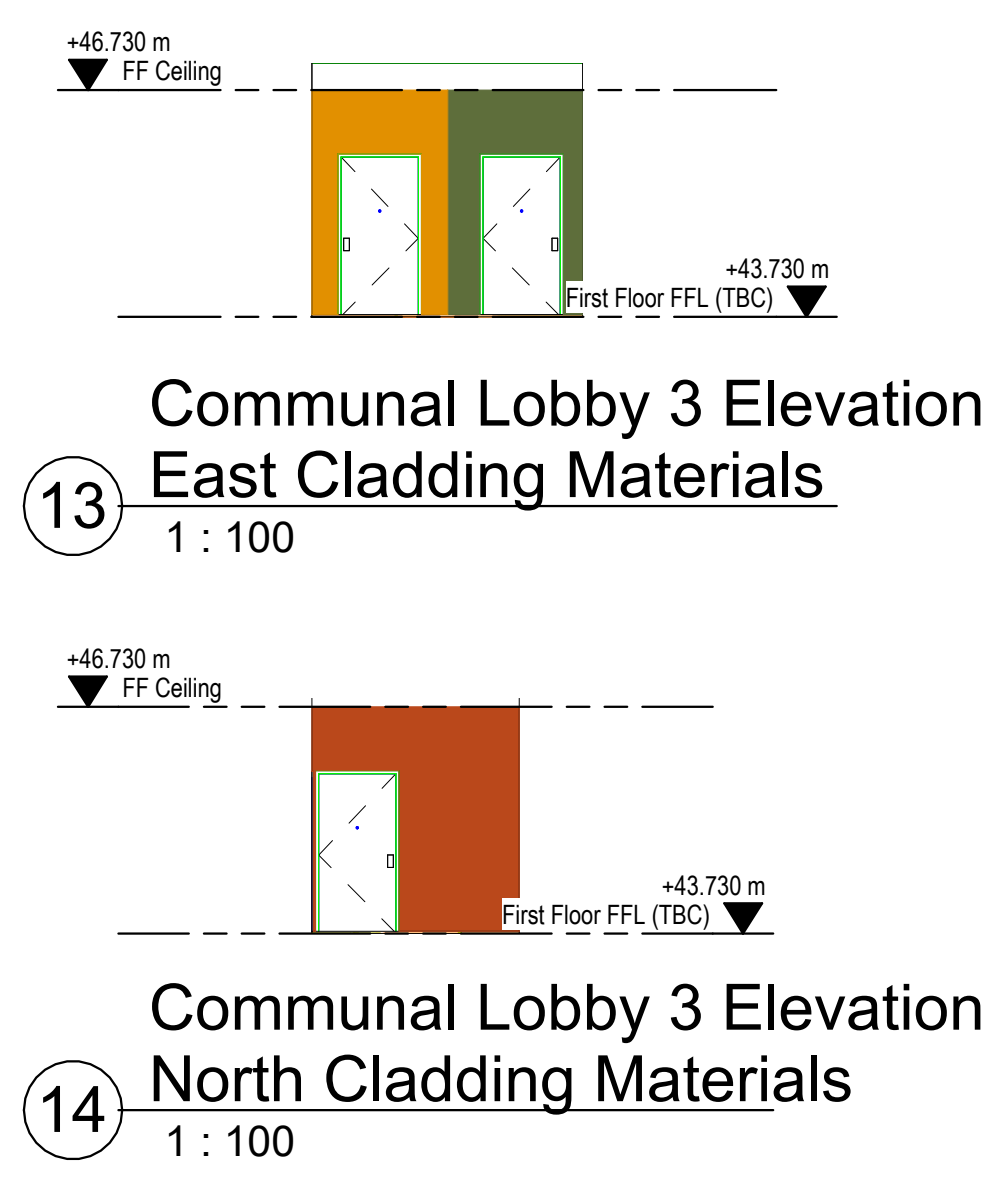
Communal Lobby 2 Elevation West Cladding Materials

1 : 100



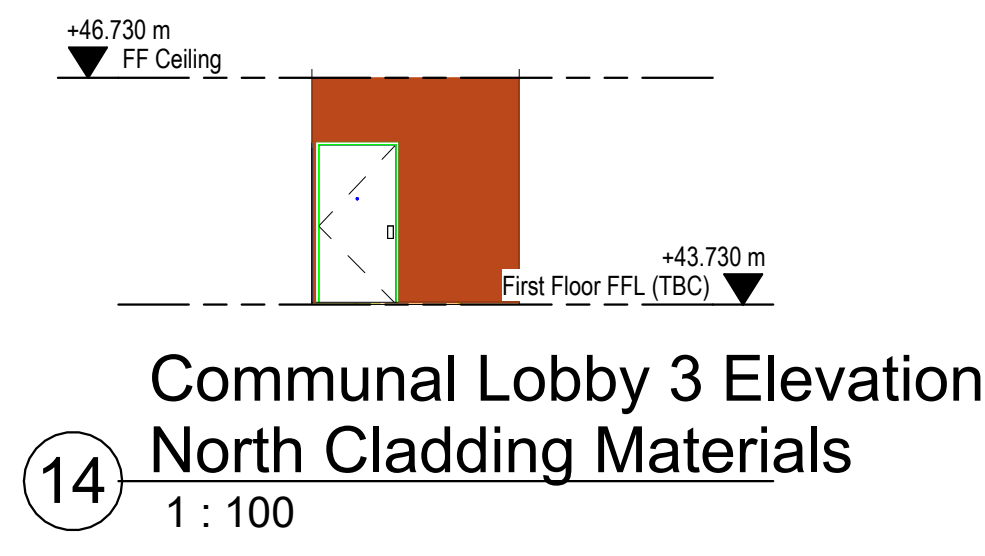
FL Communal Lobby 3 Materials - Callout 2

1 : 50



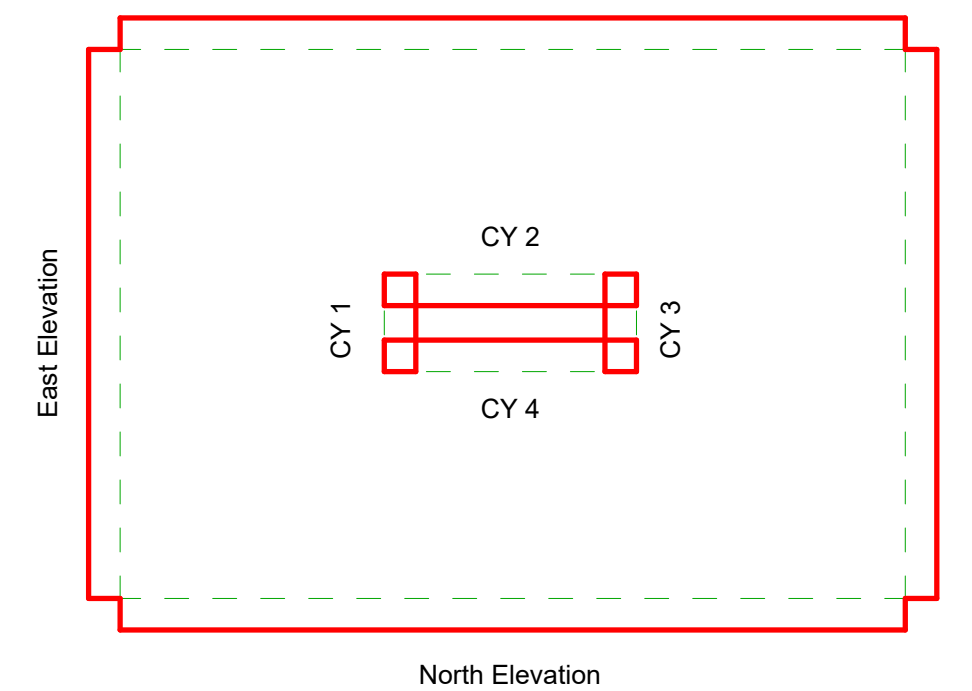
Communal Lobby 3 Elevation East Cladding Materials

1 : 100



Communal Lobby 3 Elevation North Cladding Materials

1 : 100

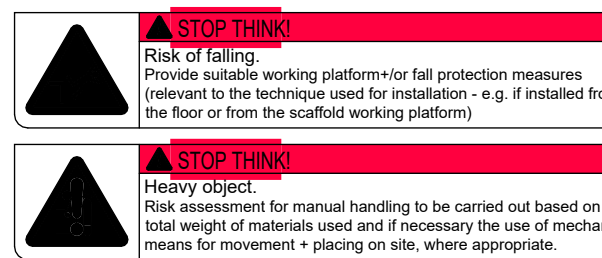


Elevation Key

1 : 500

Notes:
do not scale:
detailed drawings and larger scale drawings take precedence. Figured dimensions only are to be taken from this drawing.
dimensions:
All buildings and site dimensions, levels and sewer invert levels at connection points are to be checked and verified on site by the contractor before the commencement of works. All dimensions are to be checked prior to the placement of orders for materials or the fabrication of work and any discrepancy, omission or error is to be reported to the architect immediately for verification.
specification:
The contractor is to comply with current building legislation, British standard specifications, building regulations etc. whether or not specifically stated on this drawing. This drawing is to be checked and read in conjunction with any structural or other relevant specialist and design documentation provided.

NOTE:
All drawings are subject to local authority approval, structural engineers details, energy specialist's criteria, framing manufacturer's, fenestration, cladding and other key specialists' details. Any tolerances and differential movement between elements is to be accommodated within the design
NOTE:
Final materials are to be fully in accordance with local authority approved materials schedule & colours.



A Materials Location Set 06/06/25 LA Issue

Rev Description Date By

Client: Marson Properties

Project: Hayes Park Central, Hayes End Road, Hayes

Description: Proposed Courtyard Elevations Materials

jdw
architects Ltd

head office:
the old stone masons, 10 d johns st,
abergavenny, marmouthshire, np23 5rt
tel: 01873 851 125 fax: 01873 851 127

newport:
first floor, 5 gold tops,
newport, south wales, np20 4pg
tel: 01633 245020

Email: info@jdwarchitects.co.uk
www.jdwarchitects.co.uk

Drawn: Author Scale: As indicated

Date: 03/28/25

Drawing No: JW 1200.1410

Rev: A